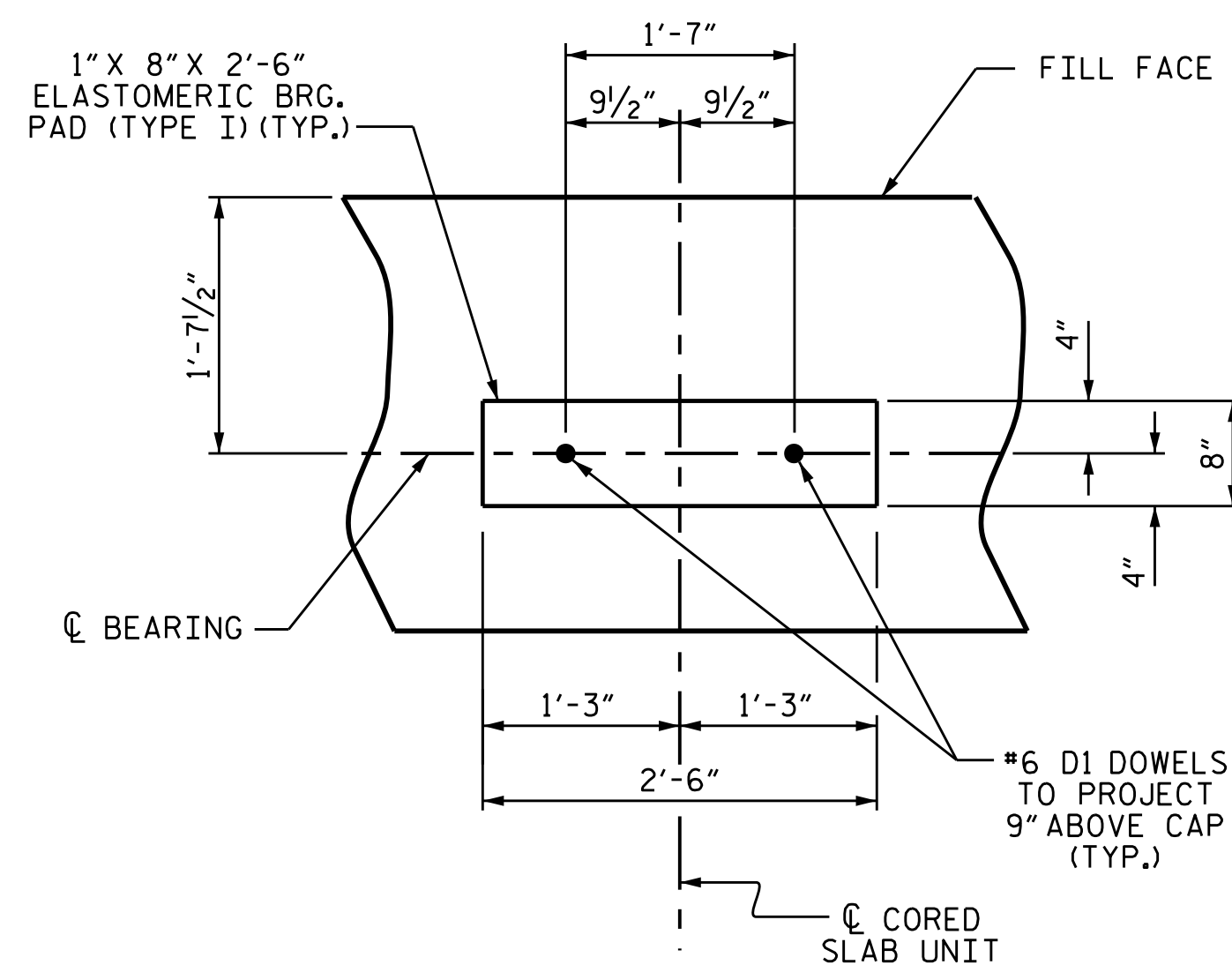


BAGGED STONE AND PIPE SHALL BE PLACED IMMEDIATELY AFTER COMPLETION OF END BENT EXCAVATION. PIPE MAY BE EITHER CONCRETE, CORRUGATED STEEL, CORRUGATED ALUMINUM ALLOY, OR CORRUGATED PLASTIC. PERFORATED PIPE WILL NOT BE ALLOWED.

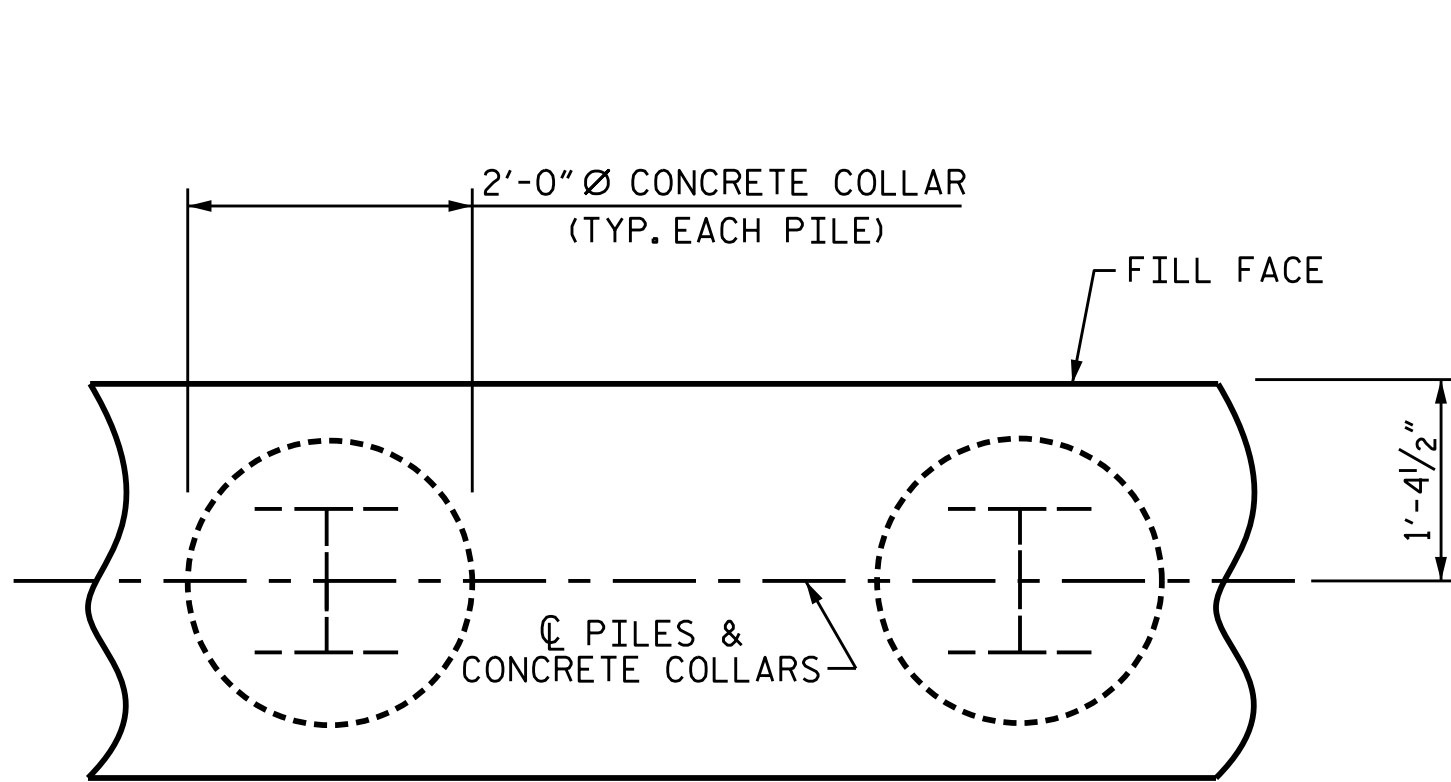
BAGGED STONE SHALL REMAIN IN PLACE UNTIL THE ENGINEER DIRECTS THAT IT BE REMOVED. THE CONTRACTOR SHALL REMOVE AND DISPOSE OF SILT ACCUMULATIONS AT BAGGED STONE WHEN SO DIRECTED BY THE ENGINEER. BAGS SHALL BE REMOVED AND REPLACED WHENEVER THE ENGINEER DETERMINES THAT THEY HAVE DETERIORATED AND LOST THEIR EFFECTIVENESS.

NO SEPARATE PAYMENT WILL BE MADE FOR THIS WORK AND THE ENTIRE COST OF THIS WORK SHALL BE INCLUDED IN THE UNIT CONTRACT PRICE BID FOR THE SEVERAL PAY ITEMS.

TEMPORARY DRAINAGE AT END BENT

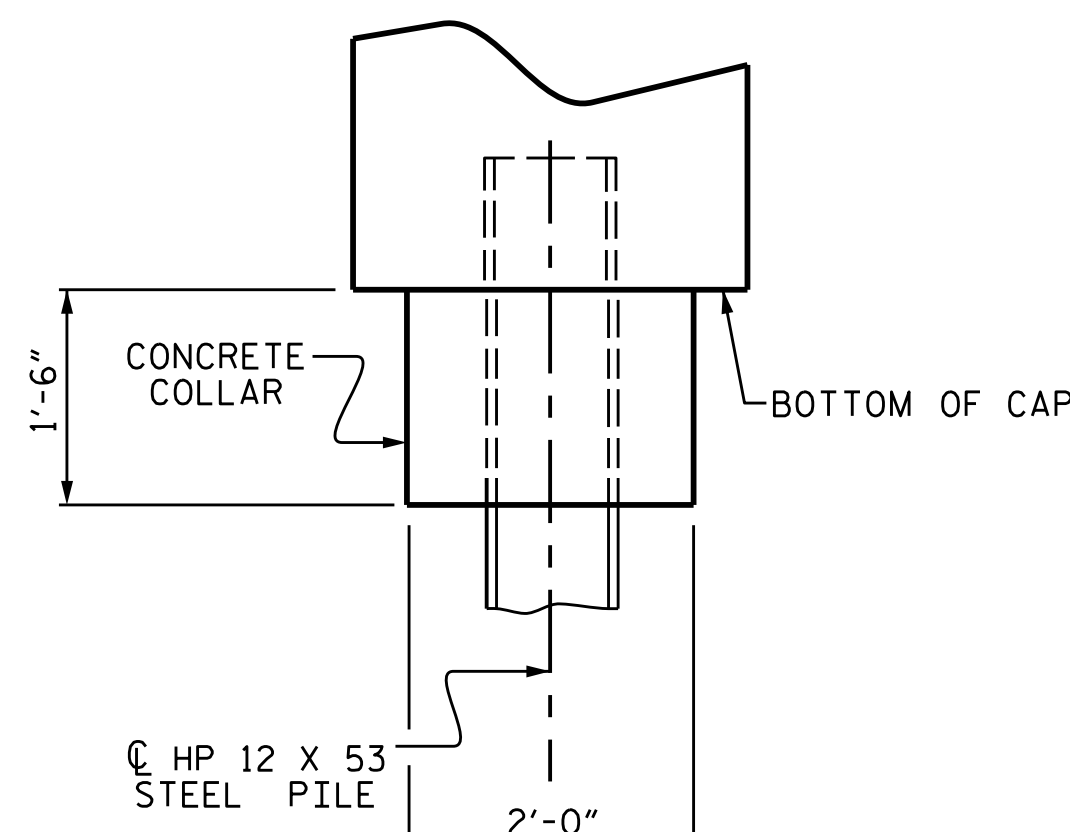


DETAIL "A"

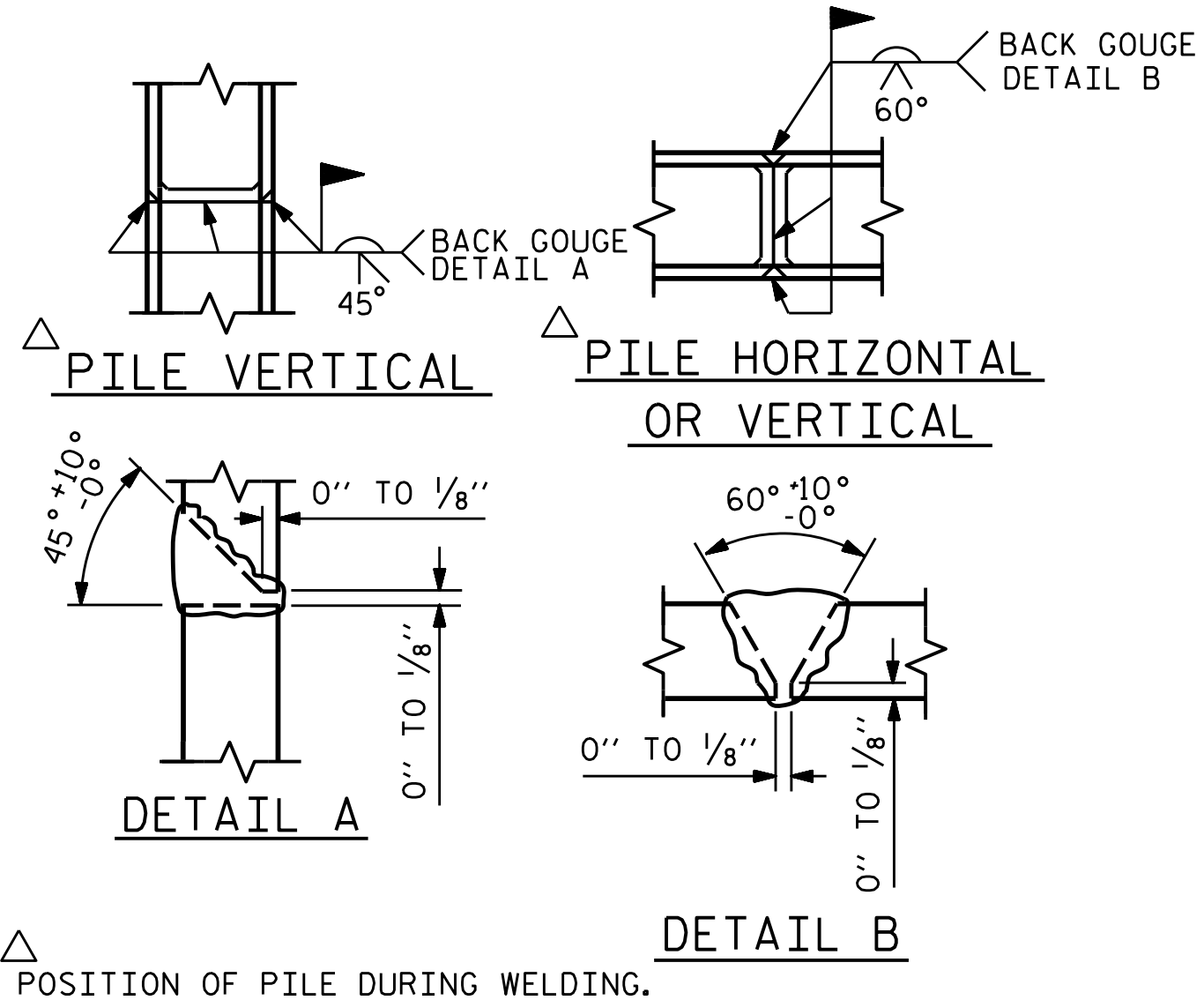


PLAN

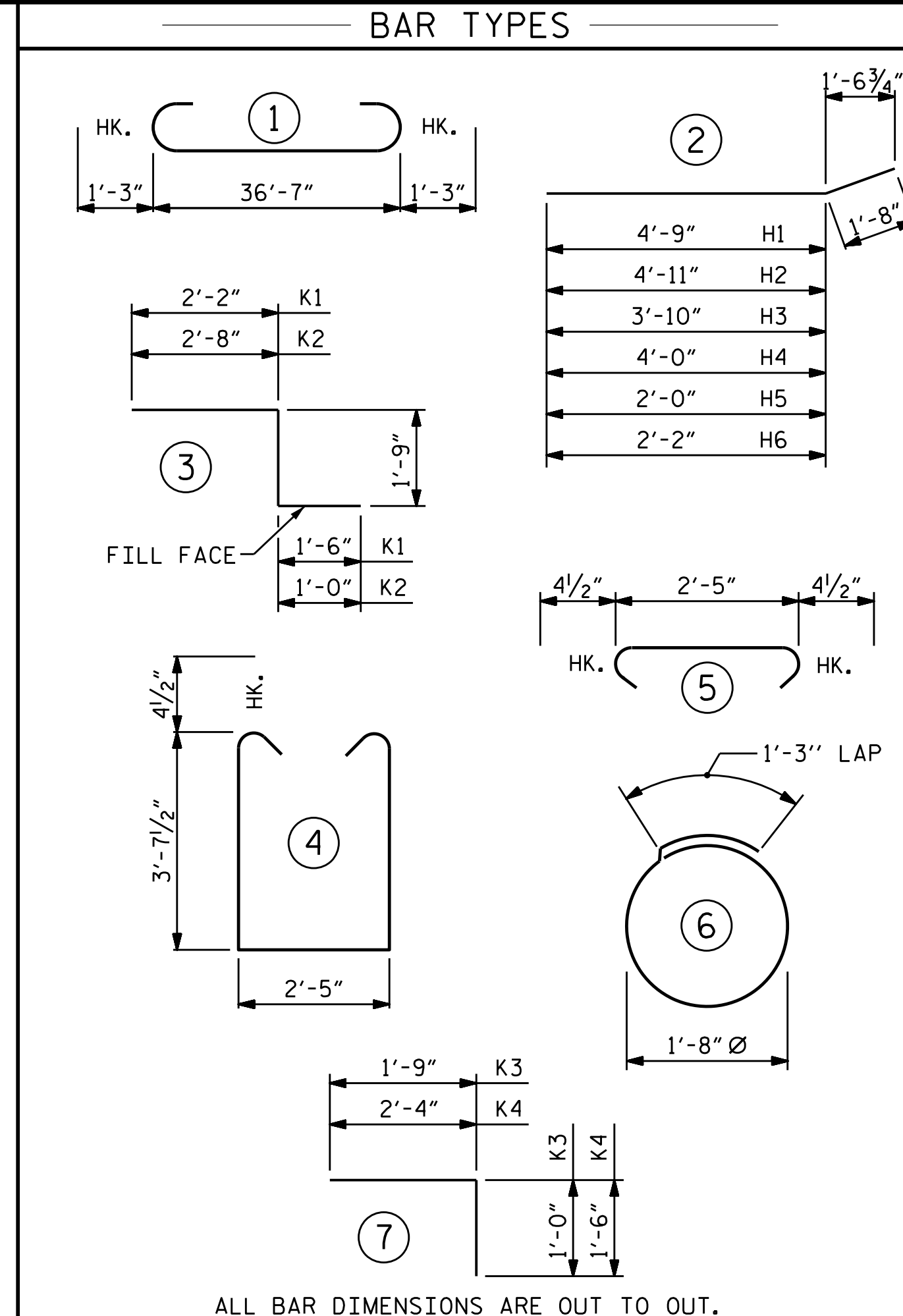
CORROSION PROTECTION FOR STEEL PILES DETAIL



ELEVATION

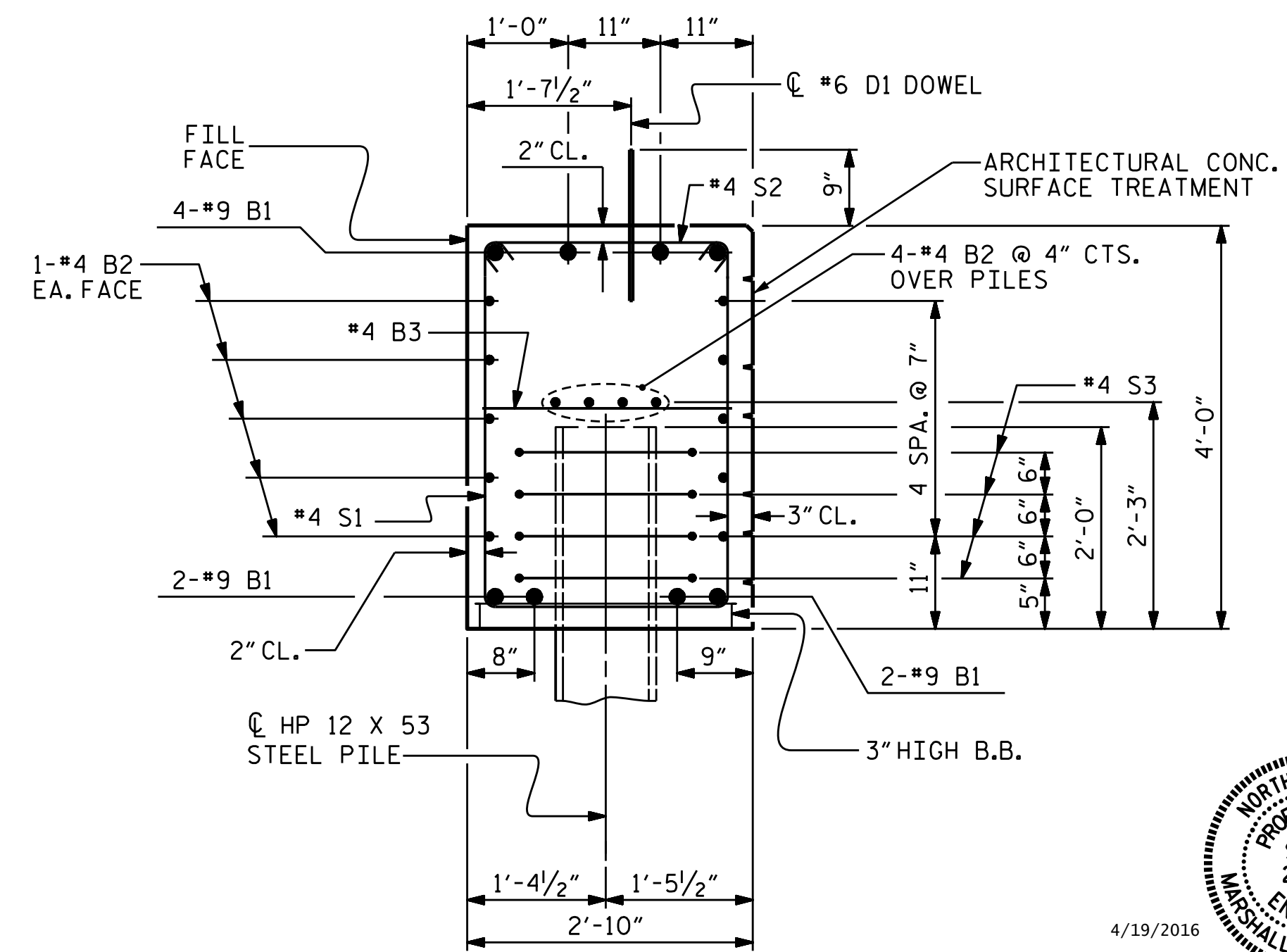


PILE SPLICE DETAILS



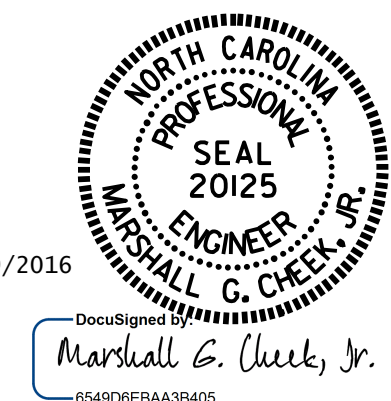
BILL OF MATERIAL					
END BENT No. 2					
BAR	NO.	SIZE	TYPE	LENGTH	WEIGHT
B1	8	#9		39'-1"	1063
B2	28	#4	STR	19'-7"	366
B3	10	#4	STR	2'-5"	16
D1	22	#6	STR	1'-6"	50
H1	6	#4	2	6'-5"	26
H2	6	#4	2	6'-7"	26
H3	1	#4	2	5'-6"	4
H4	1	#4	2	5'-8"	4
H5	1	#4	2	3'-8"	2
H6	1	#4	2	3'-10"	3
H7	2	#4	STR	5'-6"	7
K1	3	#4	3	5'-5"	11
K2	3	#4	3	5'-5"	11
K3	3	#4	7	2'-9"	6
K4	3	#4	7	3'-10"	8
S1	50	#4	4	10'-5"	348
S2	50	#4	5	3'-2"	106
S3	28	#4	6	6'-6"	122
V1	24	#4	STR	6'-2"	99
V2	2	#4	STR	6'-0"	8
V3	2	#4	STR	5'-8"	8
V4	2	#4	STR	5'-2"	7
V5	2	#4	STR	4'-8"	6
V6	2	#4	STR	4'-2"	6
V7	2	#4	STR	3'-8"	5

REINFORCING STEEL	2318 LBS.
CLASS A CONCRETE BREAKDOWN	
POUR #1 CAP, LOWER PART OF WINGS & COLLARS	17.7 C.Y.
POUR #2 UPPER PART OF WINGS	1.2 C.Y.
TOTAL CLASS A CONCRETE	18.9 C.Y.
HP 12 X 53 STEEL PILES	
NO: 7	LIN. FT. = 105
PILE EXCAVATION	
PILE EXCAVATION IN SOIL	40 LIN. FT.
PILE EXCAVATION NOT IN SOIL	35 LIN. FT.
ARCHITECTURAL CONC. SURFACE TREATMENT	195 SQ. FT.



SECTION A-A

(CONCRETE COLLAR NOT SHOWN FOR CLARITY. SEE "CORROSION PROTECTION FOR STEEL PILES DETAIL.")



PROJECT NO. B-5118

WATAUGA COUNTY

STATION: 11+91.00 -L-

SHEET 3 OF 4

STATE OF NORTH CAROLINA

DEPARTMENT OF TRANSPORTATION

RALEIGH

SUBSTRUCTURE

END BENT No. 2

DETAILS

DRAWN BY :	W.J. HARRIS	DATE :	2/16
CHECKED BY :	B.N. GRADY	DATE :	2/16
DESIGN ENGINEER OF RECORD :	W.J. HARRIS	DATE :	4/16

DOCUMENT NOT CONSIDERED FINAL UNLESS ALL SIGNATURES COMPLETED

REVISIONS						SHEET NO.
NO.	BY:	DATE:	NO.	BY:	DATE:	S-17
1			3			TOTAL SHEETS
2			4			20