

UTILITIES BY OTHERS

NOTE:
ALL PROPOSED UTILITY WORK SHOWN ON THIS SHEET WILL BE DONE BY OTHERS

NOTE:
A VISIBLE SLEEVE WILL BE ADDED TO THE EXISTING AND TEMPORARY POWER LINES DURING CONSTRUCTION

NOTE:
PRIVATE UTILITIES WILL BE RELOCATED BY PROPERTY OWNER (HE CLUB, INC) PRIOR TO CONSTRUCTION

CONTACT:
HE CLUB, INC.
DON VANCE
CHIEF OPERATING OFFICER/GENERAL MANAGER
(828) 963-7535

PROP. 6" DIP WATER LINE IN 16" STEEL ENCASEMENT

NOTE:
RISER POLE WILL REMAIN ACTIVE AT ALL TIMES

PROP. 6" DIP WATER LINE

PROP. TEL PED

HE CLUB PRIVATE UTILITY

ABANDON EXIST. 6" WATER LINE

31' BETWEEN POLE AND STRUCTURE

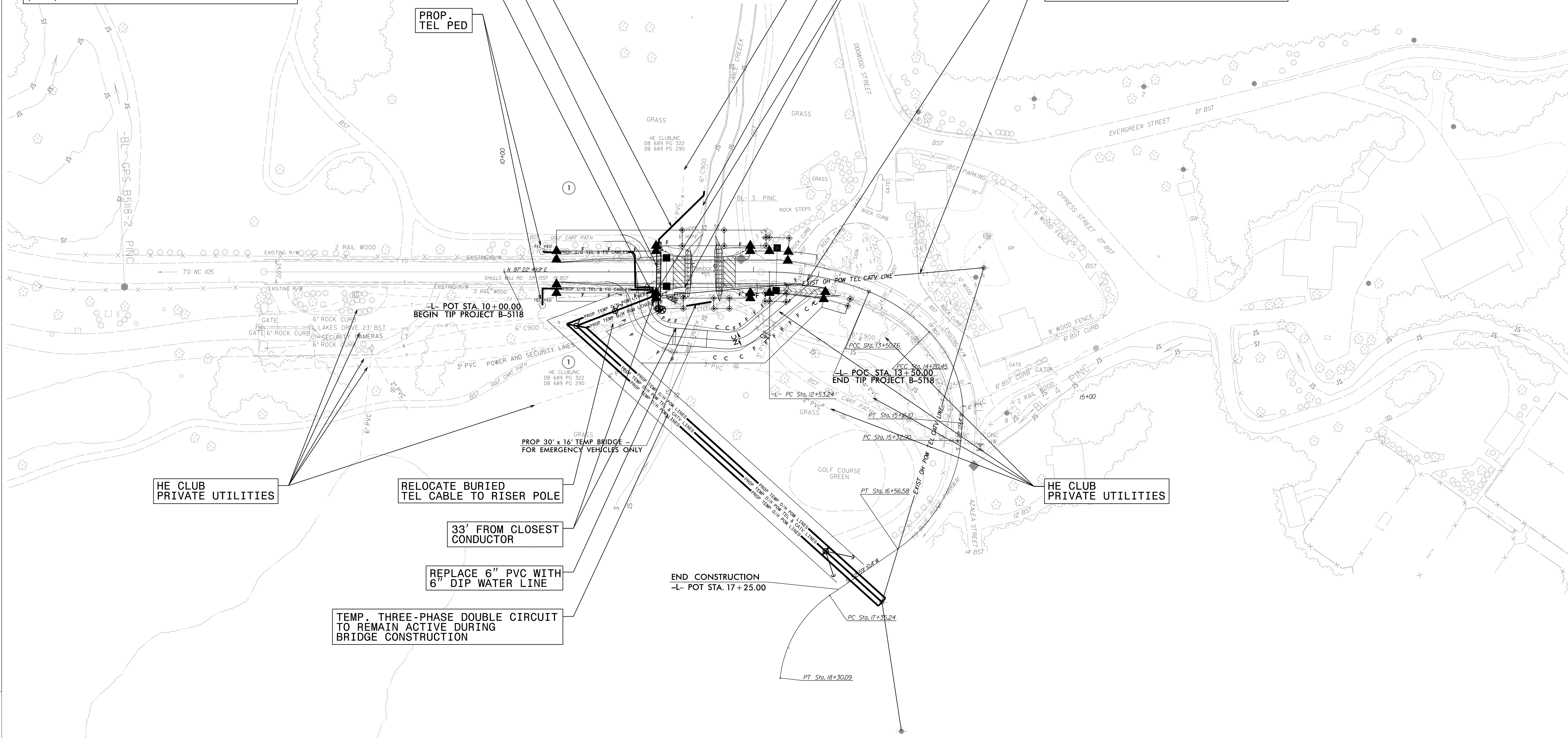
EXIST. THREE-PHASE DOUBLE CIRCUIT TO REMAIN ACTIVE DURING DETOUR BRIDGE CONSTRUCTION

TRANSFER EXIST. TEL AND CATV LINES TO BREMC'S TEMP POLES

NAD 83

REVISIONS

3/21/2016 9:34:08 AM Y:\Projects\Watauga County\Utilities\B5118_ut_rdy4_U02_psh_level1_symb.dgn USER: ccrewsome



HE CLUB PRIVATE UTILITIES

RELOCATE BURIED TEL CABLE TO RISER POLE

33' FROM CLOSEST CONDUCTOR

REPLACE 6" PVC WITH 6" DIP WATER LINE

TEMP. THREE-PHASE DOUBLE CIRCUIT TO REMAIN ACTIVE DURING BRIDGE CONSTRUCTION

END CONSTRUCTION
-L- POT STA. 17 + 25.00

HE CLUB PRIVATE UTILITIES

Michael Baker
INTERNATIONAL
Michael Baker Engineering, Inc.
8000 Regency Parkway, Suite 600
Cary, NC 27518
919-463-5488