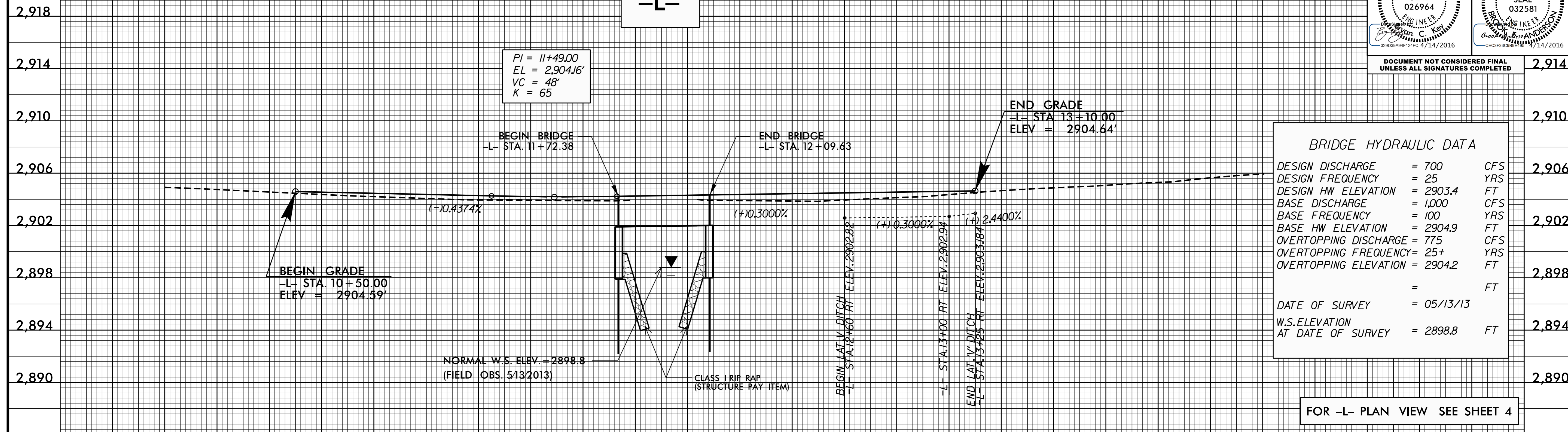


5/28/99

|                                 |                     |
|---------------------------------|---------------------|
| PROJECT REFERENCE NO.<br>B-5118 | SHEET NO.<br>6      |
| ROADWAY DESIGN ENGINEER         | HYDRAULICS ENGINEER |
|                                 |                     |

DOCUMENT NOT CONSIDERED FINAL UNLESS ALL SIGNATURES COMPLETED

2,918  
2,914  
2,910  
2,906  
2,902  
2,898  
2,894  
2,890



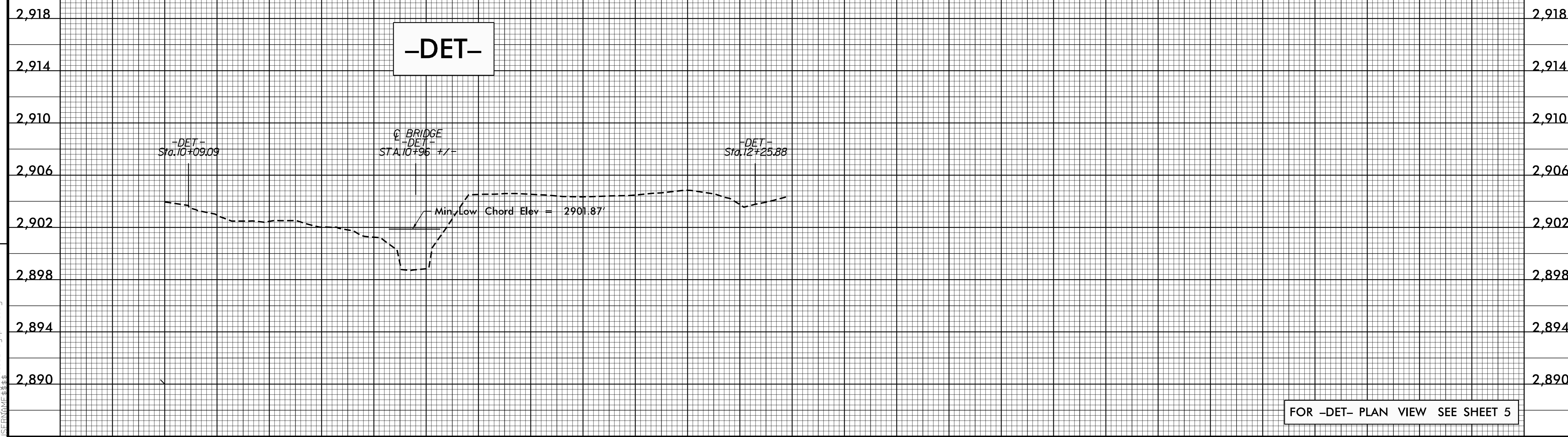
| BRIDGE HYDRAULIC DATA            |             |
|----------------------------------|-------------|
| DESIGN DISCHARGE                 | = 700 CFS   |
| DESIGN FREQUENCY                 | = 25 YRS    |
| DESIGN HW ELEVATION              | = 2903.4 FT |
| BASE DISCHARGE                   | = 1,000 CFS |
| BASE FREQUENCY                   | = 100 YRS   |
| BASE HW ELEVATION                | = 2904.9 FT |
| OVERTOPPING DISCHARGE            | = 775 CFS   |
| OVERTOPPING FREQUENCY            | = 25+ YRS   |
| OVERTOPPING ELEVATION            | = 2904.2 FT |
|                                  | = FT        |
| DATE OF SURVEY                   | = 05/13/13  |
| W.S. ELEVATION AT DATE OF SURVEY | = 2898.8 FT |

FOR -L- PLAN VIEW SEE SHEET 4

10+00                      11+00                      12+00                      13+00

REVISIONS

2,918  
2,914  
2,910  
2,906  
2,902  
2,898  
2,894  
2,890



FOR -DET- PLAN VIEW SEE SHEET 5

10+00                      11+00                      12+00                      13+00

13-APR-2016 10:36 v\_05118\_rdy\_p16.dgn