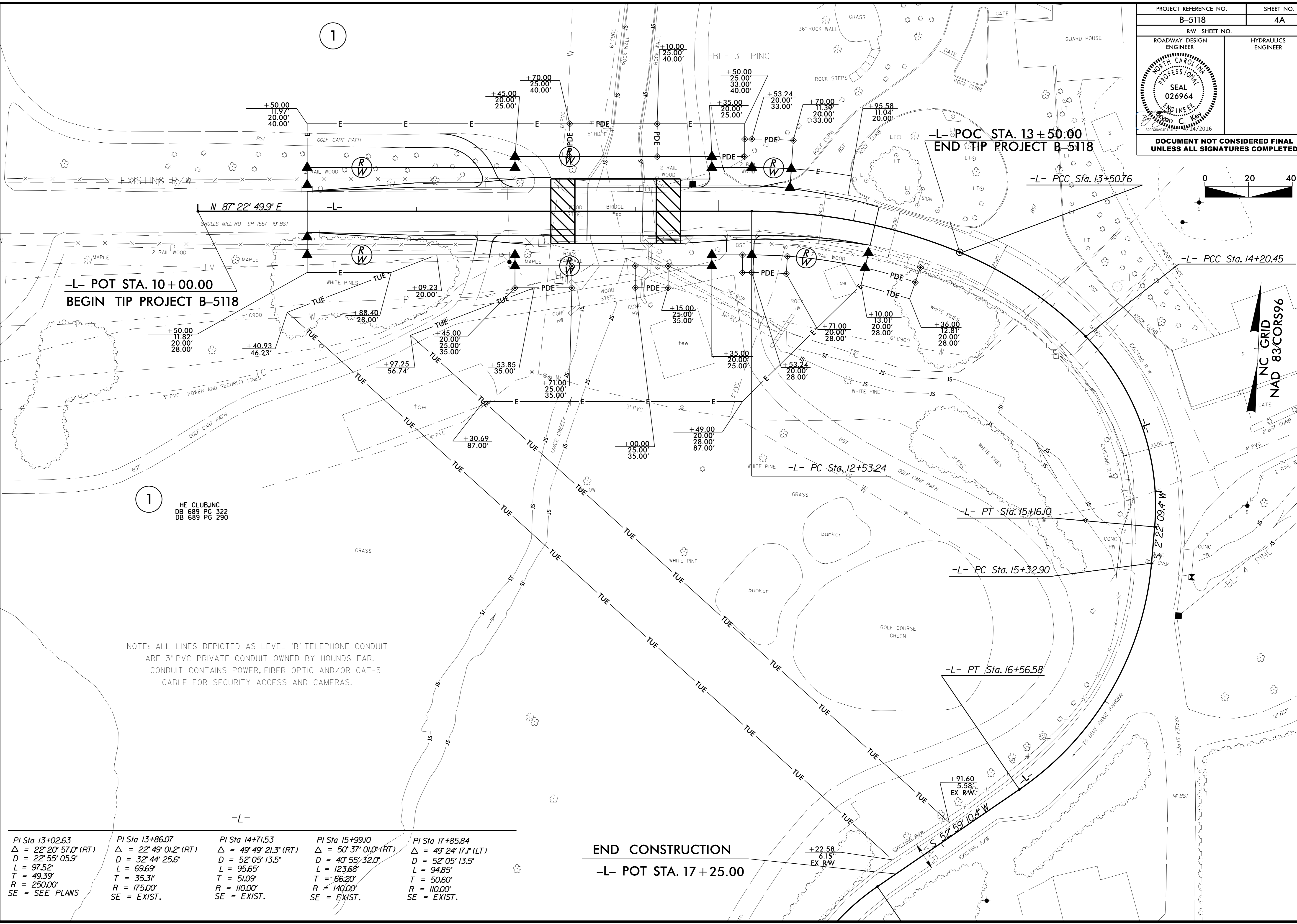


NC GRID
 NAD 83/CORS96

REVISIONS



NOTE: ALL LINES DEPICTED AS LEVEL 'B' TELEPHONE CONDUIT
 ARE 3" PVC PRIVATE CONDUIT OWNED BY HOUNDS EAR.
 CONDUIT CONTAINS POWER, FIBER OPTIC AND/OR CAT-5
 CABLE FOR SECURITY ACCESS AND CAMERAS.

PI Sta 13+02.63 $\Delta = 22^\circ 20' 57.0"$ (RT) $D = 22^\circ 55' 05.9"$ $L = 97.52'$ $T = 49.39'$ $R = 250.00'$ SE = SEE PLANS	PI Sta 13+86.07 $\Delta = 22^\circ 49' 01.2"$ (RT) $D = 32^\circ 44' 25.6"$ $L = 69.69'$ $T = 35.31'$ $R = 175.00'$ SE = EXIST.	PI Sta 14+71.53 $\Delta = 49^\circ 49' 21.3"$ (RT) $D = 52^\circ 05' 13.5"$ $L = 95.65'$ $T = 51.09'$ $R = 110.00'$ SE = EXIST.	PI Sta 15+99.10 $\Delta = 50^\circ 37' 01.0"$ (RT) $D = 40^\circ 55' 32.0"$ $L = 123.68'$ $T = 66.20'$ $R = 140.00'$ SE = EXIST.	PI Sta 17+85.84 $\Delta = 49^\circ 24' 17.1"$ (LT) $D = 52^\circ 05' 13.5"$ $L = 94.85'$ $T = 50.60'$ $R = 110.00'$ SE = EXIST.
--	---	---	--	---

05-APR-2016 10:54
 A:\5118_rdw_psh4a.dgn
 6:53 AM