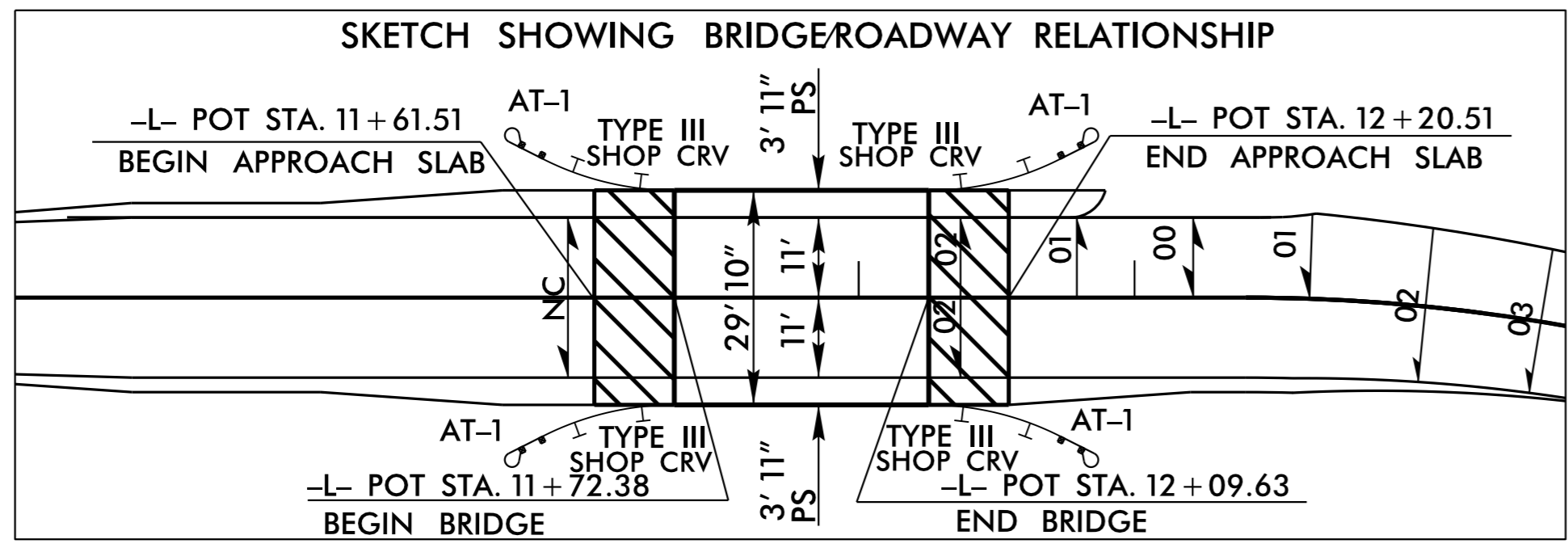
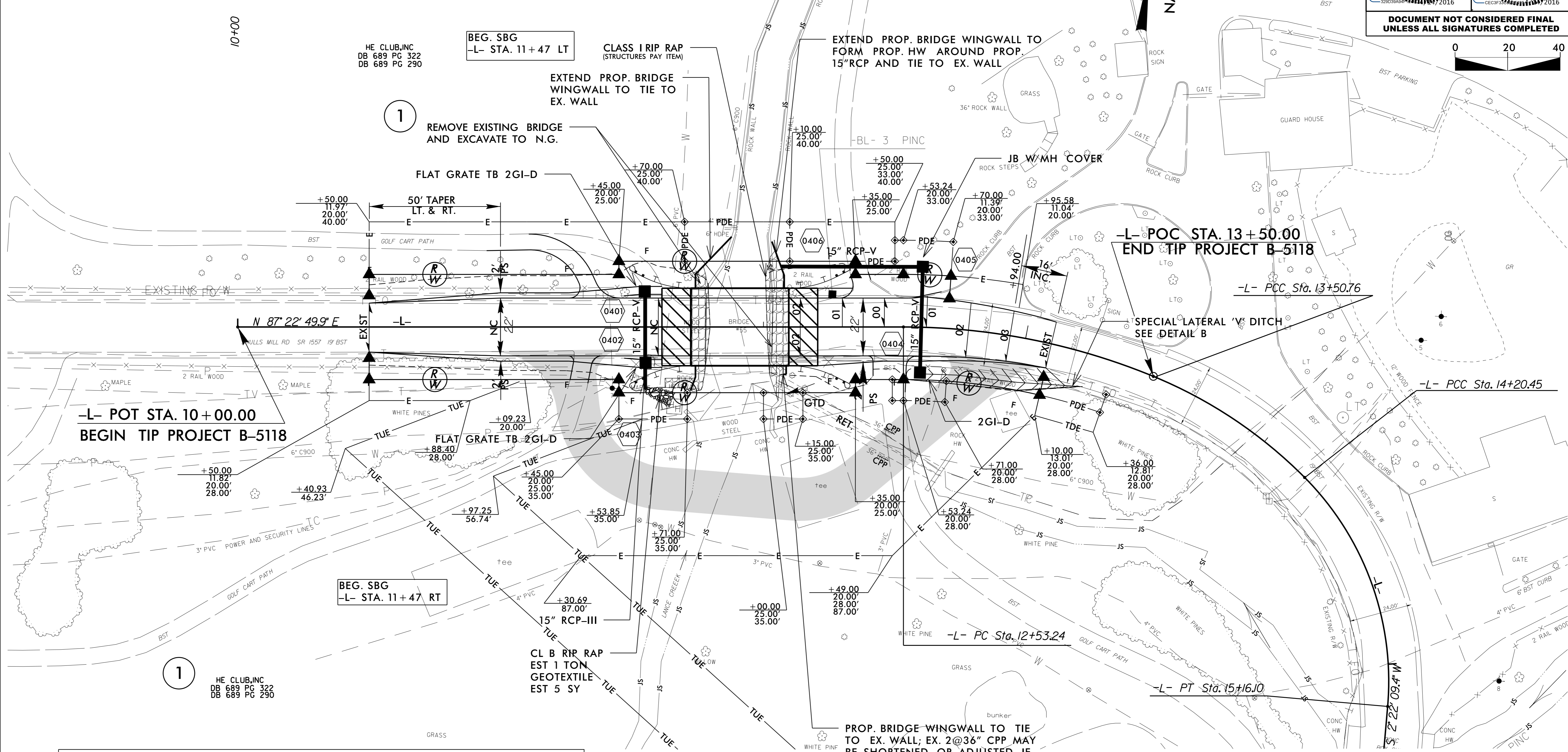
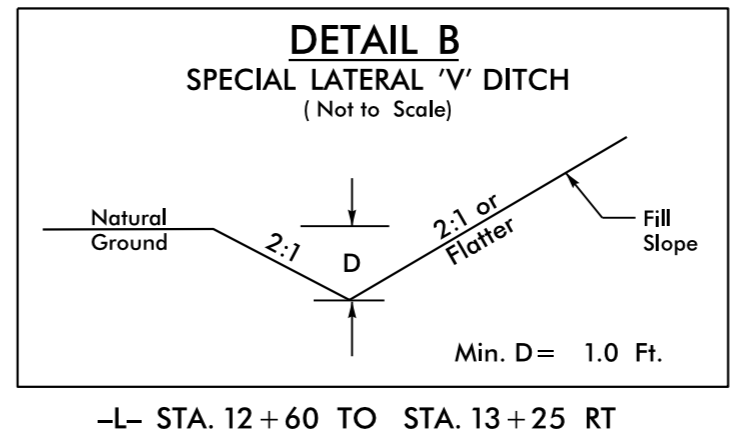


PI Sta 13+02.63 Δ = 22° 20' 57.0" (RT) D = 22° 55' 05.9" L = 97.52' T = 49.39' R = 250.00' SE = SEE PLANS	PI Sta 13+86.07 Δ = 22° 49' 01.2" (RT) D = 32° 44' 25.6" L = 69.69' T = 35.31' R = 175.00' SE = EXIST.	PI Sta 14+71.53 Δ = 49° 49' 21.3" (RT) D = 52° 05' 13.5" L = 95.65' T = 51.09' R = 110.00' SE = EXIST.	PI Sta 15+99.00 Δ = 50° 37' 01.0" (RT) D = 40° 55' 32.0" L = 123.68' T = 66.20' R = 140.00' SE = EXIST.	PI Sta 17+85.84 Δ = 49° 24' 17.1" (LT) D = 52° 05' 13.5" L = 94.85' T = 50.60' R = 110.00' SE = EXIST.
---	--	--	---	--



PROPOSED DETOUR (-DET-) ACCESS FOR EMERGENCY VEHICLES ONLY.



NOTE: SEE SHEET 4A FOR COMPLETE VIEW OF PROPOSED TEMPORARY UTILITY EASEMENT LIMITS.

SEE SHEET 2C-1 FOR TYPE III SHOP CURVE ANCHOR UNITS  
SEE SHEET 5 FOR -DET- PLAN VIEW  
SEE SHEET 6 FOR -L- PROFILE  
SEE SHEET S-1 THRU S-20 FOR STRUCTURE PLANS

REVISIONS

13-APR-2016 12:01 \\s5118-rdy-pst4.dgn