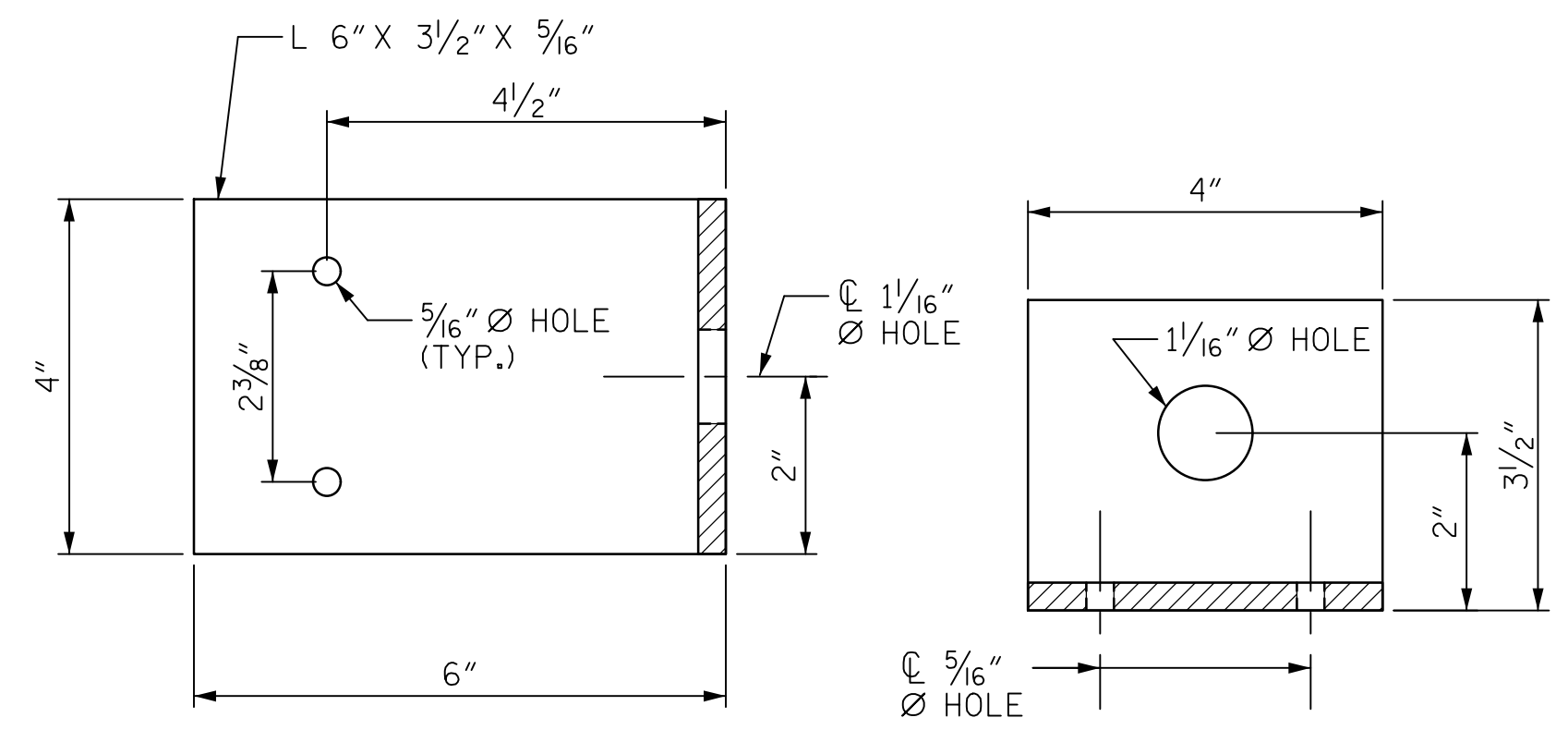


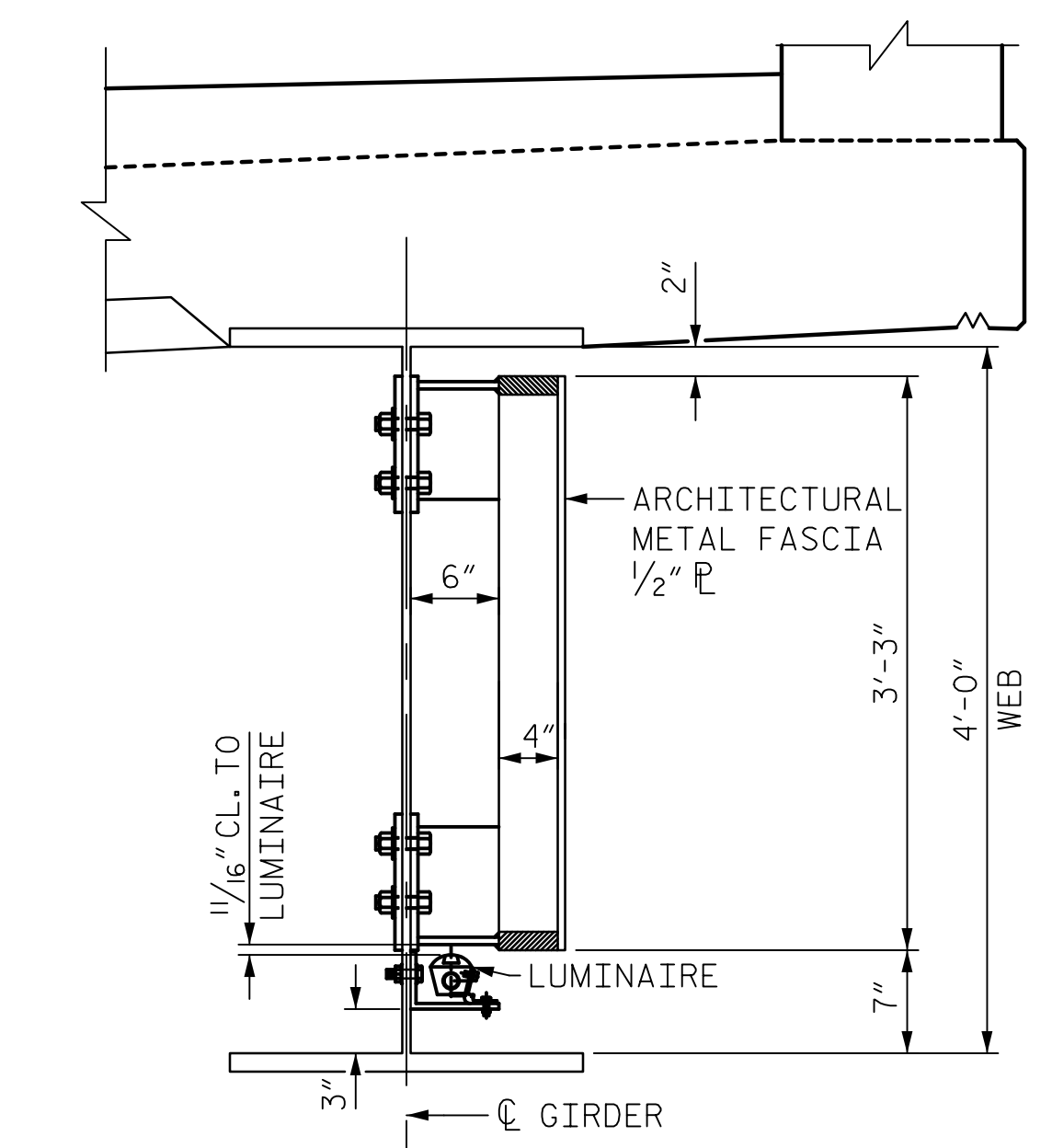
ELEVATION

NOTE: LUMINAIRE AND CONNECTION BRACKETS MAY BE ADJUSTED BY THE FOLLOWING LIMITS TO CLEAR PANEL SUPPORT BRACKETS, DIAPHRAGMS AND OTHER CONFLICTS. JUMPER CABLE LENGTH IS DEPENDENT ON LUMINAIRE SPACING. LONGER JUMPER CABLES WILL BE REQUIRED FOR LUMINAIRE SPACING EXCEEDING 4'-4".

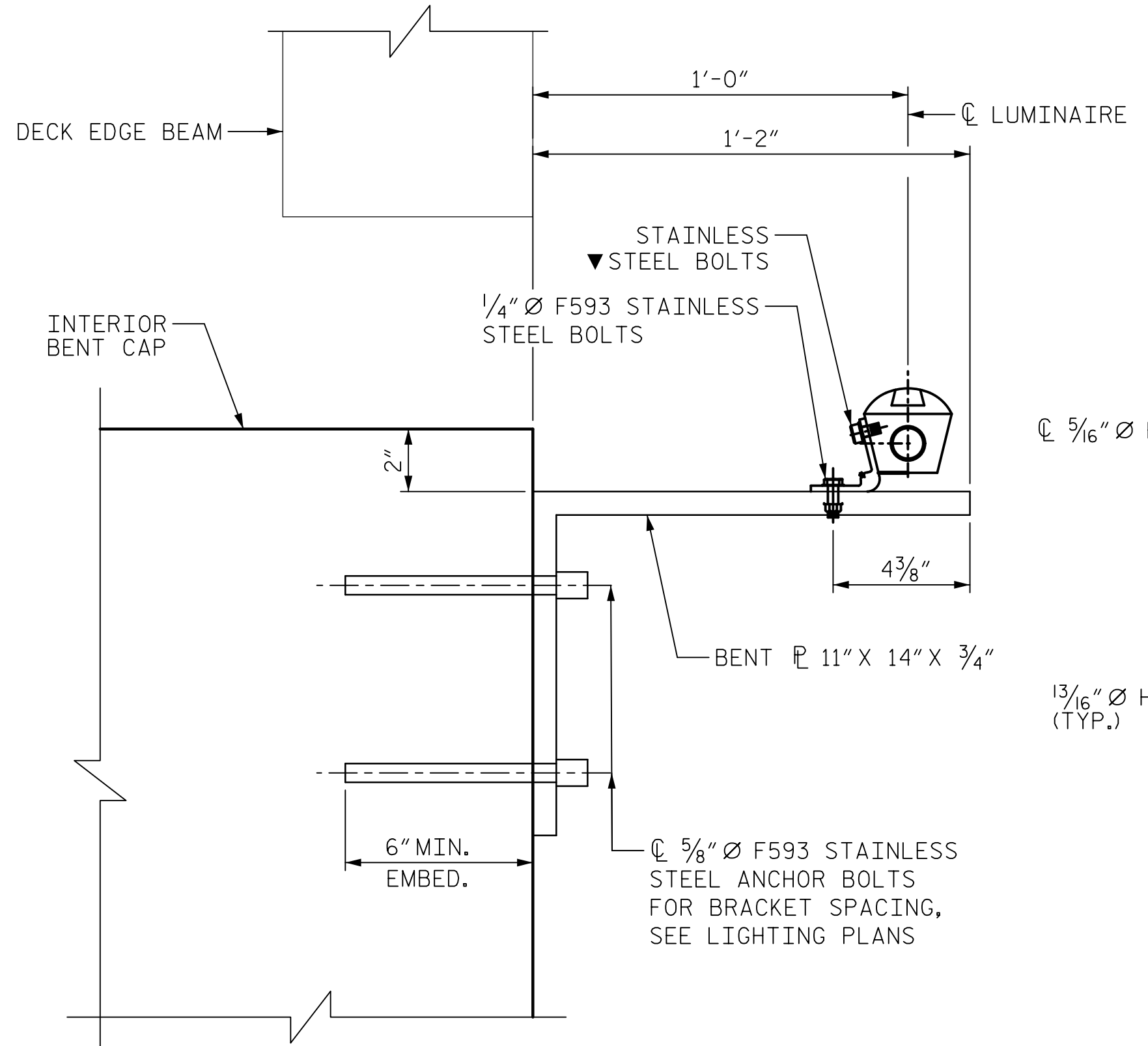
- ▲ 3'-0" MAX.; 1'-7" MIN.
- ★ 1'-6" MAX.; 1/4" MIN.
- * 4'-6" MAX.; 4'-0 1/4" MIN.
- ** 1'-6" MAX.; 6" MIN.



TYPE "A" BRACKET
(2 REQUIRED PER LUMINAIRE)

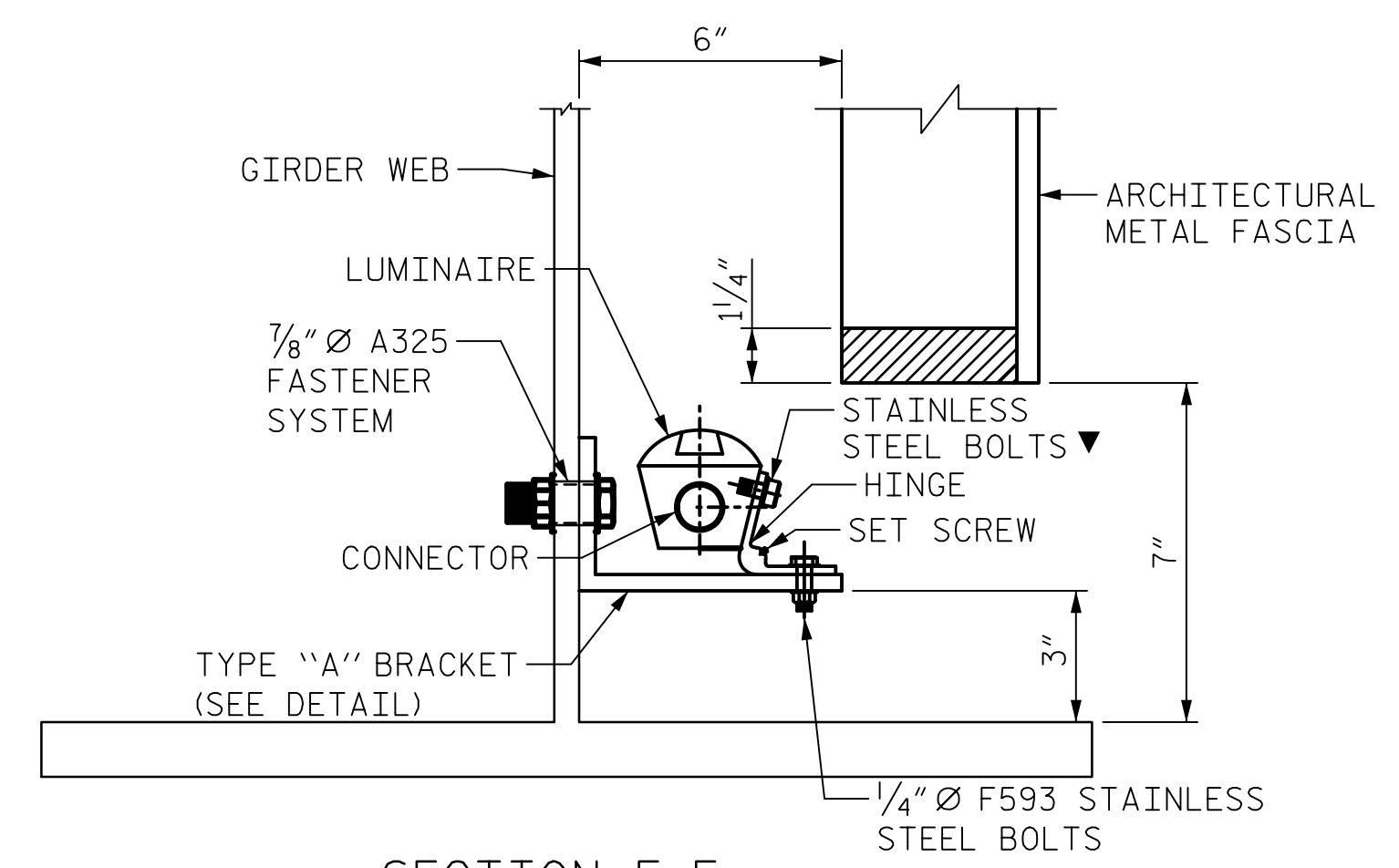


GIRDER SECTION
AT BRIDGE FASCIA



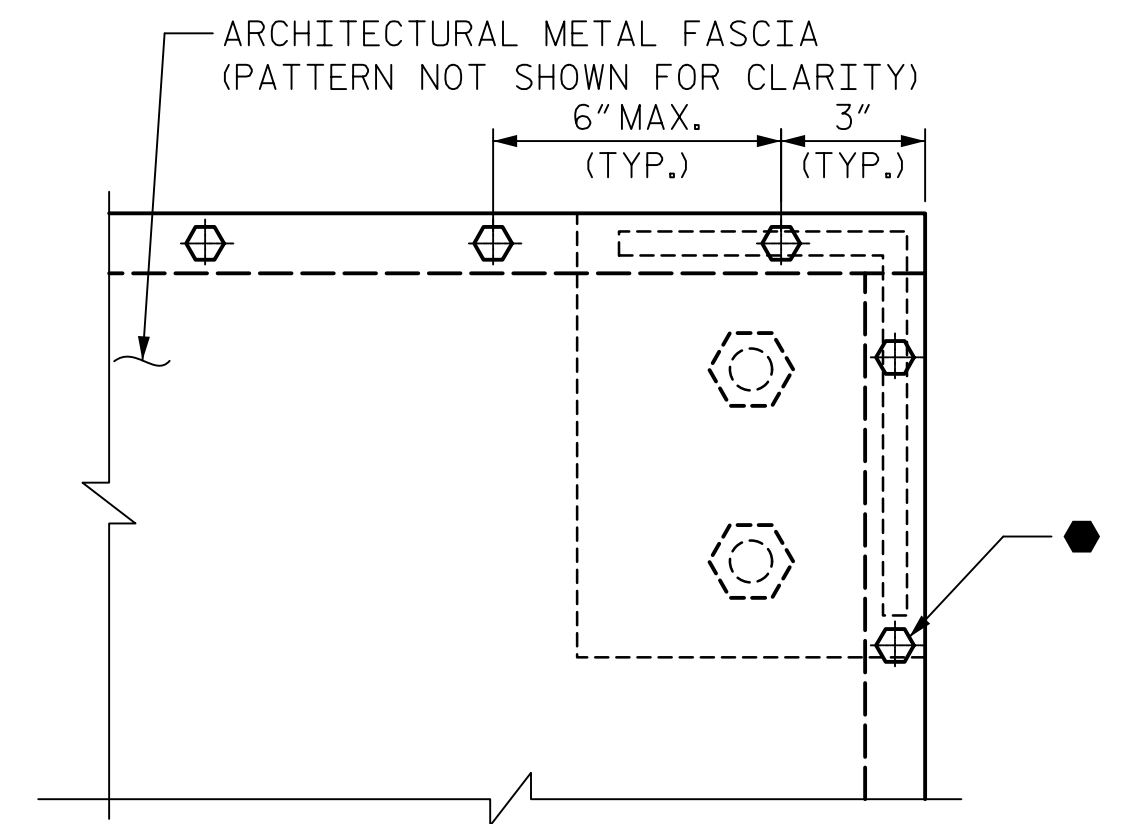
MEDALLION LUMINAIRE BRACKET AT BENT PILASTER
(2 REQUIRED PER LUMINAIRE)

▼ SIZE PER LUMINAIRE MANUFACTURER'S SPECIFICATIONS



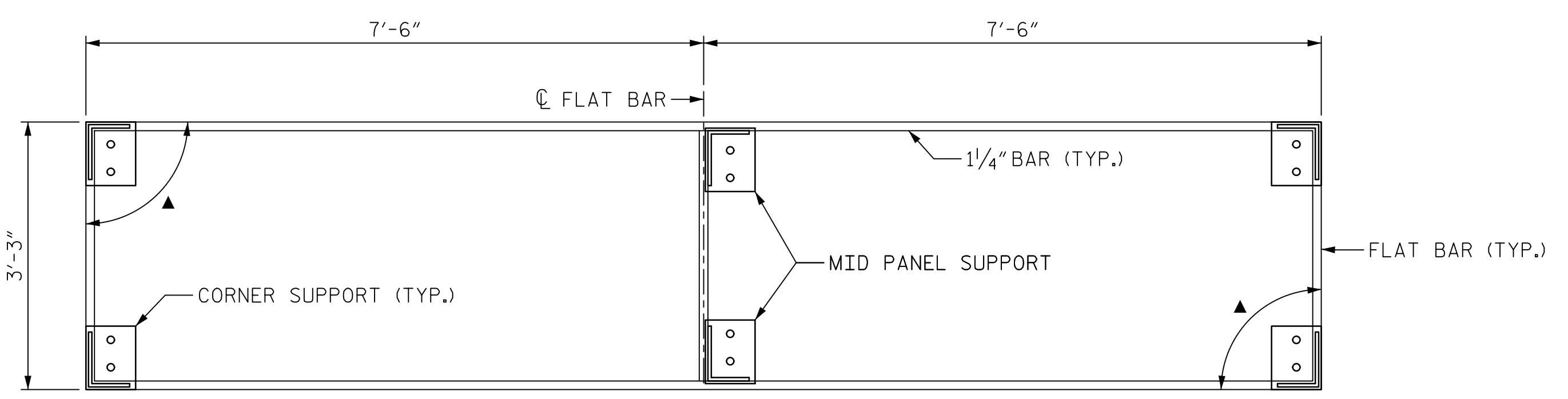
SECTION E-E

▼ SIZE PER LUMINAIRE MANUFACTURER'S SPECIFICATIONS



PANEL TO FRAME CONNECTION

● 3/8" Ø X 1 1/2" F593 ALLOY 304 STAINLESS STEEL FASTENER WITH STAINLESS STEEL SPRINGLOCK WASHER; DRILL AND TAP 2" DEEP HOLE INTO PERIMETER FLAT BAR FRAME FOR 1/2" FASTENER. ALL LOCK WASHERS SHALL BE FULLY ENGAGED PRIOR TO ACCEPTANCE. CONTRACTOR SHALL USE THREADLOCK SUCH AS LOCTITE BLUE OR EQUAL DURING INSTALLATION OF FASTENER. THE THREADLOCK SHALL ALLOW FOR FUTURE DISASSEMBLY. FASCIA PANELS SHALL NOT BE BOLTED TO CENTER BAR OF FRAME SYSTEM. BOLT HEADS SHALL BE ON THE EXPOSED SIDE OF THE FASCIA PANELS (TYP.)



ARCHITECTURAL METAL FASCIA FRAME ELEVATION

▲ ANGLE BETWEEN TOP/BOTTOM BAR AND VERTICAL BAR MAY VARY DEPENDING ON FINAL GIRDER GEOMETRY AFTER BRIDGE DECK AND RAILING IS CAST.

PROJECT NO. B-5121/B-5317
WAKE COUNTY
 STATION: 20+19.94 -FLYOVER-

SHEET 1 OF 2

AECOM
 AECOM TECHNICAL SERVICES, INC.
 701 CORPORATE CENTER DRIVE, SUITE 475
 RALEIGH, NC 27607
 (919) 854-6200 www.aecom.com
 AECOM License No. F-0342

6/2/2016

PROFESSIONAL SEAL
 038447
 ENGINEER
 ANDREW S. MILLER

Andrew S. Miller
 CSD07972AC0E438...

STATE OF NORTH CAROLINA DEPARTMENT OF TRANSPORTATION RALEIGH					
ARCHITECTURAL METAL FASCIA DETAILS					
REVISIONS					
NO.	BY:	DATE:	NO.	BY:	DATE:
1			3		
2			4		
SHEET NO. S-110A					TOTAL SHEETS 110

DRAWN BY : K.H. COMPTON DATE : 4/2016
 CHECKED BY : A.S. MILLER DATE : 4/2016
 DESIGNED BY : G.L. HAMILTON DATE : 4/2016

DOCUMENT NOT CONSIDERED
 FINAL UNLESS ALL
 SIGNATURES COMPLETED

DATE: 6/2/2016 TIME: 12:52:05 PM
 USER: P:\6\Comp\100_Technical\008_Structural\Drawings\Wade_Ave\02_L008B_B-5121_L_fascia_3.dgn
 DGN: P:\6\Comp\100_Technical\008_Structural\Drawings\Wade_Ave\02_L008B_B-5121_L_fascia_3.dgn