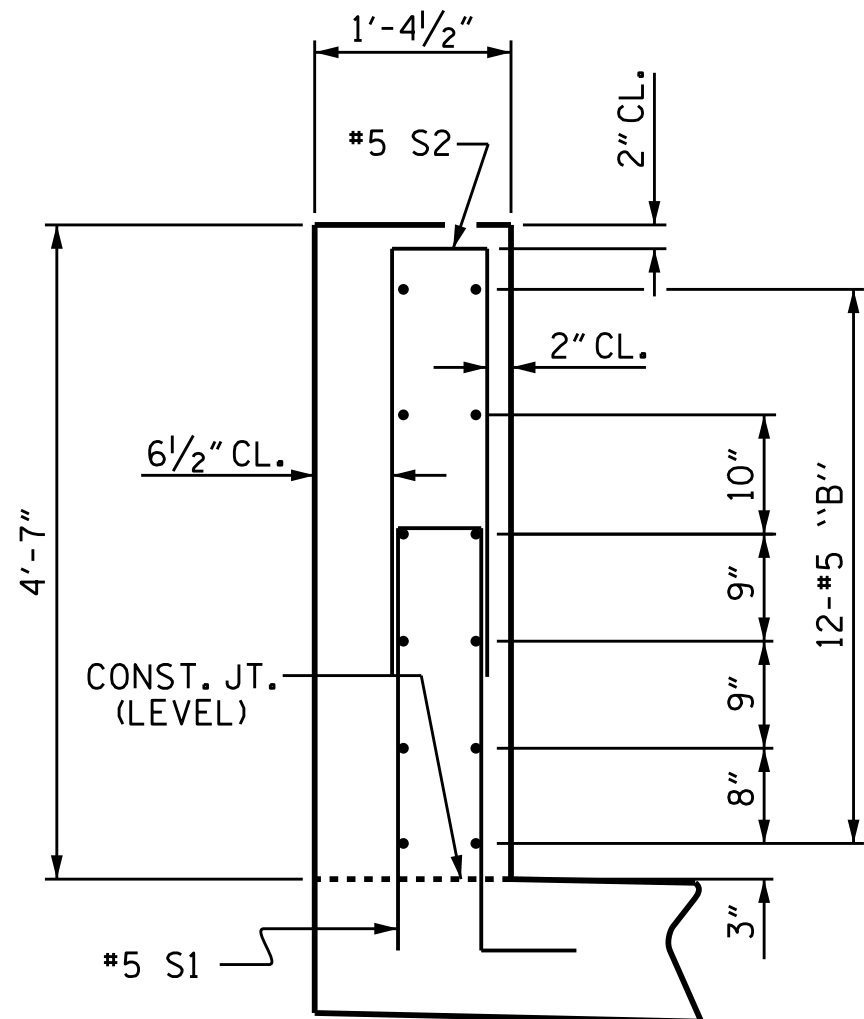


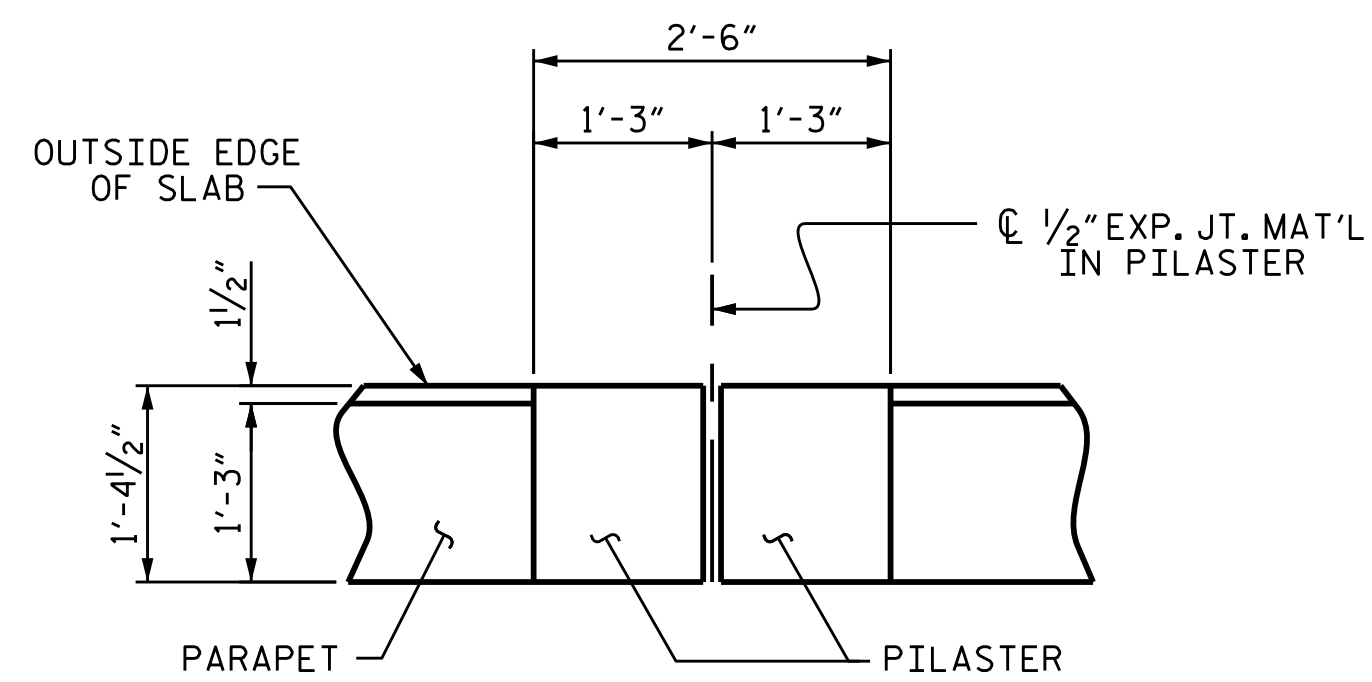
SECTION THROUGH PARAPET (LEFT SIDE)

SIDEWALK NOT SHOWN FOR CLARITY. RECESSES IN PARAPET NOT SHOWN, SEE "RAIL AESTHETIC DETAILS" SHEETS. FOR CLARITY DECK EDGE BEAM NOT SHOWN, FOR DETAILS, SEE "DECK EDGE BEAM" SHEETS.



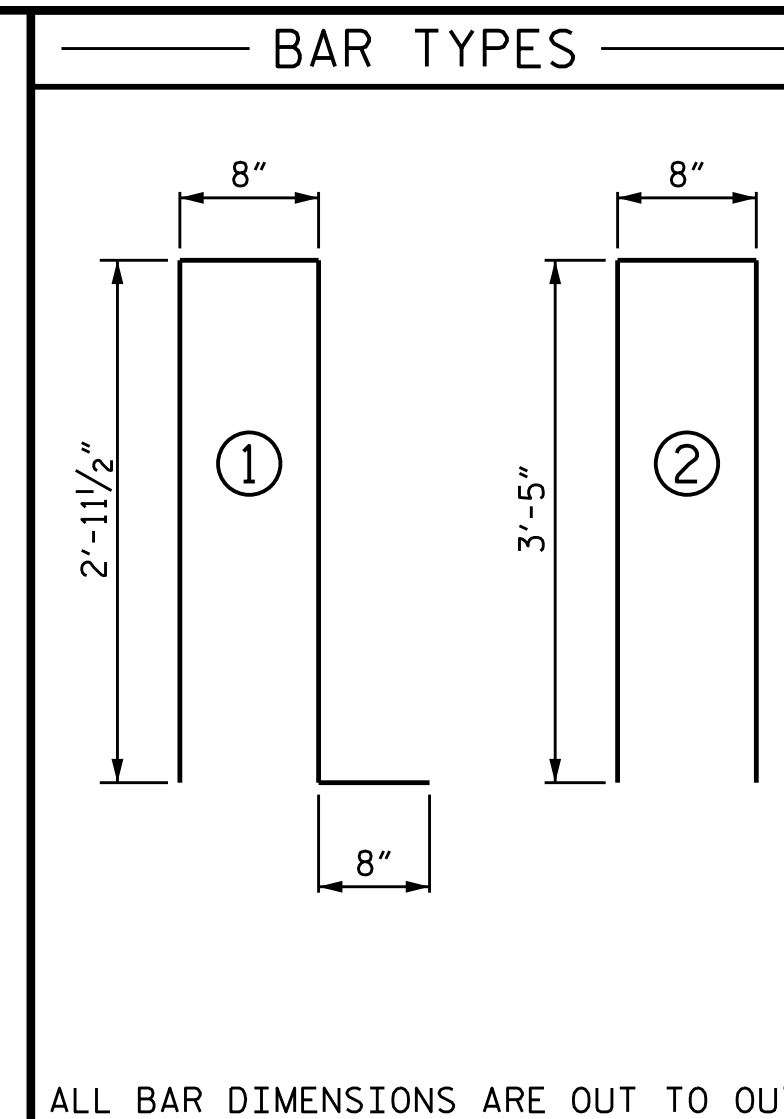
SECTION THROUGH PILASTER (LEFT SIDE)

SIDEWALK NOT SHOWN FOR CLARITY



PLAN VIEW OF PILASTER

SIDEWALK NOT SHOWN FOR CLARITY LEFT SIDE SHOWN, RIGHT SIDE SIMILAR FOR ADDITIONAL DETAILS, SEE "RAIL AESTHETIC DETAILS" SHEETS

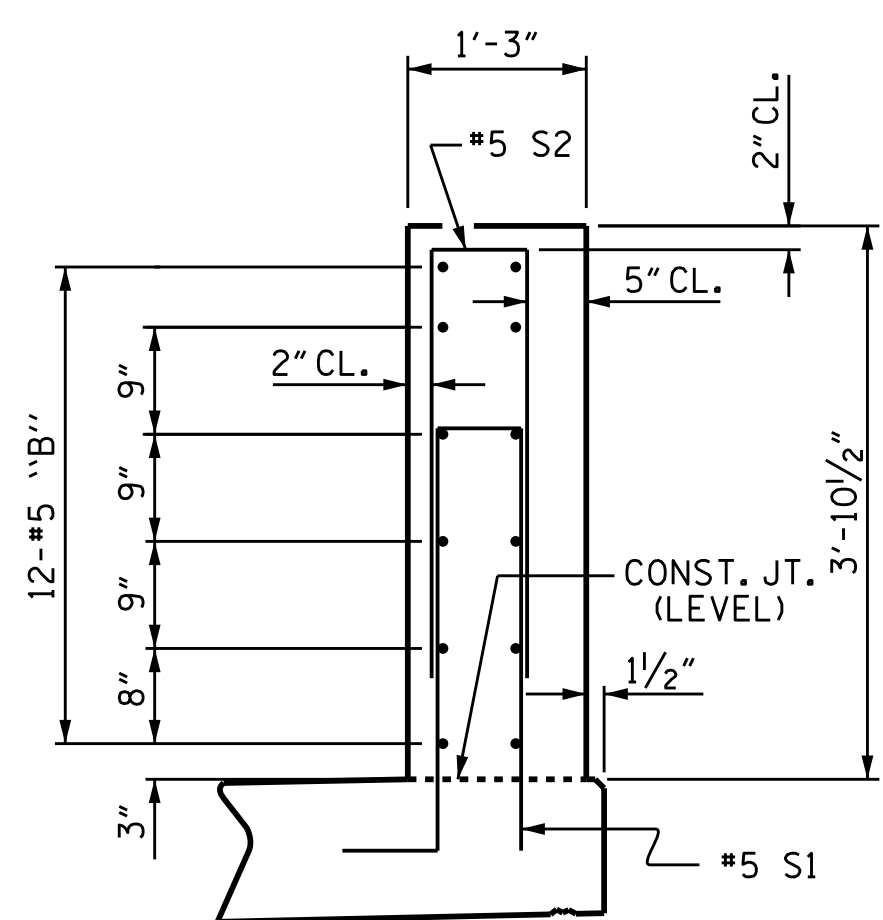


ALL BAR DIMENSIONS ARE OUT TO OUT

BILL OF MATERIAL

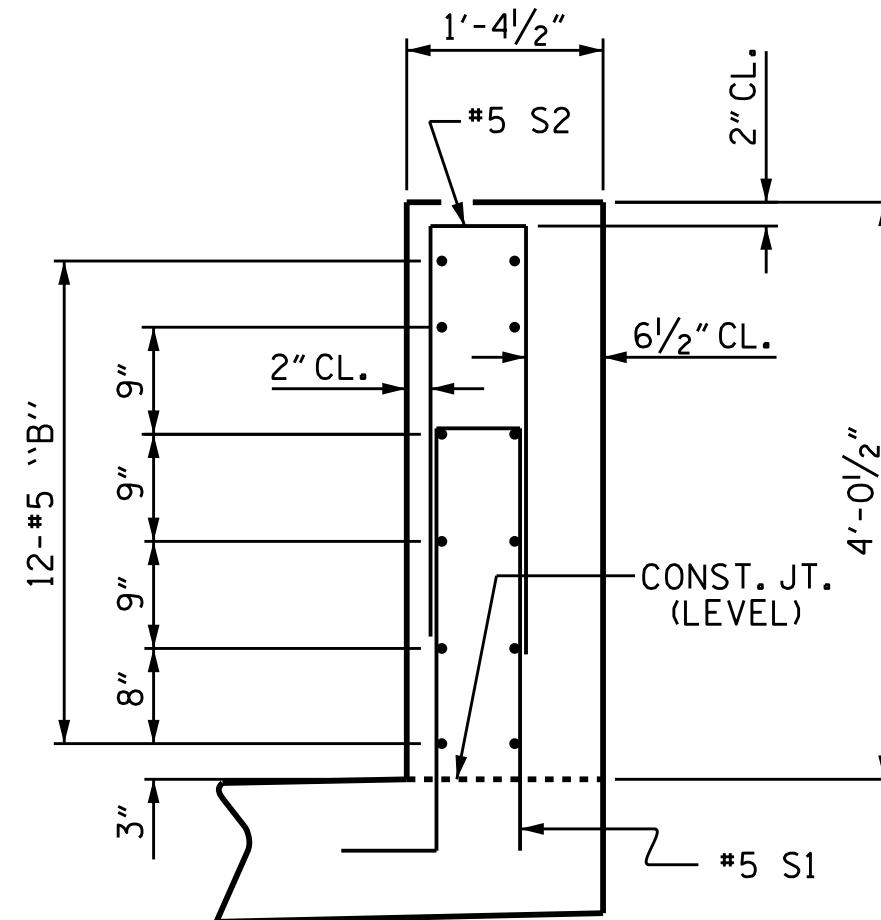
CONCRETE PARAPET

BAR	NO.	SIZE	TYPE	LENGTH	WEIGHT
* B1	24	#5	STR	28'-11"	724
* B2	12	#5	STR	27'-3"	341
* B3	36	#5	STR	27'-0"	1014
* B4	12	#5	STR	23'-8"	296
* B5	48	#5	STR	23'-6"	1177
* B6	36	#5	STR	23'-5"	879
* B7	12	#5	STR	21'-9"	272
* B8	36	#5	STR	21'-8"	814
* B9	36	#5	STR	20'-0"	751
* S1	513	#5	1	7'-3"	3879
* S2	513	#5	2	7'-6"	4013
* EPOXY COATED REINF. STEEL					14160 LBS.
CLASS AA CONCRETE					99.4 C.Y.
DECORATIVE CONCRETE PARAPET					509.82 L.F.



SECTION THROUGH PARAPET (RIGHT SIDE)

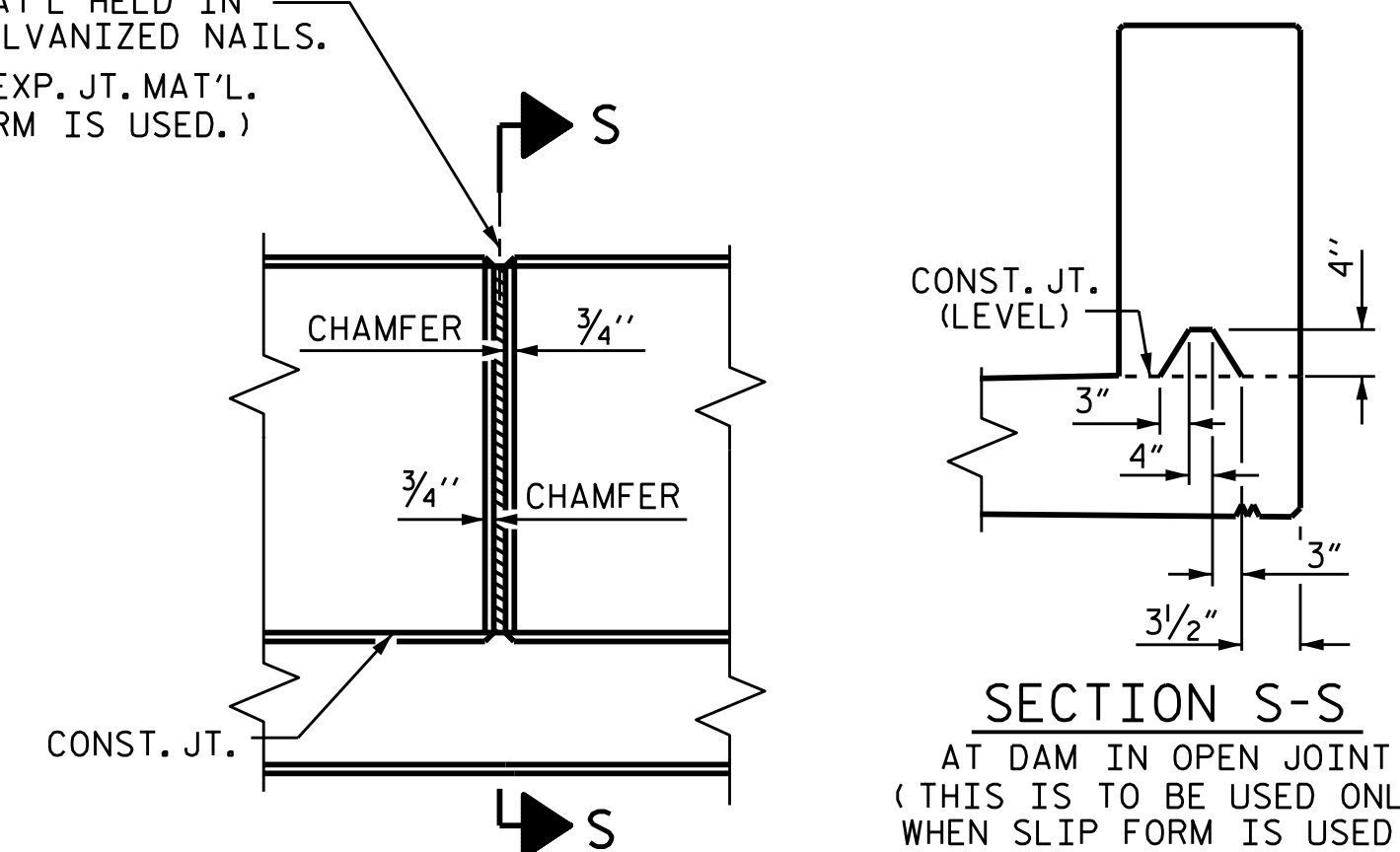
SIDEWALK NOT SHOWN FOR CLARITY. RECESSES IN PARAPET NOT SHOWN, SEE "RAIL AESTHETIC DETAILS" SHEETS. FOR CLARITY DECK EDGE BEAM NOT SHOWN, FOR DETAILS, SEE "DECK EDGE BEAM" SHEETS.



SECTION THROUGH PILASTER (RIGHT SIDE)

SIDEWALK NOT SHOWN FOR CLARITY

1/2" EXP. JT. MAT'L HELD IN PLACE WITH GALVANIZED NAILS. (NOTE: OMIT EXP. JT. MAT'L WHEN SLIP FORM IS USED.)



ELEVATION AT EXPANSION JOINTS

CONCRETE PARAPET DETAILS

NOTES

ALL REINFORCING STEEL IN PARAPETS SHALL BE EPOXY COATED.

GROOVED CONTRACTION JOINTS, 1/2" IN DEPTH, SHALL BE TOOLED IN ALL EXPOSED FACES OF THE PARAPET AND IN ACCORDANCE WITH ARTICLE 825-10(B) OF THE STANDARD SPECIFICATIONS. A CONTRACTION JOINT SHALL BE LOCATED AT EACH THIRD POINT BETWEEN PARAPET EXPANSION JOINTS. ONLY ONE CONTRACTION JOINT IS REQUIRED AT MIDPOINT OF PARAPET SEGMENTS LESS THAN 20 FEET IN LENGTH AND NO CONTRACTION JOINTS ARE REQUIRED FOR THOSE SEGMENTS LESS THAN 10 FEET IN LENGTH.

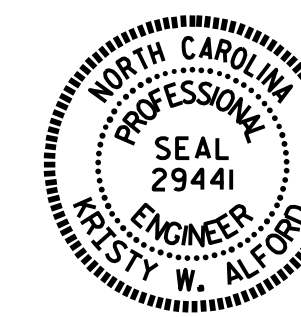
THREADED RODS FOR PRECAST PANELS ARE NOT SHOWN FOR CLARITY. SEE "PRECAST PANEL" SHEETS FOR LOCATION AND DETAILS OF THREADED RODS. REINFORCING STEEL MAY BE SHIFTED SLIGHTLY TO AVOID INTERFERENCE WITH THREADED RODS.

PARAPET IN A CONTINUOUS UNIT SHALL NOT BE CAST UNTIL ALL SLAB CONCRETE IN THE UNIT HAS BEEN CAST AND HAS REACHED A MINIMUM COMPRESSIVE STRENGTH OF 3,000 PSI.

AESTHETIC DETAILS NOT SHOWN FOR CLARITY. SEE "RAIL AESTHETIC DETAILS" SHEETS.

FOR CLARITY DECK EDGE BEAM NOT SHOWN, FOR DETAILS AND REINFORCING STEEL, SEE "DECK EDGE BEAM" SHEETS.

FOR DECORATIVE CONCRETE PARAPET, SEE SPECIAL PROVISIONS.



DocuSigned by: W. ALFORD 4/13/2016

DRAWN BY : J.P. ADAMS DATE : 12/2015  
 CHECKED BY : I.L. AVERETTE DATE : 2/2016  
 DESIGN ENGINEER OF RECORD: R.L. CHESSON DATE : 2/2016

DOCUMENT NOT CONSIDERED FINAL UNLESS ALL SIGNATURES COMPLETED

PROJECT NO. B-5121/B-5317

WAKE COUNTY

STATION: 20+19.94 -FLYOVER-

SHEET 3 OF 3

STATE OF NORTH CAROLINA  
 DEPARTMENT OF TRANSPORTATION  
 RALEIGH

SUPERSTRUCTURE  
 CONCRETE PARAPET

REVISIONS

NO.	BY:	DATE:	NO.	BY:	DATE:	SHEET NO.
1			3			S-76
2			4			TOTAL SHEETS 110

STR. #2