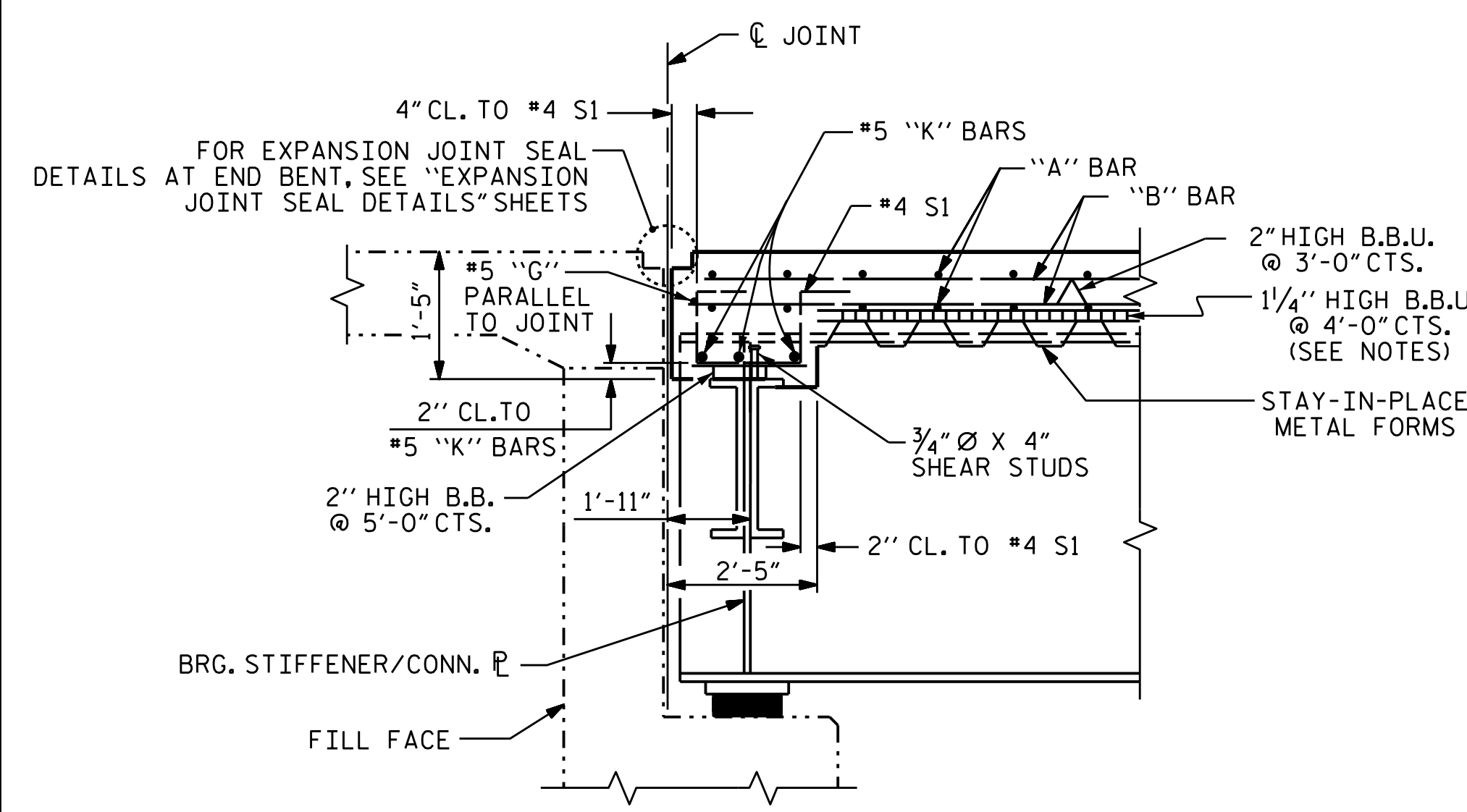


PARTIAL TYPICAL SECTION
(SHOWING END BENT DIAPHRAGMS)

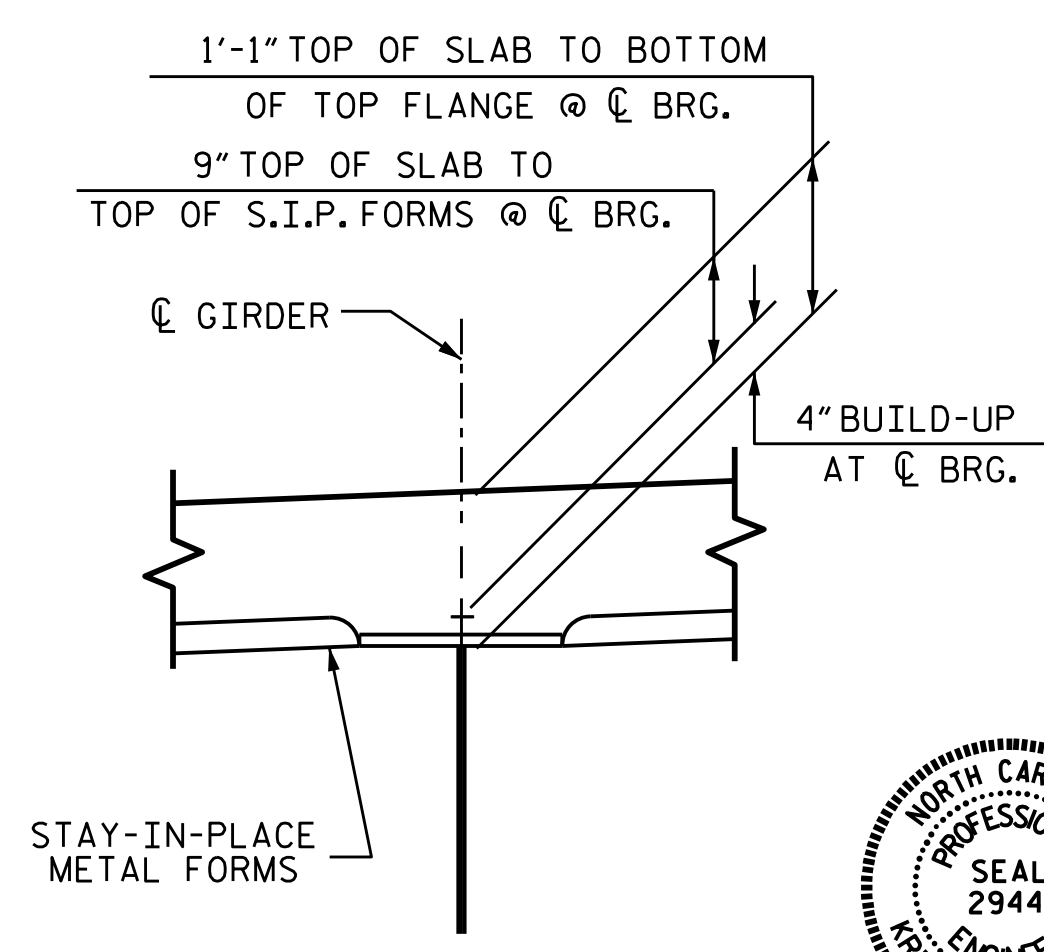
PARTIAL TYPICAL SECTION
(SHOWING BENT DIAPHRAGMS)

NOTES

- PROVIDE 1/4" HIGH BEAM BOLSTERS UPPER AT 4'-0" CTS. ATOP THE METAL STAY-IN-PLACE FORMS TO SUPPORT THE BOTTOM MAT OF 'A' BARS. WHEN USING REMOVABLE FORMS, PROVIDE CONTINUOUS HIGH CHAIRS FOR METAL DECK (C.H.C.M.) @ 4'-0" CTS. WITH A HEIGHT TO SUPPORT THE BOTTOM MAT OF 'A' BARS A CLEAR DISTANCE OF 2 1/2" ABOVE THE TOP OF THE REMOVABLE FORM.
- METAL STAY-IN-PLACE FORMS SHALL NOT BE WELDED TO BEAM OR GIRDER FLANGES IN THE ZONES REQUIRING CHАРRY V-NOTCH TEST. SEE STRUCTURAL STEEL DETAIL SHEETS.
- PREVIOUSLY CAST CONCRETE IN A CONTINUOUS UNIT SHALL HAVE ATTAINED A MINIMUM COMPRESSIVE STRENGTH OF 3,000 PSI BEFORE ADDITIONAL CONCRETE IS CAST IN THE UNIT.
- CONCRETE PARAPET, SIDEWALK AND CONCRETE MEDIAN IN A CONTINUOUS UNIT SHALL NOT BE CAST UNTIL ALL SLAB CONCRETE IN THE UNIT HAS BEEN CAST AND HAS REACHED A MINIMUM COMPRESSIVE STRENGTH OF 3,000 PSI.
- STRUCTURAL STEEL ERECTION IN A CONTINUOUS UNIT SHALL BE COMPLETE BEFORE FALSEWORK OR FORMS ARE PLACED ON THE UNIT.
- #5 'G' BAR MAY BE SHIFTED SLIGHTLY, AS NECESSARY, TO CLEAR REINFORCING STEEL AND STIRRUPS.
- ALL REINFORCING STEEL IN CONCRETE PARAPETS, SIDEWALKS AND CONCRETE MEDIANS SHALL BE EPOXY COATED.
- THE CONTRACTOR MAY, WHEN NECESSARY, PROPOSE A SCHEME FOR AVOIDING INTERFERENCE BETWEEN METAL STAY-IN-PLACE FORM SUPPORTS OR FORMS AND BEAM/GIRDER STIFFENERS OR CONNECTOR PLATES. THE PROPOSAL SHALL BE INDICATED, AS APPROPRIATE, ON EITHER THE STEEL WORKING DRAWINGS OR THE METAL STAY-IN-PLACE FORM WORKING DRAWINGS.
- FOR EXPANSION JOINT SEALS, SEE SPECIAL PROVISIONS.
- AESTHETIC DETAILS NOT SHOWN FOR CLARITY. FOR AESTHETIC DETAILS, SEE "PARAPET AESTHETIC DETAILS" SHEETS AND SPECIAL PROVISIONS.
- FOR CLARITY DECK EDGE BEAM NOT SHOWN. FOR DETAILS AND REINFORCING STEEL, SEE "DECK EDGE BEAM" SHEETS.
- THREADED RODS FOR PRECAST PANELS ARE NOT SHOWN FOR CLARITY. SEE "PRECAST PANEL" SHEETS FOR LOCATION AND DETAILS OF THREADED RODS.



SECTION THRU END BENT



DETAIL "A"

DRAWN BY : J.P. ADAMS DATE : 1/2016
 CHECKED BY : I.L. AVERETTE DATE : 2/2016
 DESIGN ENGINEER OF RECORD : R.L. CHESSON DATE : 2/2016

DOCUMENT NOT CONSIDERED FINAL UNLESS ALL SIGNATURES COMPLETED

PROJECT NO. B-5121/B-5317
 WAKE COUNTY
 STATION: 20+19.94 -FLYOVER-

STATE OF NORTH CAROLINA
 DEPARTMENT OF TRANSPORTATION
 RALEIGH
 SUPERSTRUCTURE
 TYPICAL SECTION

REVISIONS						SHEET NO.
NO.	BY:	DATE:	NO.	BY:	DATE:	TOTAL SHEETS
1			3			S-50
2			4			110