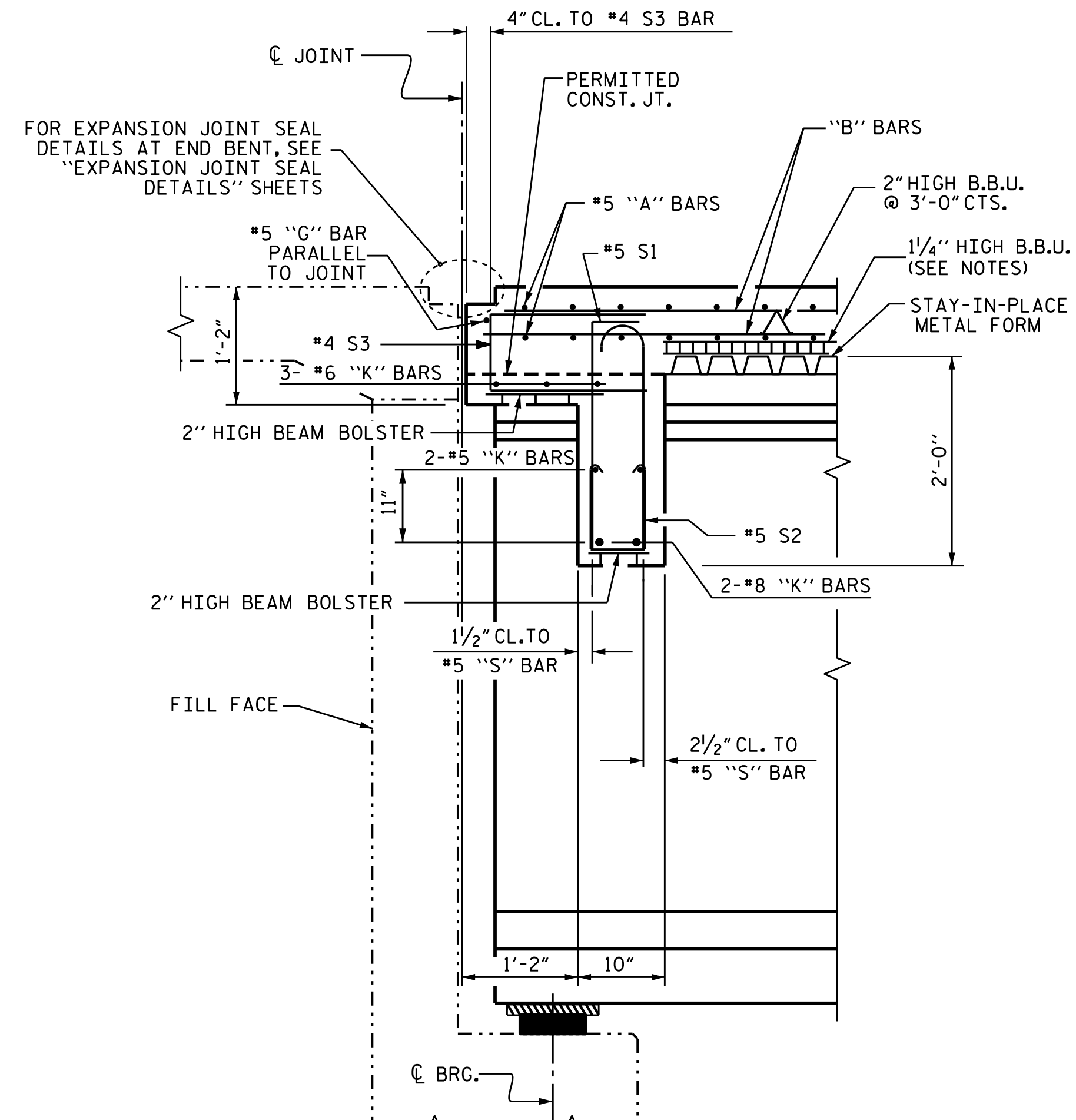


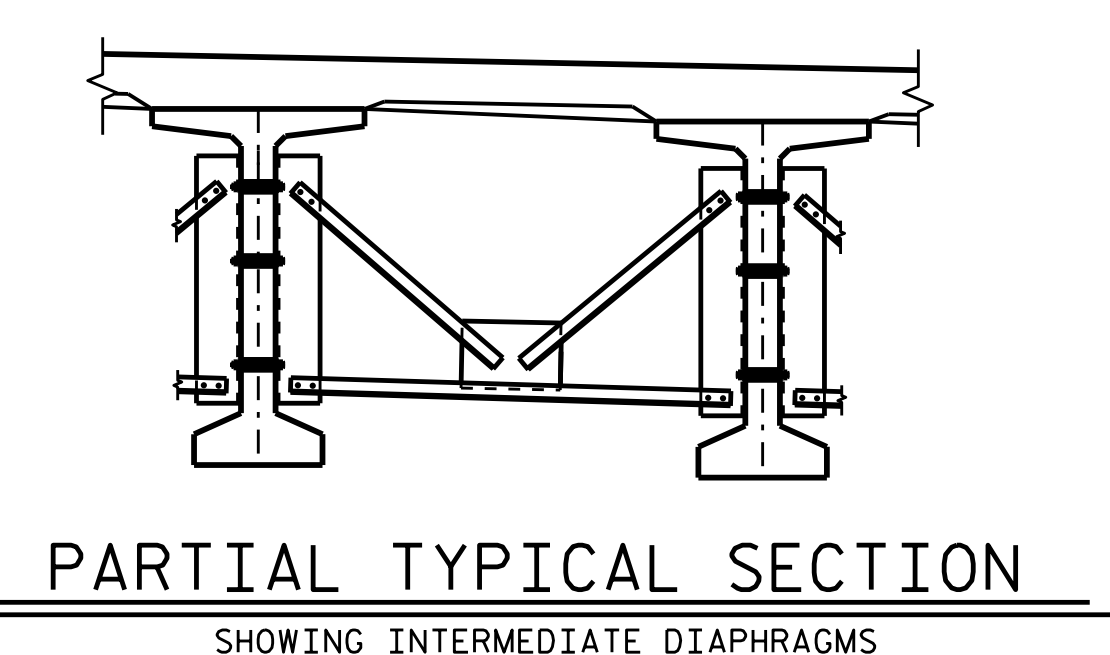
TYPICAL SECTION - STAGE II

SHOWING END BENT DIAPHRAGMS
 ** 5" CONCRETE MEDIAN SHALL BE PLACED DURING STAGE III CONSTRUCTION

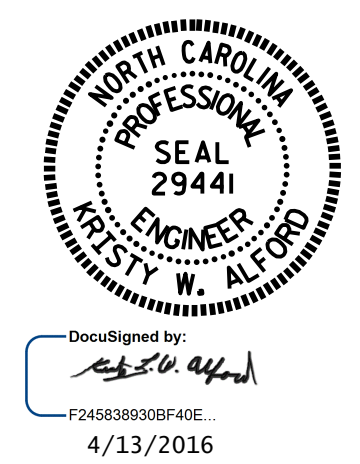


SECTION THRU END BENT DIAPHRAGM

#5 "G" BAR MAY BE SHIFTED SLIGHTLY, AS NECESSARY, TO CLEAR REINFORCING STEEL AND STIRRUPS.



PROJECT NO. B-5121/B-5317
 WAKE COUNTY
 STATION: 22+06.91 -L-
 SHEET 2 OF 2



STATE OF NORTH CAROLINA
 DEPARTMENT OF TRANSPORTATION
 RALEIGH

**SUPERSTRUCTURE
 TYPICAL SECTION
 STAGE II**

DRAWN BY: I.L. AVERETTE DATE: 1/16
 CHECKED BY: J.P. ADAMS DATE: 2/16
 DESIGN ENGINEER OF RECORD: I.L. AVERETTE DATE: 2/16

DOCUMENT NOT CONSIDERED FINAL UNLESS ALL SIGNATURES COMPLETED

REVISIONS						SHEET NO.
NO.	BY:	DATE:	NO.	BY:	DATE:	S-7
1			3			TOTAL SHEETS
2			4			110