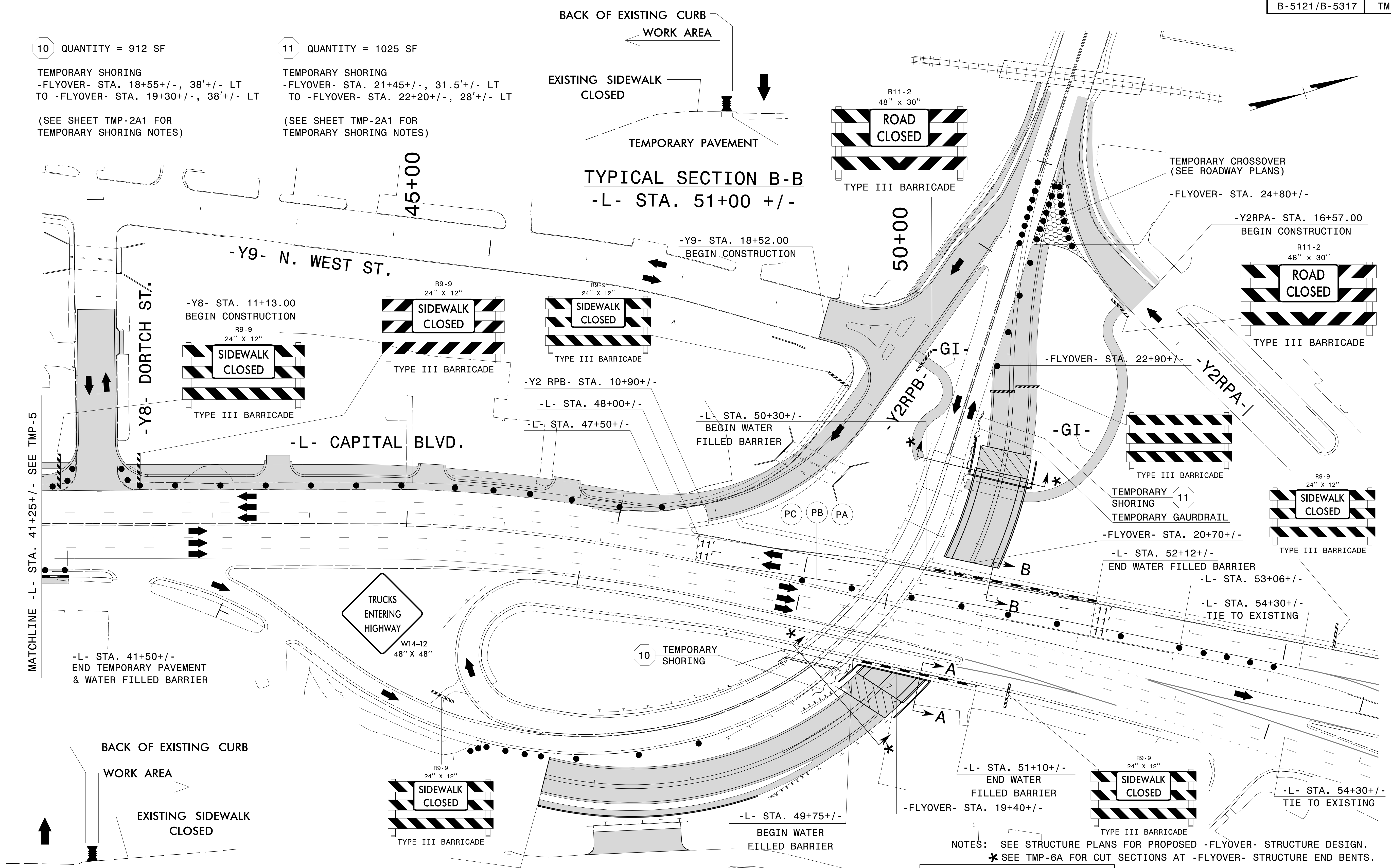


10 QUANTITY = 912 SF
 TEMPORARY SHORING
 -FLYOVER- STA. 18+55+/-, 38'+/- LT
 TO -FLYOVER- STA. 19+30+/-, 38'+/- LT
 (SEE SHEET TMP-2A1 FOR
 TEMPORARY SHORING NOTES)

11 QUANTITY = 1025 SF
 TEMPORARY SHORING
 -FLYOVER- STA. 21+45+/-, 31.5'+/- LT
 TO -FLYOVER- STA. 22+20+/-, 28'+/- LT
 (SEE SHEET TMP-2A1 FOR
 TEMPORARY SHORING NOTES)



TYPICAL SECTION A-A
 -L- STA. 50+50 +/-

TYPICAL SECTION B-B
 -L- STA. 51+00 +/-

NOTES: SEE STRUCTURE PLANS FOR PROPOSED -FLYOVER- STRUCTURE DESIGN.
 * SEE TMP-6A FOR CUT SECTIONS AT -FLYOVER- STRUCTURE END BENTS.

**DOCUMENT NOT CONSIDERED FINAL
 UNLESS ALL SIGNATURES COMPLETED**

2/1/2016
 P:\2014\B-5121-B-5317\TrafficControl\Top\Current TMP Files\LANE'S CURRENT\B5121L5317_TC_TMP_Wade_psh6.dgn
 User:skennedy

WETHERILL ENGINEERING
 TRANSPORTATION PLANNING/DESIGN - BRIDGE/STRUCTURE DESIGN
 CIVIL/SITE DESIGN - GIS/GPS - CONSTRUCTION OBSERVATION

1223 Jones Franklin Rd.
 Raleigh, N.C. 27606
 License No. F-0377
 Bus: 919 851 8077
 Fax: 919 851 8107

APPROVED: _____ DATE: _____

SEAL

DIVISION OF HIGHWAYS
 STATE OF NORTH CAROLINA
 DEPARTMENT OF TRANSPORTATION
 WORK ZONE TRAFFIC CONTROL

**AREA I - PHASE I
 TEMPORARY TRAFFIC
 CONTROL DETAIL**