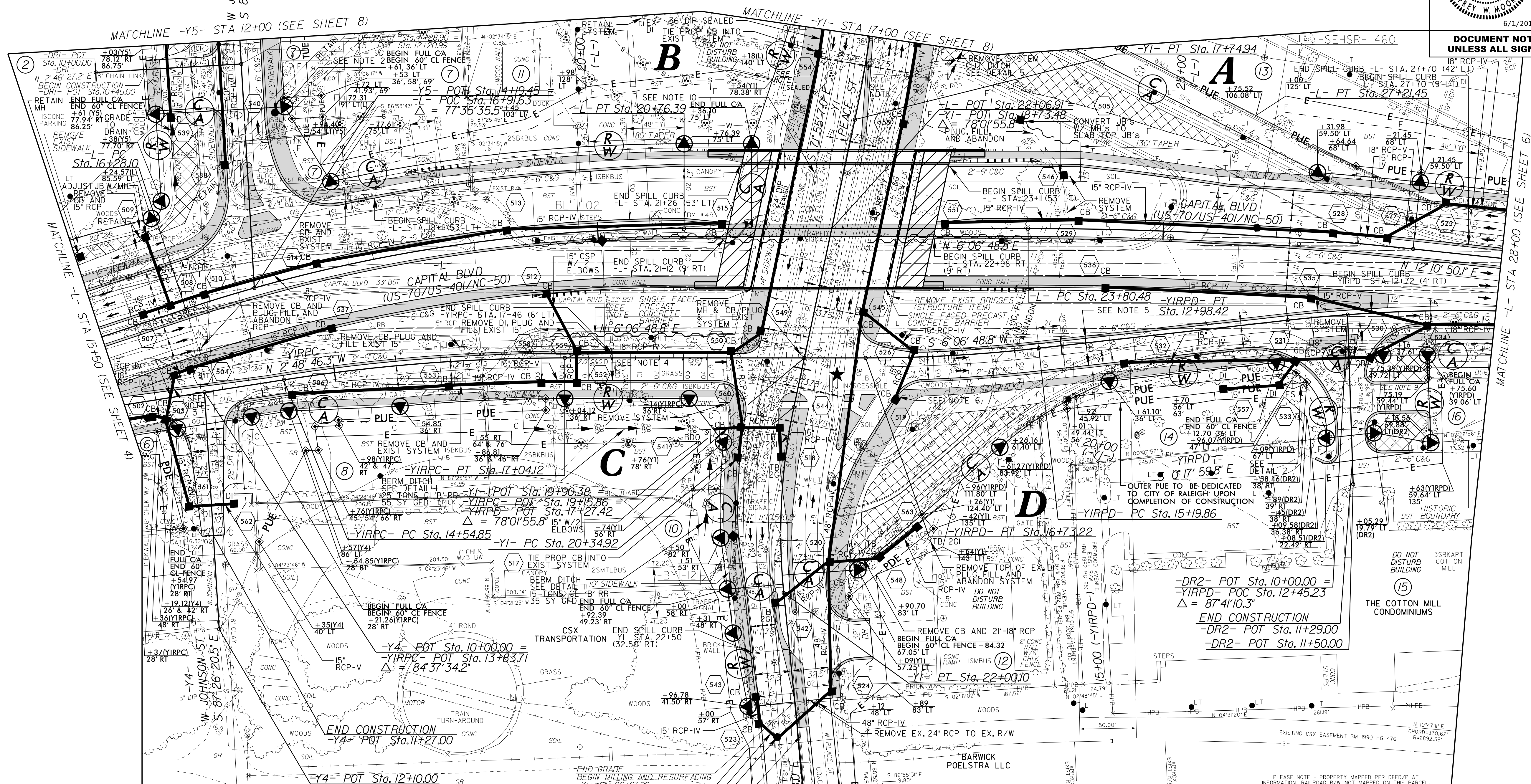


5/14/99

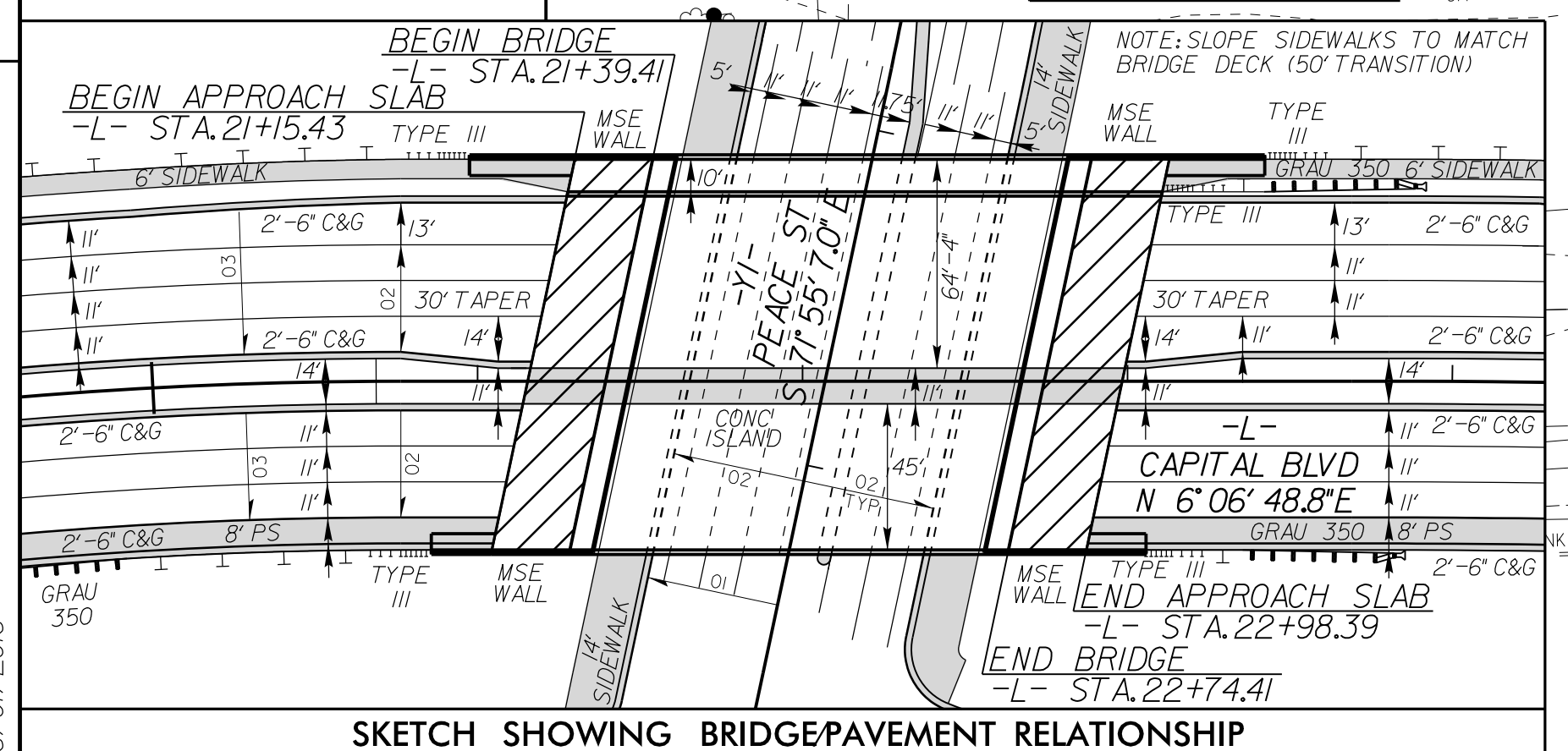
PROJECT REFERENCE NO. B-5121 / B-5317	SHEET NO. 5
RW SHEET NO.	
ROADWAY DESIGN ENGINEER	HYDRAULICS ENGINEER
6/1/2016	6/1/2016

- ② WAKE COUNTY
DB 12835 - PG 2740
BM 1960 - PG 241
- ⑧ MCC OUTDOOR LLC
DB 11239 - PG 2535
- ⑫ MCKNITT & ASSOCIATES LLC
DB 8614 - PG 460
DB 2008 - PG 180
- ⑯ 622 CAPITAL LLC
DB 14601 - DB 1647
- ⑥ ED. CHARITABLE DVLPMTS
PROJ. INC.
DB 7559 - PG 768
- ⑩ MORRIS COMMUNICATIONS
CORP
DB 3521 - PG 669
DB 13727 - PG 2236
- ⑬ CITY OF RALEIGH
DB 12531 - PG 472
BM 2007 - PG 117
BM 1959 - PG 116
- ⑭ STATE OF NORTH CAROLINA
BM 2008 - PG 180
- ⑦ ARCHIE LINWOOD KING
SUCCESSOR TRUSTEE
DB 5369 PG 541
BM 1947 PG 73
- ⑪ MARGIE MARIE FULLER
DB 10559 - PG 1762

NAD 83/NSRS 2007



REVISIONS



SKETCH SHOWING BRIDGE/PAVEMENT RELATIONSHIP

★ TRAFFIC SIGNAL

RADI DIMENSIONS ARE TO THE EDGE OF PAVEMENT UNLESS OTHERWISE NOTED

ANY PIPE OR PORTION OF PIPES THAT ARE FILLED AND LATER FOUND TO BE IN CONFLICT SHALL BE REMOVED WITH NO ADDITIONAL COMPENSATION

SEE SHEET 2B-1 FOR CURVE DATA
SEE SHEETS 2B-2 AND 2B-3 FOR INTERSECTION DETAILS
SEE SHEET 2C-6 FOR SPILL CURB DETAIL
SEE SHEET 2D-1 FOR DRAINAGE DETAILS
SEE SHEET 9 FOR -L- PROFILE
SEE SHEET 11 FOR -Y1- PROFILE
SEE SHEET 12 FOR -Y1RCP- AND -Y1RPD- PROFILES
SEE SHEET 14 FOR -Y4- AND -Y5- PROFILES
SEE SHEET 15 FOR -DRI- AND -DR2- PROFILES
SEE SHEETS S-1 THRU S-43 FOR STRUCTURE PLANS

NOTES:
1. END SPILL CURB -L- STA. 16+38 (42' LT)
2. REMOVE 65' L.F. OF EXIST 60" RCP
TIE JB W/ MH TO EXIST SYSTEM
3. BEGIN SPILL CURB -Y1RCP- STA. 13+57 (16' LT)
4. BEGIN SPILL CURB -Y1RCP- STA. 17+46 (20' RT)
5. END SPILL CURB -Y1RPD- STA. 14+78 (4' RT)
6. BEGIN SPILL CURB -Y1RPD- STA. 14+78 (20' LT)
7. END SPILL CURB -Y1RPD- STA. 14+45 (35' LT)
8. REMOVE MH, PLUG AND FILL EXISTING SYSTEMS
9. TEMPORARY SHORING (TYP)
(SEE TRANSPORTATION MANAGEMENT PLANS)
10. MATCH -DR2- PAVEMENT SECTION FOR DRIVEWAY AT -DR2- STA 10+75 (LT)
11. REMOVE DI. PLUG, FILL AND ABANDON SYSTEM
12. CONSTRUCT 3' X 5' CONCRETE SIDEWALK AT -Y1- STA. 17+50 (RT) FOR BUILDING ACCESS

6/01/2016