

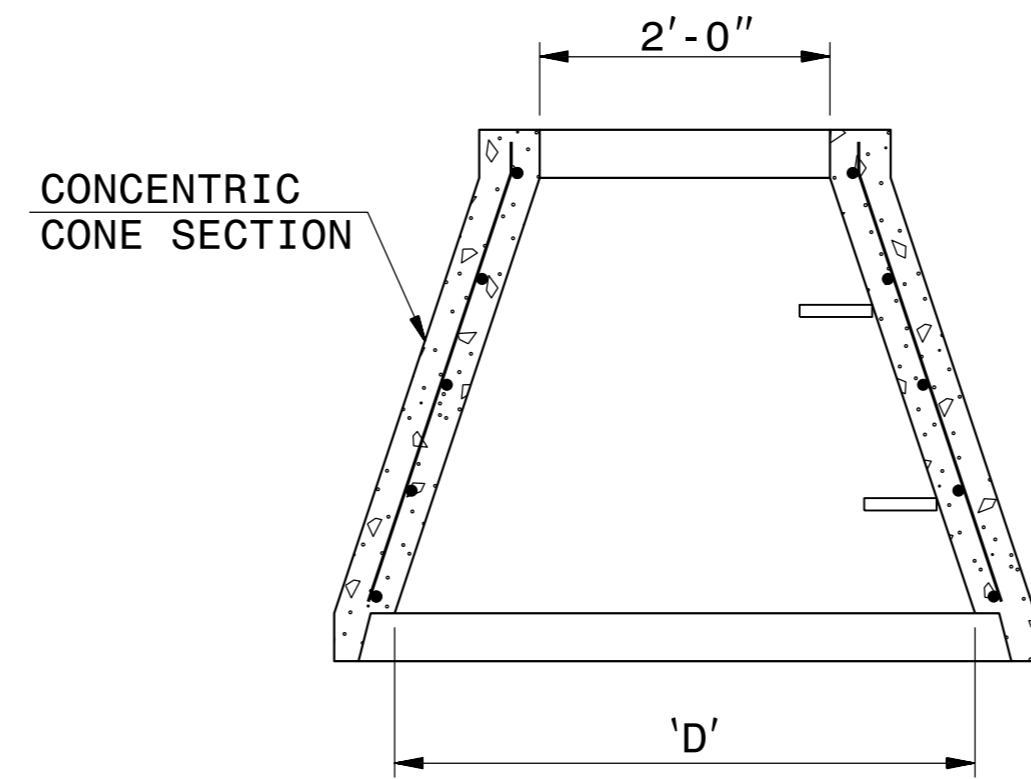
STATE OF NORTH CAROLINA
DEPT. OF TRANSPORTATION
DIVISION OF HIGHWAYS
RALEIGH, N.C.

ENGLISH DETAIL DRAWING FOR
PRECAST MANHOLE 8' AND 9' DIAMETER

SHEET 1 OF 1
840D52

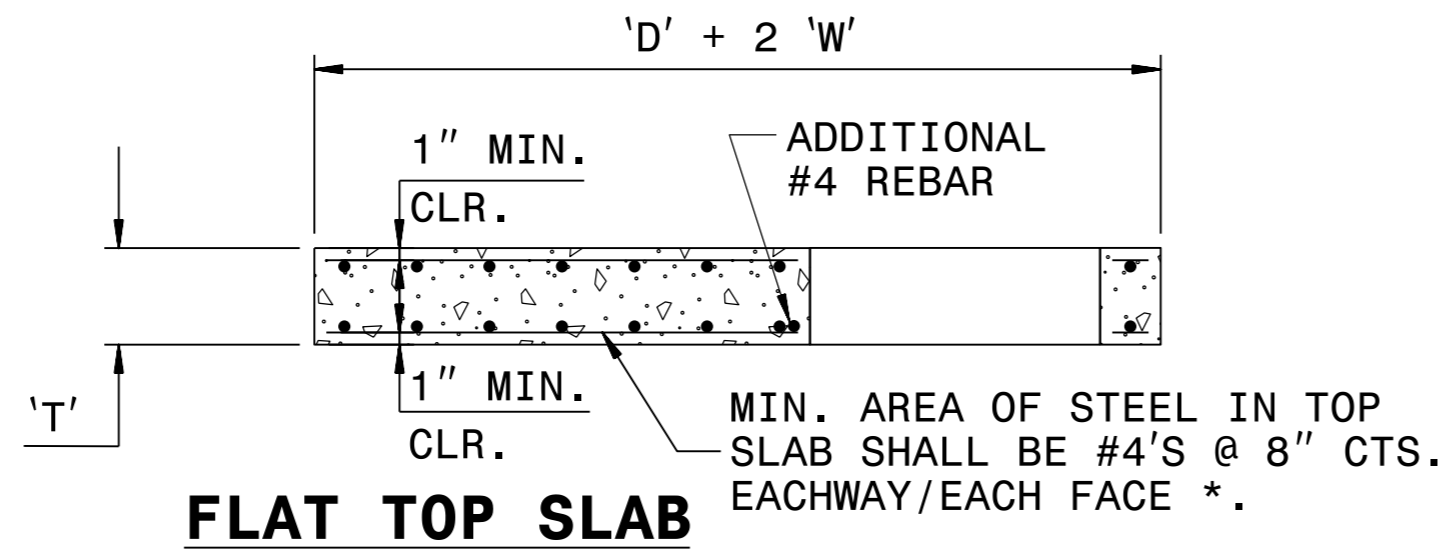
GENERAL NOTES

- USE 4000 PSI MINIMUM COMPRESSIVE STRENGTH CONCRETE.
- DESIGN, FABRICATE AND ASSEMBLE PRECAST MANHOLE COMPONENTS IN ACCORDANCE WITH AASHTO M199.
- ASSEMBLE RISER AND GRADE RINGS WITH STEPS SPACED 16" FROM THE TOP TO THE BOTTOM OF THE MANHOLE.
- WHERE THE MANHOLE IS EXPOSED TO ROAD TRAFFIC, THE TOP OF THE MANHOLE IS TO BE FLUSH WITH THE GROUND. AT OTHER LOCATIONS IT SHOULD BE A MINIMUM OF 9" ABOVE THE GROUND.
- DEPTH OF FILL LIMITED TO 30'-0" FROM FINSH GRADE TO TOP OF BOTTOM SLAB.
- THE MIN. SLAB THICKNESS 'T' SHALL BE THE DIMENSION OF THE THINNEST PORTION OF THE TOP/BOTTOM SLAB.
- * TOP MAT OF REINFORCEMENT MAY BE NEGLECTED IF TOP SLAB HAS A DISTINGUISHABLE TOP AND BOTTOM.



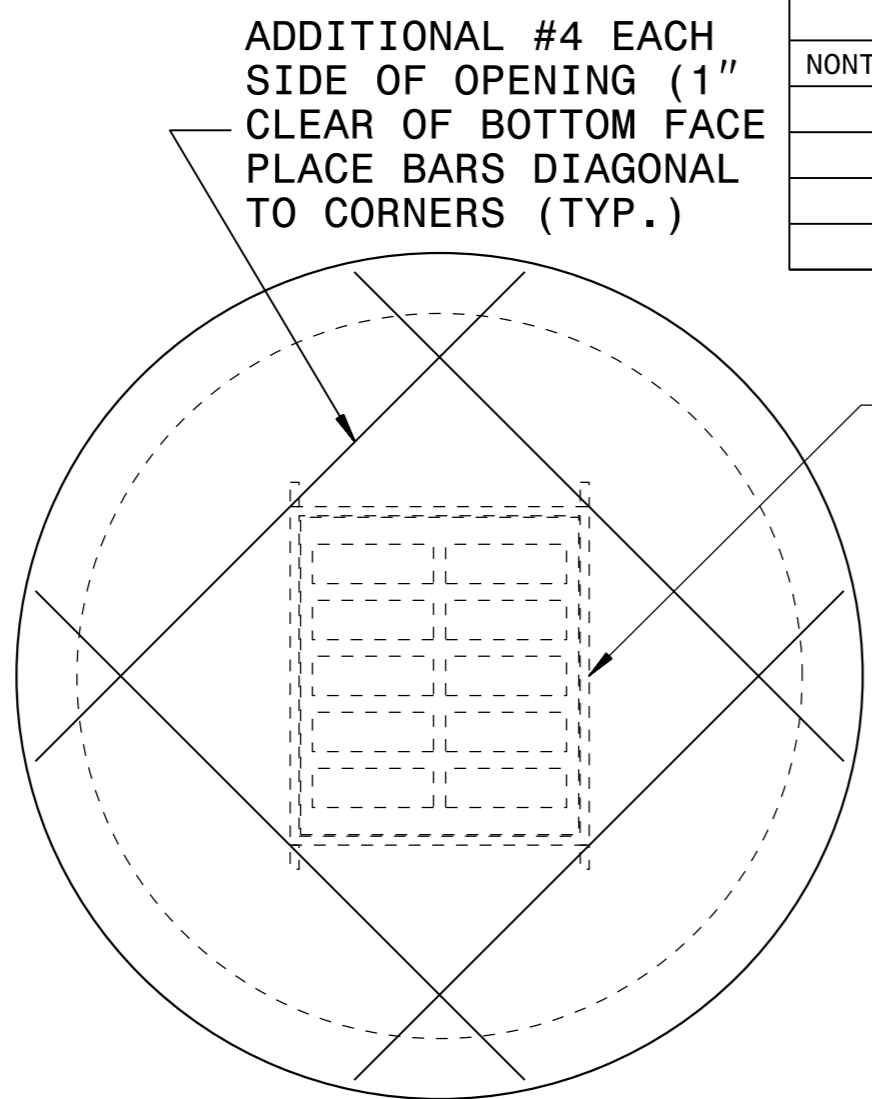
ALTERNATE CONE SECTION

D	W	T	As
INTERNAL DIAMETER (FT.)	MIN. WALL THICKNESS (IN.)	MIN. TOP/BOTTOM SLAB THICKNESS (IN.)	MIN. CIRCUMFERENTIAL AREA OF STEEL PER VERTICAL FT. (SQ. IN.)
8	8.5	8	0.24
9	9.0	9	0.27

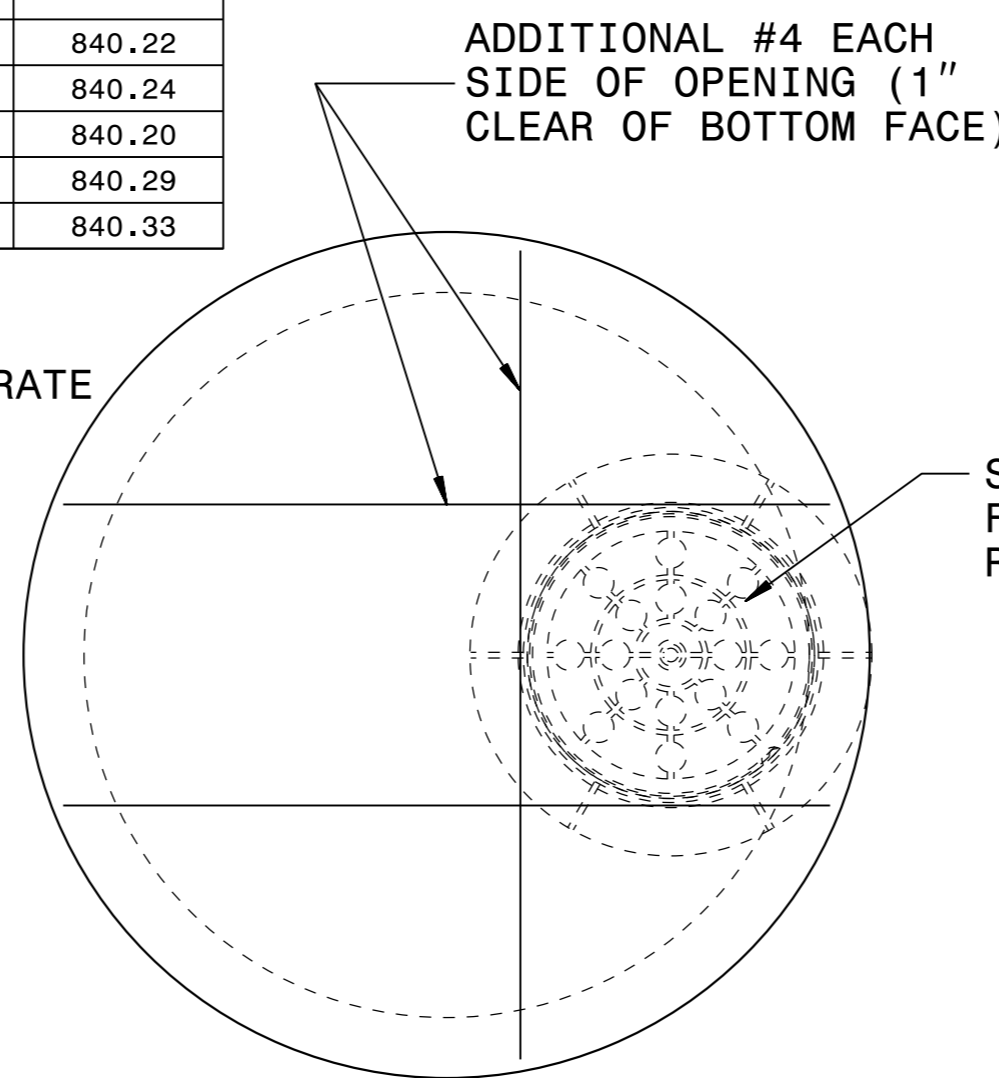


FLAT TOP SLAB

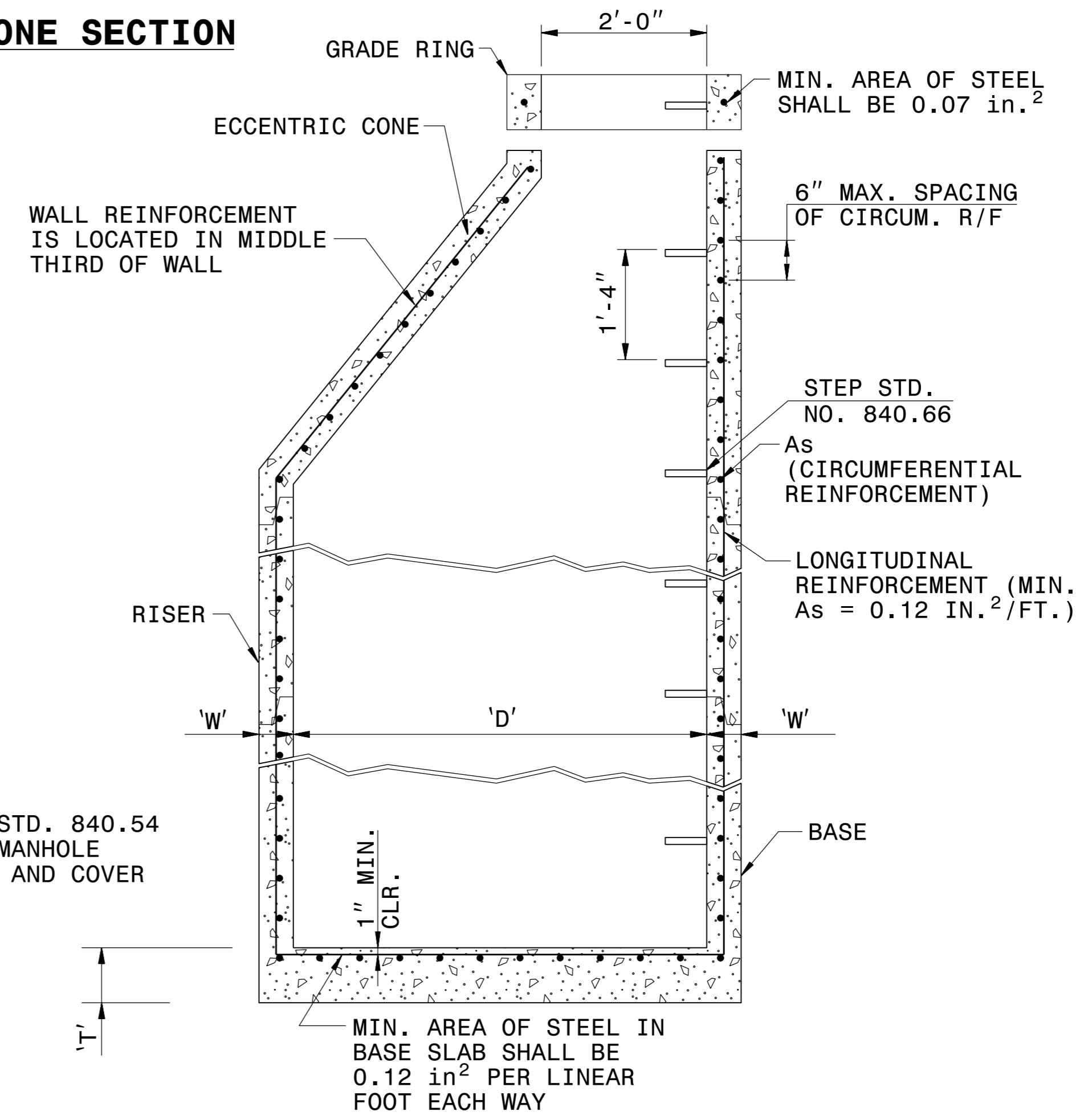
FRAME AND GRATES	STD. NO.
TRAFFIC BEARING	840.37
NONTRAFFIC BEARING:	840.22
	840.24
	840.20
	840.29
	840.33



GRATED INLET OPTION



MANHOLE OPTION



TYPICAL MANHOLE SECTION

STATE OF NORTH CAROLINA
DEPT. OF TRANSPORTATION
DIVISION OF HIGHWAYS
RALEIGH, N.C.

ENGLISH DETAIL DRAWING FOR
PRECAST MANHOLE 8' AND 9' DIAMETER

SHEET OF
840D52

DATE PLOTTED: 07/13/2016 10:58:00 AM
DRAWN BY: JEL
CHECKED BY: JEL
DATE: 07/13/2016
PROJECT: B-5121B-5317
SHEET: 2C-12

6/7/2016
Seal of a Professional Engineer, State of North Carolina, No. 022966, J. S. Howerton

DOCUMENT NOT CONSIDERED FINAL UNLESS ALL SIGNATURES COMPLETED

CONTRACT STANDARDS AND DEVELOPMENT UNIT
Office 919-707-6950 FAX 919-250-4119

SEE PLATE FOR TITLE

ORIGINAL BY: T.S.Spell DATE: 7-17-00
 MODIFIED BY: DATE:
 CHECKED BY: DATE:
 FILE SPEC.: ds174:usr/details/stand/840d52_8&9.dgn