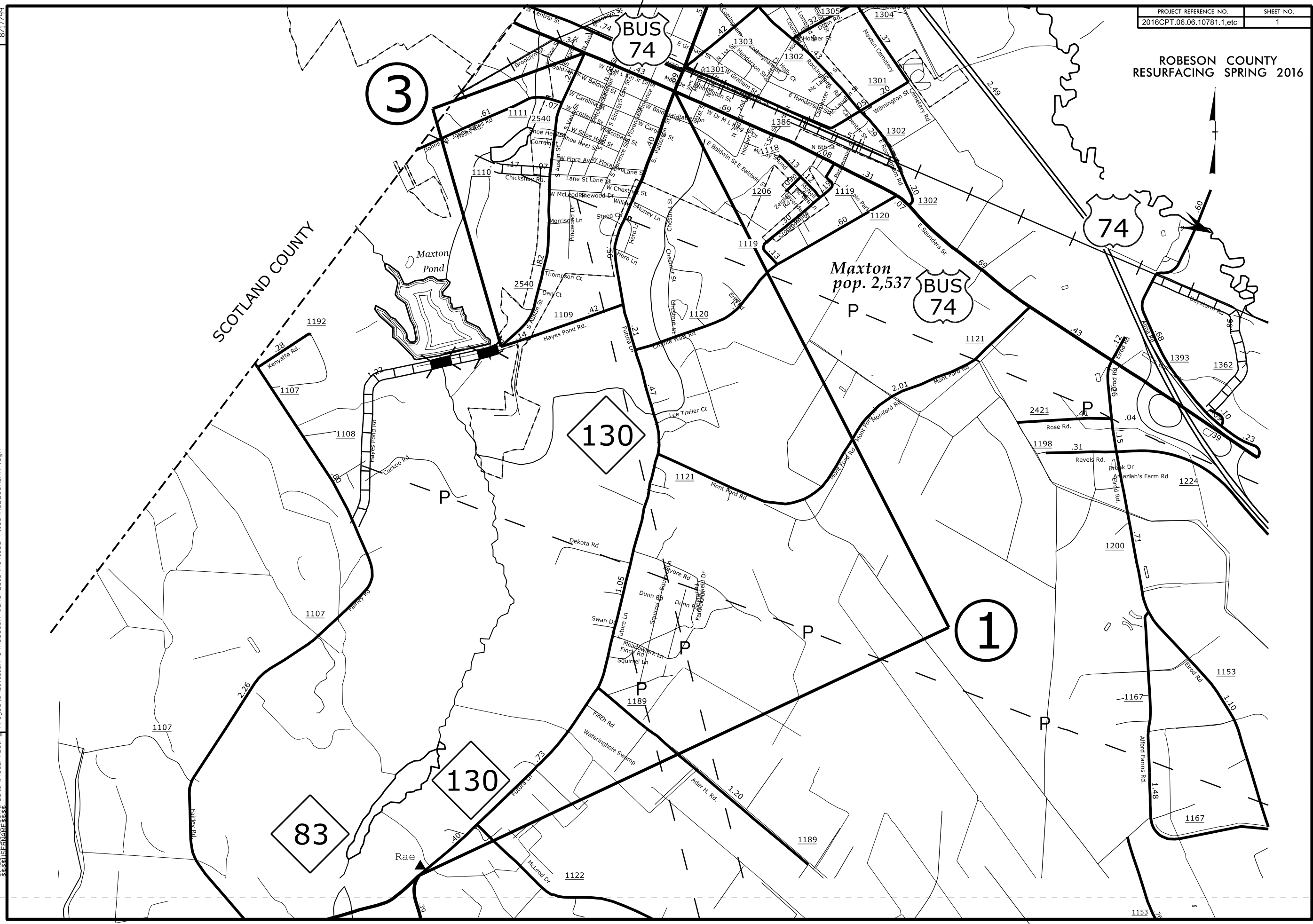


**This electronic collection of documents is provided
for the convenience of the user
and is Not a Certified Document –**

**The documents contained herein were originally issued
and sealed by the individuals whose names and license
numbers appear on each page, on the dates appearing
with their signature on that page.**

**This file or an individual page
shall not be considered a certified document.**

ROBESON COUNTY
RESURFACING SPRING 2016

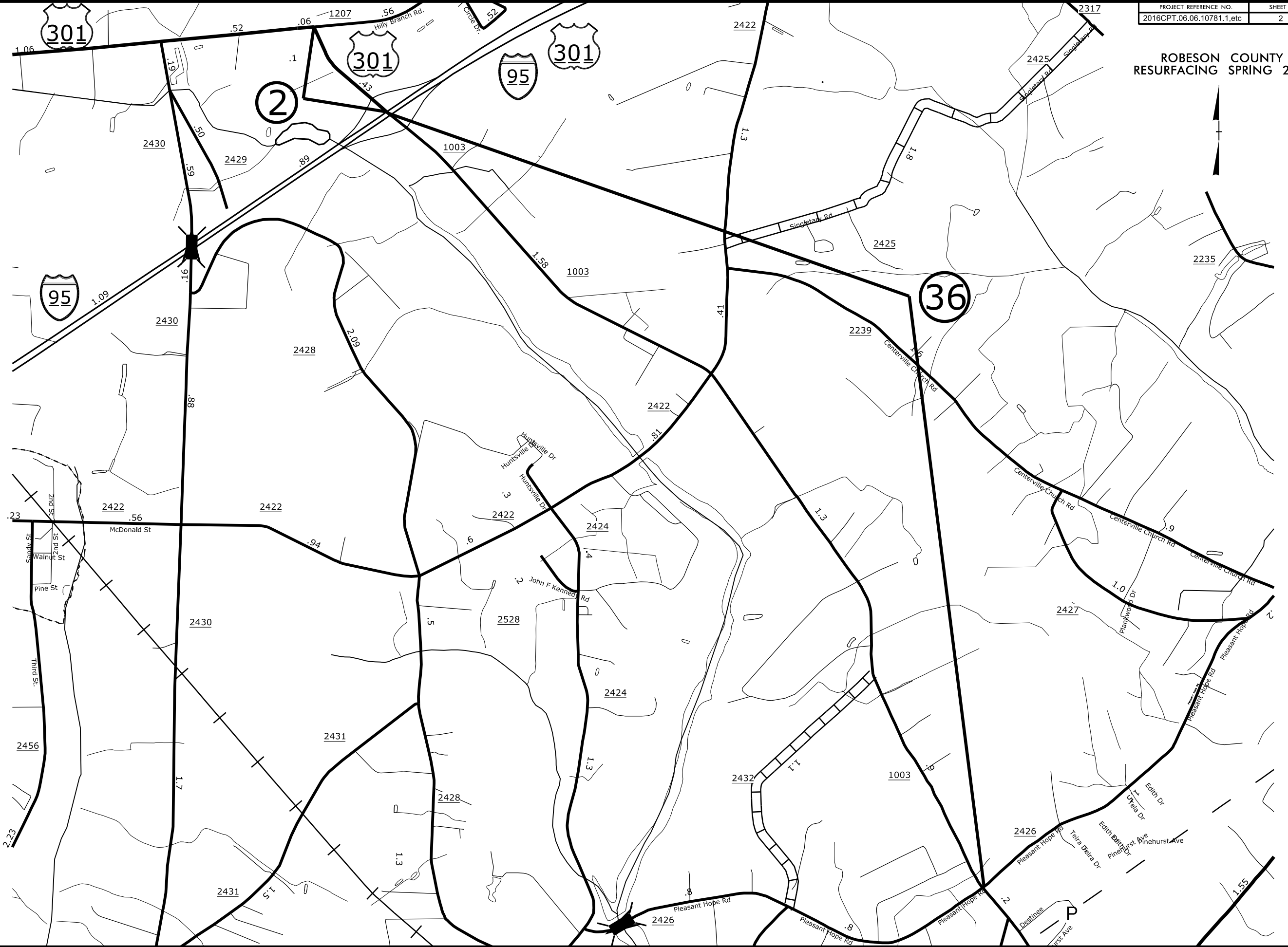


REVISIONS

26 APR 2016 10:46
 Projects\Division 6\Robeson June 2016\Revised Files\ROBESON_MAP.dgn
 8/17/99

PROJECT REFERENCE NO. 2016CPT.06.06.10781.1.etc	SHEET NO. 2
--	----------------

**ROBESON COUNTY
RESURFACING SPRING 2016**

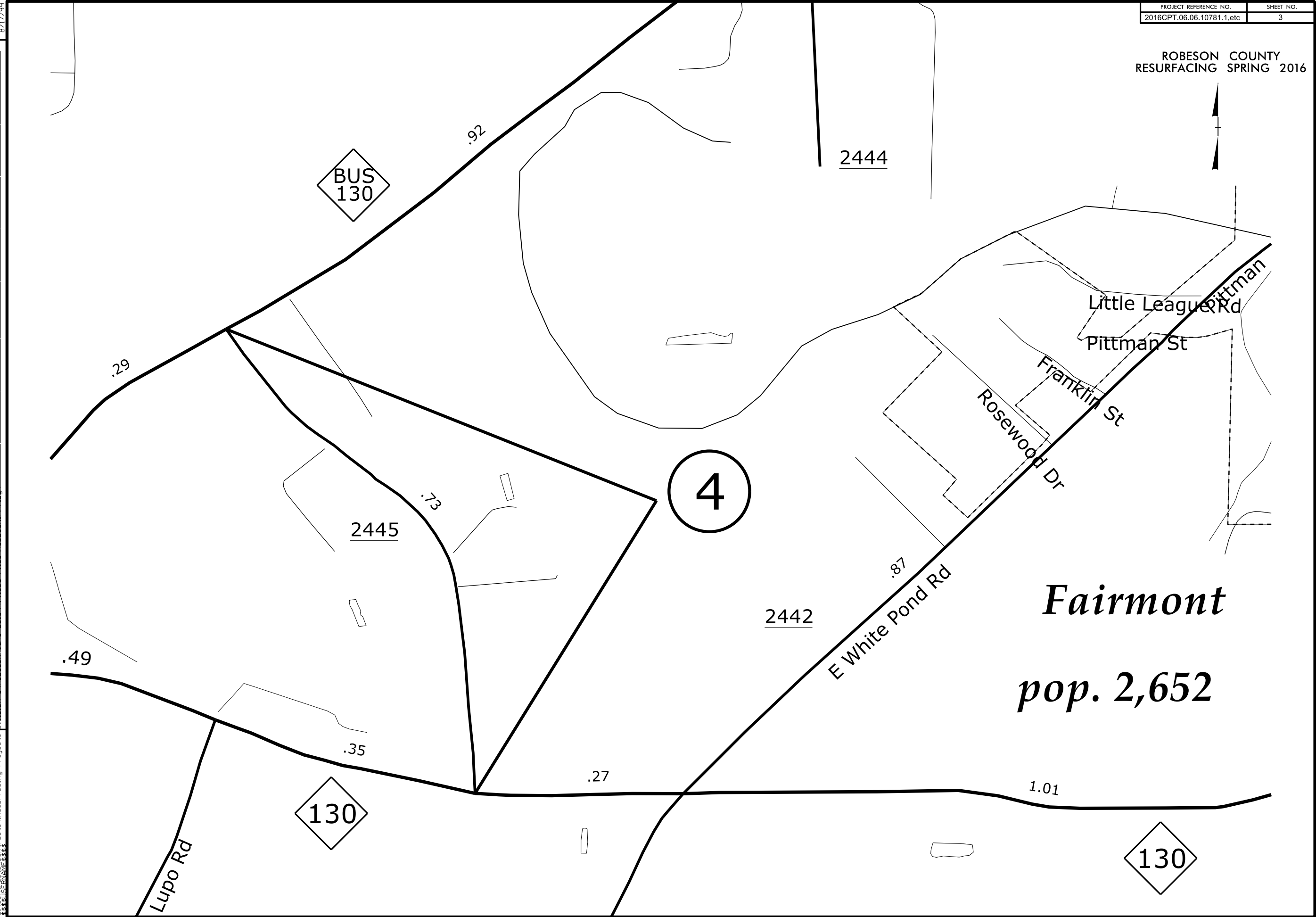


8/17/99

REVISIONS

18-APR-2016 07:47
S:\Projects\Resurfacing Projects\Division 6\Robeson June 2016\Revised Files\ROBESON MAP.dgn

ROBESON COUNTY
RESURFACING SPRING 2016



Fairmont
pop. 2,652

REVISIONS

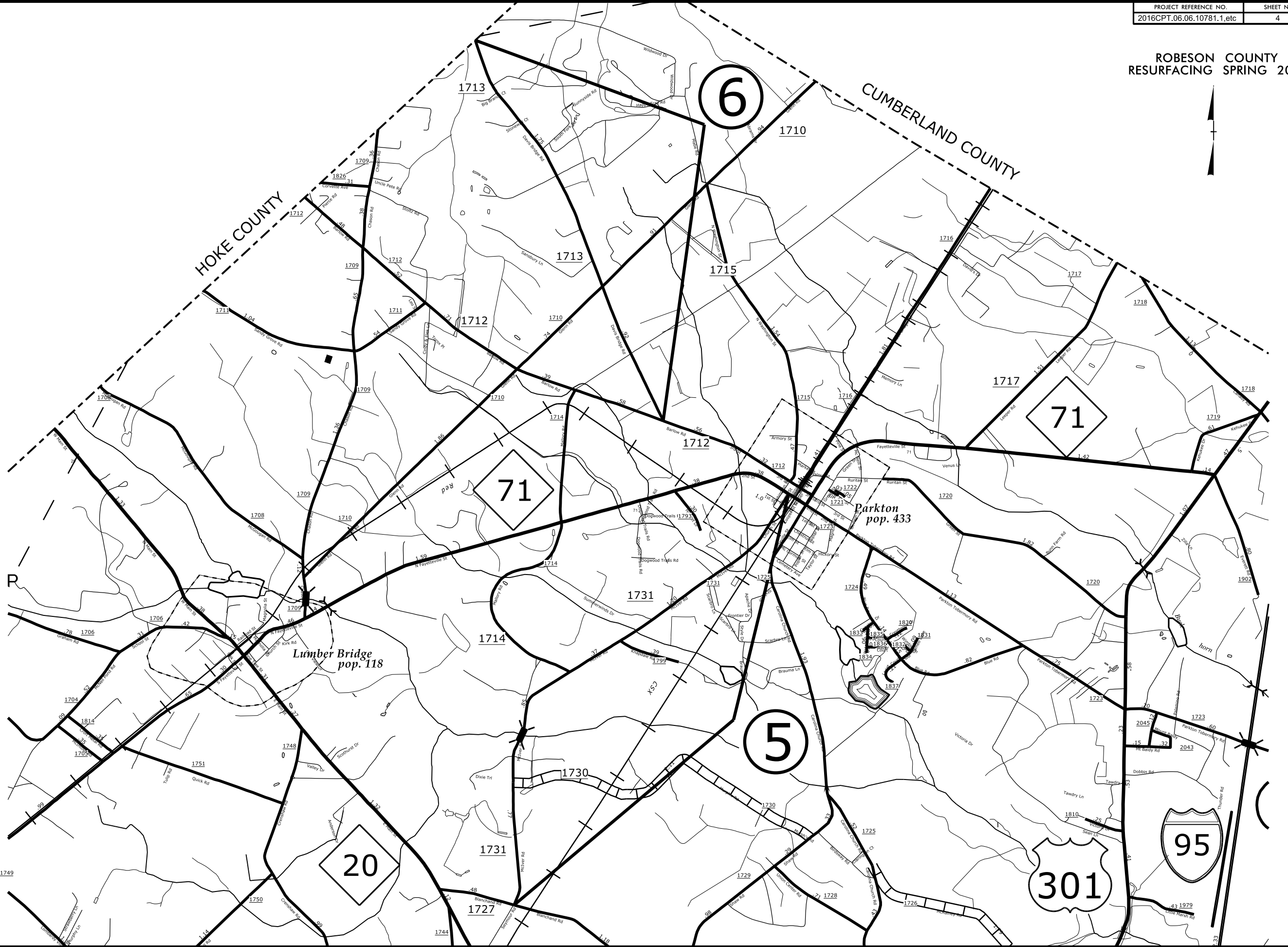
8-APR-2016 07:48
33301567010781.1.dwg
C:\Users\james\Documents\Projects\Resurfacing Projects\Division 6\Robeson June 2016\Revised Files\ROBESON MAP.dgn
8/17/99

**ROBESON COUNTY
RESURFACING SPRING 2016**



HOKE COUNTY

CUMBERLAND COUNTY



Parkton
pop. 433

Lumber Bridge
pop. 118

REVISIONS

NO.	DATE	DESCRIPTION

8/17/99

I8-APR-2016 07:48
 C:\Users\jlm345\Desktop\Projects\Robeson June 2016 Revised Files\ROBESON_MAP.dgn
 353830251.DWG
 353830251.DWG

95

301

6

71

71

5

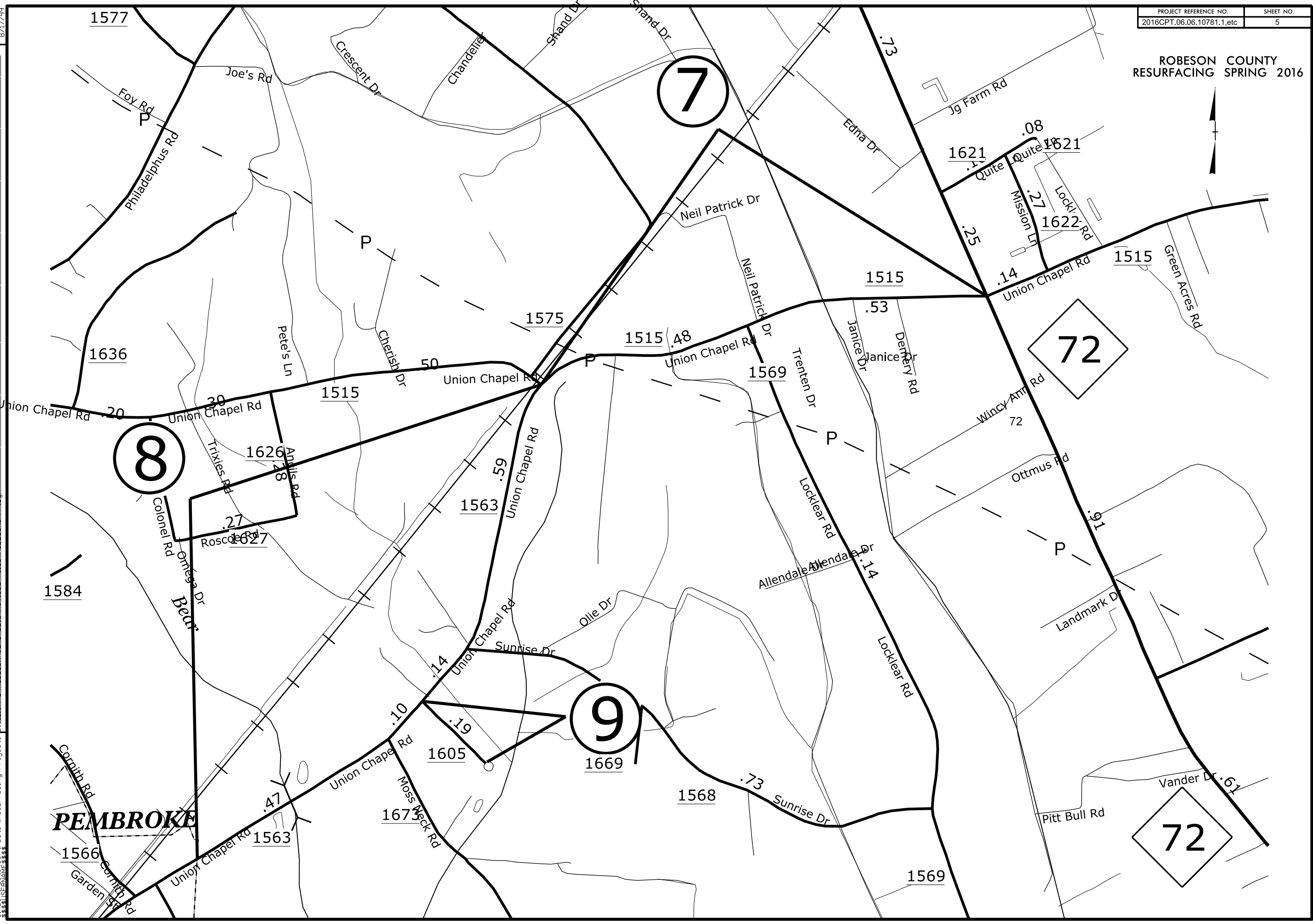
20

ROBESON COUNTY
RESURFACING SPRING 2016

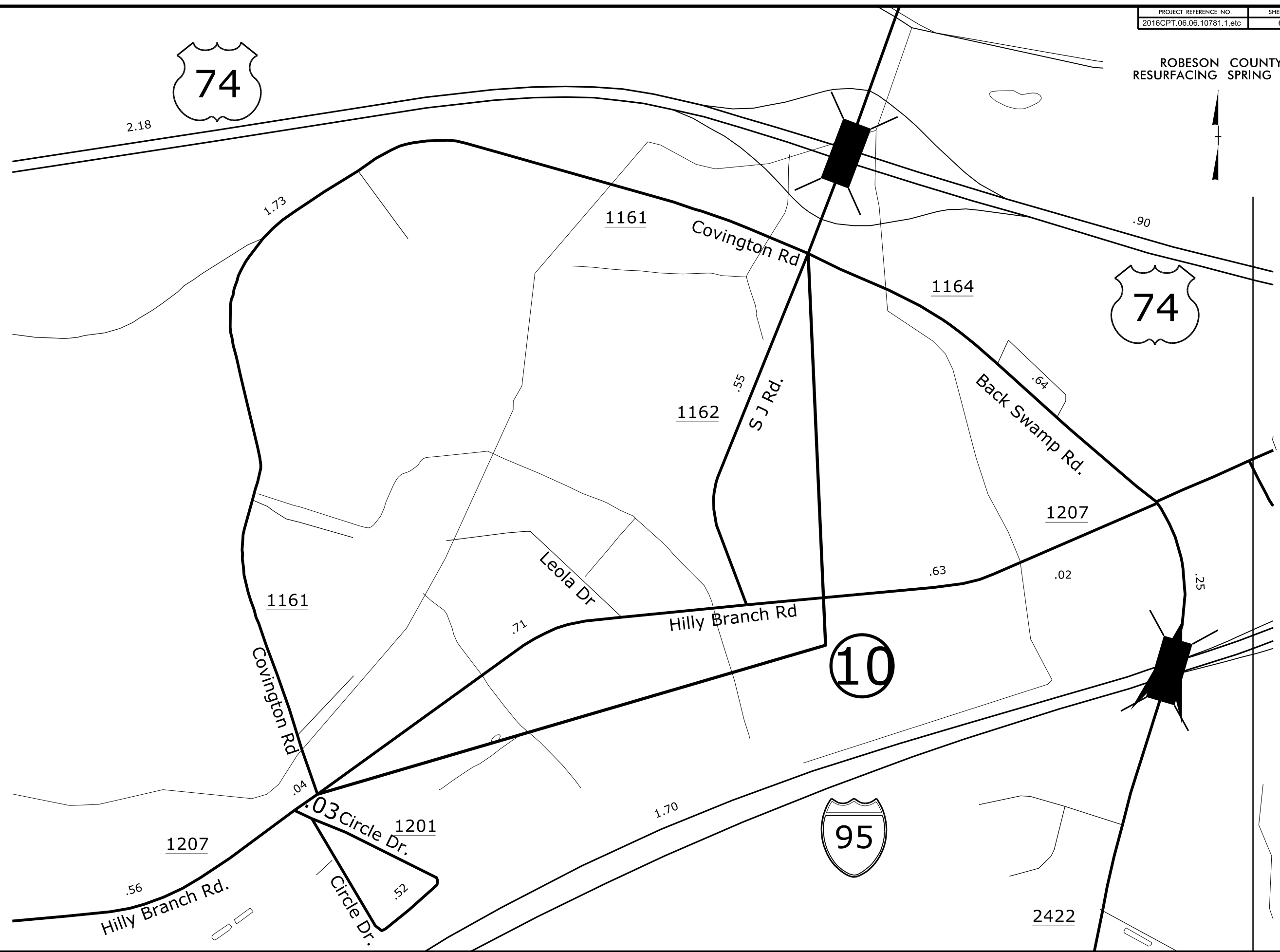


REVISIONS

8/17/99
18-APR-2016 07:49
C:\Users\jgibson\Documents\Projects\Resurfacing Projects\Division 6\Robeson_June_2016\Revised_Files\ROBESON_MAP.dwg



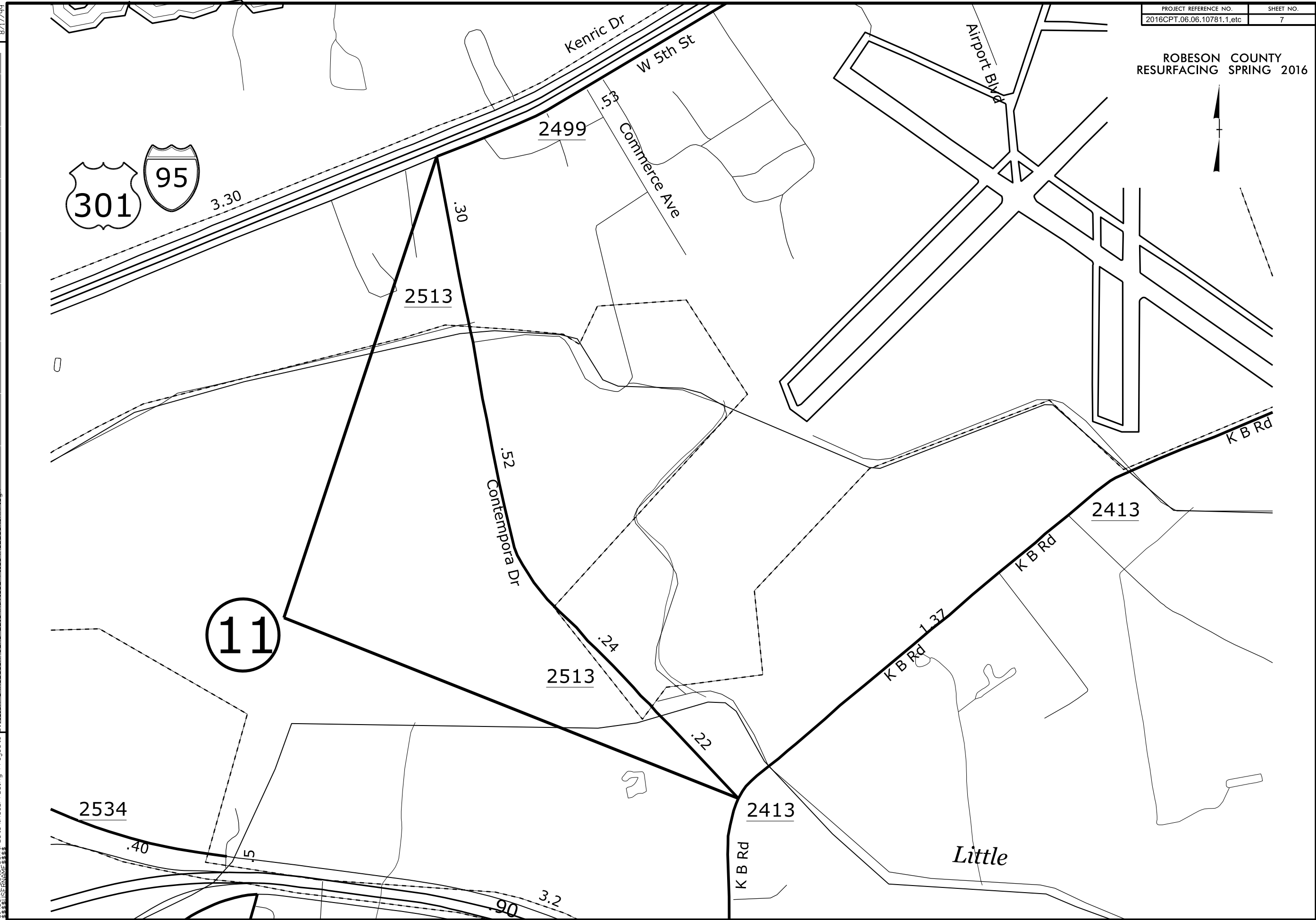
ROBESON COUNTY
RESURFACING SPRING 2016



REVISIONS

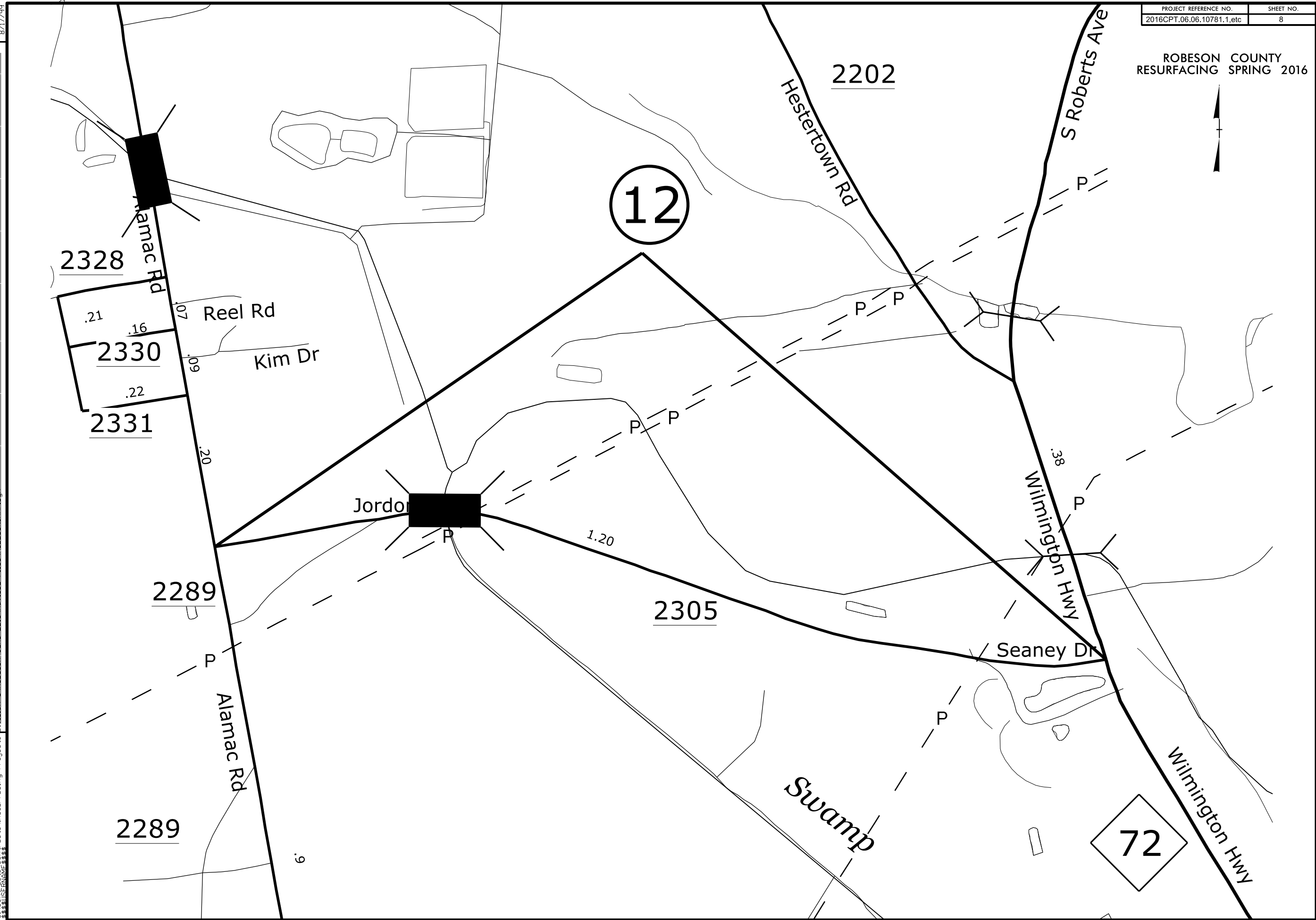
8-APR-2016 07:49
 I:\Projects\Resurfacing Projects\Division 6\Robeson June 2016\Revised Files\ROBESON MAP.dgn
 20160408 10:53
 8/17/99

ROBESON COUNTY
RESURFACING SPRING 2016



8-APR-2016 07:50
 S:\Projects\Resurfacing Projects\Division 6\Robeson June 2016\Revised Files\ROBESON MAP.dgn
 8/17/99

REVISIONS



REVISIONS

NO.	DATE	DESCRIPTION

18-APR-2016 07:50
C:\Users\james\Documents\Projects\Resurfacing\Projects\Robeson\Division_6\Robeson_June_2016\Revised_Files\ROBESON_MAP.dgn
8/17/99

ROBESON COUNTY
RESURFACING SPRING 2016



Powell

1529

1.00

West Powersville Rd

Lakeside Dr

Wycliff Dr



32

31

14

17

15

13

30

16

29

23

28

26

22

25

24

2036

2038

2037

2035

2036

2009

2011

2010

1948

1005

1989

1990

1989

1983

2014

2028

1983

1989

2014

1983

1945

1947

2012

1.32

2036

2038

2037

2035

2036

2009

2011

2010

1948

1005

1989

1990

1989

1983

2014

2028

1983

1989

2014

1983

1945

1947

2012

1.32

2036

2038

2037

2035

2036

2009

2011

2010

1948

1005

1989

1990

1989

1983

2014

2028

1983

1989

2014

1983

1945

1947

2012

1.32

2036

2038

2037

2035

2036

2009

2011

2010

1948

1005

1989

1990

1989

1983

2014

2028

1983

1989

2014

1983

1945

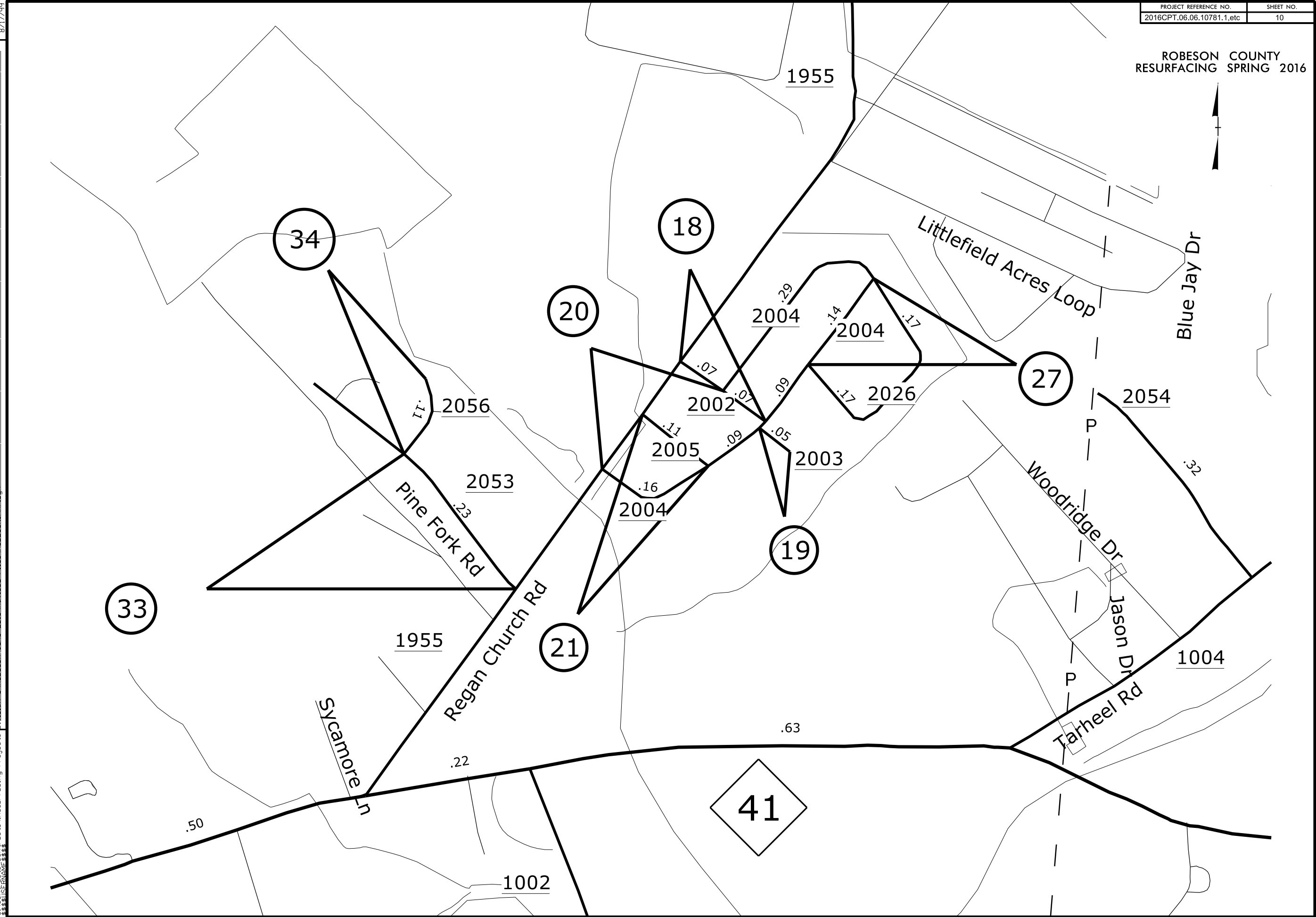
1947

2012

REVISIONS

8-APR-2016 07:51 I:\Projects\Resurfacing Projects\Division 6\Robeson\June_2016\Revised_Files\ROBESON_MAP.dwg

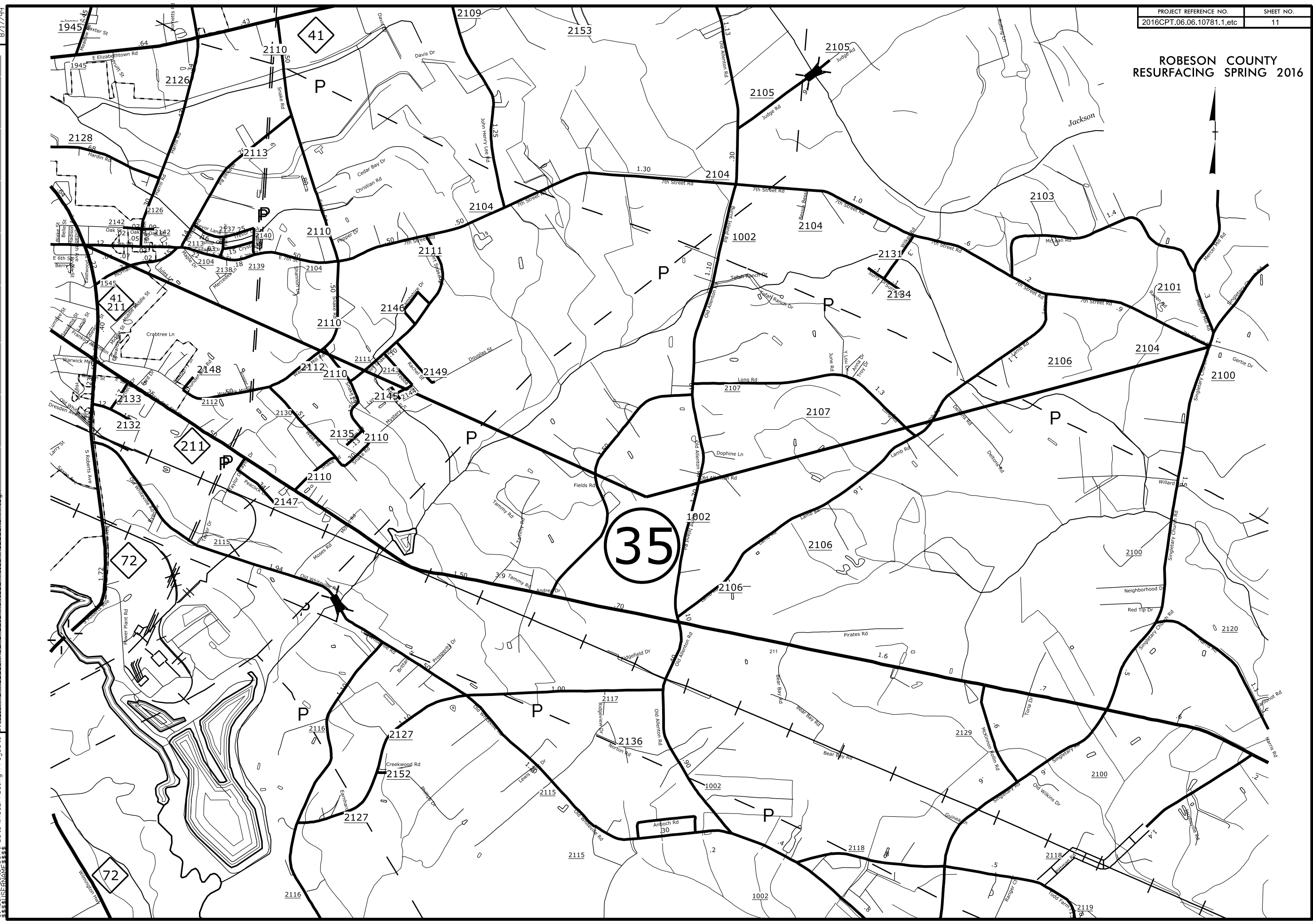
ROBESON COUNTY
RESURFACING SPRING 2016



REVISIONS

8-APR-2016 07:51 Projects\Resurfacing Projects\Division 6\Robeson June 2016\Revised Files\ROBESON MAP.dgn
8/17/99

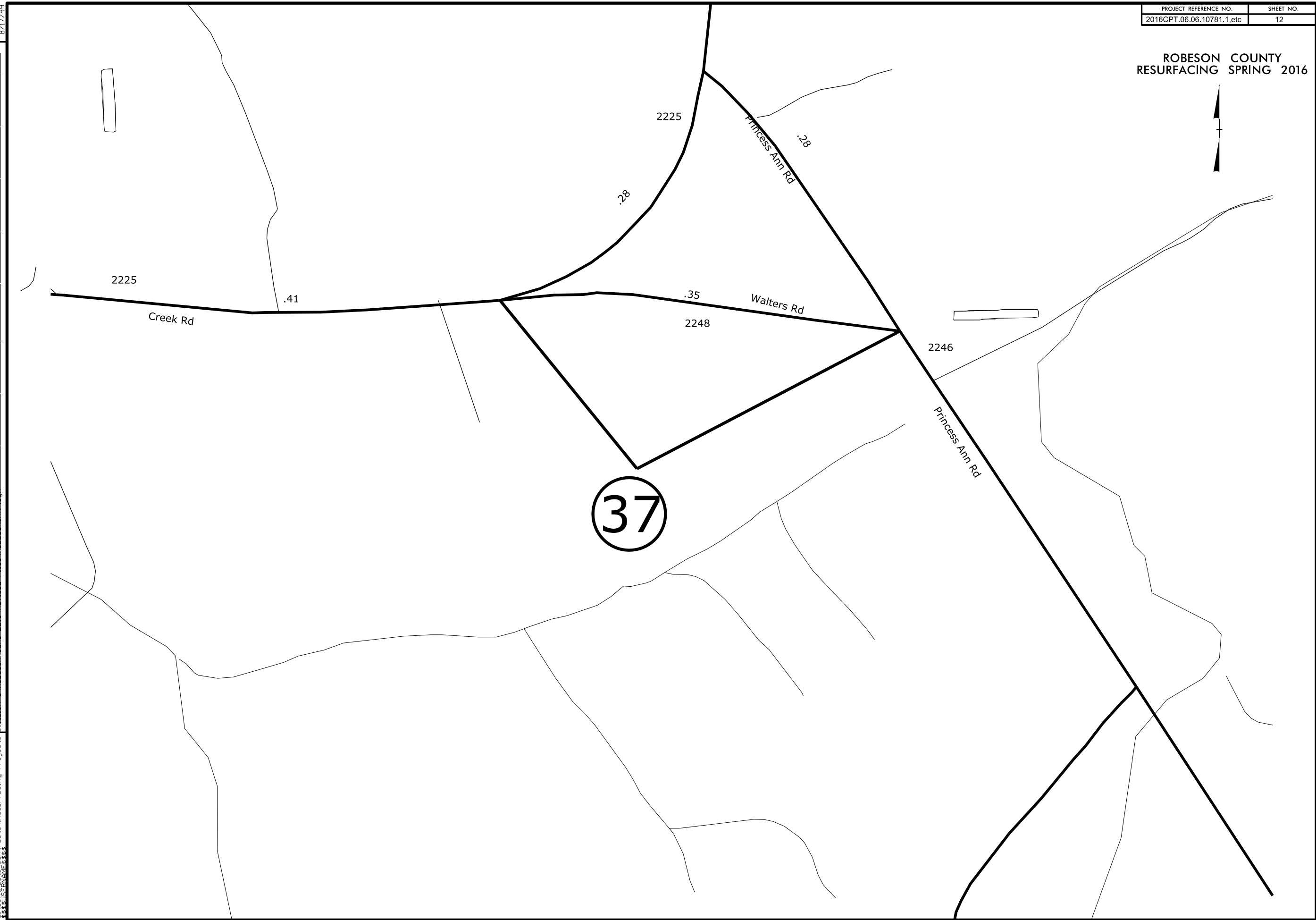
ROBESON COUNTY
RESURFACING SPRING 2016



NO.	DESCRIPTION
1	REVISIONS

8-APR-2016 07:52
 C:\Users\jwheeler\Documents\Projects\Robeson\Map\Map.dwg
 8/17/99

ROBESON COUNTY
RESURFACING SPRING 2016



REVISIONS

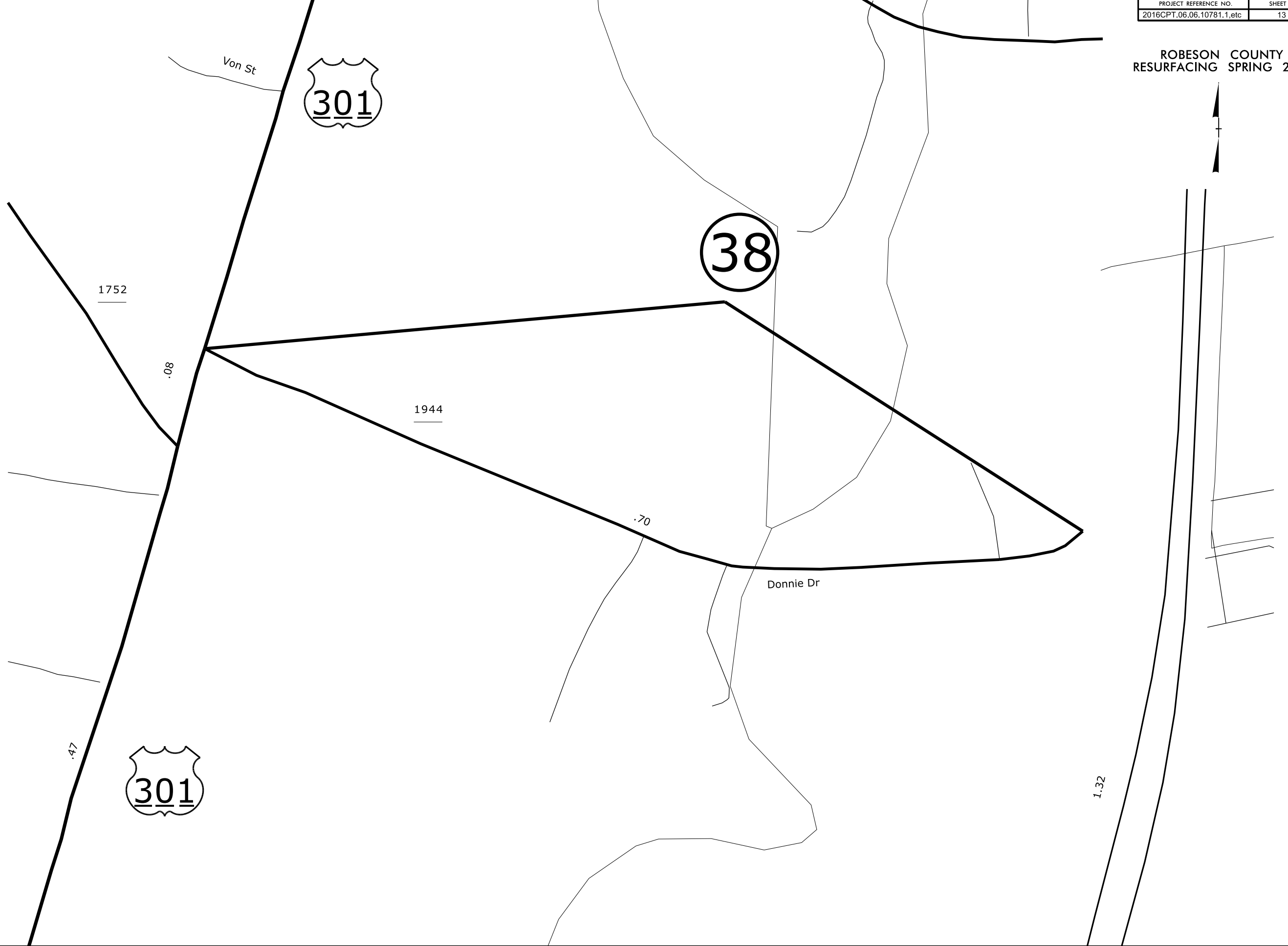
8-APR-2016 07:52
C:\Users\jmc\Documents\Projects\Resurfacing Projects\Division_6\Robeson_June_2016\Revised_Files\ROBESON_MAP.dgn
8/17/99

ROBESON COUNTY
RESURFACING SPRING 2016

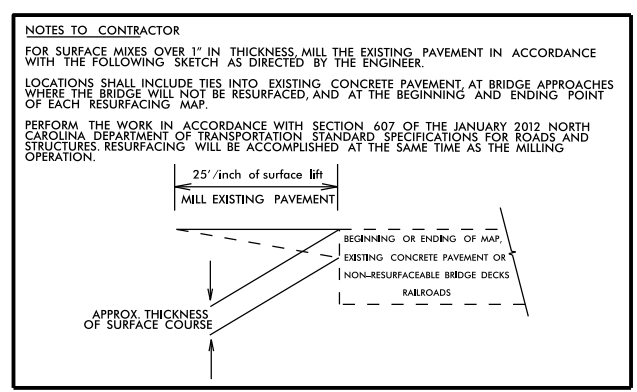
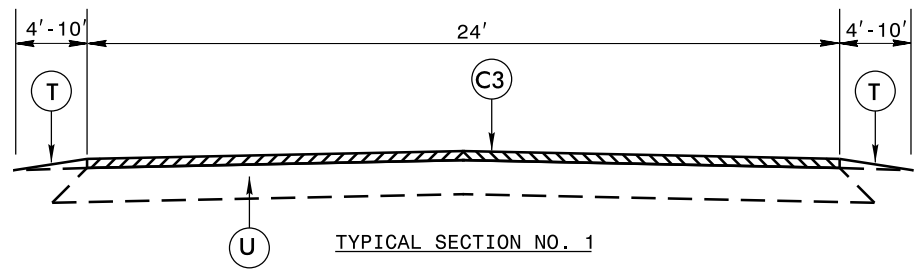


8-APR-2016 07:53
 C:\Users\jgibson\Documents\Projects\Resurfacing\Projects\Division 6\Robeson\June 2016\Revised Files\ROBESON MAP.dgn
 8/17/99

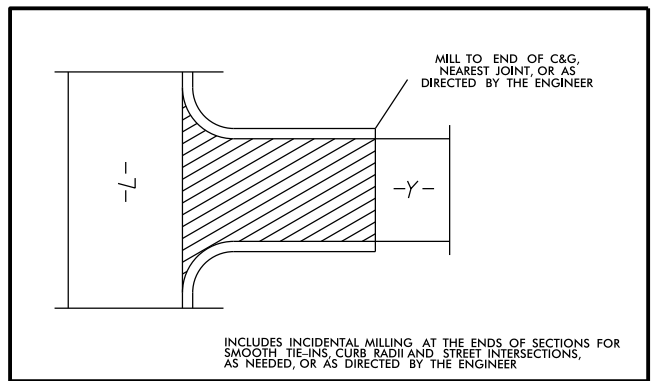
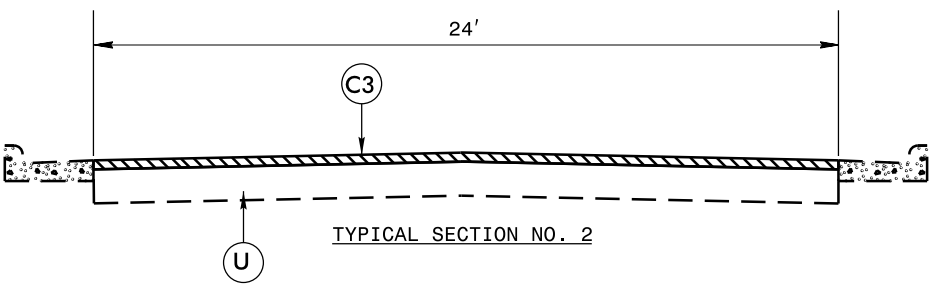
REVISIONS



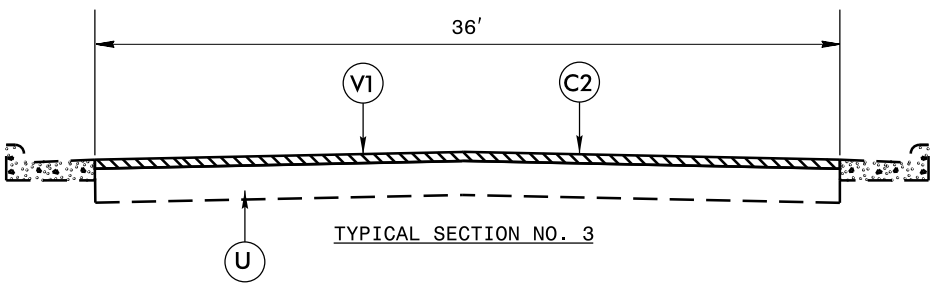
PAVEMENT SCHEDULE	
C1	PROP. APPROX. 3/4" ASPHALT CONCRETE SURFACE COURSE, TYPE S4.75A, AT AN AVERAGE RATE OF 75 LBS. PER SQ. YD.
C2	PROP. APPROX. 1 1/2" ASPHALT CONCRETE SURFACE COURSE, TYPE SF9.5A, AT AN AVERAGE RATE OF 165 LBS. PER SQ. YD.
C3	PROP. APPROX. 1 1/2" ASPHALT CONCRETE SURFACE COURSE, TYPE S9.5B, AT AN AVERAGE RATE OF 168 LBS. PER SQ. YD.
E1	PROP. APPROX. 5 1/2" ASPHALT CONCRETE BASE COURSE, TYPE B25.0B, AT AN AVERAGE RATE OF 627 LBS. PER SQ. YD.
V1	1 1/2" MILLING
T	SHOULDER RECONSTRUCTION WITH AGGREGATE SHOULDER BORROW
U	EXISTING PAVEMENT



INCIDENTAL MILLING AT PAVEMENT TIE-INS DETAIL

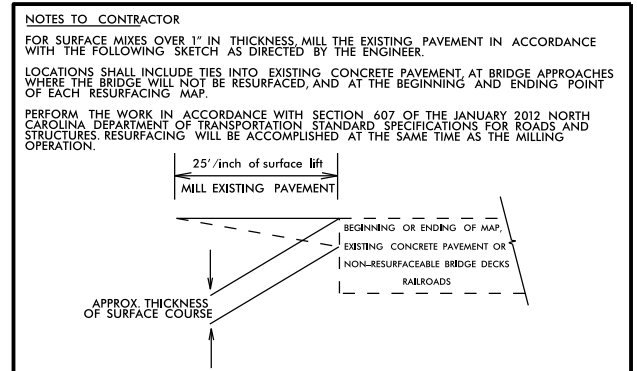
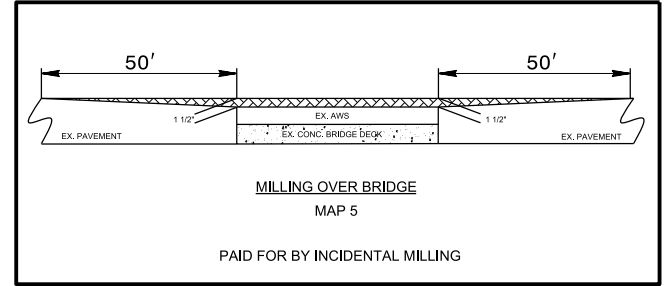
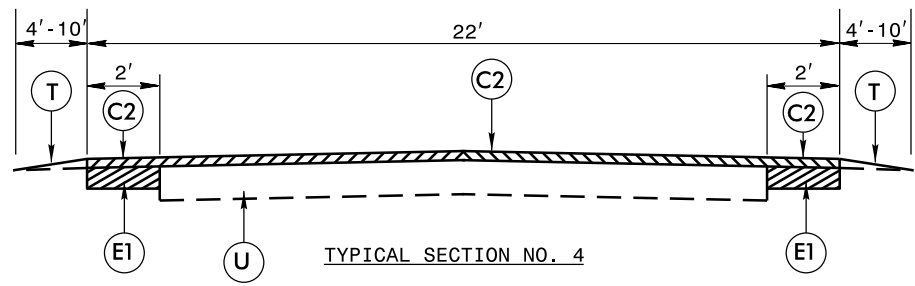


MILLING AT CURB AND GUTTER INTERSECTIONS

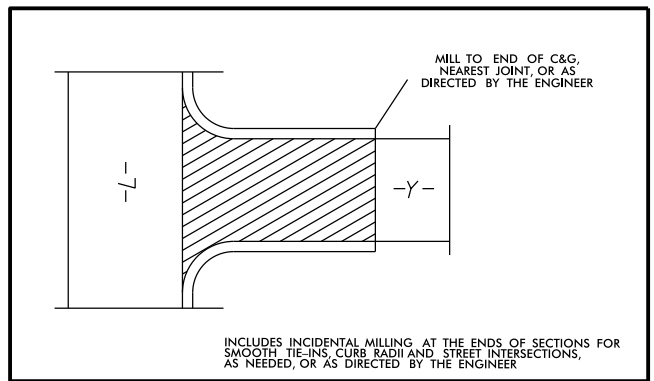
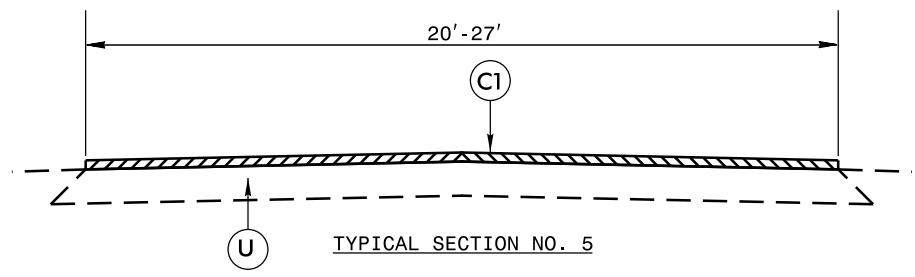


6/2/99
25-APR-2016 15:02
S:\Projects\Resurfacing Projects\Division 6\Robeson June 2016\TYP_Rdy_.twp.dgn

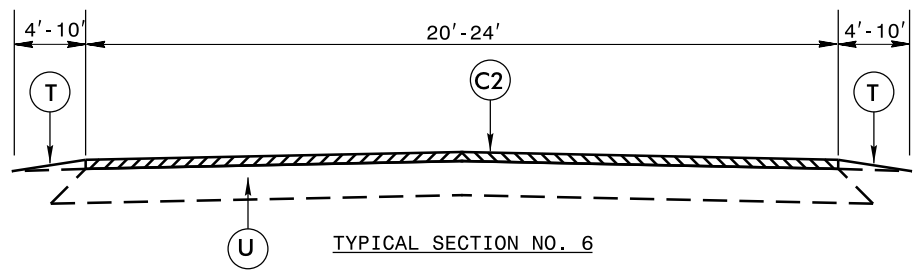
PAVEMENT SCHEDULE	
C1	PROP. APPROX. 3/4" ASPHALT CONCRETE SURFACE COURSE, TYPE S4.75A, AT AN AVERAGE RATE OF 75 LBS. PER SQ. YD.
C2	PROP. APPRX. 1 1/2" ASPHALT CONCRETE SURFACE COURSE, TYPE SF9.5A, AT AN AVERAGE RATE OF 165 LBS. PER SQ. YD.
C3	PROP. APPROX. 1 1/2" ASPHALT CONCRETE SURFACE COURSE, TYPE S9.5B, AT AN AVERAGE RATE OF 168 LBS. PER SQ. YD.
E1	PROP. APPROX. 5 1/2" ASPHALT CONCRETE BASE COURSE, TYPE B25.0B, AT AN AVERAGE RATE OF 627 LBS. PER SQ. YD.
V1	1 1/2" MILLING
T	SHOULDER RECONSTRUCTION WITH AGGREGATE SHOULDER BORROW
U	EXISTING PAVEMENT



INCIDENTAL MILLING AT PAVEMENT TIE-INS DETAIL



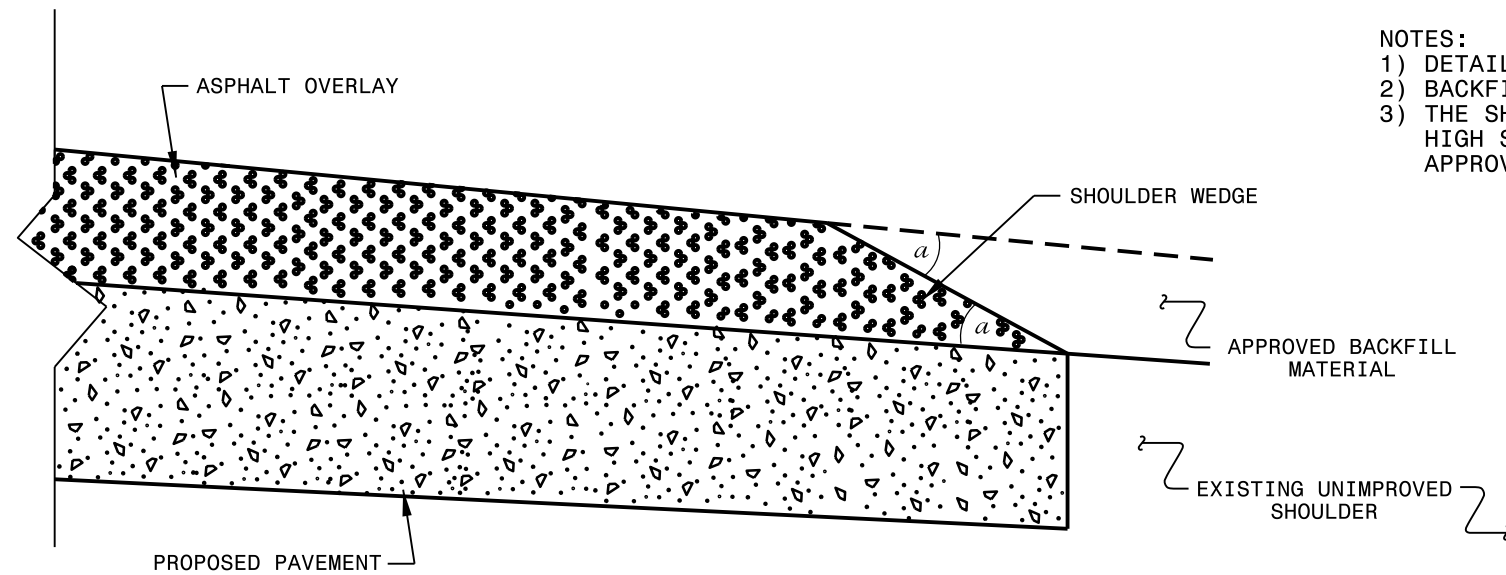
MILLING AT CURB AND GUTTER INTERSECTIONS



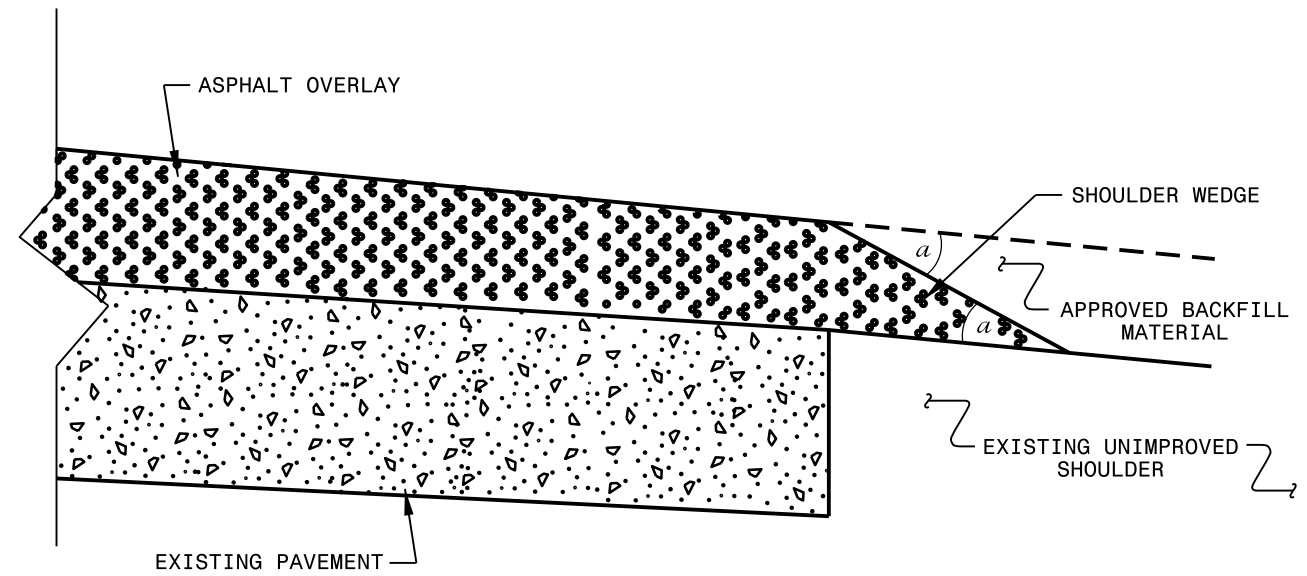
6/2/99 25-APR-2016 15:02 6:\Projects\Resurfacing Projects\Division 6\Robeson June 2016\TYP_Rdy_.typ.dgn

NOTES:

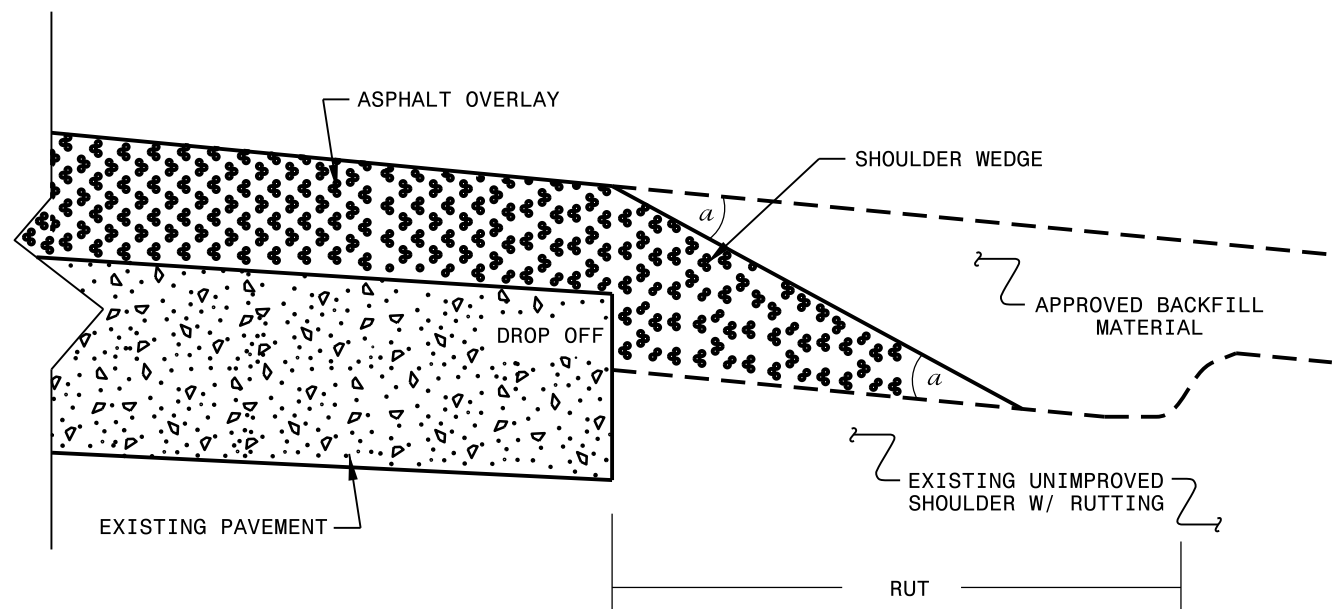
- 1) DETAIL DOES NOT APPLY TO OGAFB AND ULTRA-THIN BONDED WEARING COURSE.
- 2) BACKFILL SHOULDER WITH APPROVED MATERIAL.
- 3) THE SHOULDER WEDGE DEVICE MAY BE DISENGAGED AT PAVED DRIVEWAYS, SIDE STREETS, HIGH SHOULDERS, AND OTHER LOCATIONS NOT FEASIBLE TO CONSTRUCT AS APPROVED BY THE ENGINEER.



SHOULDER WEDGE DETAIL
(Resurfacing Projects w/ Widening or
with Existing Paved Shoulder having no dropoffs)



SHOULDER WEDGE DETAIL
(Resurfacing Projects w/ NO Widening)



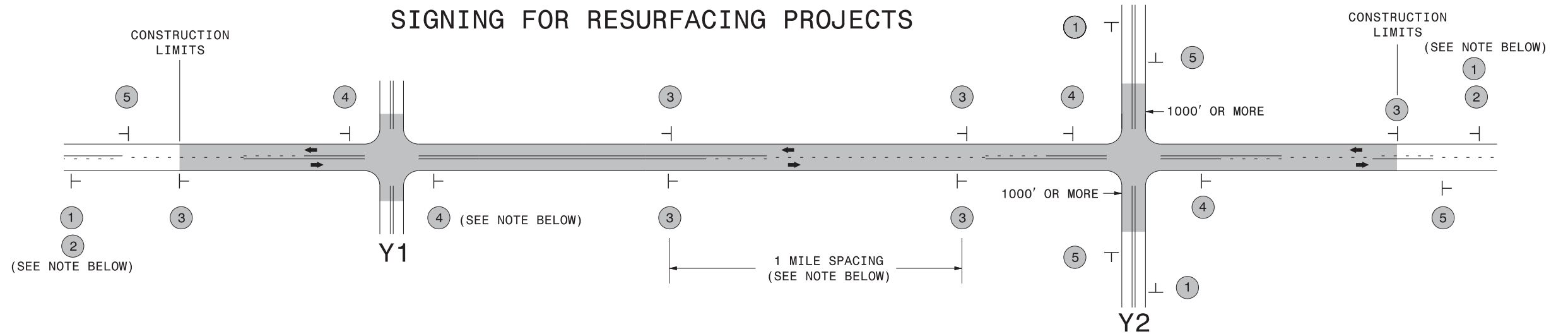
SHOULDER WEDGE DETAIL
(Resurfacing Adjacent to
Rutted Shoulder)

- SHOULDER WEDGE ANGLE = 30°

CONTRACT STANDARDS AND DEVELOPMENT UNIT	
Office 919-707-6950	FAX 919-250-4119
SHOULDER WEDGE DETAILS	
ORIGINAL BY: T.SPELL	DATE: 7-19-11
MODIFIED BY:	DATE: 2/2/16
CHECKED BY:	DATE:
FILE SPEC.: susr/details/stand/shoulderwedgedetail.dgn	

I:\APR-2016_07.57
 S:\Contracts\Resurfacing Projects\Shoulder Wedge Details\Revised Shoulder Wedge Detail.dgn
 \$\$\$USERNAME\$\$\$

SIGNING FOR RESURFACING PROJECTS



LEGEND	
	STATIONARY SIGN
←	DIRECTION OF TRAFFIC FLOW

MAINLINE (-L-) SIGNING

-Y- LINE SIGNING

SIGNING NOTES AND PLACEMENT PER DIRECTION	1	 <small>W20-1 48" X 48"</small>	PLACE 1000' PRIOR TO BEGINNING OF CONSTRUCTION LIMITS. ONLY USED ON -Y- LINES IF RESURFACING LIMITS EXTEND 1000' ALONG -Y- LINE.		
	2	 <small>W7-3aP 24" X 18"</small>	#2 SIGN ONLY USED WHEN RESURFACING LIMITS ARE 2 OR MORE MILES IN LENGTH. ROUND UP TO NEXT WHOLE NUMBER. (NO FRACTIONAL OR DECIMAL NUMBERS)		
	3	 <small>SP 13107 48" X 48"</small>	PLACE INITIALLY AT THE CONSTRUCTION LIMITS AND SPACED 1 MILE APART THEREAFTER. IF NO -Y- LINES EXIST, PLACE 2ND SET 1/2 MILE FROM THE CONSTRUCTION LIMITS AND THEN SPACE 1 MILE THEREAFTER.		
	4	 <small>SP 13106 48" X 48"</small>	THESE ARE FOR -Y- LINES THAT ARE "THROUGH" ROADWAYS. DEAD END AND SUBDIVISION ROADS ARE NOT "THROUGH" ROADWAYS. INSTALL 500' +/- FROM EACH -Y- LINE APPROACH AS SHOWN ABOVE. FOR MULTIPLE -Y- LINES THAT ARE SEPARATED BY 0.25 MILES OR LESS, TREAT AS A SINGLE UNIT AND INSTALL WITHIN 500' OF EACH APPROACH. A MAXIMUM OF 2 SIGN SETS PER MILE. DO NOT INSTALL WHEN -Y- LINES ARE WITHIN 0.5 MILES FROM "END ROAD WORK" SIGN.		
	5	 <small>G20-2 A 48" X 24"</small>	PLACE 500' FOLLOWING THE END OF CONSTRUCTION LIMITS.		

NO REQUIRED STATIONARY SIGNING FOR THE FOLLOWING -Y- LINE CONDITIONS:

- 1) LESS THAN 1000' OF RESURFACING ALONG -Y- LINE
- 2) SUBDIVISION ROADS
- 3) DEAD END ROADS

WHEN PAVING/CONSTRUCTION ACTIVITIES PROCEED ACROSS AN UNSIGNED -Y- LINE, ADVANCE WARNING PORTABLE SIGNS SHALL BE USED ALONG THE -Y- LINE AS SHOWN BELOW. REMOVE UPON COMPLETION OF WORK.



PLACED 500' IN ADVANCE OF FLAGGER. PLACED 250' IN ADVANCE OF FLAGGER.

3/19/2015 C:\Users\rmgarrett\Downloads\Resurfacing_AdvWarn.2Ln (2).dgn User:rmgarrett

**RESURFACING
ADVANCE WARNING SIGNS
FOR
RURAL AND SUBURBAN
2 LANE ROADWAYS**