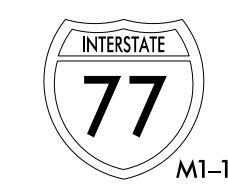
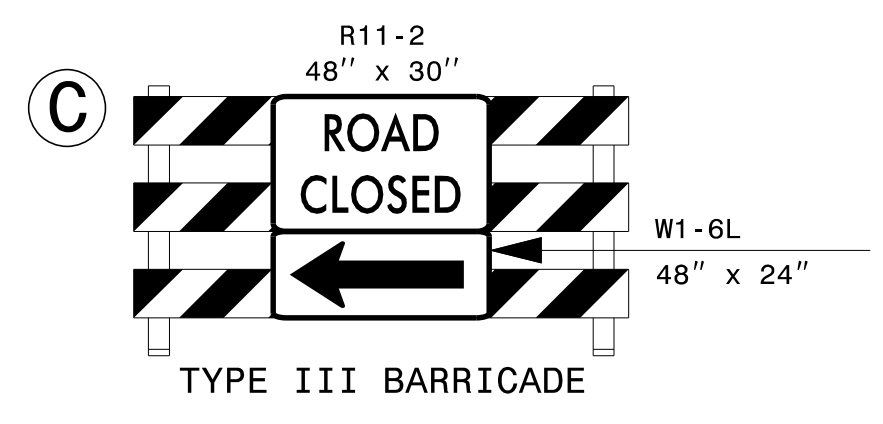
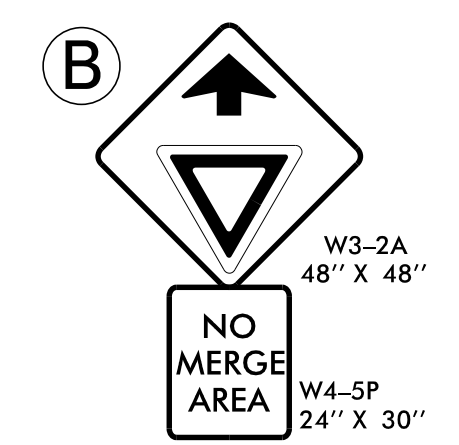
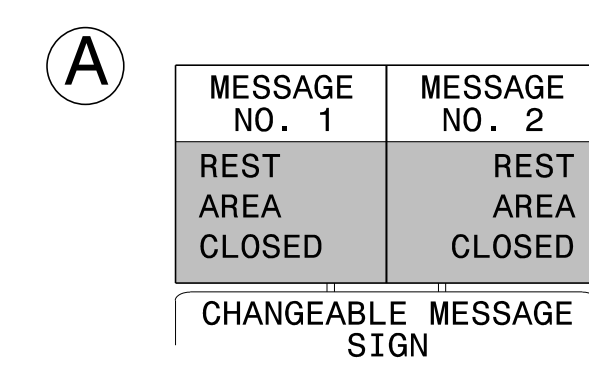
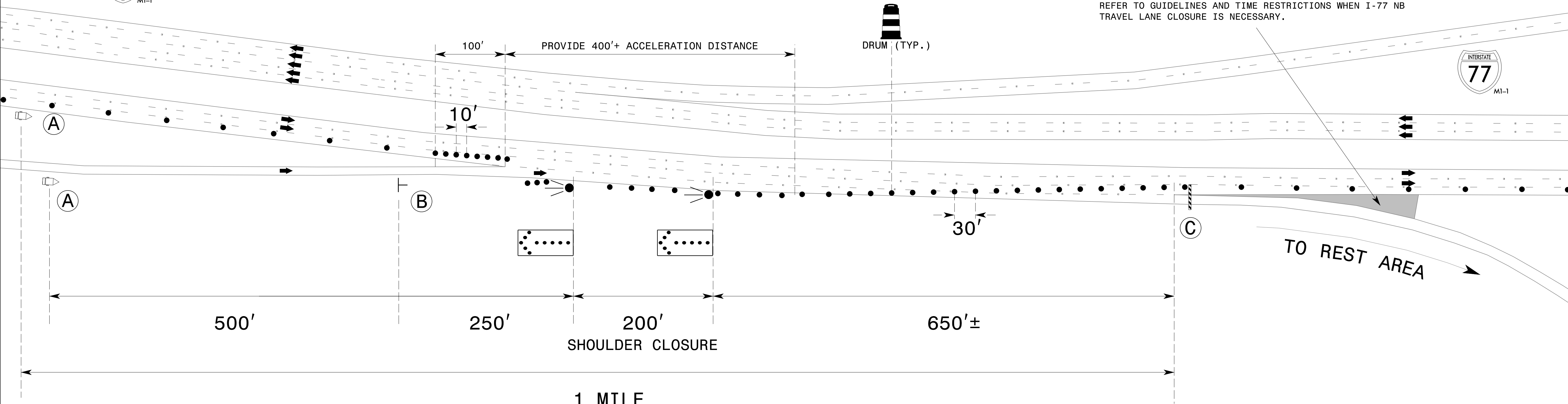


4/26/2016 S:\TMU\WZTC\DesignGroup3\Squad3B\Projects\Mecklenburg I-77 Rest Area Resurfacing\REST_AREA_TC_TMP_2.dgn User:kedais

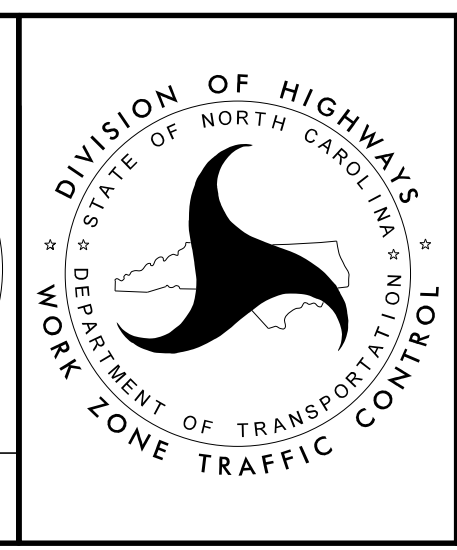


NOTE
REFER TO GUIDELINES AND TIME RESTRICTIONS WHEN I-77 NB TRAVEL LANE CLOSURE IS NECESSARY.



APPROVED: *J. W. Woolard, Jr.*
DATE: 4/26/2016

**DOCUMENT NOT CONSIDERED FINAL
UNLESS ALL SIGNATURES COMPLETED**



**I-77 NB N.C. WELCOME
CENTER RESURFACING
LANE CLOSURE DETAIL**