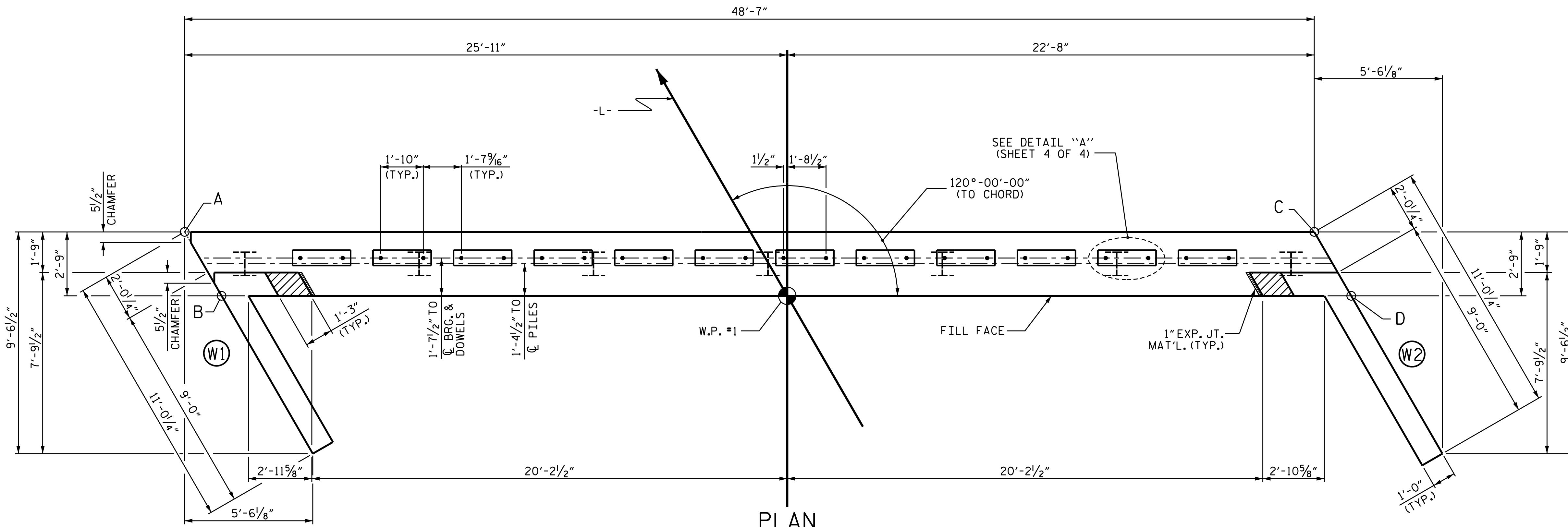
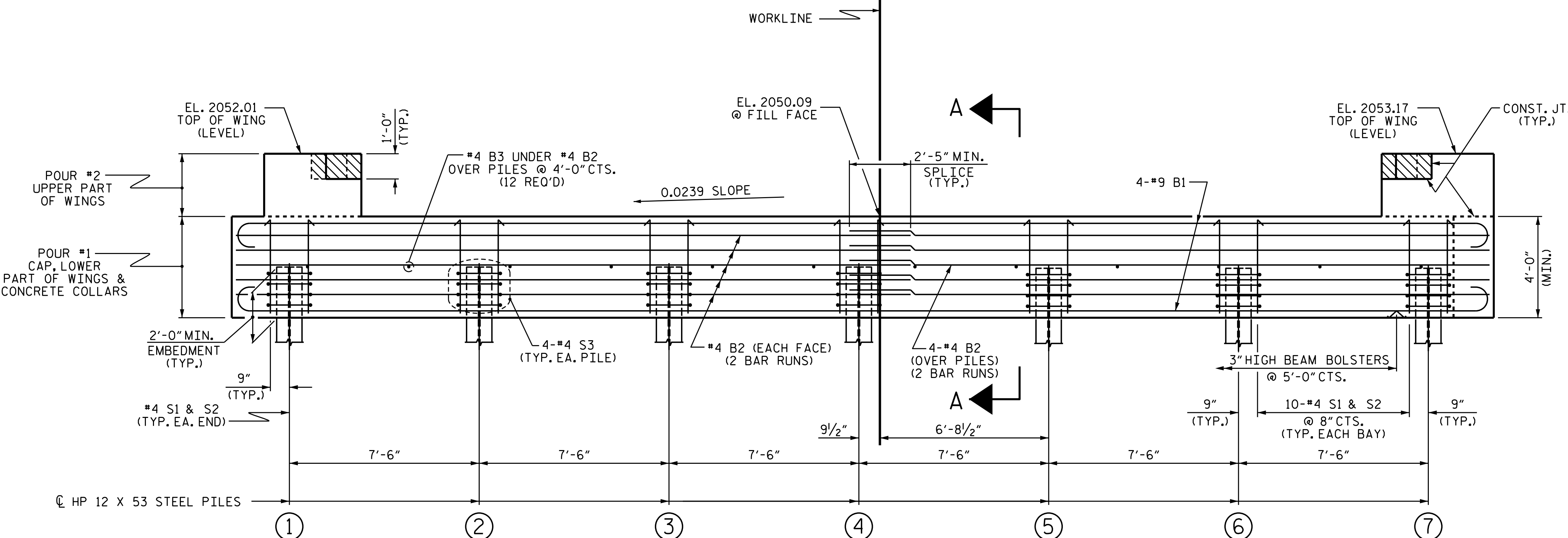


NOTES

STIRRUPS IN CAP MAY BE SHIFTED AS NECESSARY TO CLEAR DOWELS.
 THE CONCRETE IN THE SHADED AREA OF THE WING SHALL BE POURED AFTER THE PARAPET IS CAST IF SLIP FORMING IS USED.
 FOR PILE SPLICE DETAILS, SEE SHEET 4 OF 4.
 FOR WING DETAILS, SEE SHEET 3 OF 4.



PLAN



ELEVATION

WINGS NOT SHOWN FOR CLARITY.
 FOR SECTION A-A, SEE SHEET 4 OF 4.
 CONCRETE COLLARS FOR STEEL PILES NOT SHOWN IN PLAN AND ELEVATION VIEWS FOR CLARITY.
 SEE "CORROSION PROTECTION FOR STEEL PILES DETAIL", SHEET 4 OF 4.

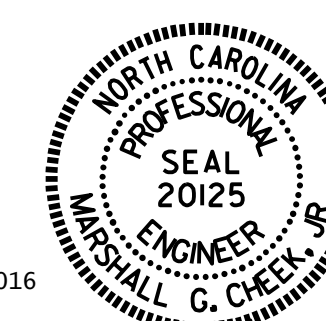
CAP ELEVATIONS		TOP OF PILE ELEVATIONS	
TOP OF CAP		①	2047.55
POINT A	2049.56	②	2047.73
POINT B	2049.51	③	2047.90
POINT C	2050.72	④	2048.08
POINT D	2050.67	⑤	2048.26
BOTTOM OF CAP		⑥	2048.44
POINT A	2045.48	⑦	2048.62
POINT B	2045.51		
POINT C	2046.64		
POINT D	2046.67		

PROJECT NO. B-5410
JACKSON COUNTY
 STATION: 14+13.00 -L-

SHEET 1 OF 4

STATE OF NORTH CAROLINA
 DEPARTMENT OF TRANSPORTATION
 RALEIGH

SUBSTRUCTURE
 END BENT No. 1



4/5/2016

Marshall G. Cheek, Jr.
 654908EBAAS3405

ASSEMBLED BY : M. POOLE DATE : 1-16
 CHECKED BY : M. G. CHEEK DATE : 2-12-16
 DRAWN BY : WJH 12/11
 CHECKED BY : AAC 12/11
 REV. 4/15 MAA/TMG

DOCUMENT NOT CONSIDERED
 FINAL UNLESS ALL
 SIGNATURES COMPLETED

REVISIONS						SHEET NO.
NO.	BY:	DATE:	NO.	BY:	DATE:	S-12
1			3			TOTAL SHEETS 17
2			4			