

# SURVEY CONTROL SHEET B-5410

## -FINAL-

BL POINT	DESC.	NORTH	EAST	ELEVATION	L STATION	OFFSET
1	BL-1	602668.5290	737669.7800	2051.92	10+04.76	12.74 RT
2	BL-2	602805.8610	737778.4170	2050.35	12+13.90	2.95 LT
3	BL-3	602847.5740	738065.0250	2053.57	14+65.04	93.57 RT
4	BL-4	603115.5940	738102.5400	2059.34	16+94.01	13.07 LT
5	BL-5	603497.4880	738209.5720	2076.89		OUTSIDE PROJECT LIMITS

-FINAL- ROW MARKER IRON PIN AND CAP-E

ALIGN	STATION	OFFSET	NORTH	EAST
L	11+50.00	-29.46	602808.3704	737709.2823
L	12+00.00	-45.00	602840.4045	737750.6970
L	13+18.31	-45.00	602881.7617	737861.5430
L	16+53.14	-45.00	603086.8802	738059.3542
L	17+46.14	-29.89	603170.3679	738103.0131

PUE  
-FINAL- ROW MARKER PERMANENT EASEMENT-E

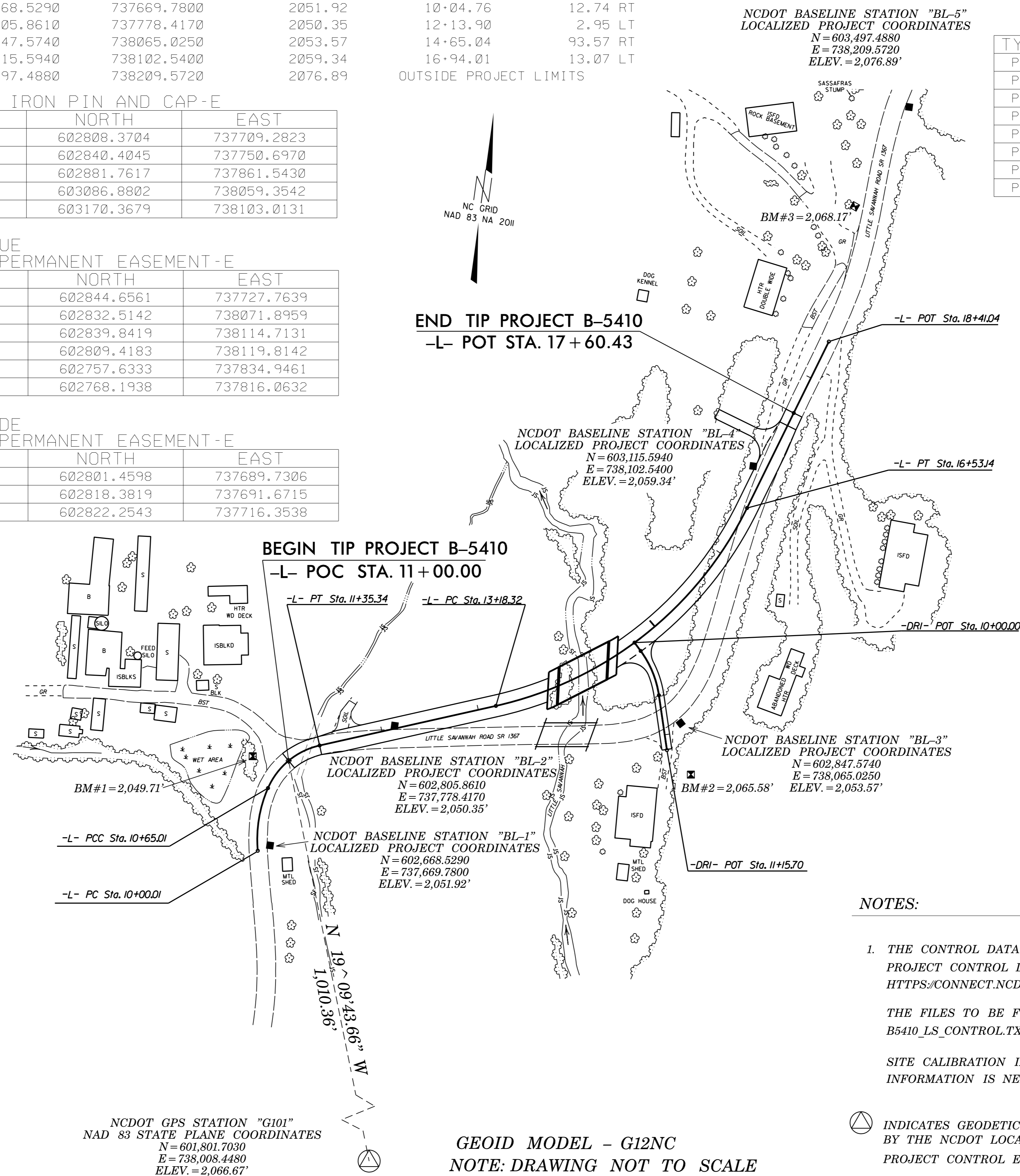
ALIGN	STATION	OFFSET	NORTH	EAST
L	11+80.00	-57.00	602844.6561	737727.7639
L	14+61.00	109.31	602832.5142	738071.8959
L	14+88.00	134.00	602839.8419	738114.7131
L	14+75.00	159.00	602809.4183	738119.8142
L	12+50.00	62.00	602757.6333	737834.9461
L	12+36.00	45.50	602768.1938	737816.0632

PDE  
-FINAL- ROW MARKER PERMANENT EASEMENT-E

ALIGN	STATION	OFFSET	NORTH	EAST
L	11+31.00	-30.00	602801.4598	737689.7306
L	11+37.00	-45.00	602818.3819	737691.6715
L	11+61.48	-40.00	602822.2543	737716.3538

-L- FINAL

TYPE	STATION	NORTH	EAST
POT	10+00.00	602661.5045	737658.2364
PC	10+00.01	602661.4983	737658.2378
PT	10+65.01	602725.8043	737659.9036
PC	10+65.01	602725.8043	737659.9036
PT	11+35.34	602775.6417	737705.8497
PC	13+18.32	602839.6028	737877.2793
PT	16+53.14	603072.6896	738102.0582
POT	18+41.04	603250.9997	738161.3110



\*\*\*\*\*  
 BM1 ELEVATION = 2049.71  
 N 602756 E 737640  
 L STATION 10+82.00 30 LEFT  
 8 INCH SPIKE SET IN BASE OF 24 INCH  
 PINETREE  
 \*\*\*\*\*

\*\*\*\*\*  
 BM2 ELEVATION = 2065.58  
 N 602797 E 738082  
 L STATION 14+49.00 143 RIGHT  
 8 INCH SPIKE SET IN BASE OF 24 INCH  
 POPLAR TREE  
 \*\*\*\*\*

\*\*\*\*\*  
 BM3 ELEVATION = 2068.17  
 N 603390 E 738169  
 L STATION 18+41.00  
 N 03° 04' 13.24" E DIST 139.54  
 8 INCH SPIKE SET IN BASE OF 24 INCH  
 PINETREE  
 \*\*\*\*\*

**DATUM DESCRIPTION**

THE LOCALIZED COORDINATE SYSTEM DEVELOPED FOR THIS PROJECT IS BASED ON THE STATE PLANE COORDINATES ESTABLISHED BY NCGS FOR MONUMENT "G101" WITH NAD 83/NSRS 2011 STATE PLANE GRID COORDINATES OF NORTHING: 601801.703(±) EASTING: 738008.448(±) ELEVATION: 2066.674(±) THE AVERAGE COMBINED GRID FACTOR USED ON THIS PROJECT (GROUND TO GRID) IS: 0.999793433 THE N.C. LAMBERT GRID BEARING AND LOCALIZED HORIZONTAL GROUND DISTANCE FROM "G101" TO -L- STATION 11+35.33 IS N 19° 09' 43.66" W 1,010.36' ALL LINEAR DIMENSIONS ARE LOCALIZED HORIZONTAL DISTANCES VERTICAL DATUM USED IS NAVD 88

NCDOT GPS STATION "G101"  
 NAD 83 STATE PLANE COORDINATES  
 N = 601,801.7030  
 E = 738,008.4480  
 ELEV. = 2,066.67'

GEOID MODEL - G12NC  
 NOTE: DRAWING NOT TO SCALE

**NOTES:**

- THE CONTROL DATA FOR THIS PROJECT CAN BE FOUND ELECTRONICALLY BY SELECTING PROJECT CONTROL DATA AT:  
[HTTPS://CONNECT.NCDOT.GOV/RESOURCES/LOCATION/](https://connect.ncdot.gov/resources/location)  
 THE FILES TO BE FOUND ARE AS FOLLOWS:  
 B5410\_LS\_CONTROL.TXT
  - SITE CALIBRATION INFORMATION HAS NOT BEEN PROVIDED FOR THIS PROJECT. IF FURTHER INFORMATION IS NEEDED, PLEASE CONTACT THE LOCATION AND SURVEYS UNIT.
- ⊕ INDICATES GEODETIC CONTROL MONUMENTS USED OR SET FOR HORIZONTAL PROJECT CONTROL BY THE NCDOT LOCATION AND SURVEYS UNIT.  
 PROJECT CONTROL ESTABLISHED USING GLOBAL POSITIONING SYSTEM.

6/2/09  
 29-MAR-2016 12:06 L:\5410\_1s\_1c-1.dgn  
 11:50:15 AM