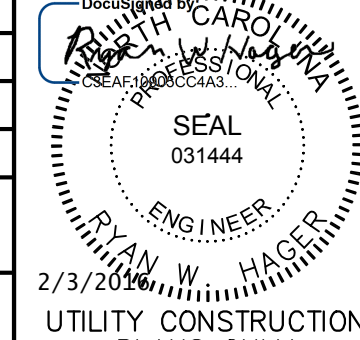
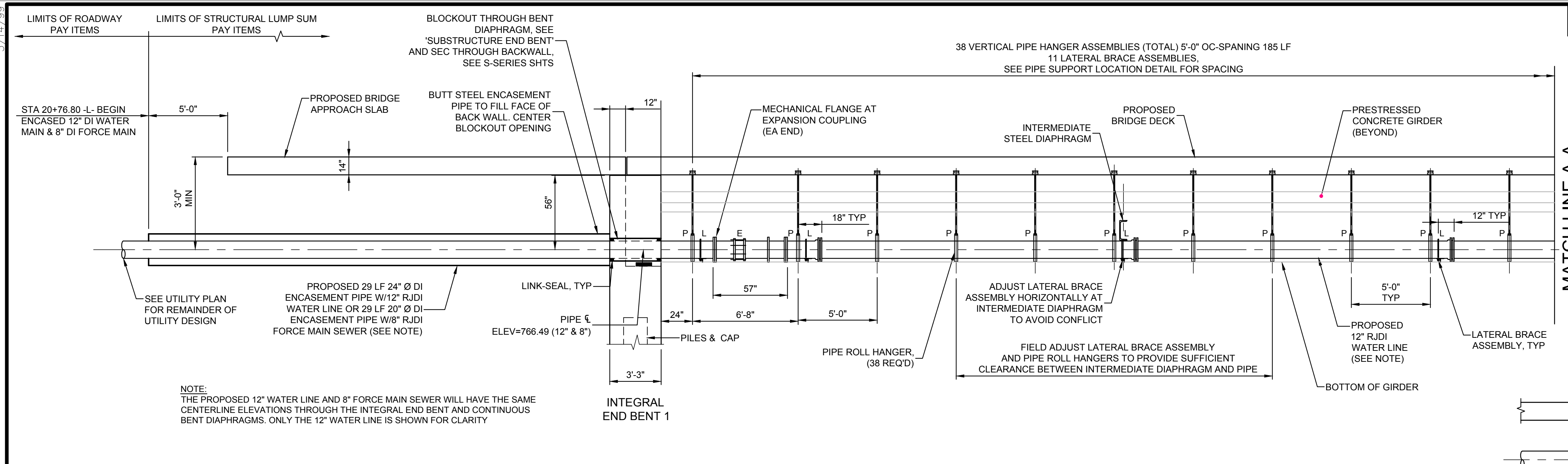


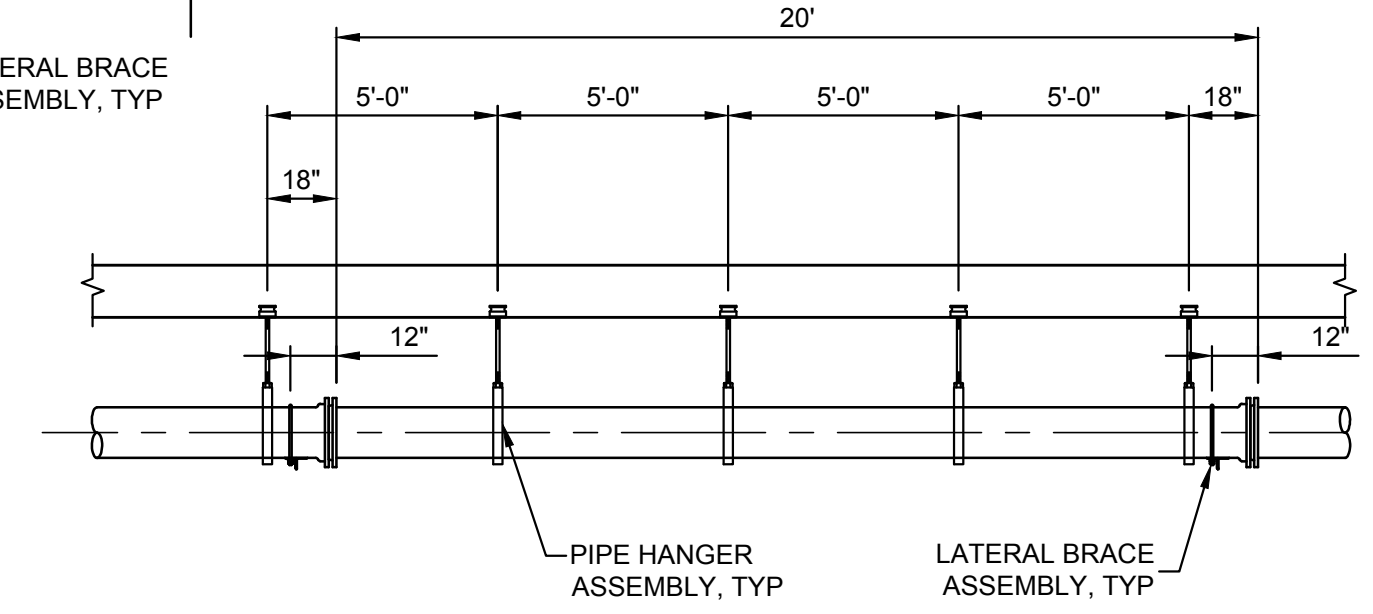
5/14/2019

DOCUMENT NOT CONSIDERED FINAL UNLESS ALL SIGNATURES COMPLETED	PROJECT REFERENCE NO.	SHEET NO.
	B-5142	S-33
	DESIGNED BY: MOS	TOTAL SHEETS 38
	DRAWN BY: MOS	
	CHECKED BY: RW#1	
APPROVED BY:		
REVISED:		
NORTH CAROLINA DEPARTMENT OF TRANSPORTATION		
UTILITIES ENGINEERING SEC.		
PHONE: (919) 707-6690 FAX: (919) 250-4151		

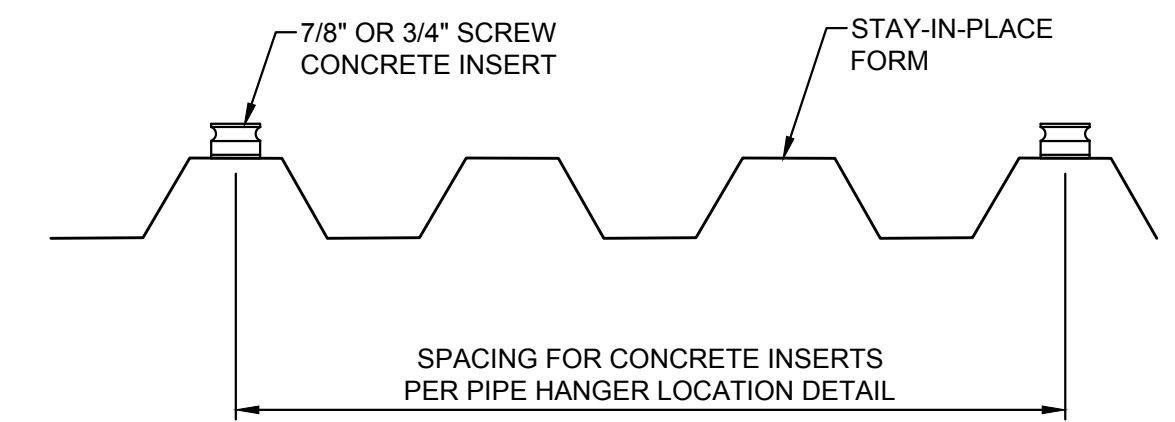
STRUCTURAL UTILITY CONSTRUCTION



NOTE:
THE PROPOSED 12" WATER LINE AND 8" FORCE MAIN SEWER WILL HAVE THE SAME CENTERLINE ELEVATIONS THROUGH THE INTEGRAL END BENT AND CONTINUOUS BENT DIAPHRAGMS. ONLY THE 12" WATER LINE IS SHOWN FOR CLARITY

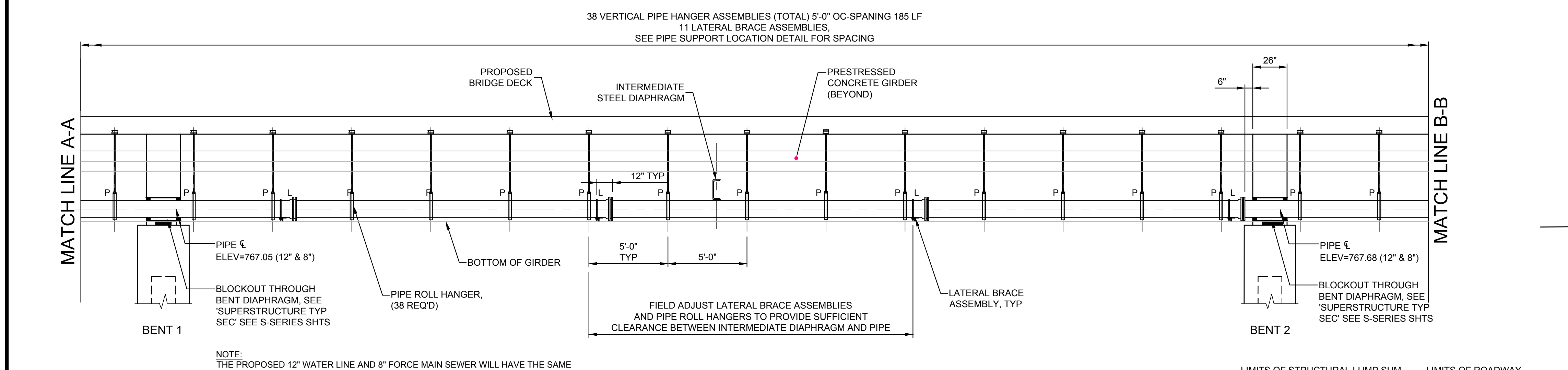


PIPE SUPPORT LOCATION DETAIL
NOT TO SCALE



- NOTES:**
- INSERTS MUST BE LOCATED IN THE HIGH PART OF THE STAY-IN-PLACE FORMS.
 - EXACT SPACING MAY VARY IN ORDER TO AVOID LOCATING INSERTS ON SLOPING OR LOW SURFACE OF FORM.

**BRIDGE DECK INSERT
LOCATION DETAIL**
NOT TO SCALE



ESTIMATED BILL OF MATERIALS FOR 12" WATER MAIN

NO.	UNITS	ITEM
1	38 EA	PIPE HANGER ASSEMBLY
2	11 EA	LATERAL BRACE ASSEMBLY
3	2 EA	EXPANSION COUPLING ASSEMBLY
4	4 EA	LINK SEAL OR EQUAL
5	58 LF	24" DIA STEEL ENCASUREMENT
6	258 LF	12" RJDJ WATER PIPE

ESTIMATED BILL OF MATERIALS FOR 8" FORCE MAIN

NO.	UNITS	ITEM
1	38 EA	PIPE HANGER ASSEMBLY
2	11 EA	LATERAL BRACE ASSEMBLY
3	2 EA	EXPANSION COUPLING ASSEMBLY
4	4 EA	LINK SEAL OR EQUAL
5	58 LF	20" DIA STEEL ENCASUREMENT
6	258 LF	8" RJDJ FORCE MAIN SEWER PIPE

STRUCTURE PAY ITEMS

- 12" WATER LINE PIPE AND SUSPENSION SYSTEM
- 8" FORCE MAIN SEWER PIPE AND SUSPENSION SYSTEM

SEE S-33 SPECIAL PROVISIONS FOR UTILITY PIPING AND SUSPENSION SYSTEM

WK DICKSON
community infrastructure consultants

401 4TH STREET SW
SUITE 201
HICKORY, NC 28602
(828) 327-6911
(828) 327-9164
WWW.WKDICKSON.COM
NC LICENSE NO. F-0374