

**CONTRACT: C203662 TIP NO: B-5142**

STATE OF NORTH CAROLINA

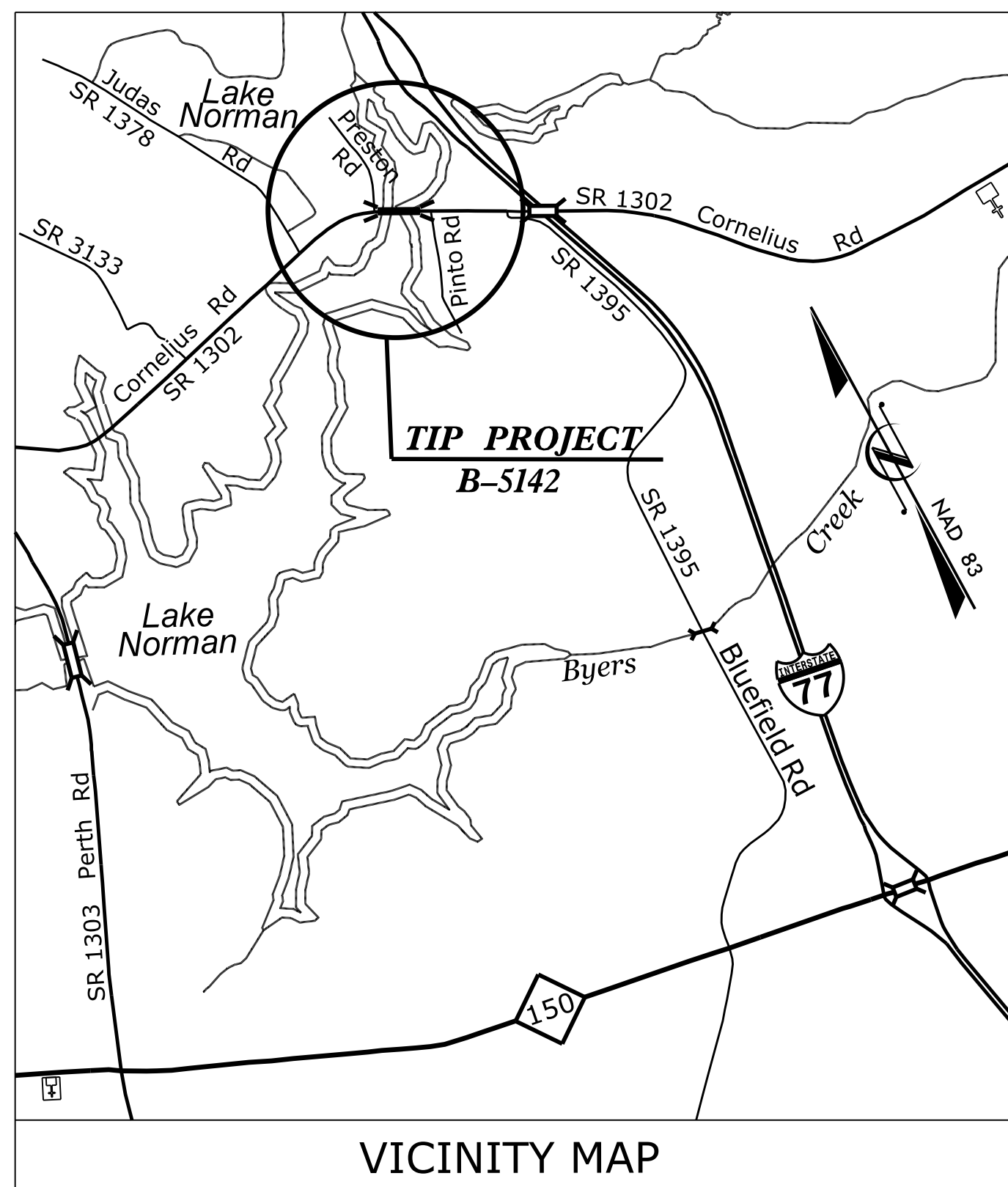
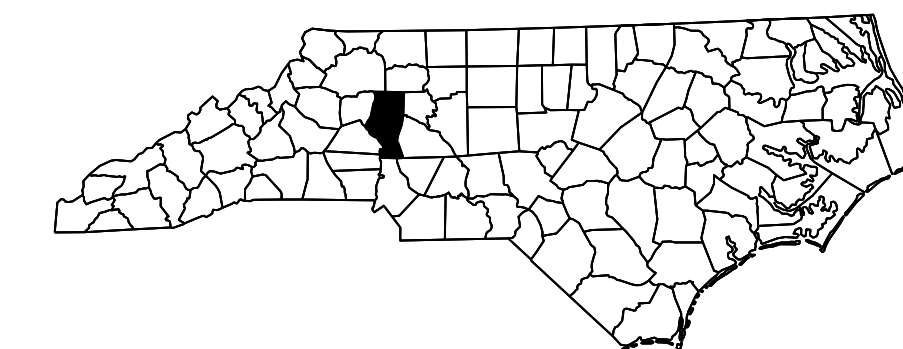
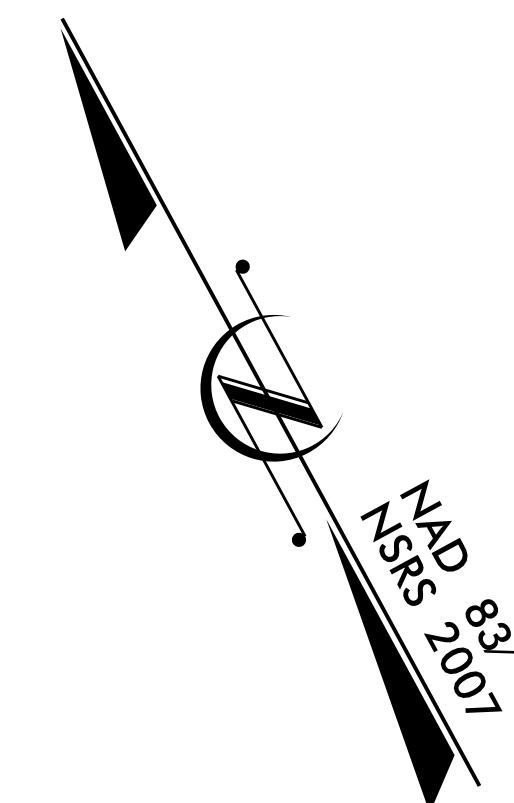
DIVISION OF HIGHWAYS

# IREDELL COUNTY

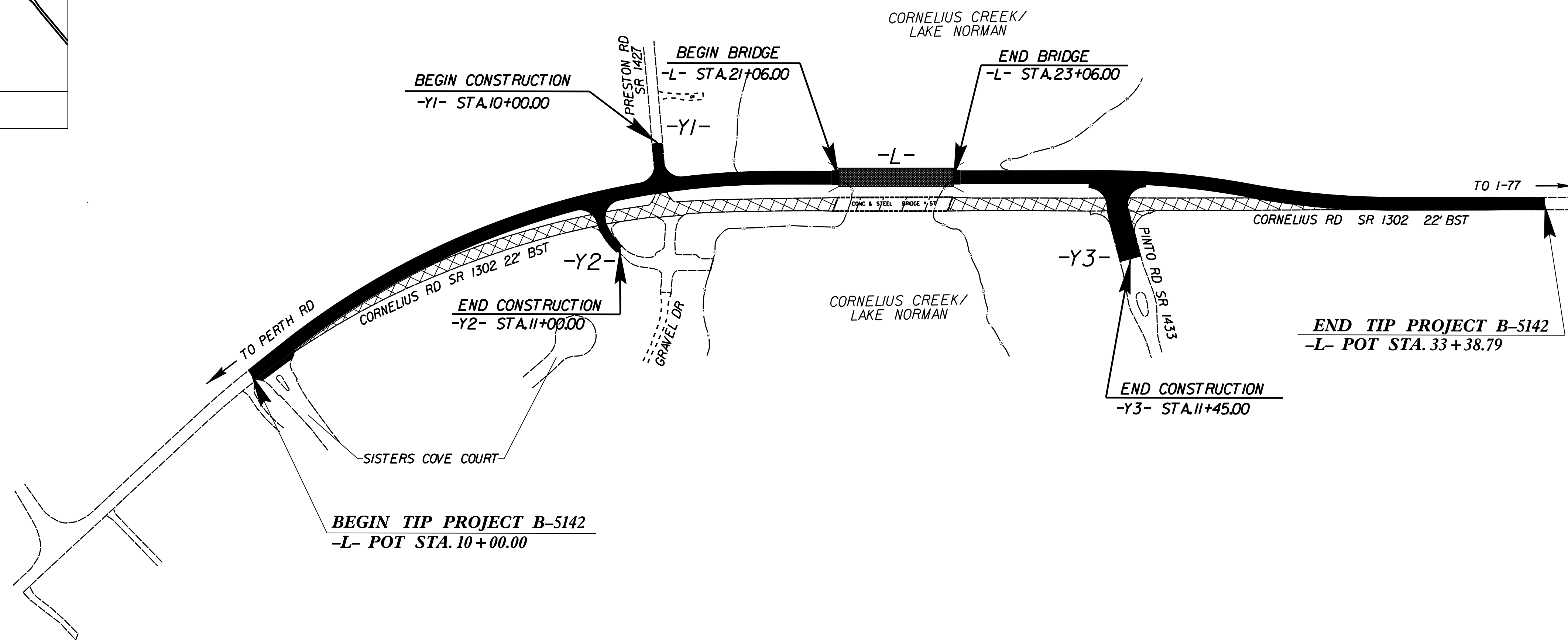
**LOCATION: REPLACE BRIDGE NO. 57 ON SR 1302  
OVER CORNELIUS CREEK**

**TYPE OF WORK: GRADING, DRAINAGE, PAVING AND STRUCTURE**

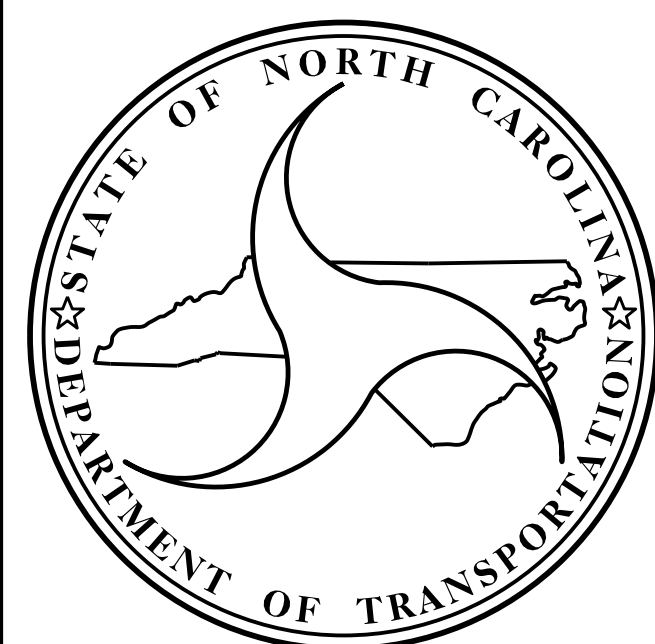
STATE	STATE PROJECT REFERENCE NO.	SHEET NO.	TOTAL SHEETS
N.C.	B-5142		
STATE PROJ. NO.	F.A. PROJ. NO.	DESCRIPTION	
42303.1.1	BRZ-1302(41)	PE	
42303.2.FD1	BRZ-1302(41)	R/W, UTIL	
42303.3.FD1	BRZ-1302(41)	CONST.	



VICINITY MAP



## STRUCTURE



**DESIGN DATA**

ADT 2016 = 10,884  
 ADT 2036 = 18,164  
 K = 12 %  
 D = 70 %  
 T = 4 % \*  
 V = 60 MPH  
 \* TTST = 3 DUAL 1  
 FUNC CLASS =  
 Collector  
 SUB-REGIONAL TIER

**PROJECT LENGTH**

LENGTH OF ROADWAY TIP PROJECT B-5142 = 0.405 MILES  
 LENGTH OF STRUCTURE TIP PROJECT B-5142 = 0.038 MILES  
 TOTAL LENGTH OF TIP PROJECT B-5142 = 0.443 MILES

Prepared in the Office of:  
**DIVISION OF HIGHWAYS**  
 STRUCTURES MANAGEMENT UNIT  
 1000 BIRCH RIDGE DR.  
 RALEIGH, N.C. 27610

2012 STANDARD SPECIFICATIONS

LETTING DATE :  
JUNE 21, 2016

LAURA E. SUTTON, PE  
 PROJECT ENGINEER

DONALD R. SMITH, JR., PE  
 PROJECT DESIGN ENGINEER