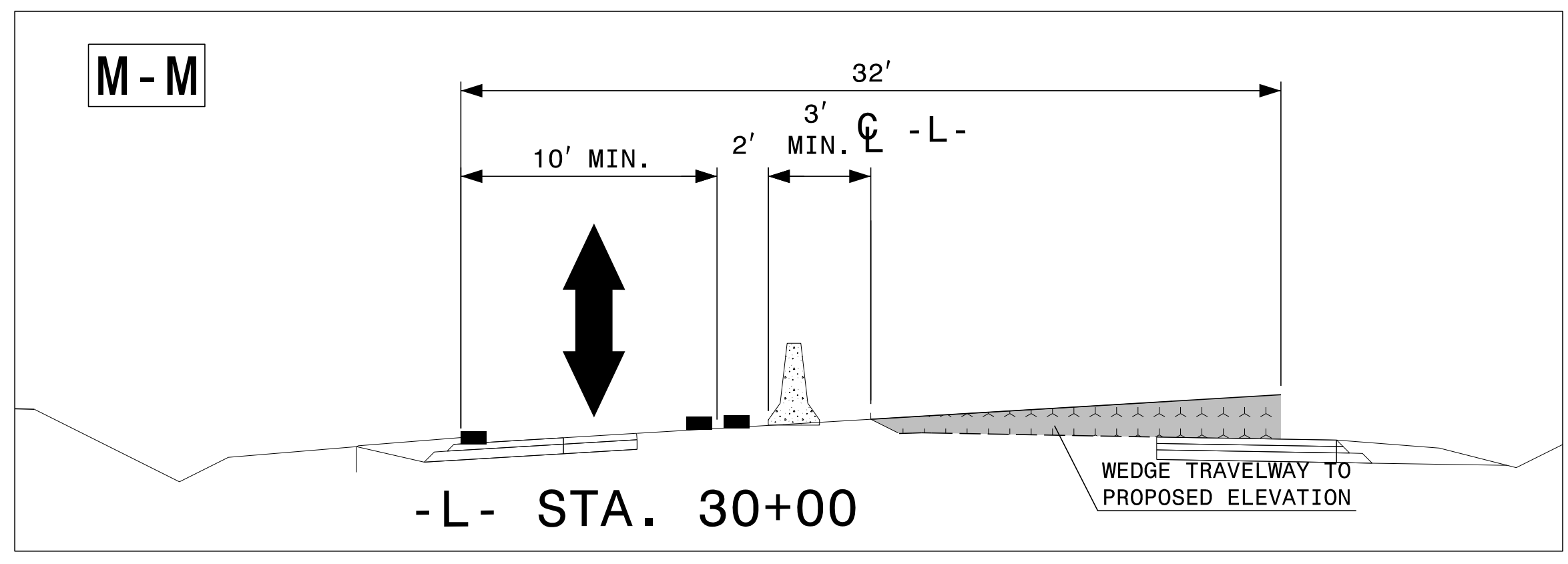
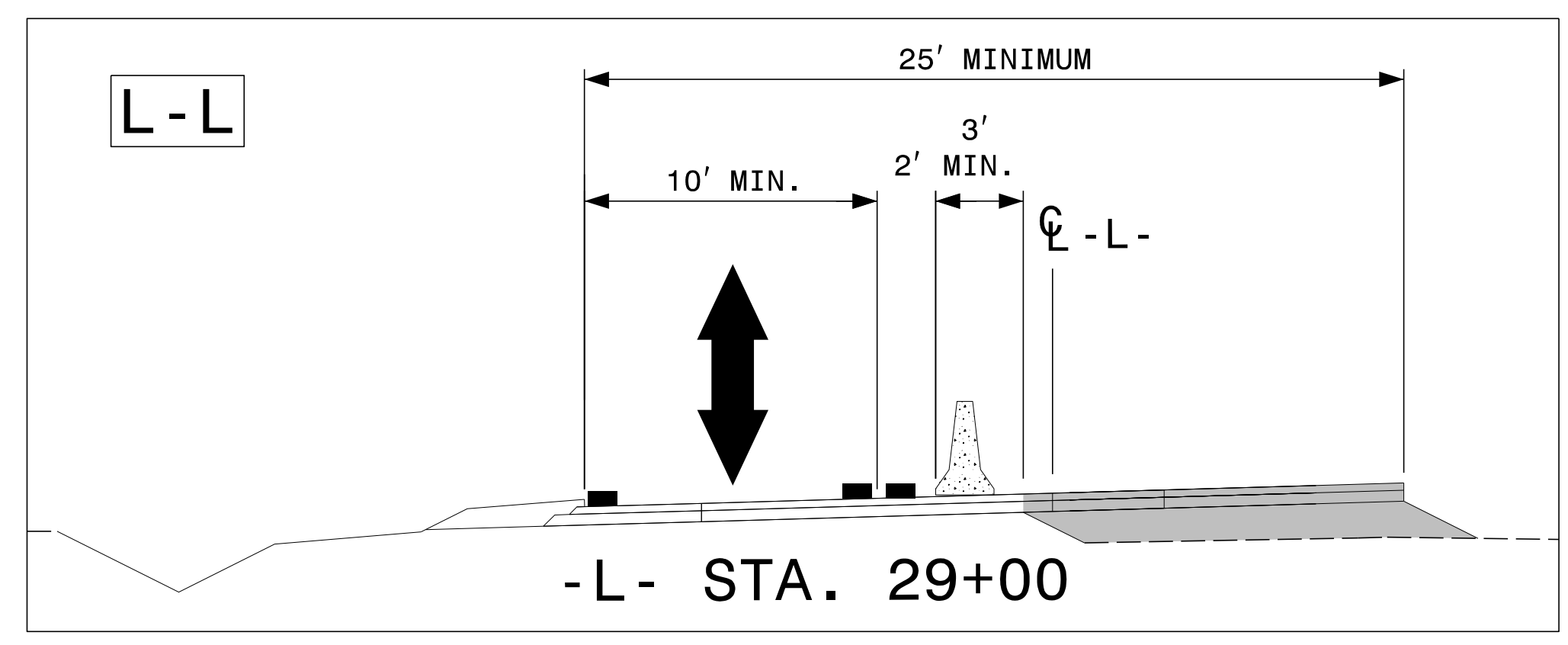
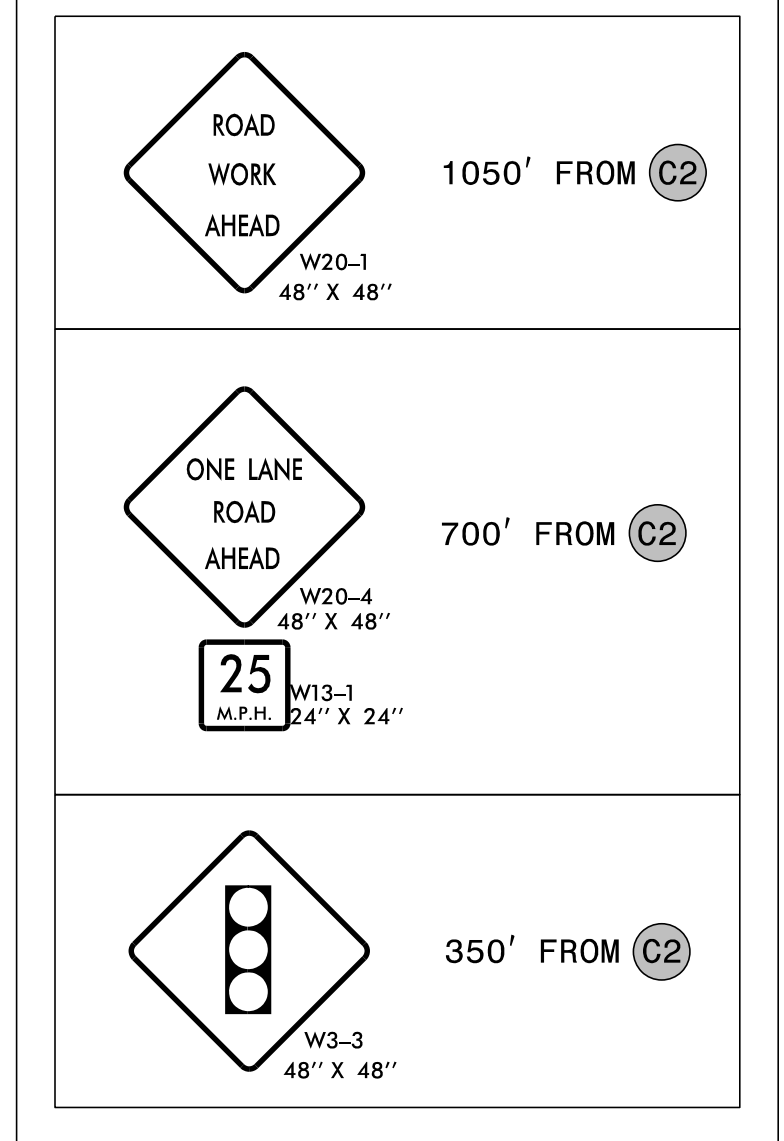


SEE RSD 1101.02, SHEET 1 OF 15, FOR FLAGGER, TAPER, AND BUFFER LOCATIONS

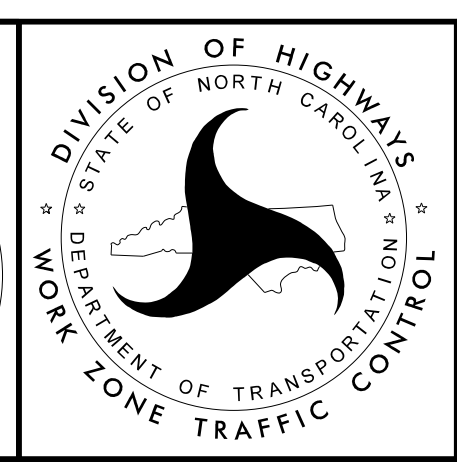
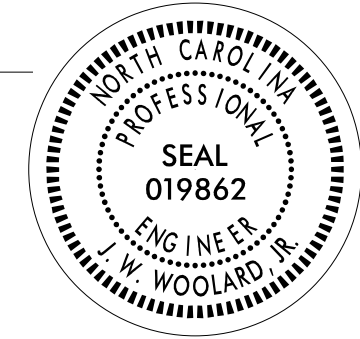
INSTALL ADVANCE WARNING SIGNS AS SHOWN IN FIGURE "SP"

FIGURE "SP"



10/5/2015 P:\TIP\Projects-B\B5142\TrafficControl\TCP\B-5142-TC-TMP_P2b2.dgn User:shanson

APPROVED: *J. W. Woolard, Jr.*
 DATE: 10/6/2015



PHASE I
 STEP 4
 DETAIL