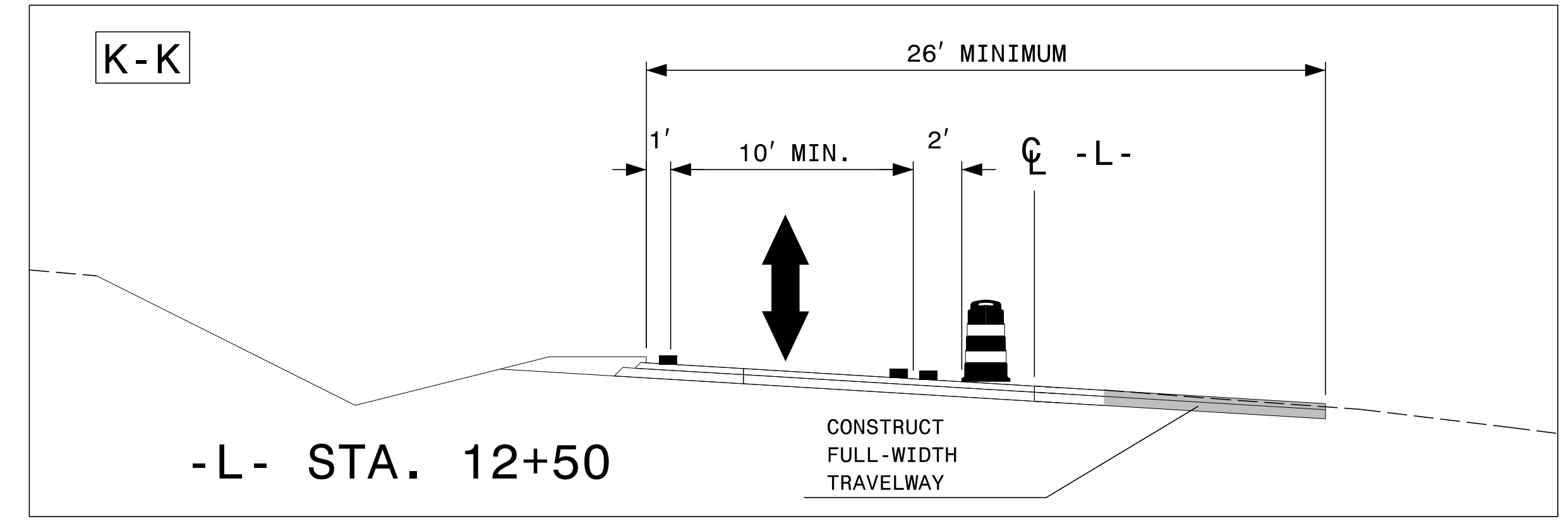
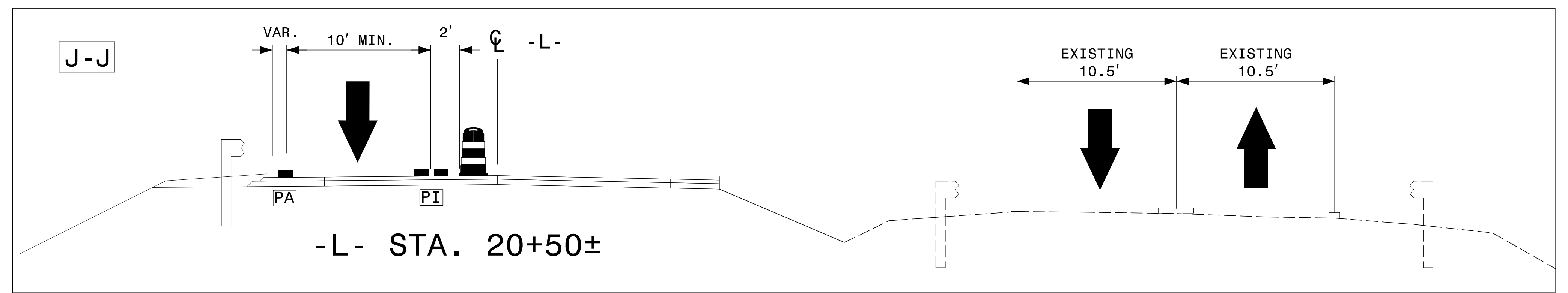
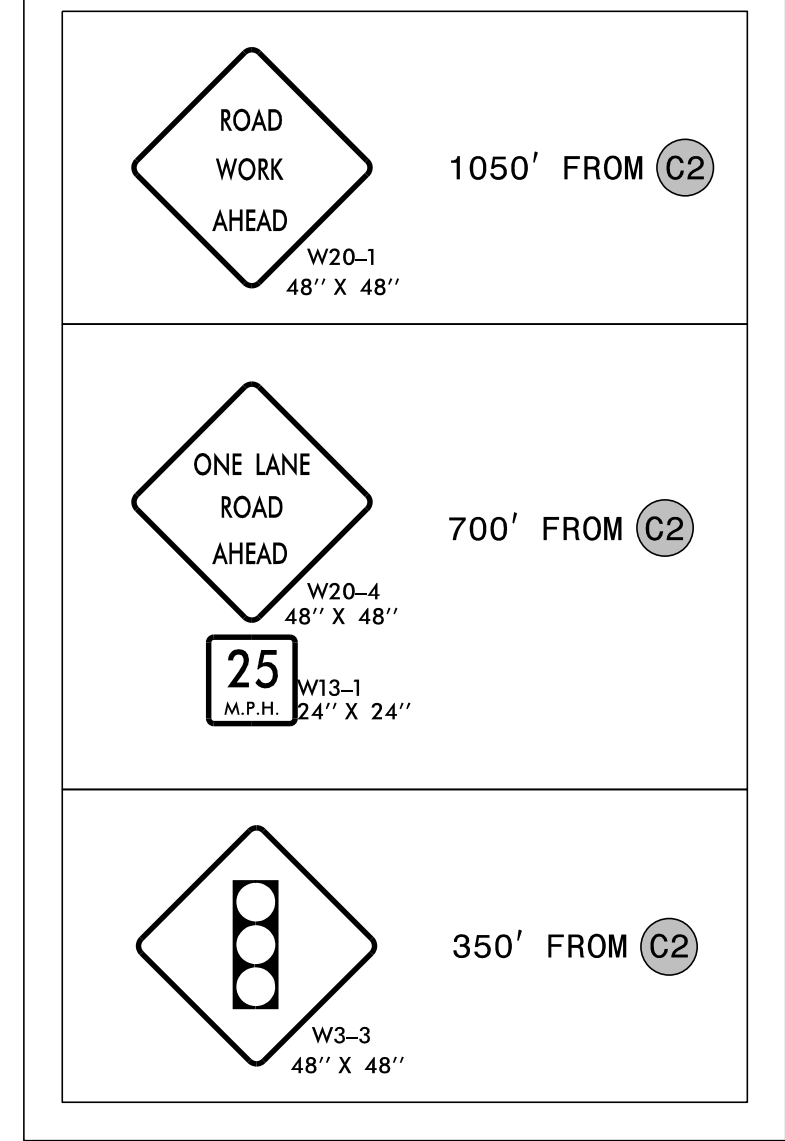


SEE RSD 1101.02, SHEET 1 OF 15, FOR
FLAGGER, TAPER, AND BUFFER LOCATIONS

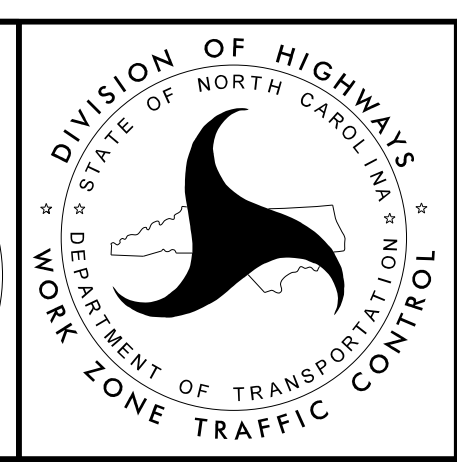
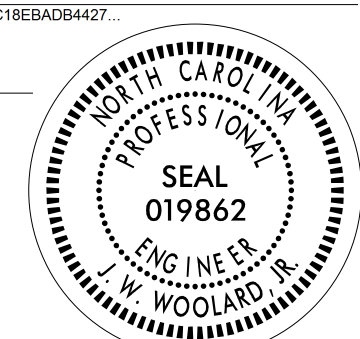
| | |
|-------------------------|---------------|
| MESSAGE NO. 1 | MESSAGE NO. 2 |
| TWIN SISTER LANE | NEXT RIGHT |
| CHANGEABLE MESSAGE SIGN | |

| | |
|-------------------------|---------------|
| MESSAGE NO. 1 | MESSAGE NO. 2 |
| TWIN SISTER LANE | NEXT LEFT |
| CHANGEABLE MESSAGE SIGN | |

FIGURE "SP"



APPROVED: *J. W. Woolard, Jr.*
DATE: 10/6/2015



PHASE I
STEP 4
DETAIL

10/5/2015
P:\TIP\Projects-B\B5142\TrafficControl\CPN-B-5142-TC-TMP_P22.blgdn
User:shanson