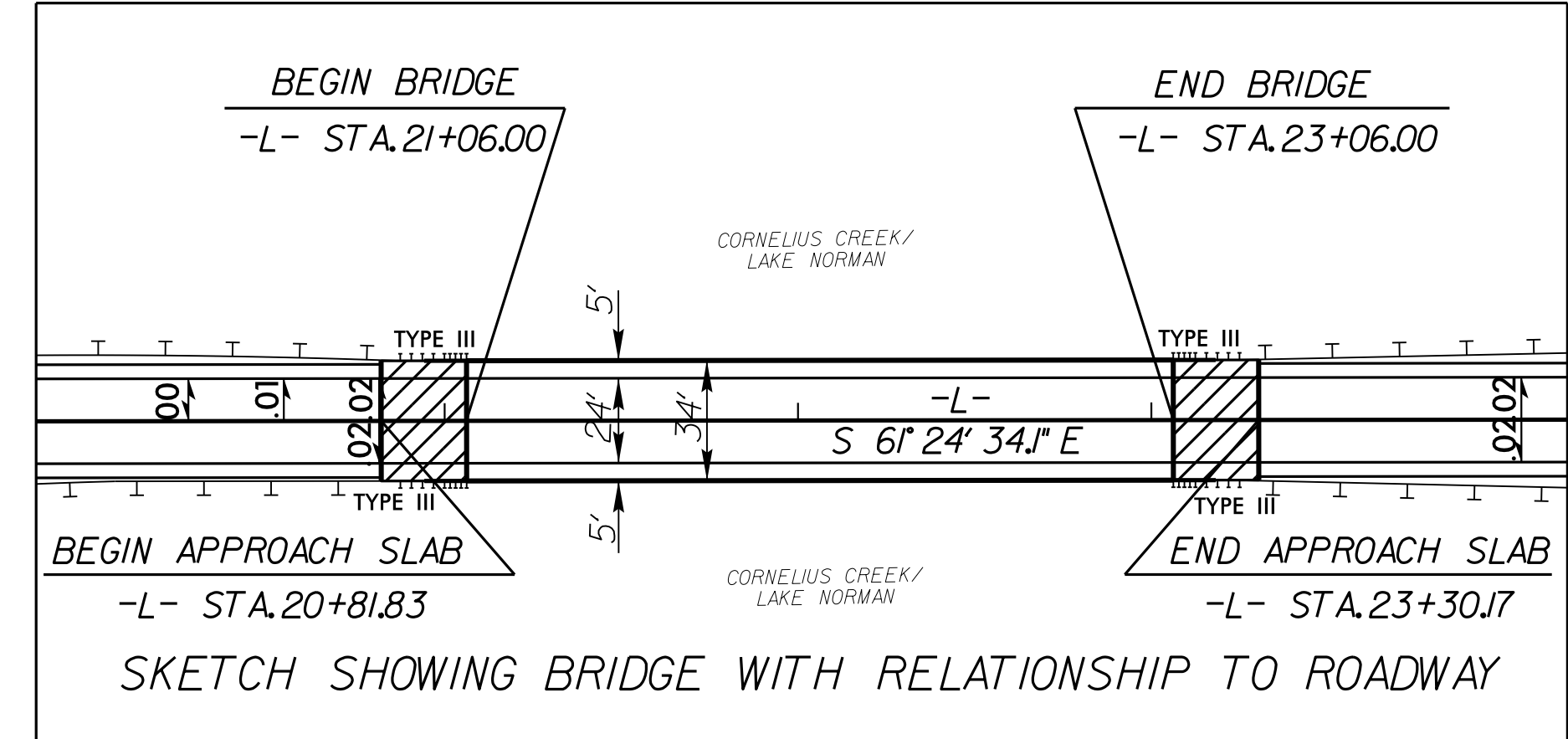
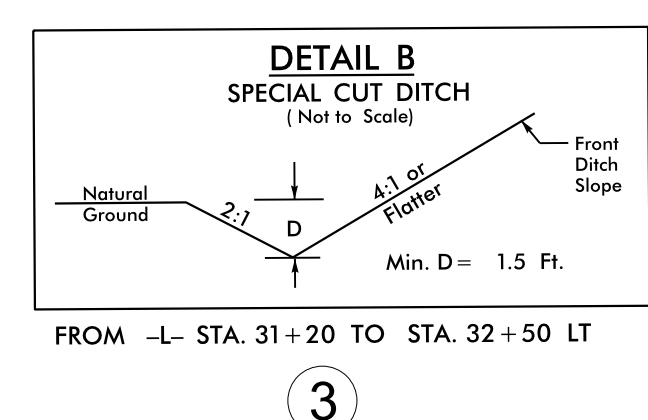
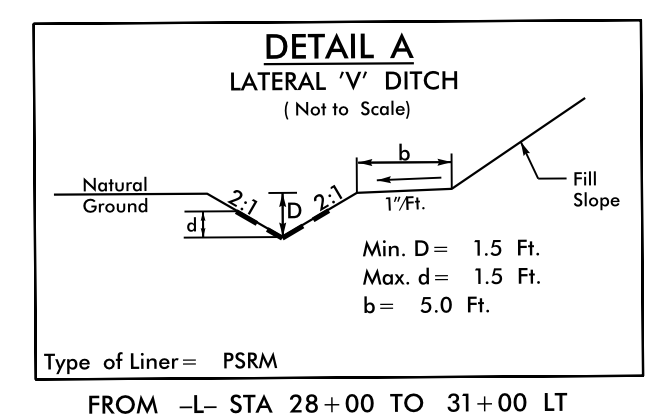
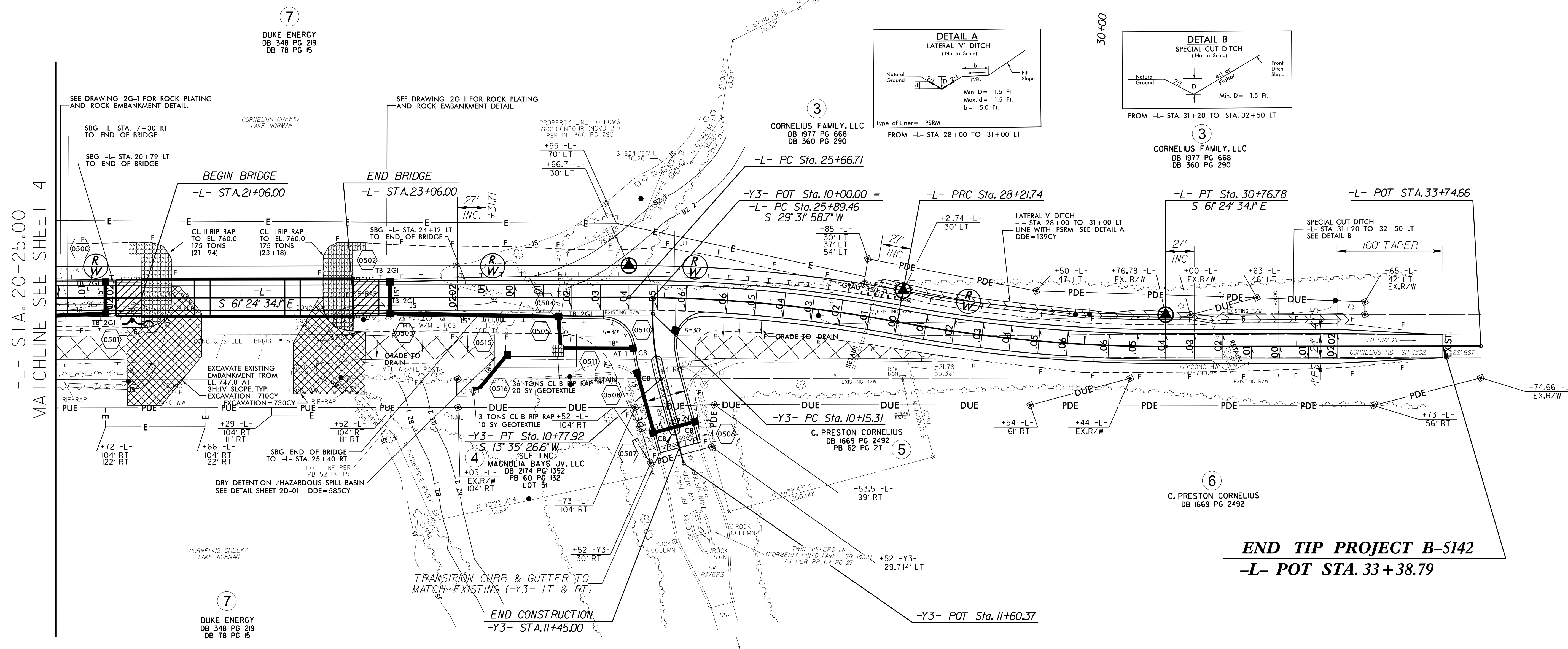
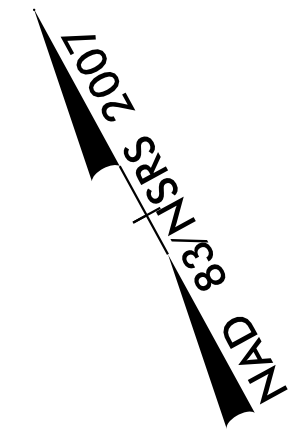


-L-
 PI Sta 26+94.59
 $\Delta = 10^\circ 35' 20.0''$ (RT)
 $D = 4^\circ 09' 06.7''$
 $L = 255.04'$
 $T = 127.88'$
 $R = 1,380.00'$
 $SE = .06$
 $V_D = 60$ mph

-Y3-
 PI Sta 29+49.63
 $\Delta = 10^\circ 35' 20.0''$ (LT)
 $D = 4^\circ 09' 06.7''$
 $L = 255.04'$
 $T = 127.88'$
 $R = 1,380.00'$
 $SE = .06$
 $V_D = 60$ mph

-Y3-
 PI Sta 10+46.82
 $\Delta = 15^\circ 56' 32.1''$ (LT)
 $D = 25^\circ 27' 53.2''$
 $L = 62.61'$
 $T = 31.51'$
 $R = 225.00'$



END TIP PROJECT B-5142
-L- POT STA. 33+38.79

SEE SHEET 2B-01 FOR -Y3- BRICK PAVER TRANSITION AND CONCRETE HEADER
 SEE SHEET 2B-02 FOR TEMPORARY WIDENING ALONG THE EXISTING -EL-
 SEE SHEET 2D-01 FOR DRY DETENTION/HAZARDOUS SPILL BASIN DETAIL
 SEE SHEET 6 FOR -L- PROFILE
 SEE SHEET 7 FOR -Y3- PROFILE
 SEE SHEET TMP-03 FOR SHORING LOCATION
 SEE SHEETS S-1 THRU S-38 FOR STRUCTURE PLANS



REVISIONS

-L- STA. 20+25.00
 MATCHLINE SEE SHEET 4

8/17/99

27-OCT-2015 14:39 B-5142-Rdy_pst5.dgn
 9:58:05 AM