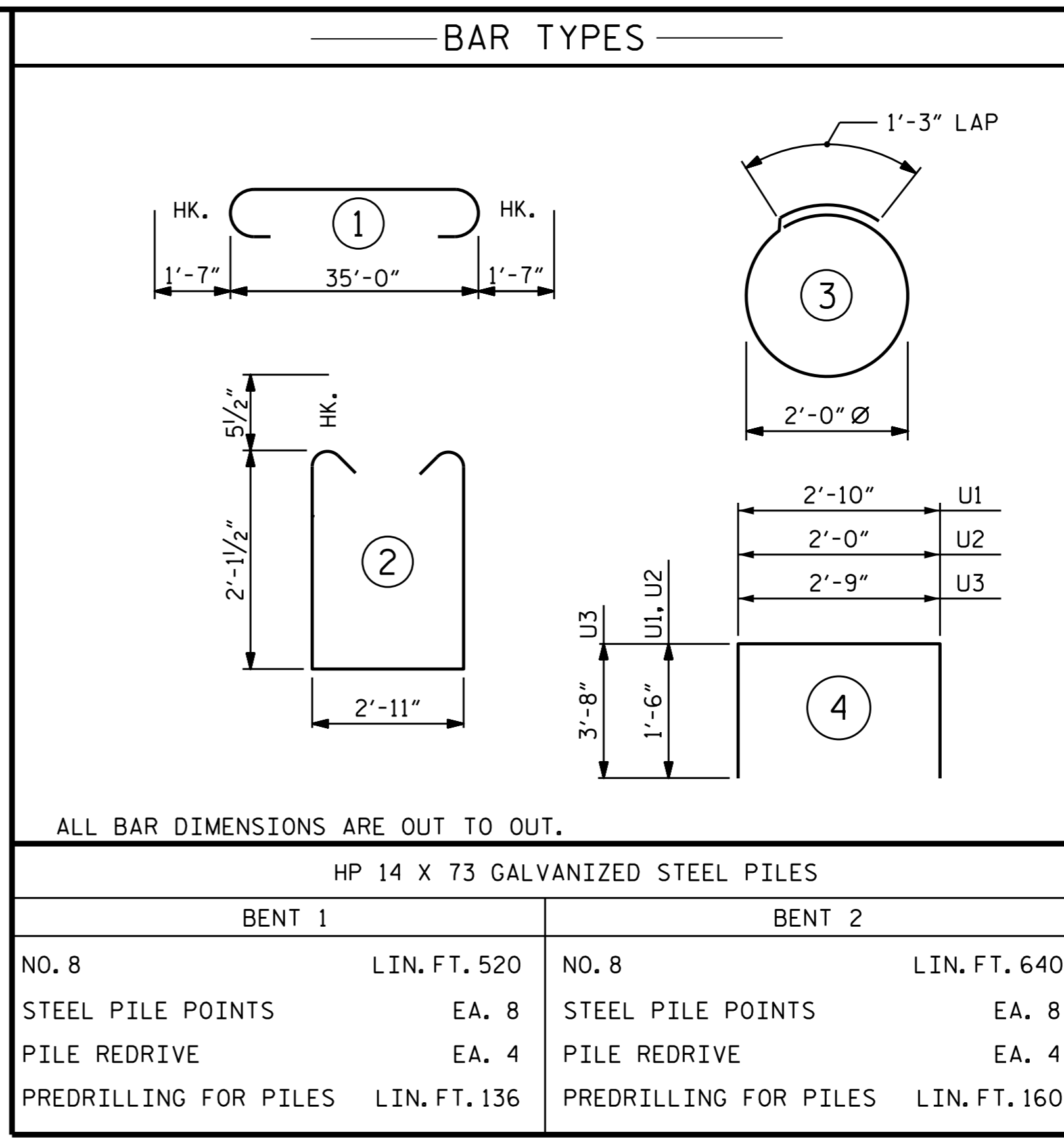


PILE SPLICE DETAILS

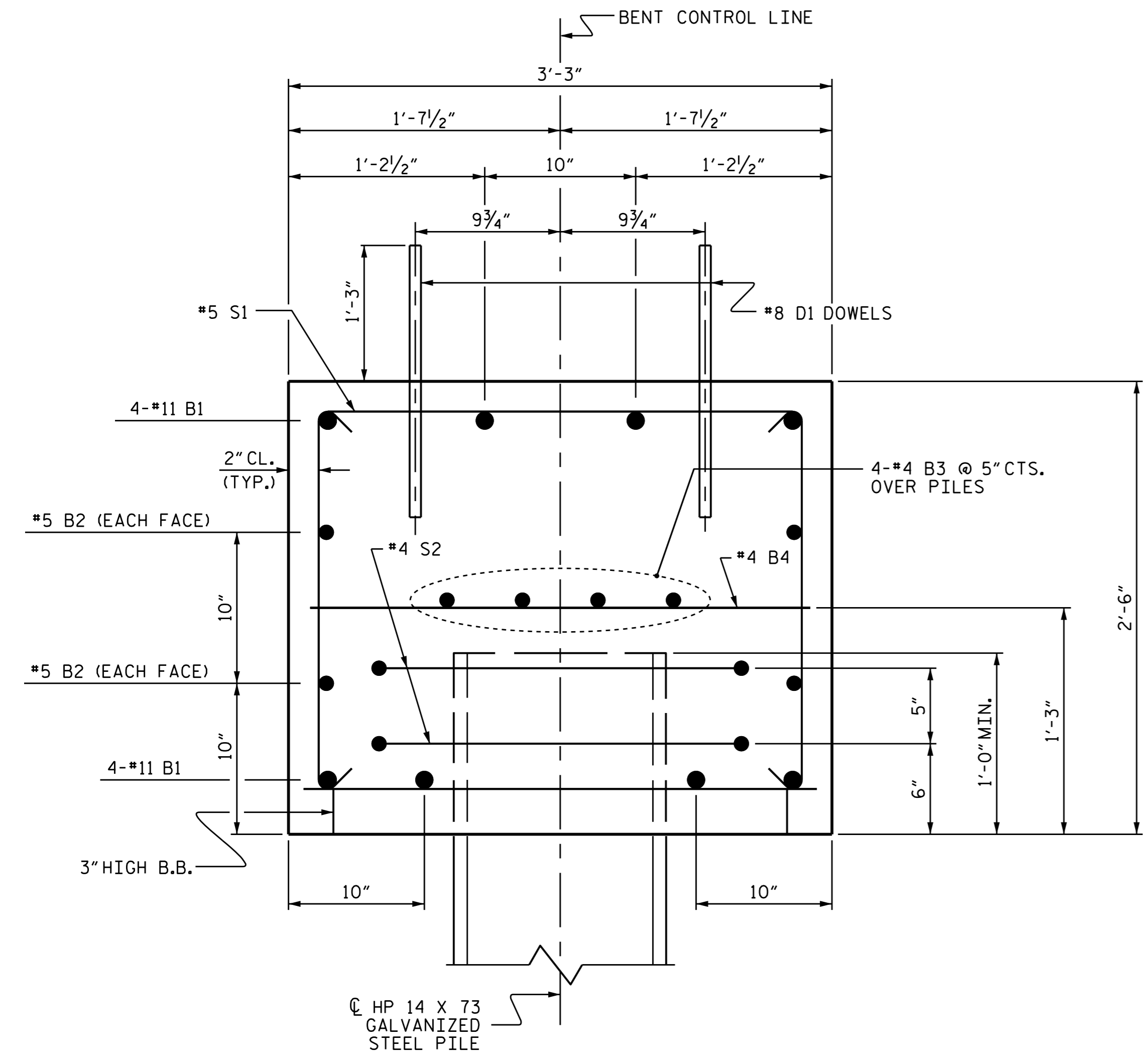


ALL BAR DIMENSIONS ARE OUT TO OUT.

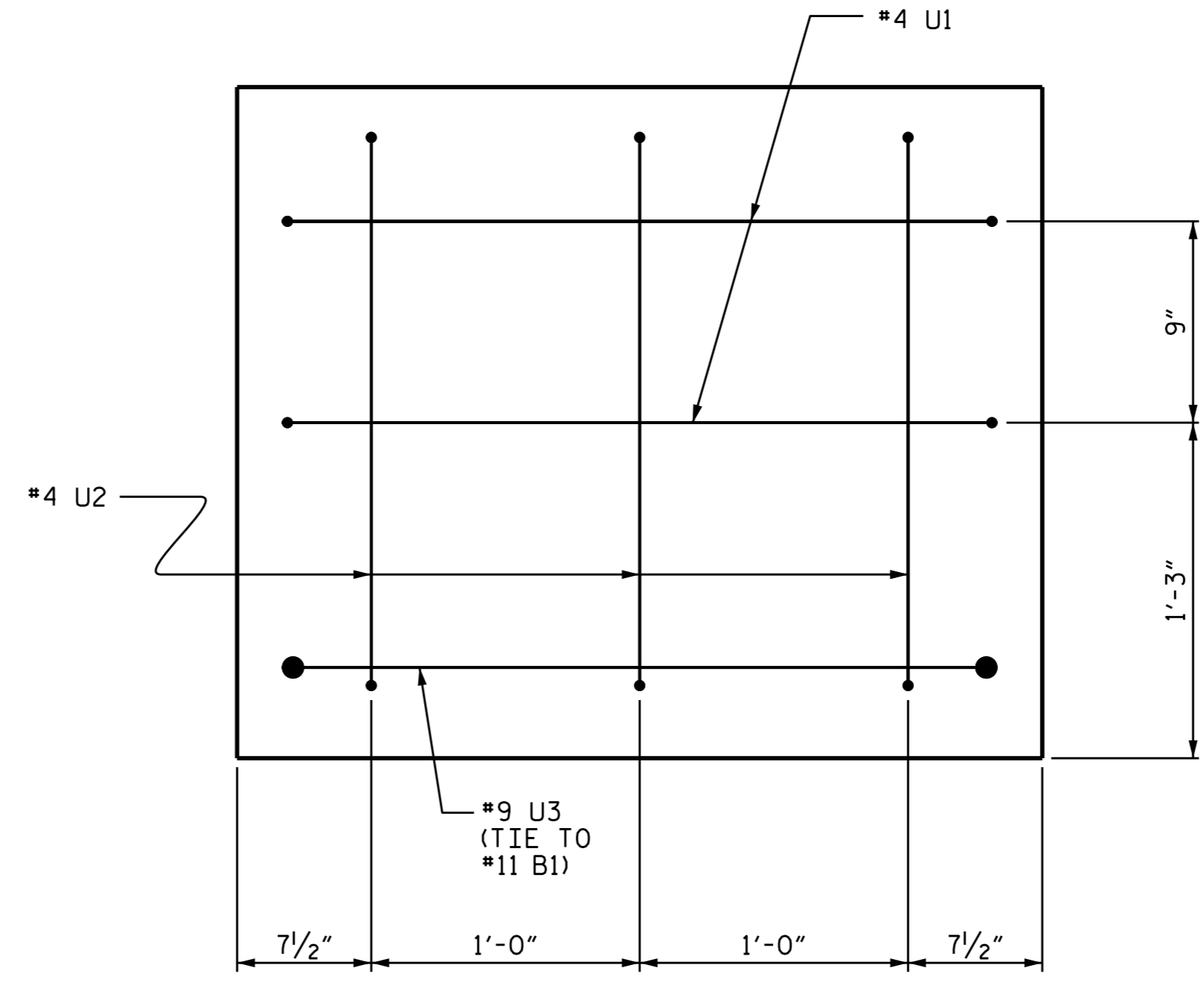
HP 14 X 73 GALVANIZED STEEL PILES			
BENT 1		BENT 2	
NO. 8	LIN. FT. 520	NO. 8	LIN. FT. 640
STEEL PILE POINTS	EA. 8	STEEL PILE POINTS	EA. 8
PILE REDRIVE	EA. 4	PILE REDRIVE	EA. 4
PREDRILLING FOR PILES	LIN. FT. 136	PREDRILLING FOR PILES	LIN. FT. 160

BILL OF MATERIAL FOR ONE BENT (2 REQ'D)

BAR	NO.	SIZE	TYPE	LENGTH	WEIGHT
B1	8	#11	1	38'-2"	1622
B2	4	#5	STR	35'-2"	147
B3	8	#4	STR	18'-10"	101
B4	9	#4	STR	2'-11"	18
D1	44	#8	STR	2'-3"	264
S1	53	#5	2	8'-1"	447
S2	16	#4	3	7'-7"	81
U1	4	#4	4	5'-10"	16
U2	6	#4	4	5'-0"	20
U3	2	#9	4	10'-1"	69
REINFORCING STEEL (FOR ONE BENT)					2785 LBS
CLASS A CONCRETE BREAKDOWN (FOR ONE BENT)					
TOTAL CLASS A CONCRETE					10.7 C.Y.



SECTION A-A



END OF CAP VIEW (TYPICAL BOTH ENDS)

PROJECT NO. B-4967
SCOTLAND & HOKE COUNTY
STATION: 16+74.50 -L-

SHEET 2 OF 2

STATE OF NORTH CAROLINA
DEPARTMENT OF TRANSPORTATION
RALEIGH

SUBSTRUCTURE
BENTS 1 & 2



DocuSigned by:
Ting Fang
5/10/2016

DESIGN ENGINEER OF RECORD: P. K. NEWTON DATE: 4/4/16
DRAWN BY: D. J. POZOS DATE: 08-24-15
CHECKED BY: W. F. PARKER DATE: 09-09-15
DRAWN BY: DGE 05/10 CHECKED BY: MKT 05/10
REV. 11/14 MAA/TMG

DOCUMENT NOT CONSIDERED FINAL UNLESS ALL SIGNATURES COMPLETED

REVISIONS						SHEET NO.
NO.	BY:	DATE:	NO.	BY:	DATE:	S-21
1			3			TOTAL SHEETS
2			4			23