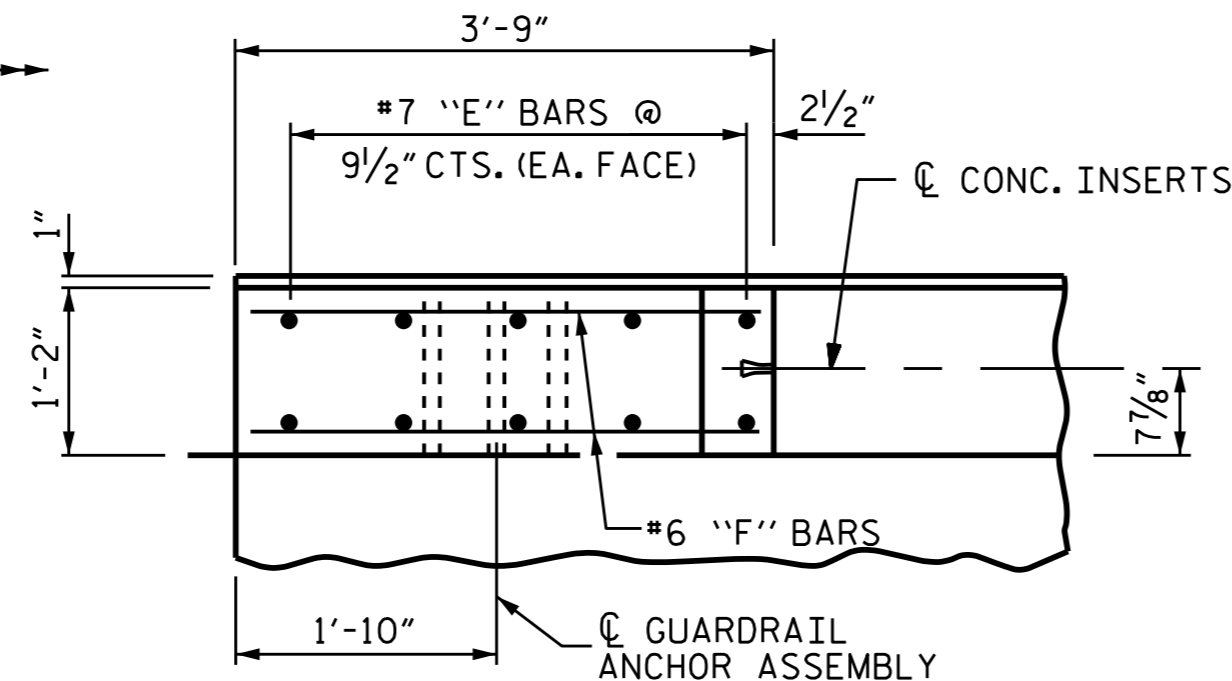


PLAN OF PARAPET
AT END BENT 1, END BENT 2 SIMILAR

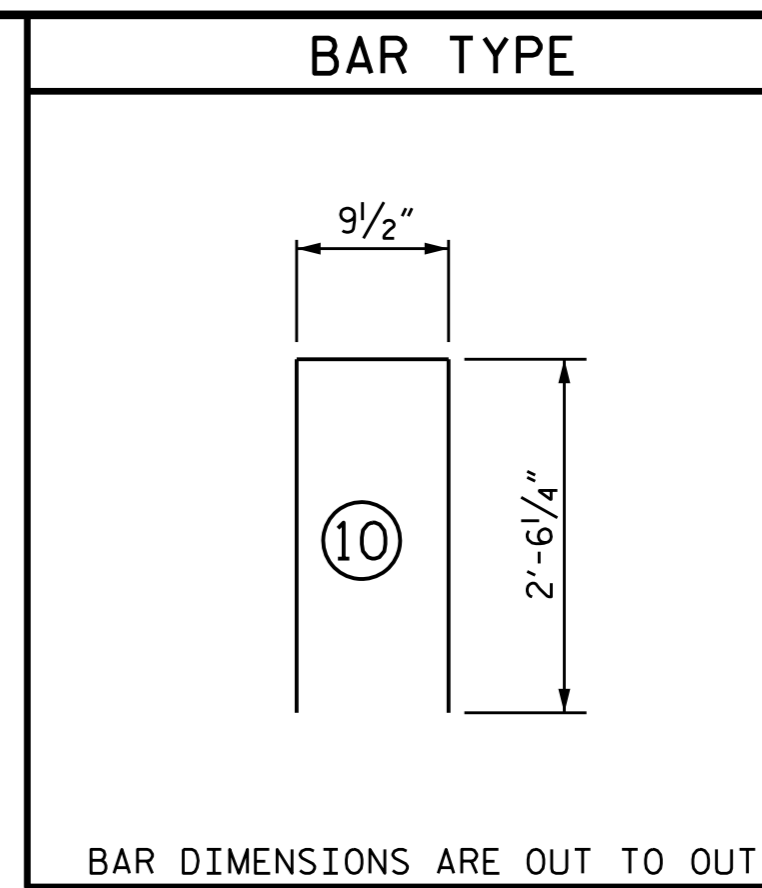


PLAN OF END POST

NOTES:

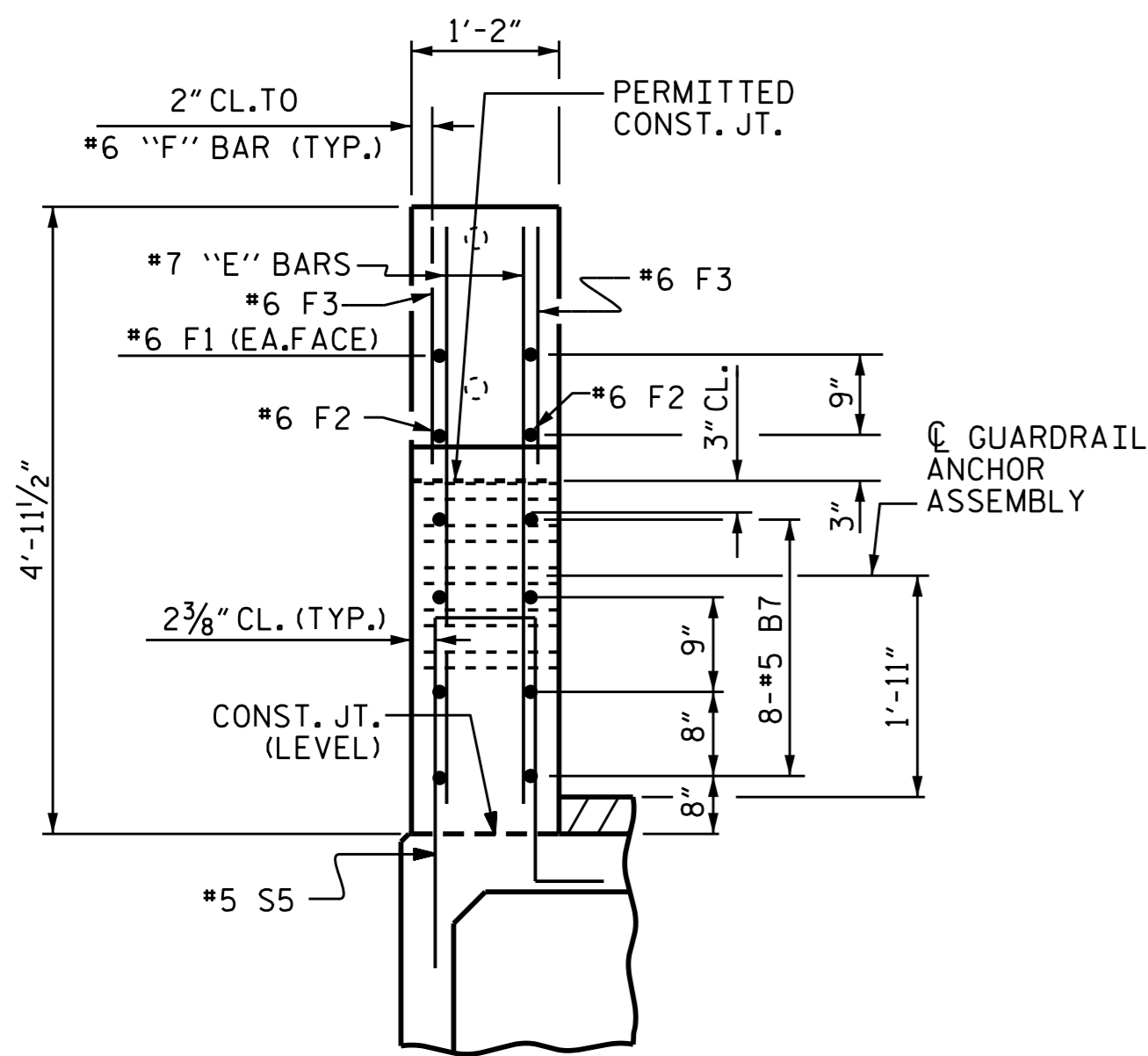
ALL REINFORCING STEEL IN PARAPETS AND END POSTS SHALL BE EPOXY COATED.

GROOVED CONTRACTION JOINTS, 1/2" IN DEPTH, SHALL BE TOOLED IN ALL EXPOSED FACES OF THE PARAPET AND IN ACCORDANCE WITH ARTICLE 825-10(B) OF THE STANDARD SPECIFICATIONS. A CONTRACTION JOINT SHALL BE LOCATED AT EACH THIRD POINT BETWEEN PARAPET EXPANSION JOINTS. ONLY ONE CONTRACTION JOINT IS REQUIRED AT MIDPOINT OF PARAPET SEGMENTS LESS THAN 20 FEET IN LENGTH AND NO CONTRACTION JOINTS ARE REQUIRED FOR THOSE SEGMENTS LESS THAN 10 FEET IN LENGTH.

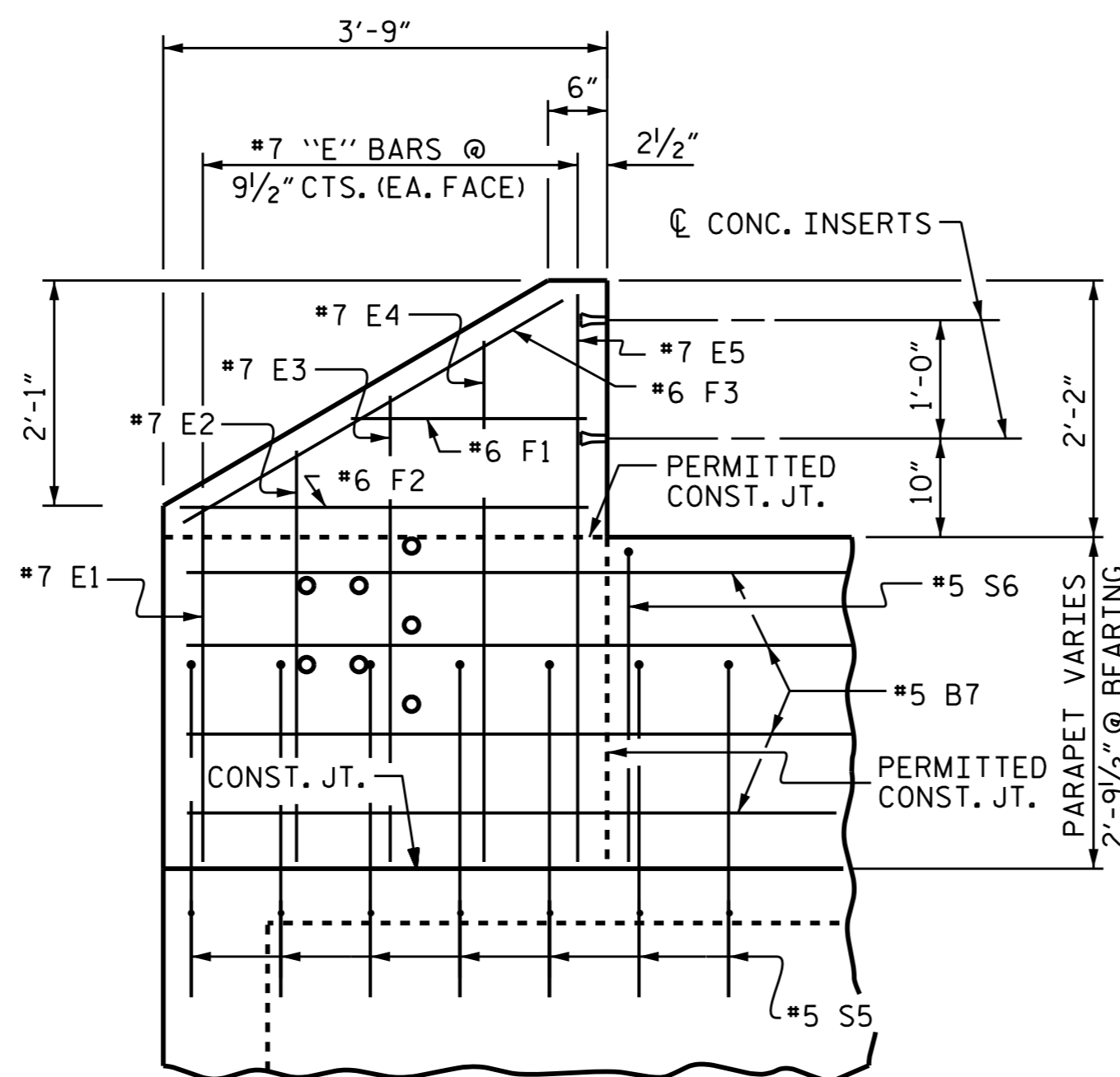


BAR TYPE		BILL OF MATERIAL				
2 PARAPETS & 4 END POSTS						
BAR	NO.	SIZE	TYPE	LENGTH	WEIGHT	
*B7	96	#5	STR	22'-11"	2295	
*B9	48	#5	STR	27'-11"	1398	
*E1	8	#7	STR	2'-11"	48	
*E2	8	#7	STR	3'-5"	56	
*E3	8	#7	STR	3'-11"	64	
*E4	8	#7	STR	4'-5"	72	
*E5	8	#7	STR	4'-9"	78	
*F1	8	#6	STR	1'-10"	22	
*F2	8	#6	STR	3'-0"	36	
*F3	8	#6	STR	3'-8"	44	
*S6	578	#5	10	5'-10"	3517	
* EPOXY COATED REINFORCING STEEL LBS.				7630		
CLASS AA CONCRETE				CU.YDS.	54.3	
TOTAL LIN. FT. OF CONCRETE PARAPET					450.5	

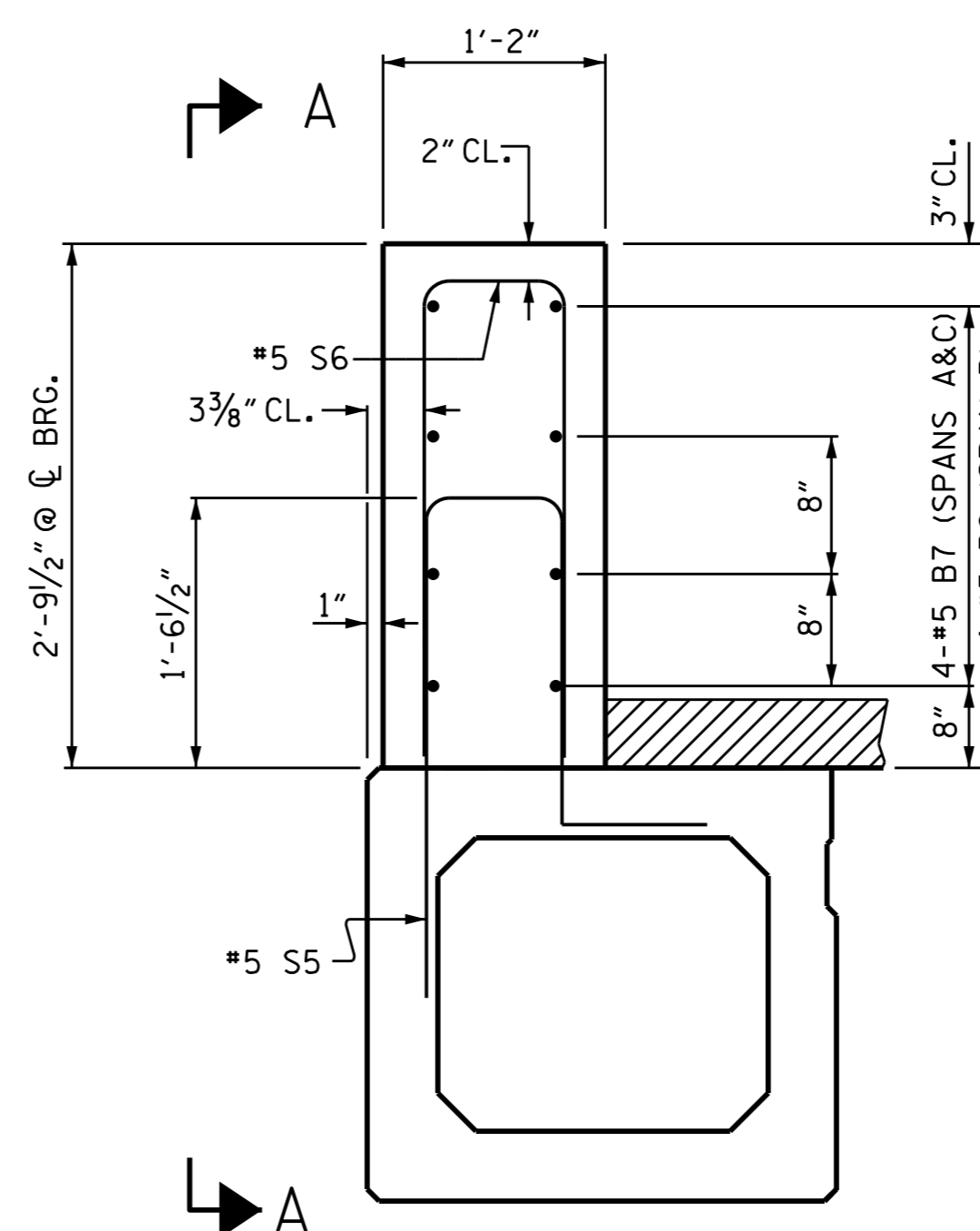
THE REINFORCING STEEL & CONCRETE IN THE END POSTS IS INCLUDED IN THE UNIT PRICE BID FOR THE CONCRETE PARAPET.



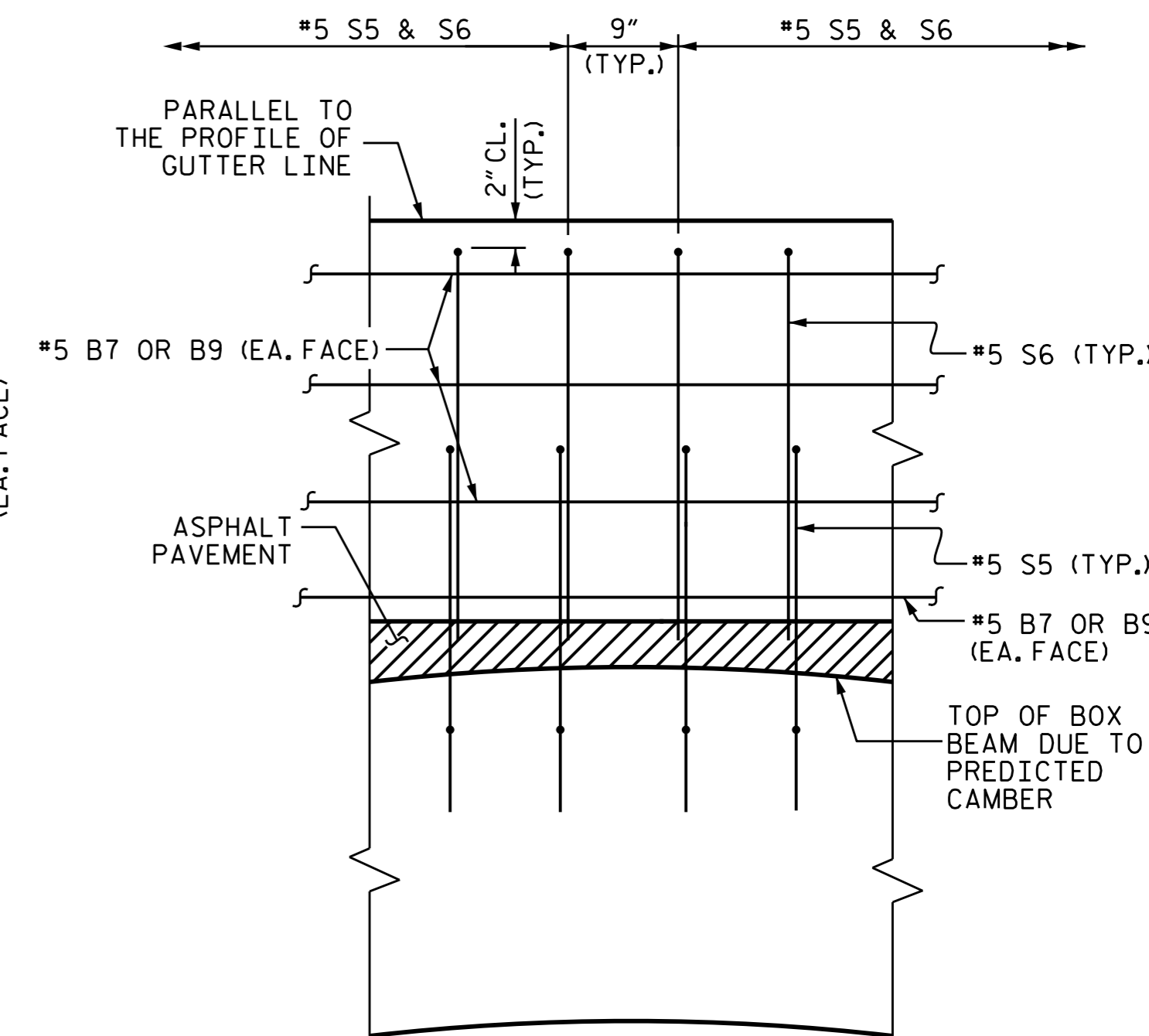
END VIEW



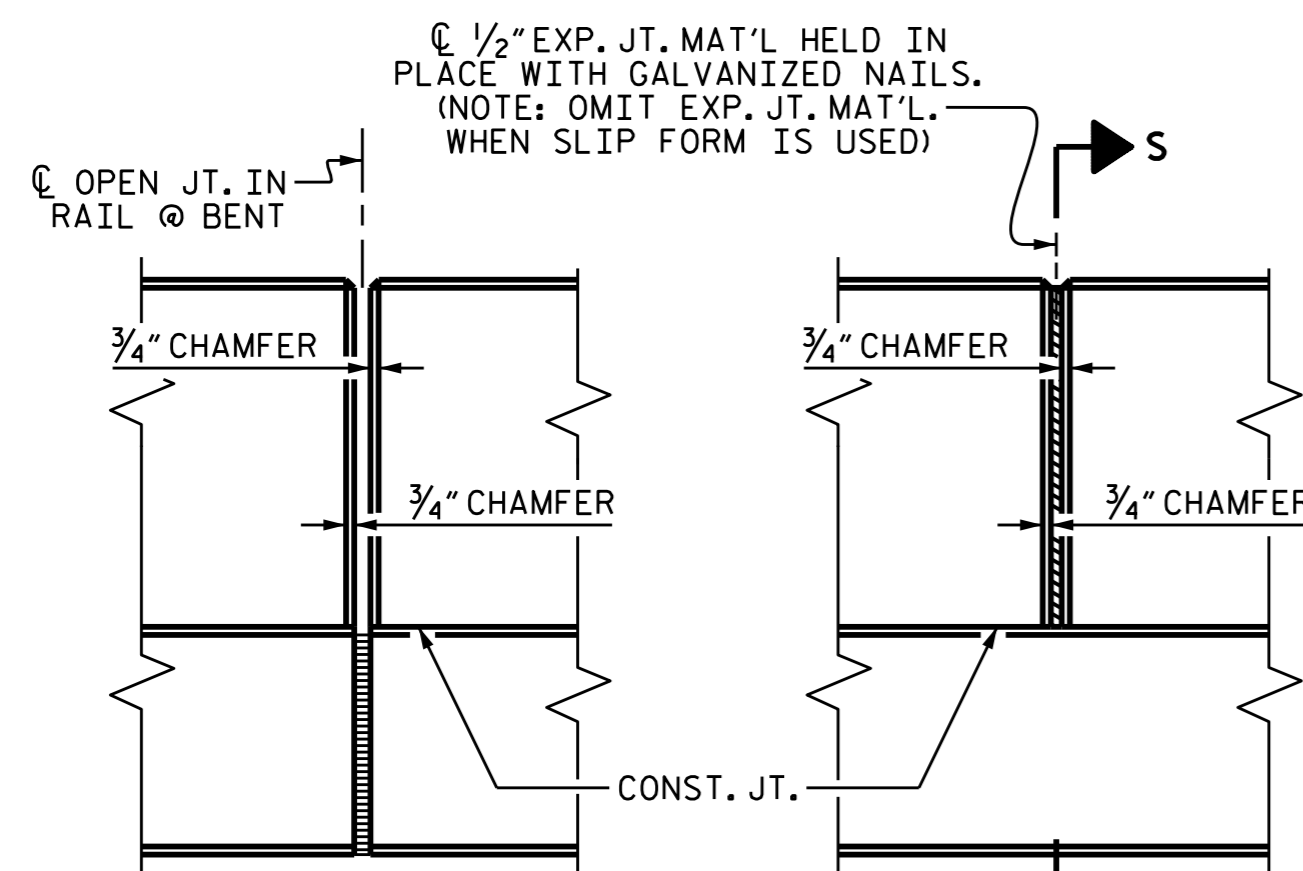
ELEVATION



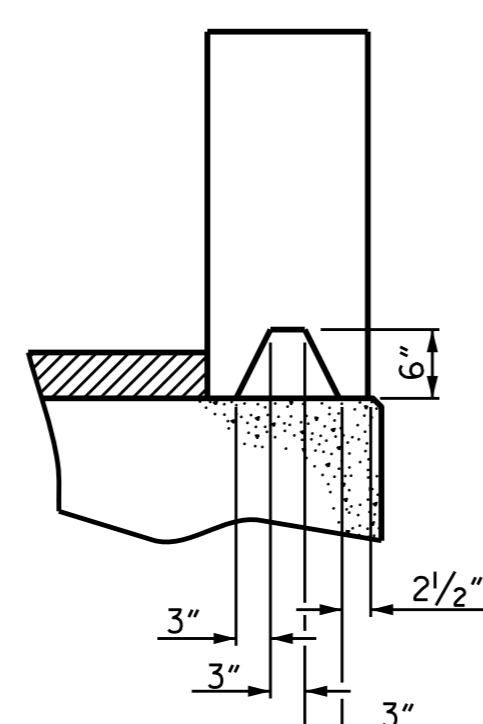
SECTION THRU PARAPET
SHOWN AT BEARING



VIEW A-A



ELEVATION AT EXPANSION JOINTS



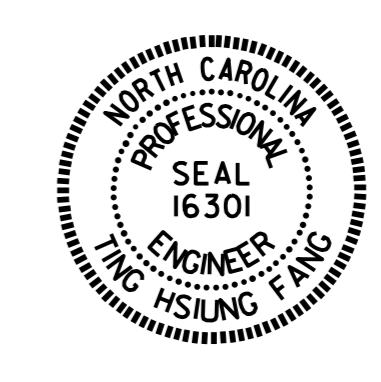
SECTION S-S
AT DAM IN OPEN JOINT
(THIS IS TO BE USED ONLY
WHEN SLIP FORM IS USED)

CONCRETE PARAPET DETAILS

FOR PLAN VIEW OF CONCRETE PARAPET, SEE "PLAN OF SPAN" SHEETS.

GUTTERLINE ASPHALT THICKNESS & PARAPET HEIGHT		
NORMAL CROWN	ASPHALT OVERLAY THICKNESS @ MID-SPAN	PARAPET HEIGHT @ MID-SPAN
70' UNITS (SPAN A)	3" *	2'-9"
85' UNITS (SPAN B)	2 5/16" *	2'-8 5/16"
70' UNITS (SPAN C)	3 1/8" *	2'-9 1/8"

* ASPHALT OVERLAY THICKNESS AT MID-SPAN REFLECTS THE EFFECTS OF THE VERTICAL CURVE.



DocuSigned by:
Ting Fang
E7208840097435
5/10/2016

PROJECT NO. B-4967
SCOTLAND & HOKE COUNTY
STATION: 16+74.50 -L-

STATE OF NORTH CAROLINA DEPARTMENT OF TRANSPORTATION RALEIGH					
STANDARD					
CONCRETE PARAPETS AND END POSTS					
REVISIONS					SHEET NO.
NO.	BY:	DATE:	NO.	BY:	DATE:
1			3		
2			4		
					S-14
					TOTAL SHEETS 23

DOCUMENT NOT CONSIDERED
FINAL UNLESS ALL
SIGNATURES COMPLETED

ASSEMBLED BY: E.I. OMILE DATE: 02-25-15
CHECKED BY: A. SORENGINH DATE: 05-18-15
DRAWN BY: TLA 5/05
CHECKED BY: GM 6/05
ADDED 7/11/05R TLA/GM
REV. 5/1/06RR MAA/GM
REV. 10/1/11