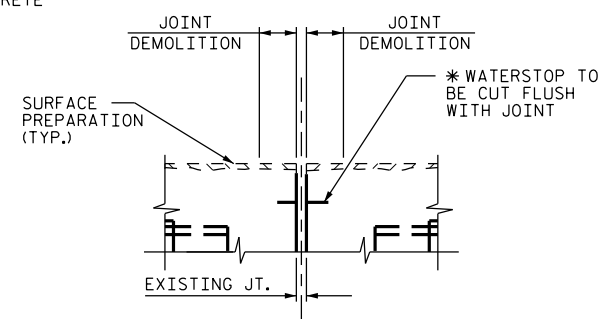
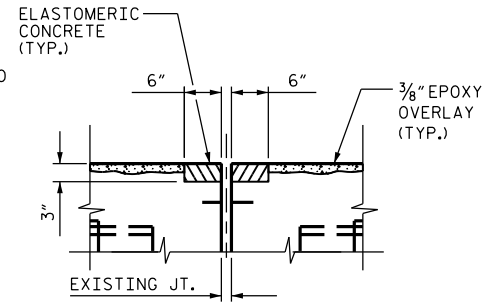


EXISTING JOINT

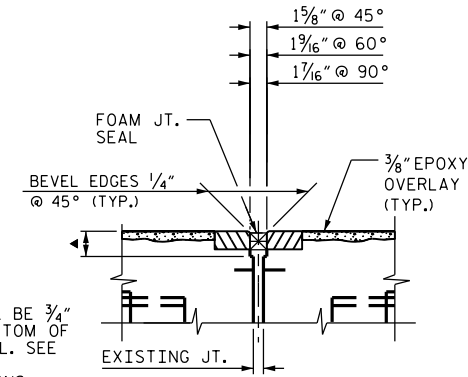


MINIMUM EXISTING JOINT DEMOLITION



PROPOSED JOINT PRE-SAW DIMENSIONS

▲ SAW CUT SHALL BE 3/4" BELOW THE BOTTOM OF THE JOINT SEAL. SEE MANUFACTURER RECOMMENDATIONS



PROPOSED FOAM JOINT SEAL EXPANSION ALL BENTS

NOTES:

CONTRACTOR SHALL FIELD VERIFY THE EXISTING FORMED OPENING PRIOR TO OBTAINING JOINT MATERIAL.

IF THE EMBEDDED PORTION OF THE EXISTING PLASTIC WATERSTOP IS EXPOSED DURING REMOVAL OF UNSOUND CONCRETE OR IF UNSOUND CONCRETE IS REMOVED TO WITHIN 2" OF THE WATERSTOP, THE ENTIRE WATERSTOP SHALL BE REMOVED.

HYDRO-DEMOLITION OR EXCAVATION OF CONCRETE AT THE EXISTING JOINT SHALL RESULT IN THE BOTTOM OF THE EXCAVATION BEING REASONABLY FLAT, TO PROVIDE SUFFICIENT SUBSTRATE FOR PLACEMENT AND SUPPORT OF ELASTOMERIC CONCRETE.

FOR FOAM JOINT SEALS, SEE SPECIAL PROVISIONS.

FOR ELASTOMERIC CONCRETE, SEE SPECIAL PROVISIONS.

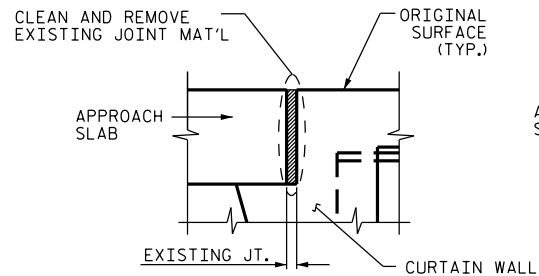
RETAIN ALL EXISTING REINFORCING STEEL, CLEAN AND REPAIR AS NEEDED.

THE WIDTH OF THE UNCOMPRESSED FOAM JOINT MATERIAL SHALL BE 2".

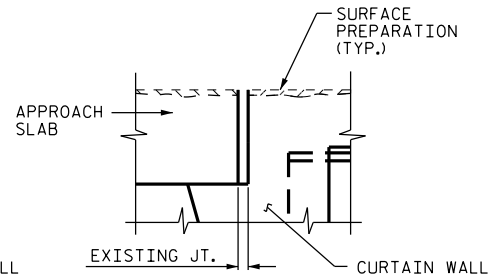
ELASTOMERIC CONCRETE	
BRIDGE 59	62.0 CU. FT.
BRIDGE 64	73.0 CU. FT.
* TOTAL	135.0 CU. FT.

* BASED ON THE MINIMUM BLOCKOUT SHOWN.

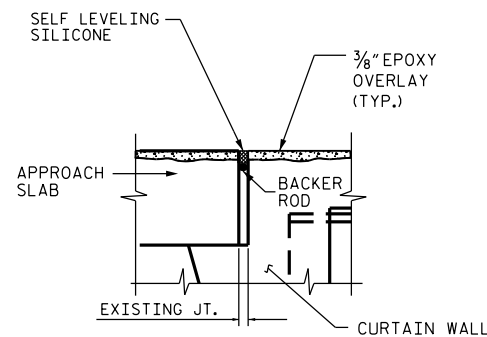
JOINT INSTALLATION SEQUENCE AT BENTS SECTION A-A



EXISTING COLD JOINT

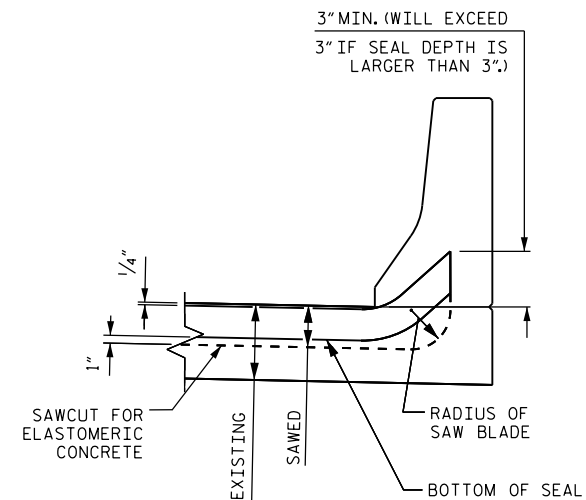


MINIMUM EXISTING JOINT DEMOLITION

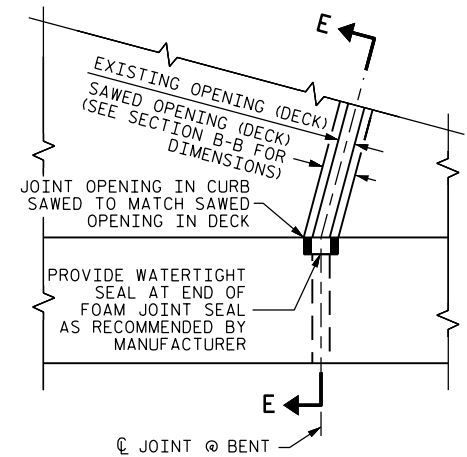


PROPOSED JOINT

JOINT INSTALLATION SEQUENCE AT END BENTS SECTION B-B



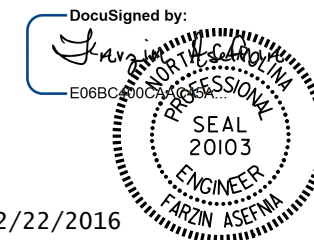
SECTION E-E JOINT SEAL DETAILS AT BENTS



PROJECT NO. I-5821
 GUILFORD COUNTY
 BRIDGE NO.: 59 & 64

STATE OF NORTH CAROLINA
 DEPARTMENT OF TRANSPORTATION
 RALEIGH

SUPERSTRUCTURE
 JOINT DETAILS



DRAWN BY : M.K. BEARD DATE : 1/13/16
 CHECKED BY : W.C. SMITH DATE : 1/20/16

REVISIONS		SHEET NO.
NO.	DATE	
1		S-6 TOTAL SHEETS 6
2		