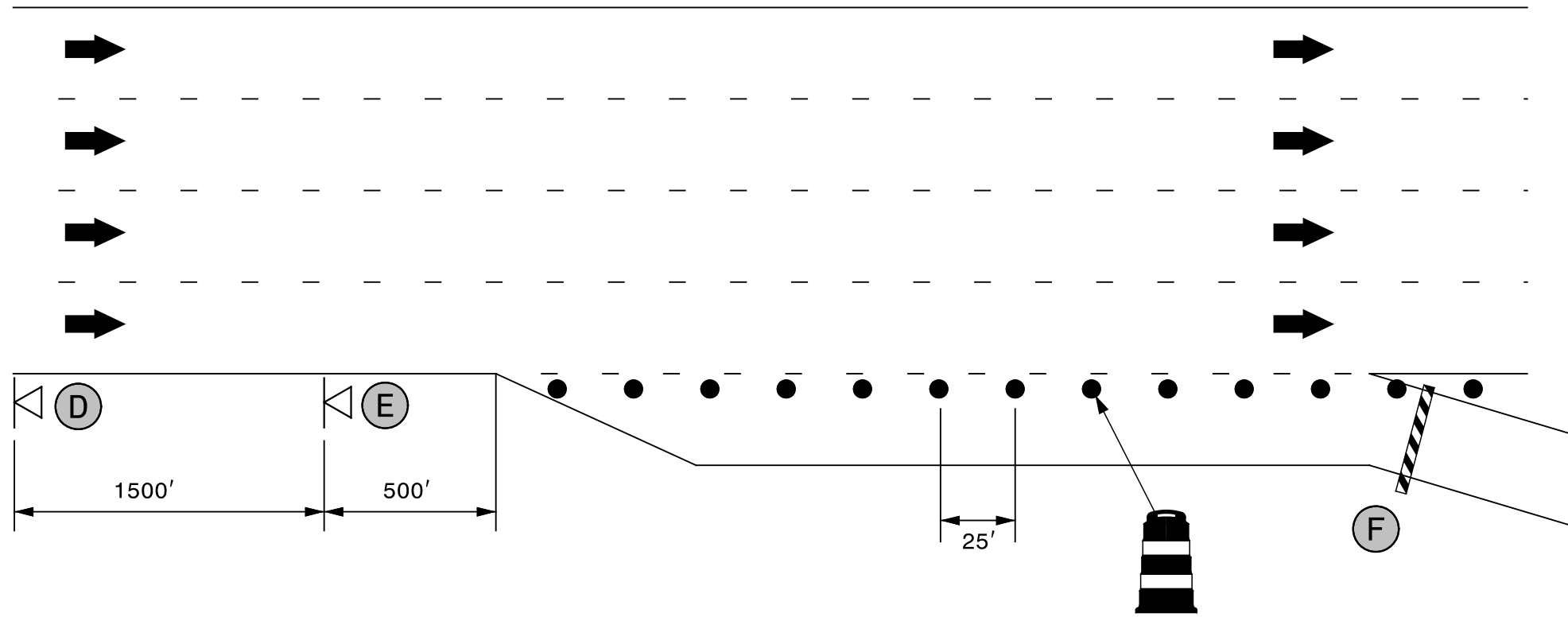
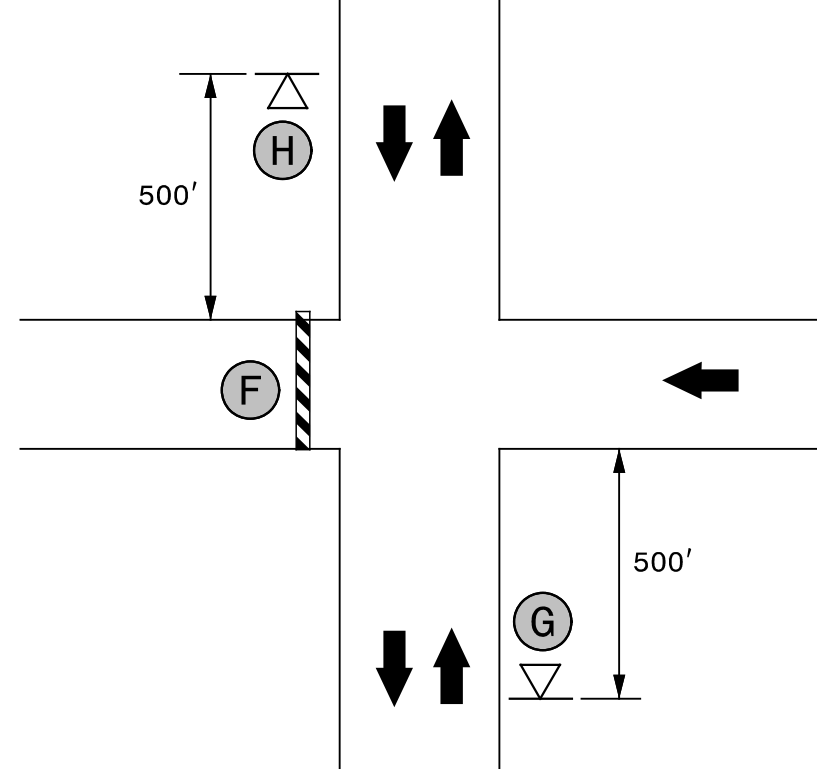


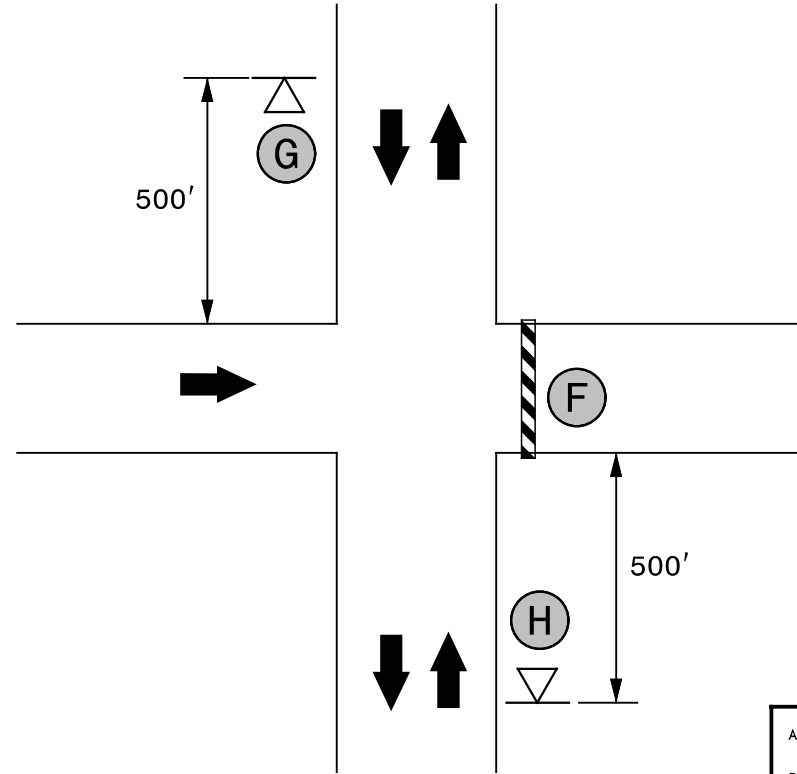
RAMP A, RAMP C CLOSURE



RAMP B, LOOP C CLOSURE



RAMP D CLOSURE



NOTE: SEE TMP-2 FOR SIGN LEGEND

3/10/2016
G:\Tr\off\I-5789 & I-5821 TMP\TMP\I-5789_5821 TMP-7.dgn
jwiles

SEPI
ENGINEERING & CONSTRUCTION

1025 Wade Avenue
Raleigh, NC 27605
Tel: 919-789-9977
Fax: 919-789-9591
License: C-2197

DocuSigned by:
Steve Miller

APPROVED: *Steve Miller*
DATE: 3/10/2016

SEAL

DOCUMENT NOT CONSIDERED FINAL
UNLESS ALL SIGNATURES COMPLETED



DIVISION OF HIGHWAYS
STATE OF NORTH CAROLINA
DEPARTMENT OF TRANSPORTATION
WORK ZONE TRAFFIC CONTROL

RAMP CLOSURE TYPICAL