

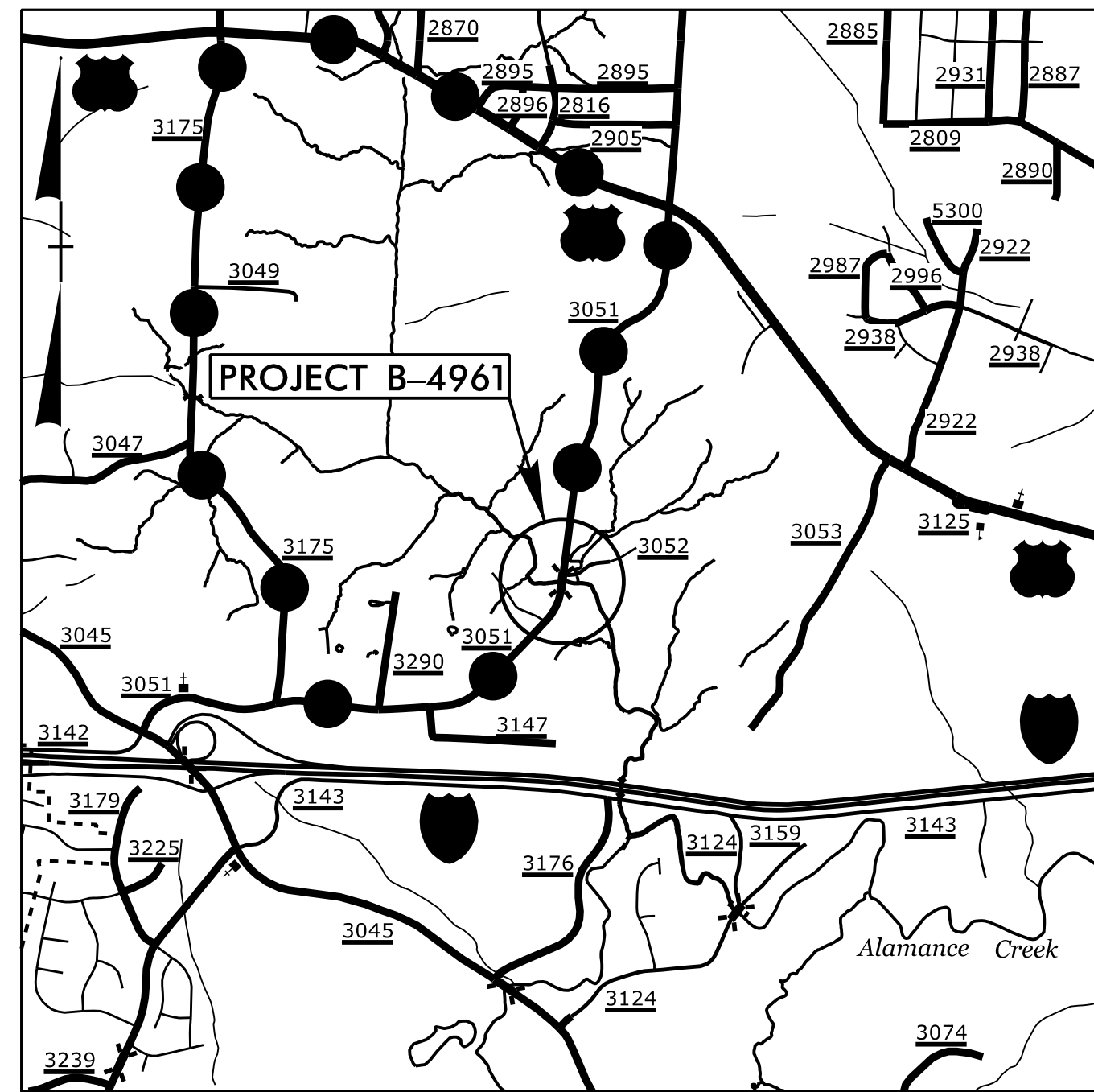
**This electronic collection of documents is provided  
for the convenience of the user  
and is Not a Certified Document –**

**The documents contained herein were originally issued  
and sealed by the individuals whose names and license  
numbers appear on each page, on the dates appearing  
with their signature on that page.**

**This file or an individual page  
shall not be considered a certified document.**

**TIP PROJECT: B-4961**

See Sheet 1A For Index of Sheets  
See Sheet 1B For Conventional Plan Sheet Symbols  
See Sheet 1C-1 For Survey Control Sheet



**VICINITY MAP**

●—●—● OFFSITE DETOUR

**SO-DEEP** The Subsurface Utility Engineering Company  
© U.S., P.C.  
2800-154 Sumner Blvd., Raleigh, NC 27616 (919) 878-7466

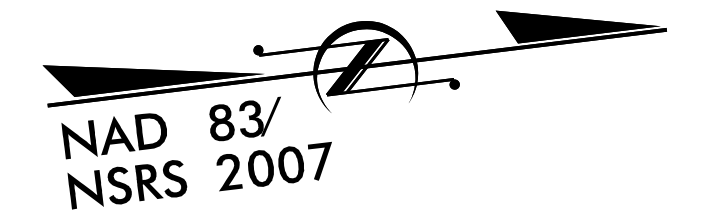
STATE OF NORTH CAROLINA  
DIVISION OF HIGHWAYS

**GUILFORD COUNTY**

LOCATION: BRIDGE NO. 208 ON SR 3051 (KNOX ROAD)  
OVER LITTLE ALAMANCE CREEK (TRIBUTARY 5)

**UTILITIES BY OTHERS**

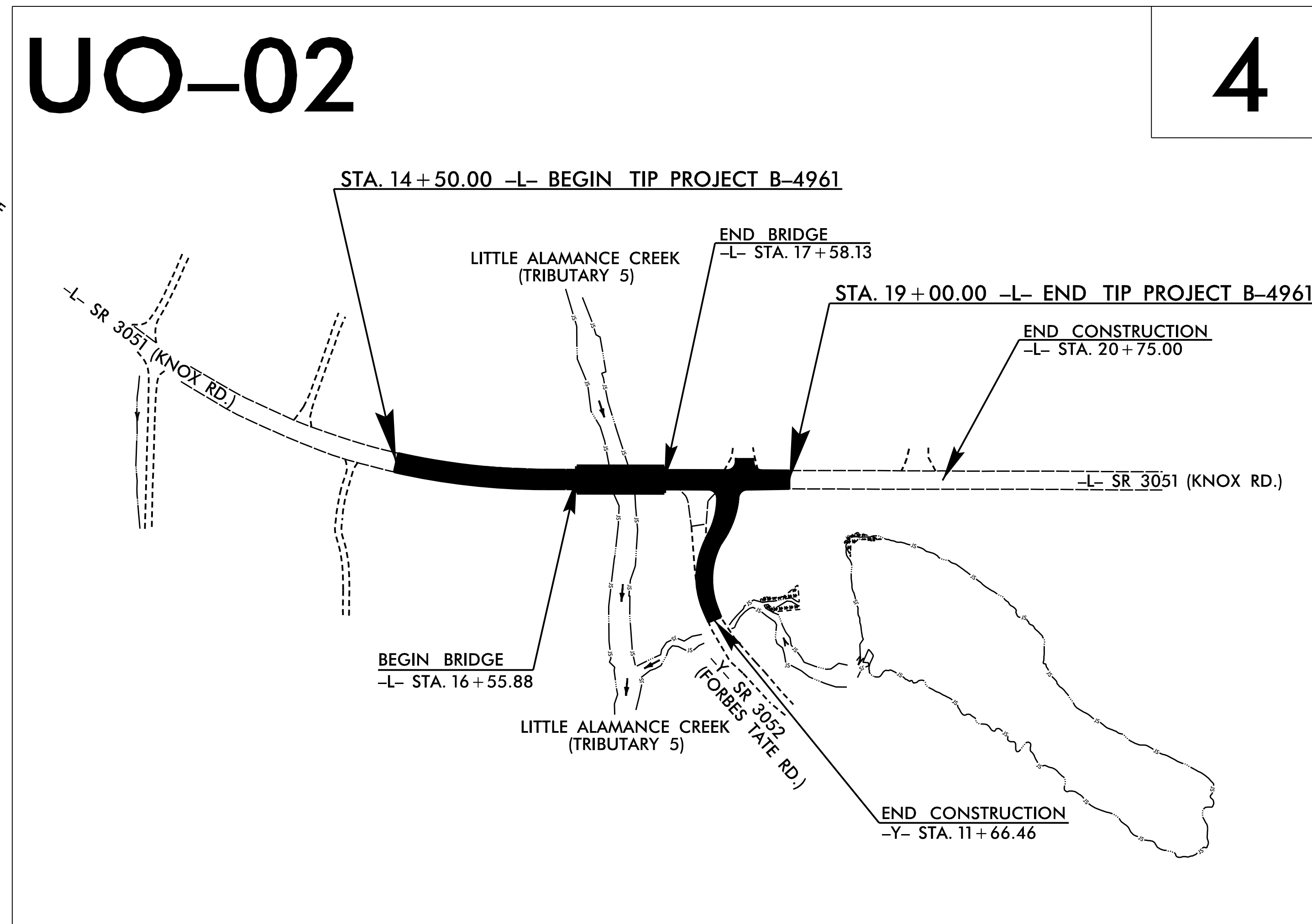
T.I.P. NO.	SHEET NO.
B-4961	UO-01



**UO-02**

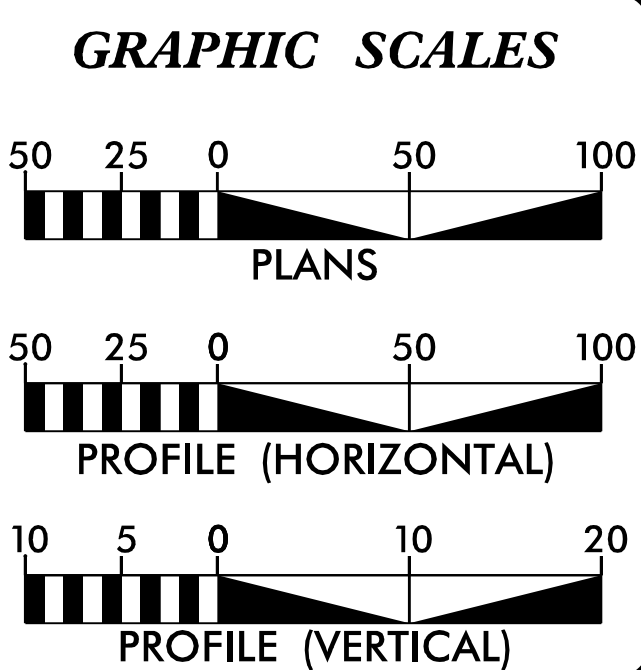
**4**

TO MT. HOPE  
CHURCH ROAD



TO BURLINGTON RD.  
(HWY 70)

**CONTRACT:**



**INDEX OF SHEETS**

SHEET NO.	DESCRIPTION
UO-01	TITLE SHEET
UO-02	UBO PLAN SHEETS

**UTILITY OWNERS ON PROJECT**

(A) DUKE ENERGY PROGRESS - POWER (DISTRIBUTION)  
(B) AT&T - COMMUNICATIONS

PREPARED IN THE OFFICE OF:  
DIVISION OF HIGHWAYS  
UTILITIES UNIT  
UTILITIES ENGINEERING

1555 MAIL SERVICES CENTER  
RALEIGH, NC 27699-1555  
PHONE (919) 307-6690  
FAX (919) 250-4151

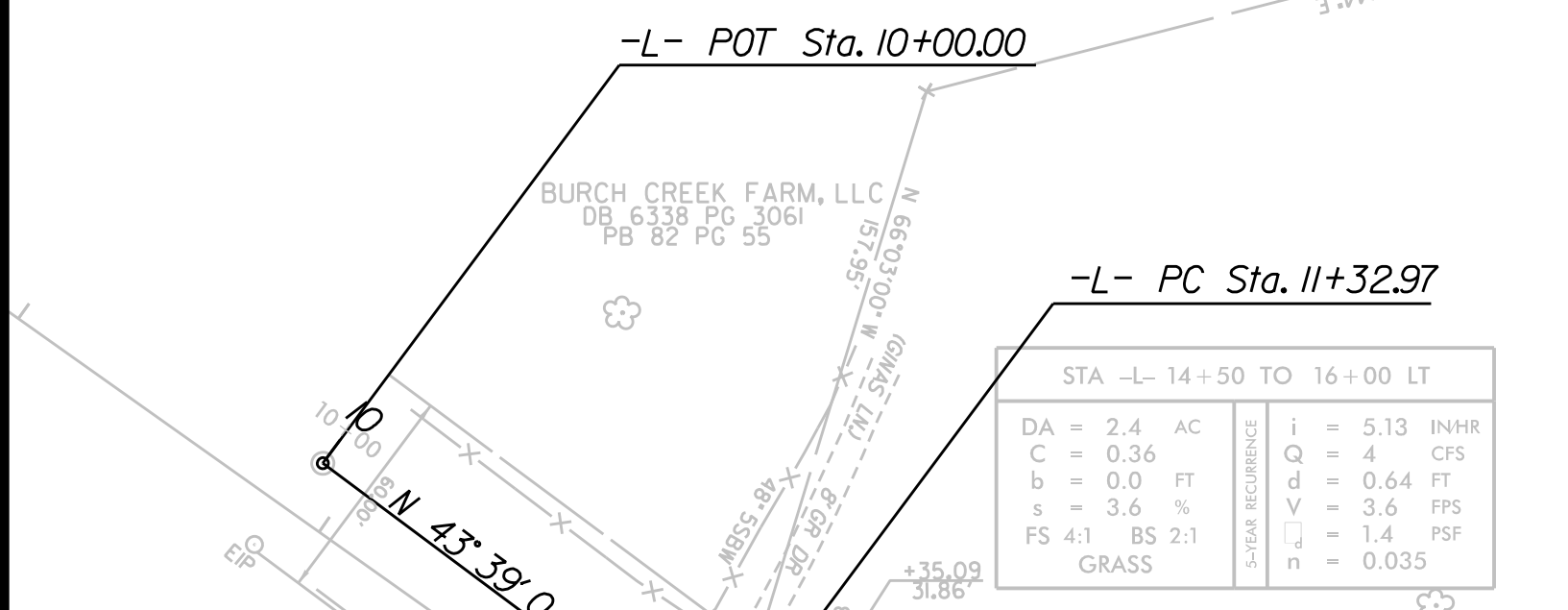
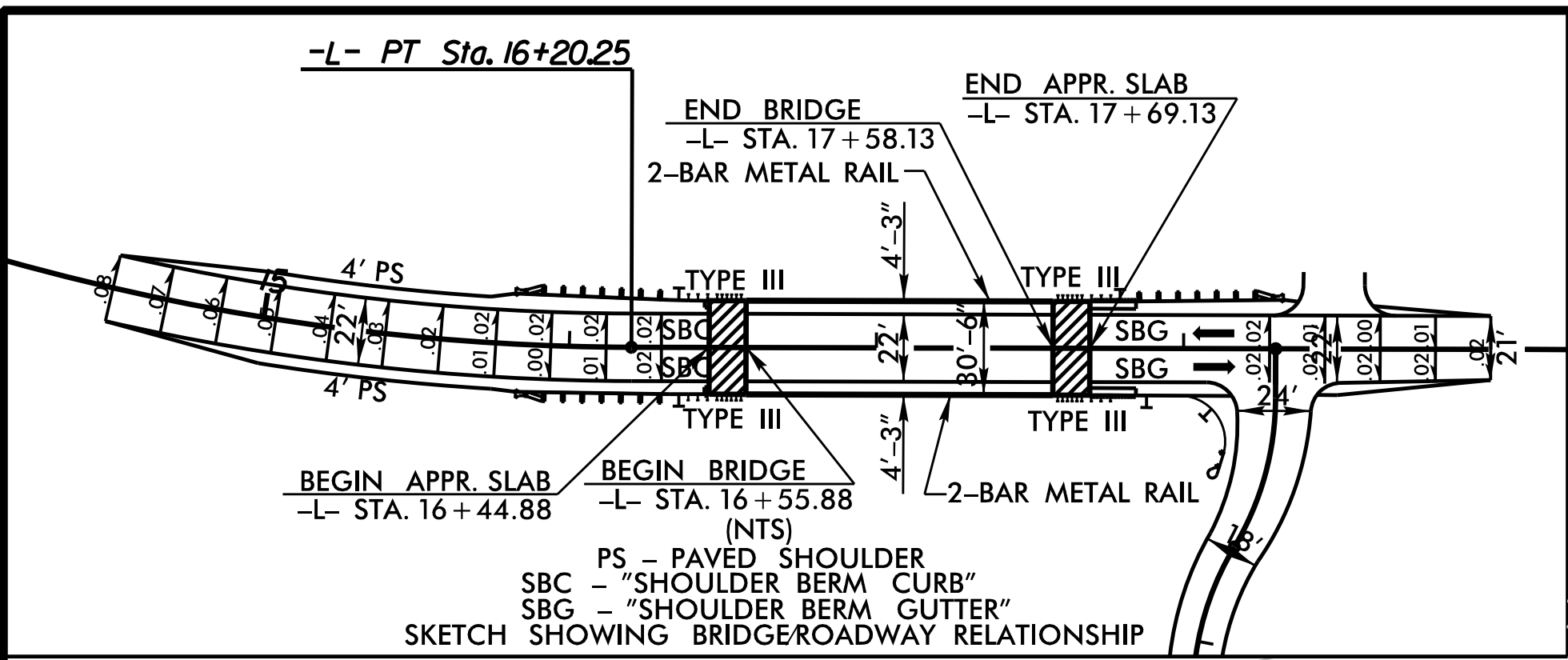
Roger Worthington, P.E. UTILITIES SECTION ENGINEER  
Donna Jackson, P.E. UTILITIES SQUAD LEADER PROJECT ENGINEER  
Jong-Tae Yoon, P.E. UTILITIES PROJECT DESIGNER

### UTILITIES BY OTHERS

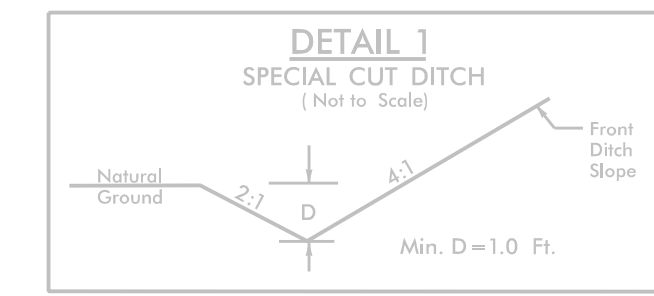
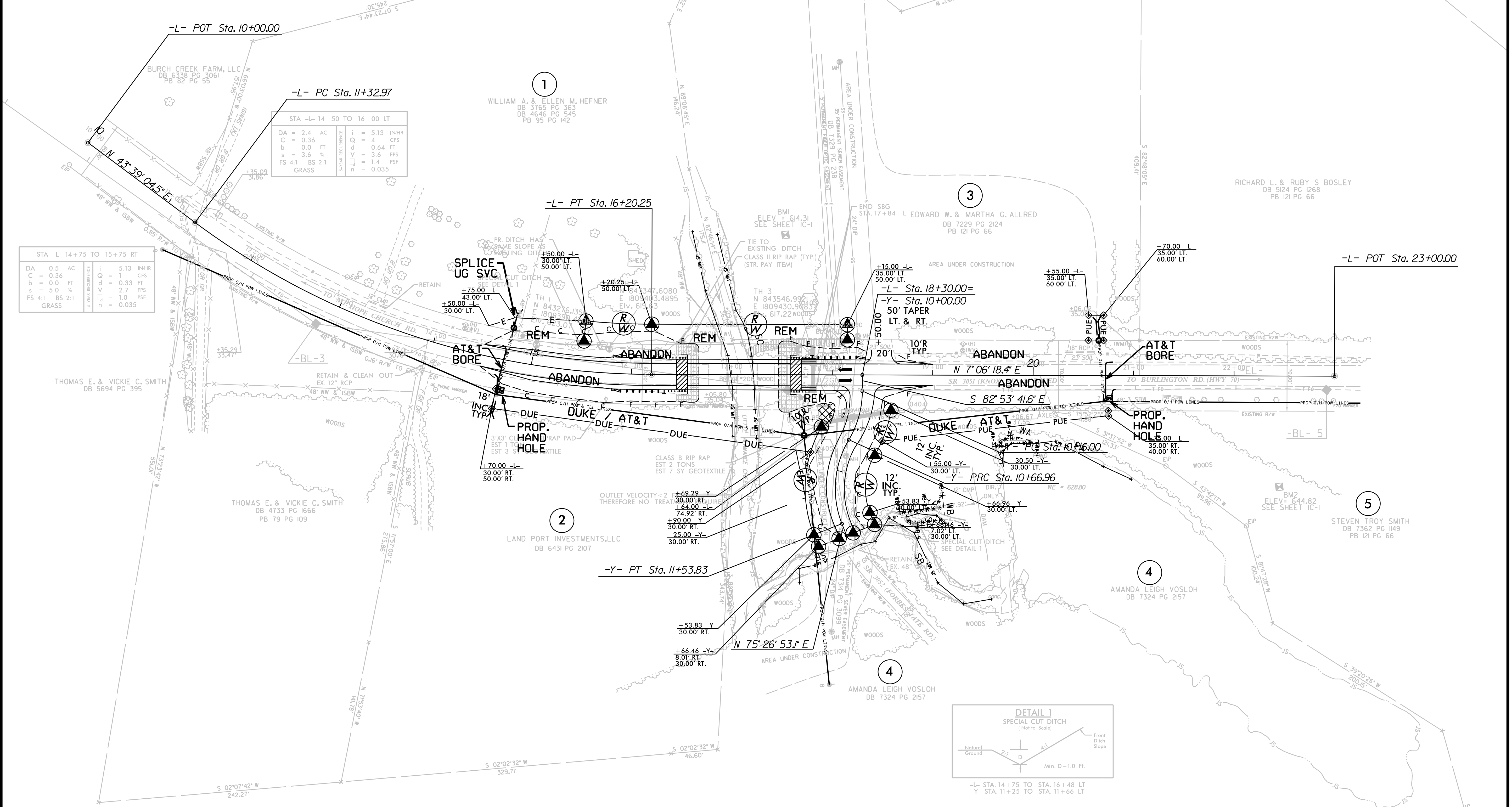
NOTE:  
ALL PROPOSED UTILITY WORK SHOWN ON THIS SHEET WILL BE DONE BY OTHERS. NO PAYMENT WILL BE MADE TO THE CONTRACTOR FOR PROPOSED UTILITY WORK SHOWN ON THIS SHEET.

-L-	-Y-
PI Sta 13+85.22	PI Sta 10+42.11
$\Delta = 36^\circ 32' 46.1''$ (LT)	$\Delta = 30^\circ 44' 03.9''$ (RT)
$D = 7^\circ 30' 00.0''$	$D = 60^\circ 18' 33.7''$
$L = 487.28'$	$L = 50.96'$
$T = 252.25'$	$T = 26.11'$
$R = 763.94'$	$R = 95.00'$
SE = SEE PLANS	SE = SEE PLANS

NAD 83/NSRS 2007



STA -L- 14+75 TO 15+75 RT	i = 5.13 INHR
DA = 0.5 AC	Q = 1 CFS
C = 0.36	d = 0.33 FT
b = 0.0 FT	v = 2.7 FPS
s = 5.0 %	r = 1.0 PSF
FS 4:1 BS 2:1	n = 0.035
GRASS	



NOTE: PAVED SHOULDER TRANSITION FROM -L- STA. 14+50.00 TO 15+00.00 AND -L- STA. 18+50.00 TO 19+00.00

SEE SHEET 5 FOR -L- AND -Y- PROFILE AND SHEETS S-1 THRU S-2 FOR STRUCTURE PLANS

REVISIONS