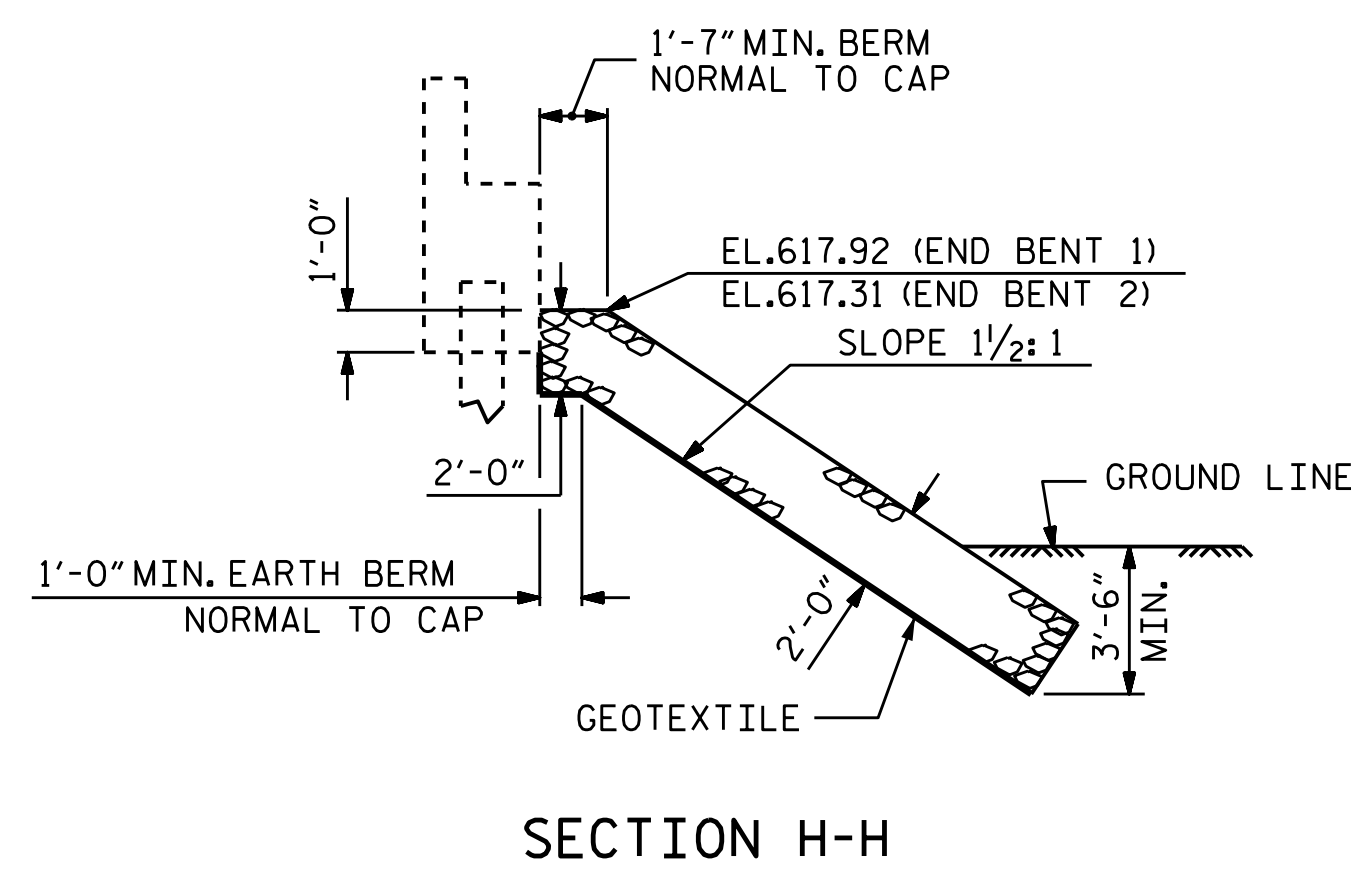
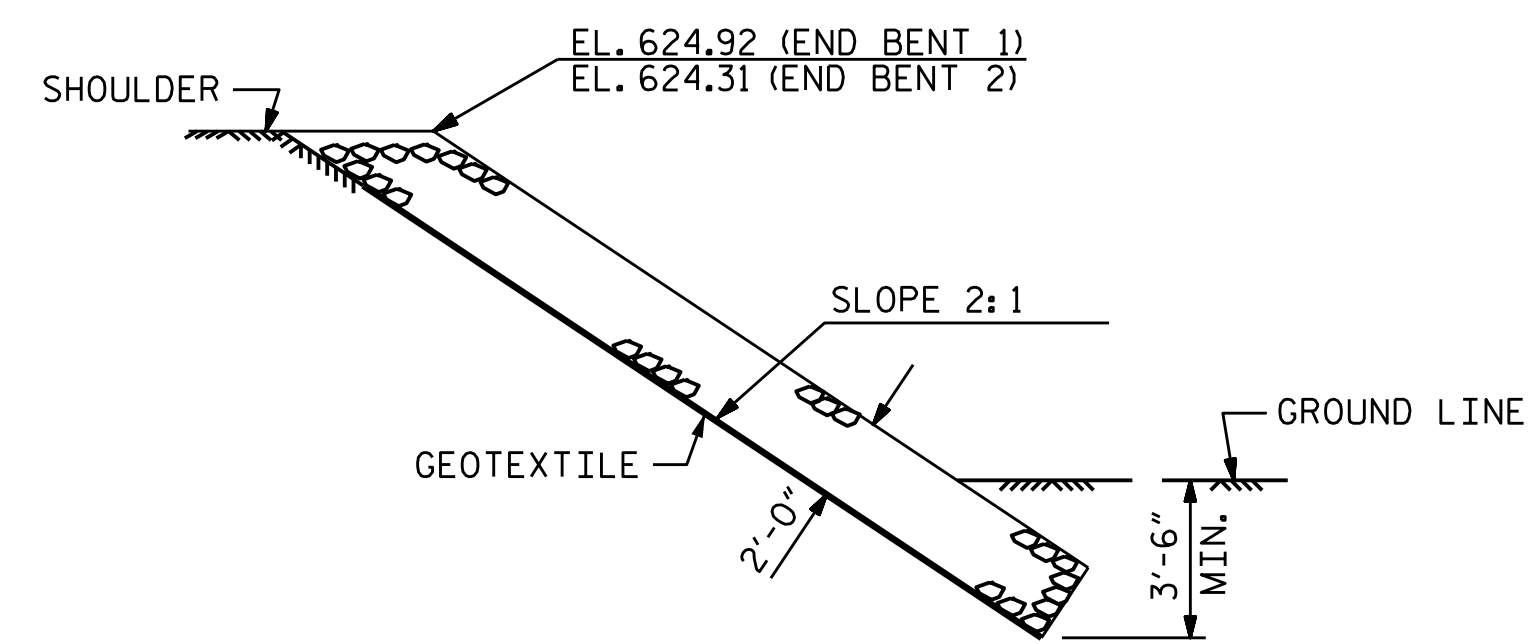


PLAN

ESTIMATED QUANTITIES		
BRIDGE @ STA. 17+07.00 -L-	RIP RAP CLASS II (2'-0" THICK)	GEOTEXTILE FOR DRAINAGE
	TONS	SQUARE YARDS
END BENT 1	140	155
END BENT 2	125	140



SECTION H-H



SECTION C-C

PROJECT NO. B-4961
GUILFORD COUNTY
 STATION: 17+07.00 -L-



STATE OF NORTH CAROLINA
 DEPARTMENT OF TRANSPORTATION
 RALEIGH
 STANDARD
 = RIP RAP DETAILS =

ASSEMBLED BY : REZA KOUICHEKI DATE : 9/13/15
 CHECKED BY : K.P. SEDA DATE : 10/9/15
 DRAWN BY : REK 1/84
 CHECKED BY : RDU 1/84

REV. 5/1/06R TLA/GM
 REV. 10/1/11 MAA/GM
 REV. 12/21/11 MAA/GM

DOCUMENT NOT CONSIDERED
 FINAL UNLESS ALL
 SIGNATURES COMPLETED

REVISIONS						SHEET NO. S-18
NO.	BY:	DATE:	NO.	BY:	DATE:	
1			3			TOTAL SHEETS 19
2			4			