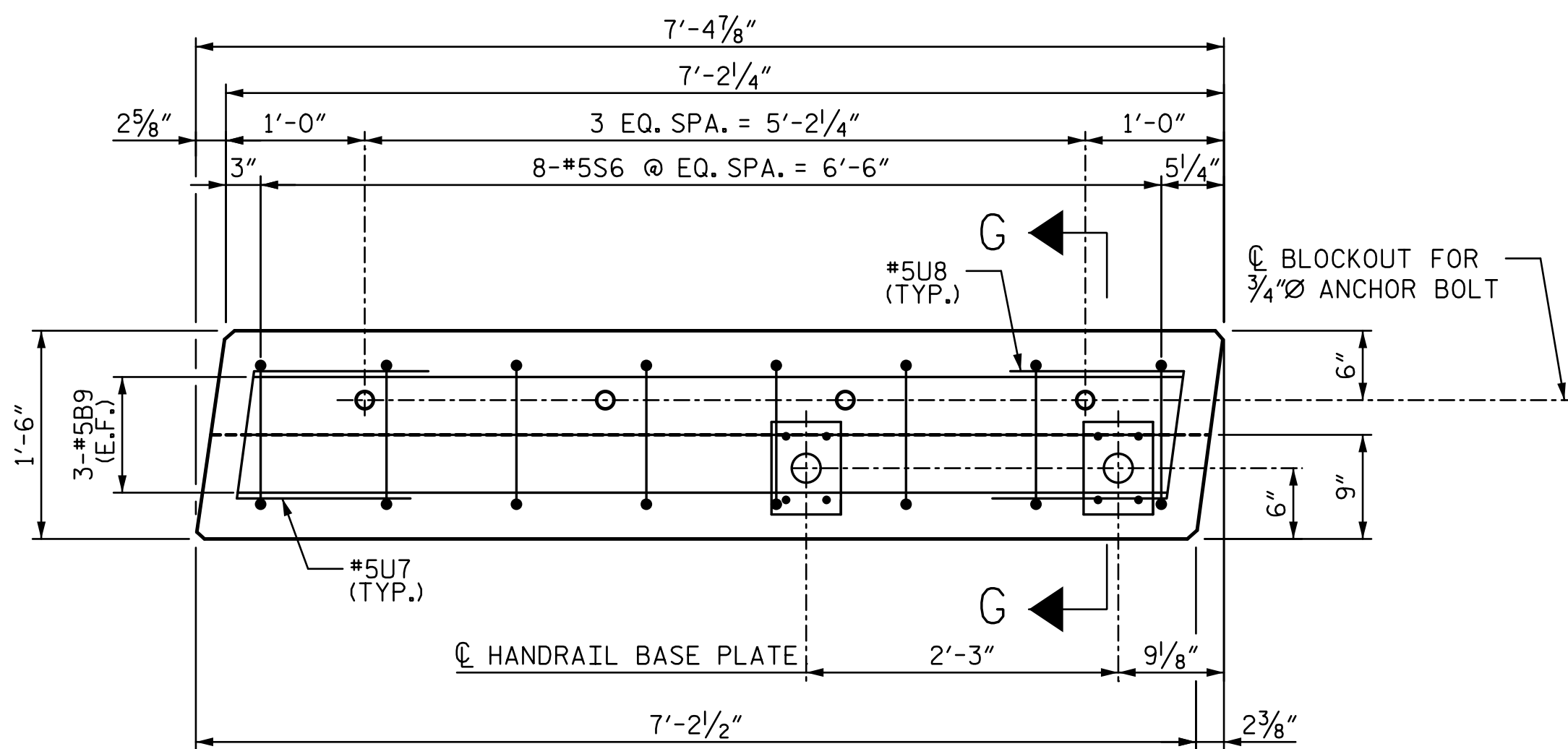
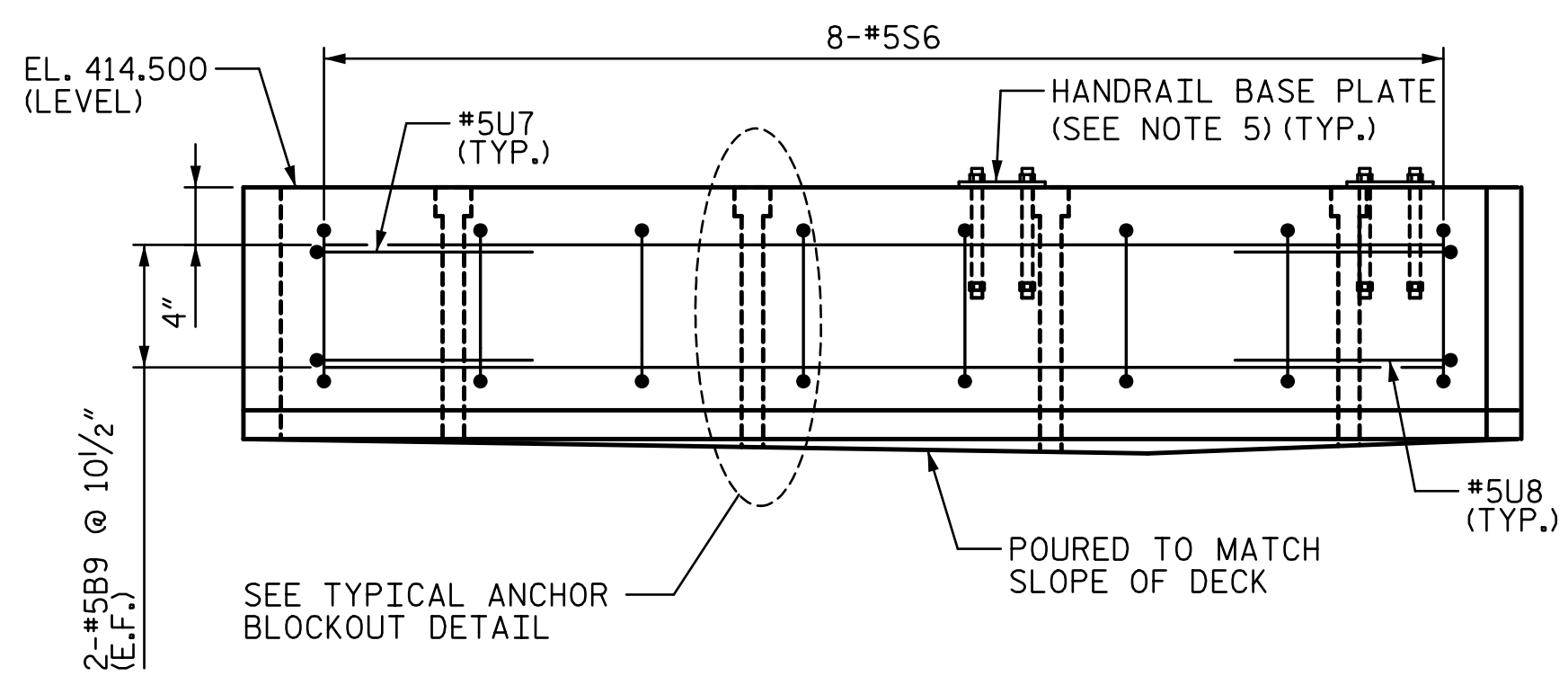


i:\PROJ\2513251\ustation\struc\Temporary_Span\404_061_U3308_SML_TS10.dgn 4/29/2016 12:32:56 PM

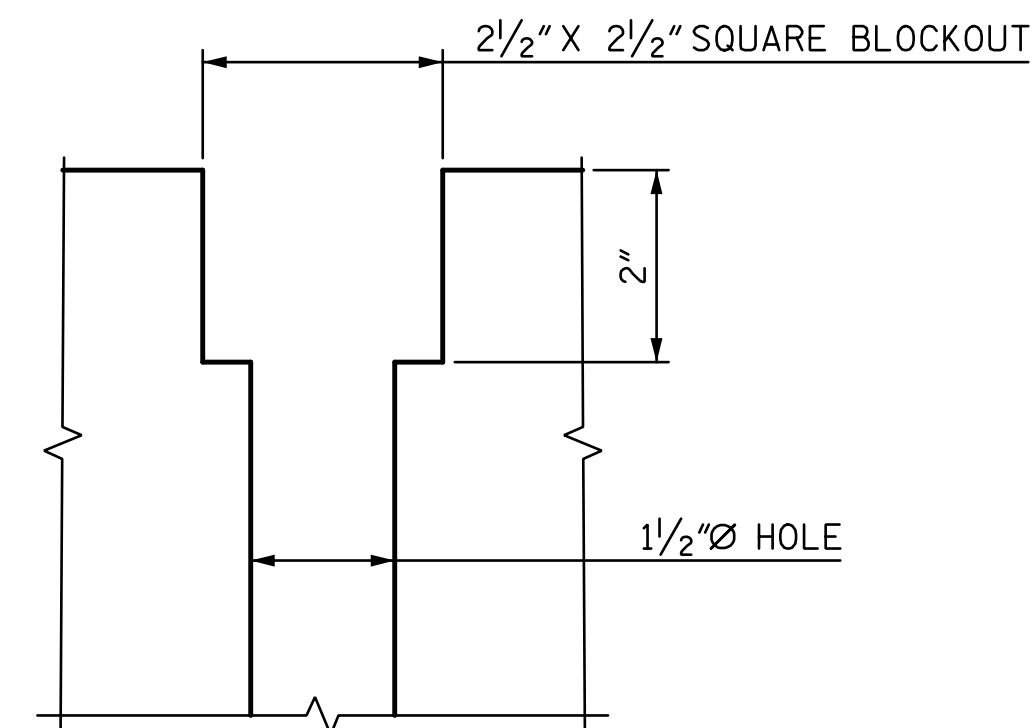


PLAN

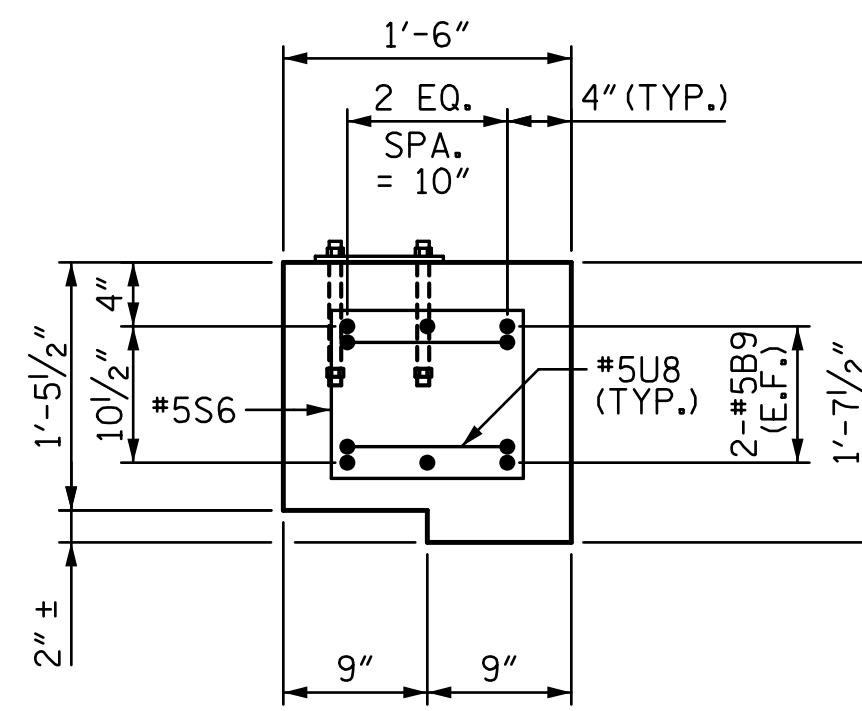


ELEVATION

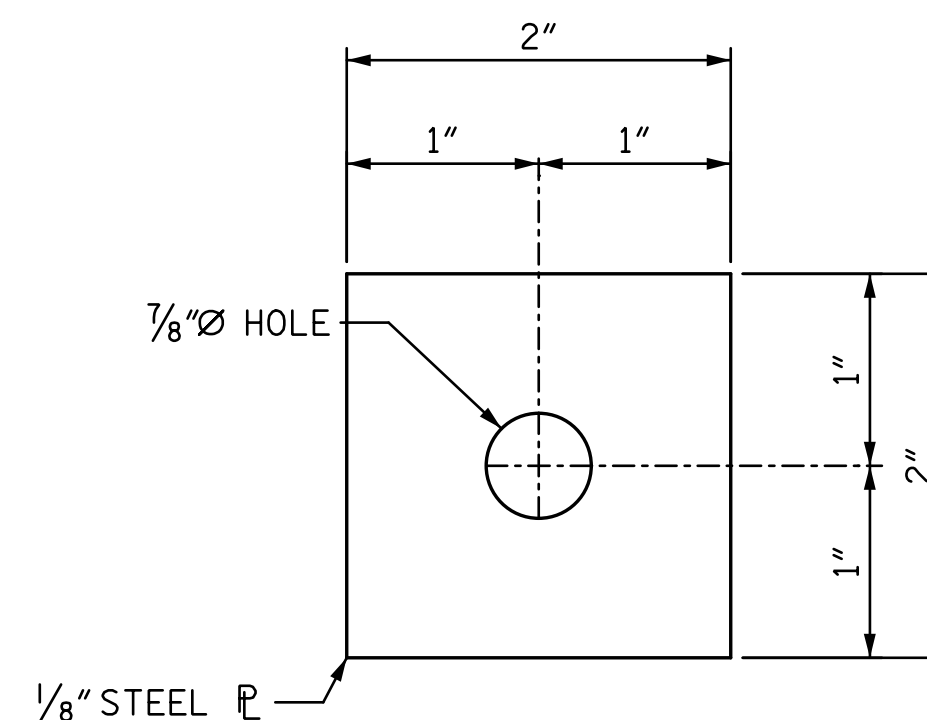
CONCRETE BALLAST CURB MK. C6



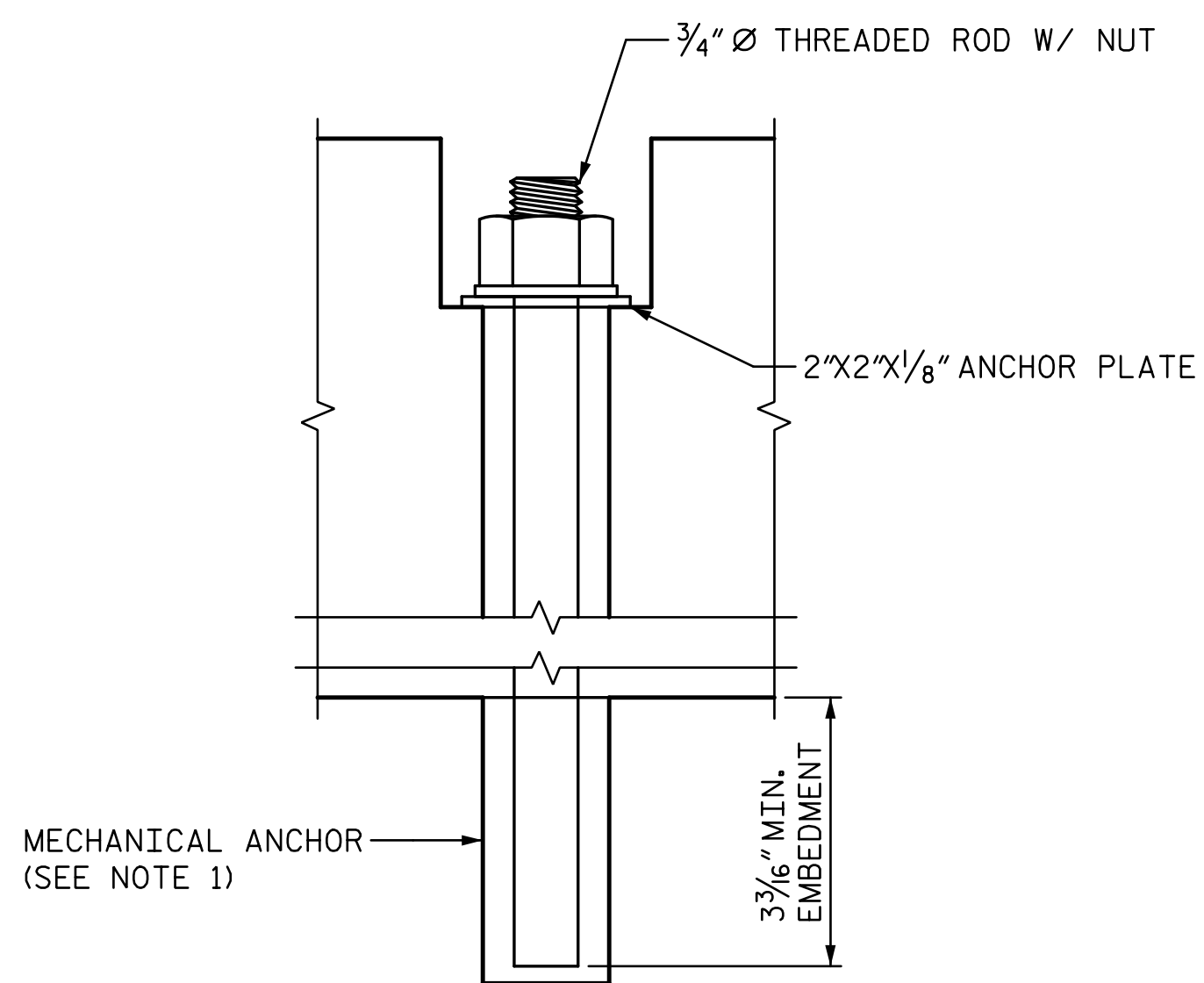
TYPICAL ANCHOR BLOCKOUT DETAIL



SECTION G-G



ANCHOR PLATE



ANCHOR BOLT DETAIL

NOTES:

- ALL BLOCKOUT HOLES PASS THROUGH FULL DEPTH OF PEDESTAL OR BALLAST CURB.
- PREFORMED 1/2" Ø HOLES FOR ANCHOR BOLTS SHALL BE FORMED WITH PERMANENT CORRUGATED METAL DUCTS MADE FROM 26 GAUGE STRIP STEEL CONFORMING TO ASTM A 65M, G90 COATING WEIGHT, OR APPROVED EQUAL.
- SEE SHEET TITLED "TEMPORARY CONCRETE PEDESTAL AND BALLAST RETAINER (4 OF 4) FOR ANCHOR BOLT DETAIL.
- CONTRACTOR MAY ADJUST REINFORCEMENT SLIGHTLY AS NECESSARY TO AVOID BLOCKOUTS AND HANDRAIL BASE PLATE/ANCHOR BOLTS.
- ANCHOR RODS FOR BASE PLATE SHALL BE CAST-IN-PLACE WITH THE BALLAST CURB. FOR BASE PLATE AND ANCHOR RODS DETAILS, SEE SHEET TITLED "HANDRAIL DETAILS".
- FOR HANDRAIL DETAILS, SEE SHEETS TITLED "TEMPORARY CONCRETE PEDESTAL AND BALLAST RETAINER (1 OF 4)" AND "HANDRAIL DETAILS".
- CHAMFER EDGES 3/4" X 3/4".
- 3" COVER U.N.O.
- FOR MECHANICAL ANCHOR, USE 3/4" Ø RED HEAD MULTI-STEP II DROP-IN ANCHOR, OR APPROVED EQUAL. MECHANICAL ANCHORS SHALL BE INSTALLED PER MANUFACTURER RECOMMENDATIONS.

REINFORCING BAR SCHEDULE

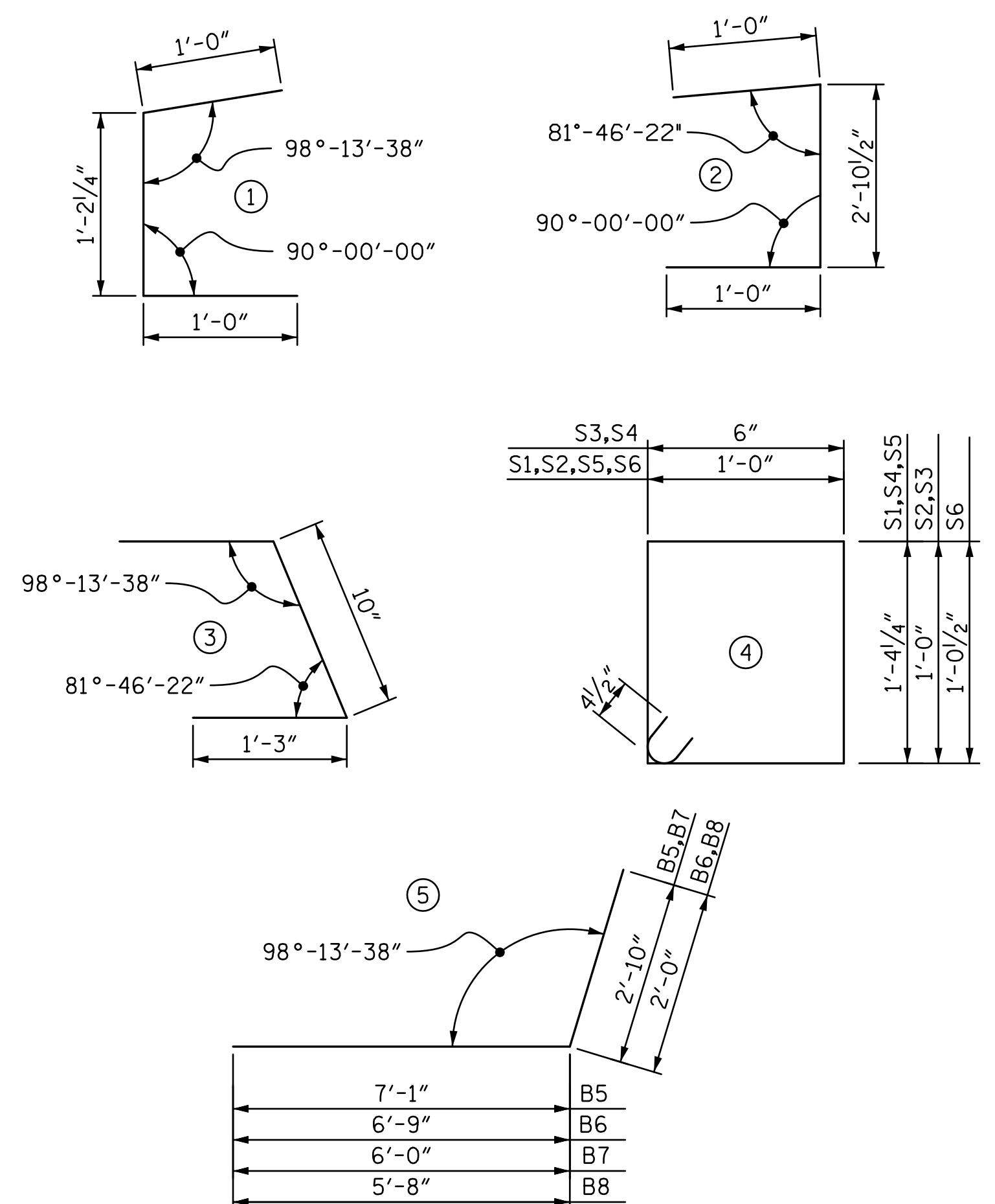
TEMPORARY BALLAST RETAINER

MARK	NO.	SIZE	TYPE	LENGTH (ft. in.)	WEIGHT (lb.)
A1	2	6	STR.	1'-4"	4
A2	2	6	STR.	1'-5"	4
A3	2	6	STR.	1'-7"	5
A4	2	6	STR.	1'-9"	5
A5	2	6	STR.	1'-11"	6
A6	2	6	STR.	2'-0"	6
A7	2	6	STR.	2'-2"	7
A8	2	6	STR.	2'-3"	7
A9	2	6	STR.	2'-6"	7
A10	2	6	STR.	2'-7"	8
A11	2	6	STR.	2'-9"	8
B1	4	6	STR.	11'-8"	71
B2	2	6	STR.	5'-11"	18
B3	2	6	STR.	11'-6"	35
B4	8	5	STR.	5'-7"	47
B5	2	6	5	9'-11"	30
B6	2	6	5	8'-9"	26
B7	2	6	5	8'-10"	27
B8	2	6	5	7'-8"	23
B9	6	5	STR.	6'-8"	42
S1	7	5	4	5'-6"	40
S2	8	5	4	4'-9"	40
S3	3	5	4	3'-9"	12
S4	3	5	4	4'-6"	14
S5	7	5	4	5'-6"	40
S6	8	5	4	4'-10"	40
U1	2	5	1	3'-2"	7
U2	2	5	2	4'-11"	10
U3	3	5	3	3'-4"	10
U4	3	5	3	3'-4"	10
U5	2	5	3	3'-4"	7
U6	2	5	3	3'-4"	7
U7	2	5	3	3'-4"	7
U8	2	5	3	3'-4"	7

BILL OF MATERIAL

COMPONENT MK.	CIP CONCRETE (C.Y.)	REINFORCING STEEL (LBS.)
C1	0.9	104
C2	0.9	104
C3	0.7	107
C4	0.8	115
C5	0.8	111
C6	0.7	96
TOTAL	4.8	637

BAR TYPES



ALL BAR DIMENSIONS ARE OUT TO OUT.

TOTAL QUANTITIES

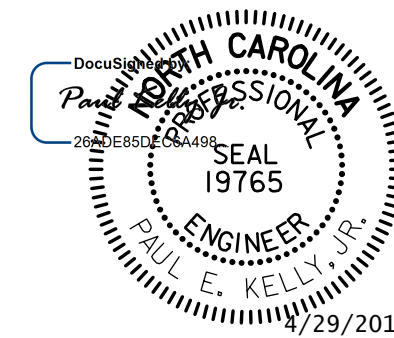
ITEMS	UNIT	QUANTITY
CIP CONCRETE (5,000 PSI)	C.Y.	4.8
REINFORCING STEEL (60,000 PSI)	LBS.	637
1/8" STEEL PLATE	EA.	29
3/4" Ø THREADED ROD AND MECHANICAL ANCHOR ASSEMBLY	EA.	29
HANDRAIL	LIN. FT.	8.3
HANDRAIL BASE PLATE ASSEMBLY	EA.	8
1/2" ELASTOMERIC PAD	SQ. FT.	60.8

PROJECT NO. U-3308
 DURHAM COUNTY

STATION: 24+55.20 -LALT-
13+22.18 -CSXN-

SHEET 10 OF 16

STATE OF NORTH CAROLINA
 DEPARTMENT OF TRANSPORTATION
 RALEIGH
TEMPORARY CONCRETE PEDESTAL AND BALLAST RETAINER (4 OF 4)



REVISIONS				SHEET NO.	
NO.	BY:	DATE:	NO.	BY:	DATE:
1			3		
2			4		

DRAWN BY: MTC DATE: 06-14
 CHECKED BY: DJM DATE: 06-14

DOCUMENT NOT CONSIDERED FINAL UNLESS ALL SIGNATURES COMPLETED

STV / Ralph Whitehead Associates, Inc.
 900 W Trade Street, Suite 715
 Charlotte, NC 28202
 NC License No. F-0991

TOTAL SHEETS
 68