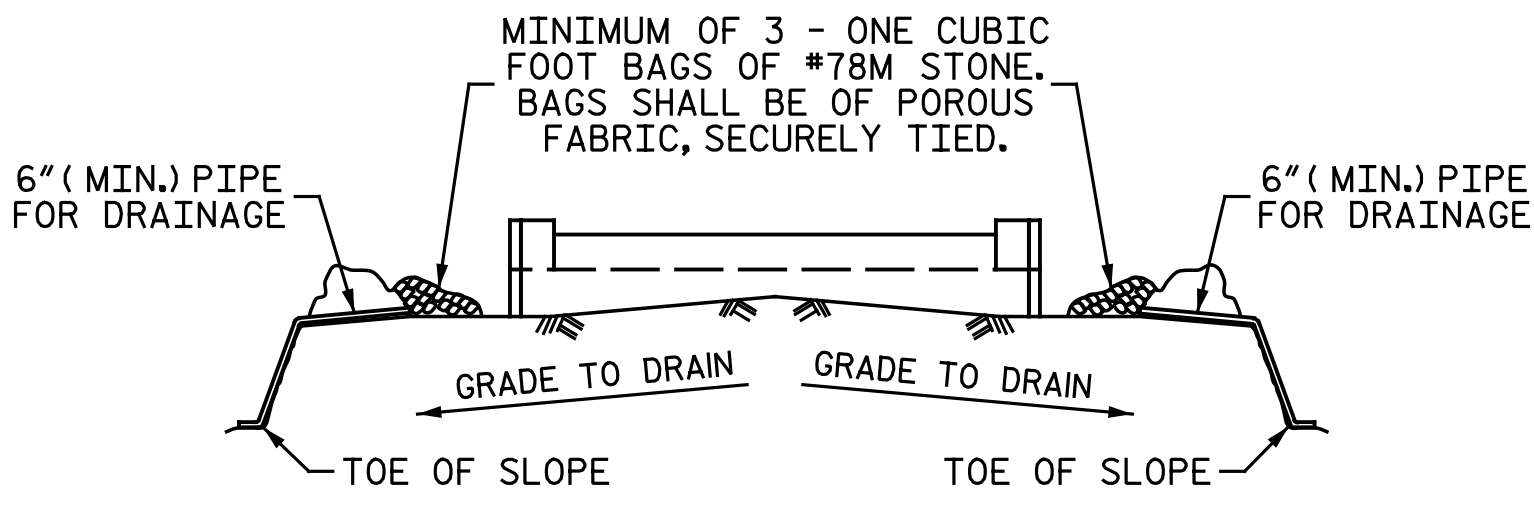


SECTION A-A

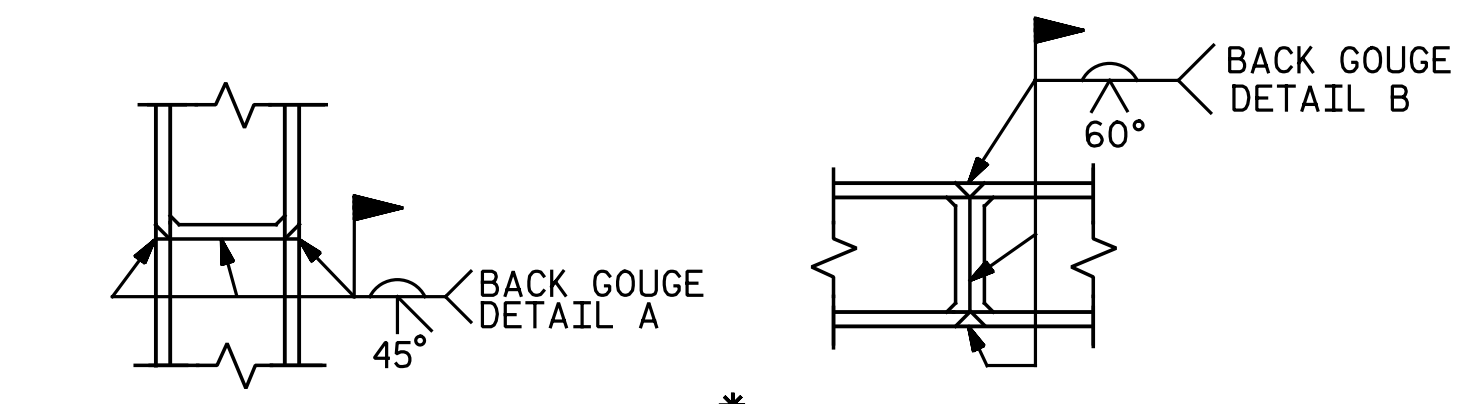


BAGGED STONE AND PIPE SHALL BE PLACED IMMEDIATELY AFTER COMPLETION OF END BENT EXCAVATION. PIPE MAY BE EITHER CONCRETE, CORRUGATED STEEL, CORRUGATED ALUMINUM ALLOY, OR CORRUGATED PLASTIC. PERFORATED PIPE WILL NOT BE ALLOWED.

BAGGED STONE SHALL REMAIN IN PLACE UNTIL THE ENGINEER DIRECTS THAT IT BE REMOVED. THE CONTRACTOR SHALL REMOVE AND DISPOSE OF SILT ACCUMULATIONS AT BAGGED STONE WHEN SO DIRECTED BY THE ENGINEER. BAGS SHALL BE REMOVED AND REPLACED WHENEVER THE ENGINEER DETERMINES THAT THEY HAVE DETERIORATED AND LOST THEIR EFFECTIVENESS.

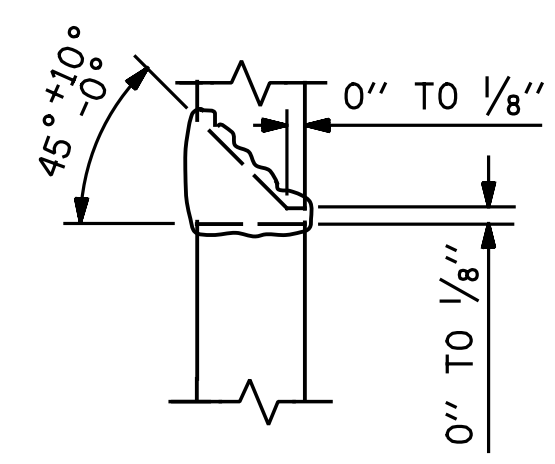
NO SEPARATE PAYMENT WILL BE MADE FOR THIS WORK AND THE ENTIRE COST OF THIS WORK SHALL BE INCLUDED IN THE UNIT CONTRACT PRICE BID FOR THE SEVERAL PAY ITEMS.

TEMPORARY DRAINAGE AT ABUTMENT

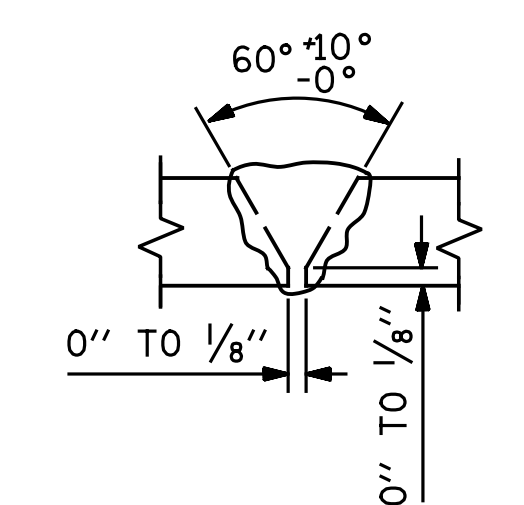


* PILE VERTICAL

* PILE HORIZONTAL OR VERTICAL



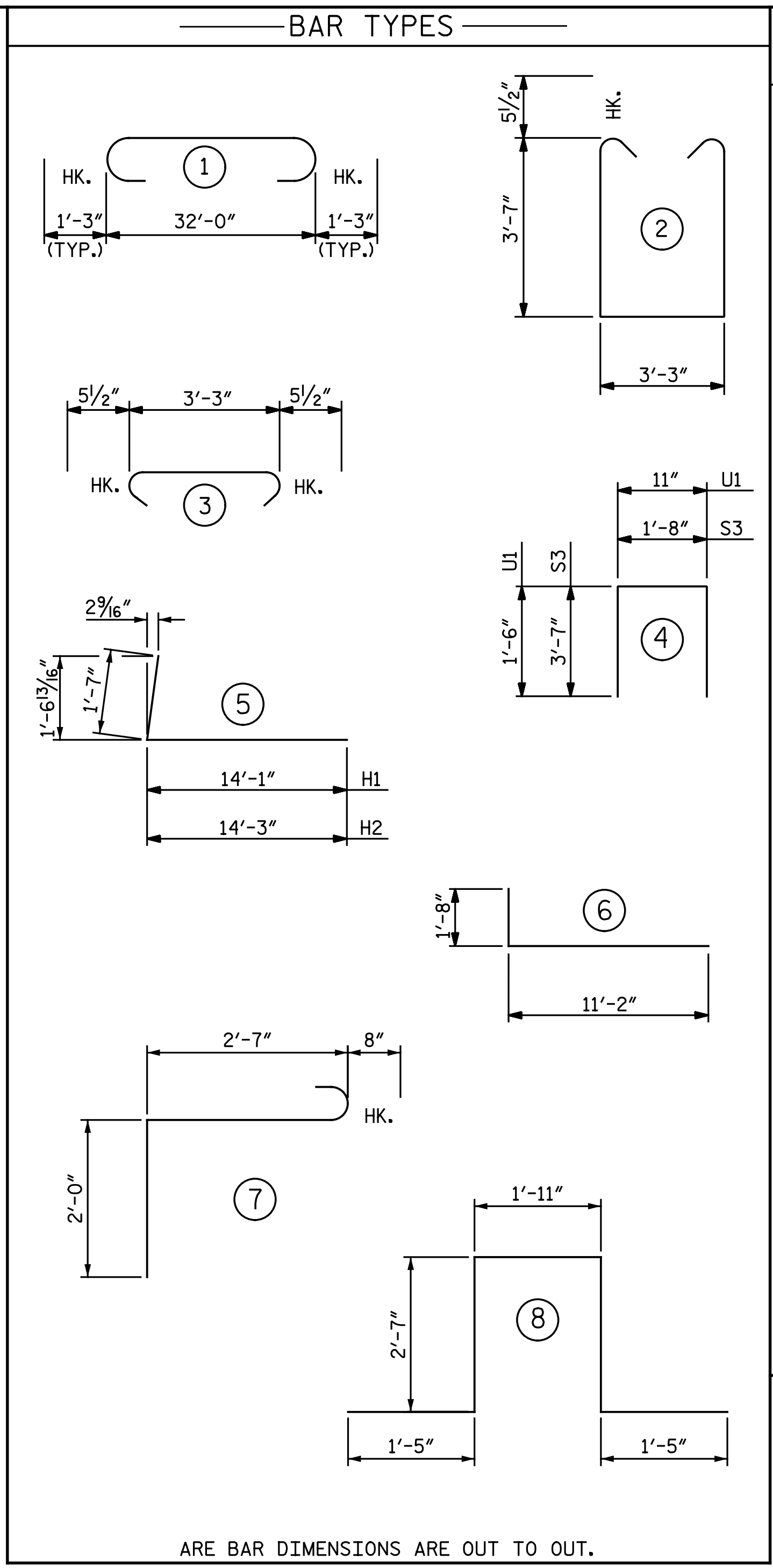
DETAIL A



DETAIL B

PILE SPLICE DETAILS

* POSITION OF PILE DURING WELDING.



ARE BAR DIMENSIONS ARE OUT TO OUT.

NOTES:

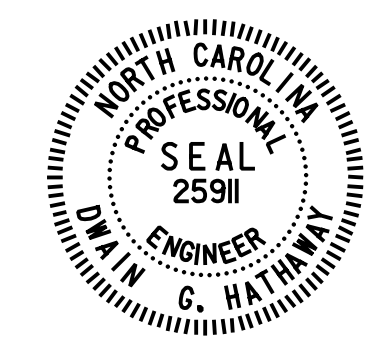
BACKWALL SHALL BE PLACED BEFORE APPLYING EPOXY PROTECTIVE COATING.

THE TOP SURFACE AREAS OF THE ABUTMENT CAPS SHALL BE CURED IN ACCORDANCE WITH THE STANDARD SPECIFICATIONS EXCEPT THE MEMBRANE CURING COMPOUND METHOD SHALL NOT BE USED.

BILL OF MATERIAL ABUTMENT 2

BAR NO.	NO.	SIZE	TYPE	LENGTH	WEIGHT
B1	8	9	1	34' - 6"	938
B2	24	4	STR	17' - 3"	277
B3	32	4	STR	17' - 3"	369
B4	8	4	STR	4' - 11"	26
B5	2	5	STR	1' - 6"	3
B6	3	5	STR	1' - 10"	6
B7	1	5	STR	3' - 6"	4
B8	1	5	STR	7' - 3"	8
H1	22	9	5	15' - 8"	1,172
H2	22	9	5	15' - 10"	1,184
H3	4	9	STR	2' - 11"	40
H4	4	9	STR	2' - 6"	34
H5	18	5	6	12' - 10"	241
K1	8	5	STR	32' - 0"	267
S1	48	5	2	11' - 4"	567
S2	48	5	3	4' - 2"	209
S3	64	4	4	8' - 10"	378
S4	6	6	8	9' - 11"	89
S5	6	6	7	5' - 3"	47
U1	27	5	4	3' - 11"	110
V1	53	8	STR	8' - 11"	1,262
V2	53	6	STR	8' - 11"	710
V3	12	8	STR	10' - 6"	336
V4	12	6	STR	10' - 6"	189
V5	32	9	STR	10' - 6"	1,142
V6	14	5	STR	10' - 6"	153
V7	18	5	STR	8' - 8"	163
REINFORCING STEEL				LBS.	9,924
CLASS "AA" CONCRETE BREAKDOWN					
POUR #1 CAP, LOWER WING WALLS & CONC. COLLAR				C.Y.	34.8
POUR #2 BACKWALL & UPPER WING WALLS				C.Y.	13.9
TOTAL CLASS "AA" CONCRETE				C.Y.	48.7
HP 12x53 STEEL PILES					
				NO. 18	LIN. FT. 540

PROJECT NO. U-3308
 DURHAM COUNTY
 STATION: 24+55.20 -LALT-
 13+22.18 -CSXN-
 SHEET 4 OF 4



Michael Baker INTERNATIONAL

Michael Baker Engineering
 8000 Regency Parkway, Suite 600
 Cary, North Carolina 27518
 NC License No.: F-1084

REVISIONS						SHEET NO.
NO.	BY:	DATE:	NO.	BY:	DATE:	S4-44
1			3			TOTAL SHEETS
2			4			68

5/3/2016 9:37:24 AM
 File Name: Y:\Projects\NCDDOT\U-3308\Structures\Drawings\Final\404_044_U3308_SML_AB204.dgn

DRAWN BY: M. D. MAYHEW DATE: 3-6-14
 CHECKED BY: S. A. DENNEY DATE: 3-13-14