

**NOTES**

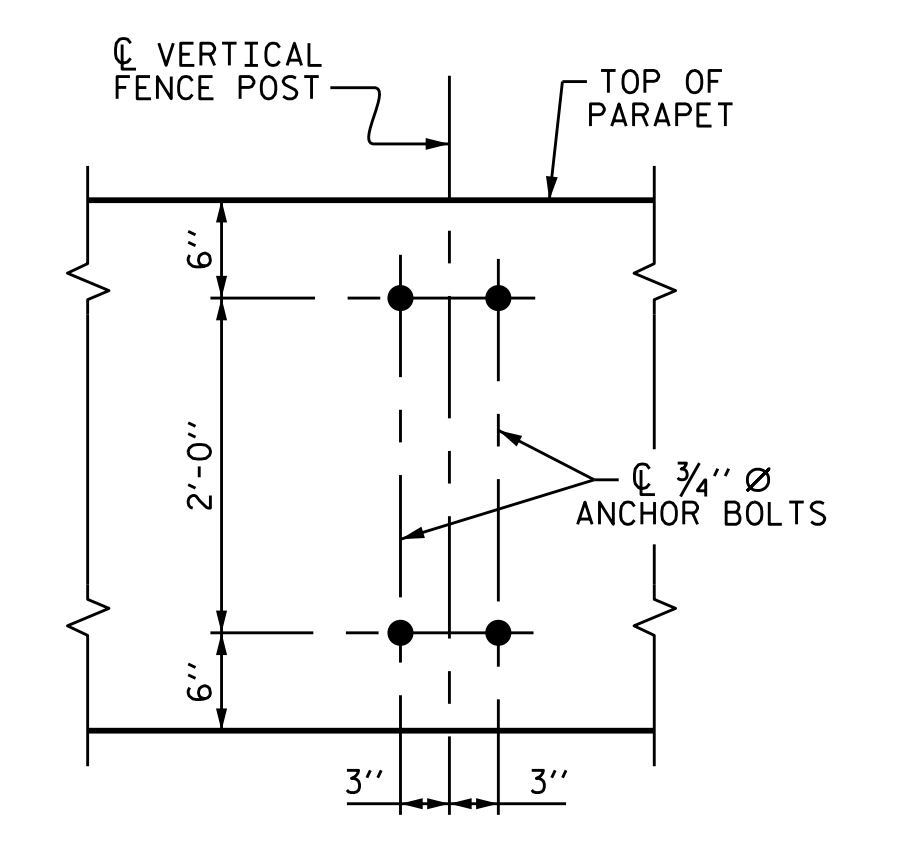
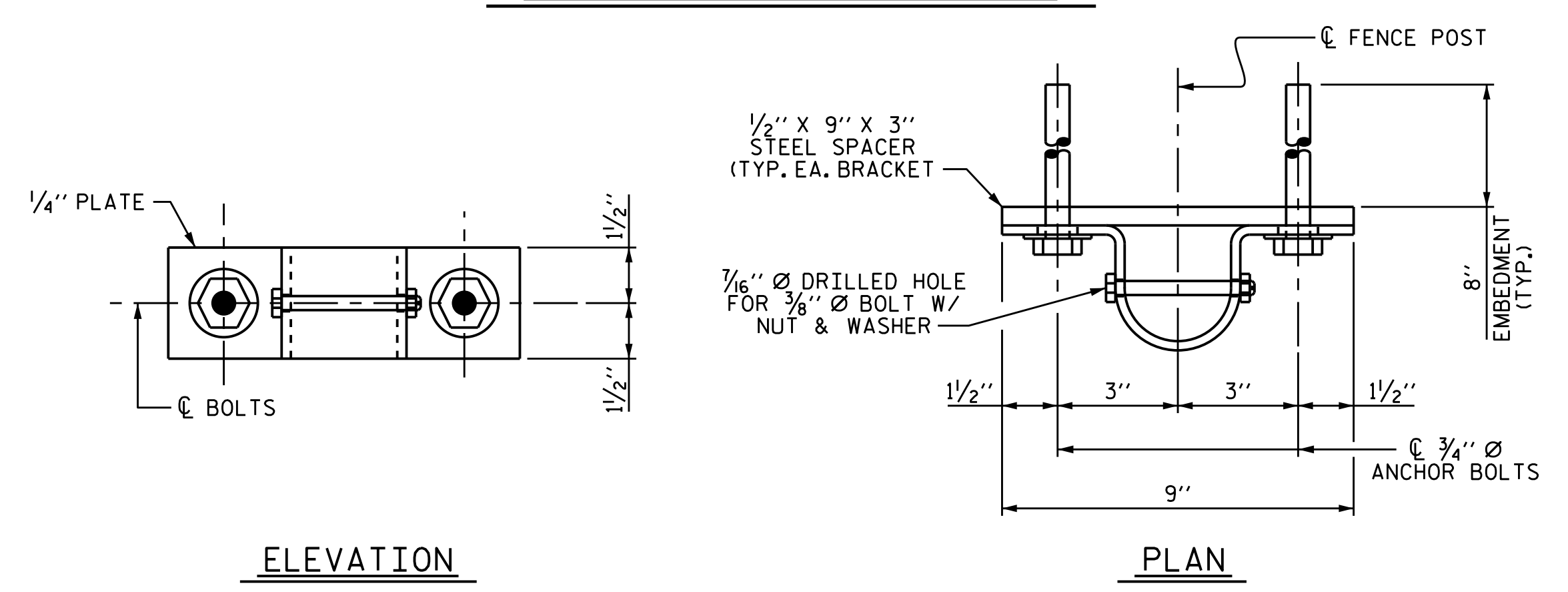
FOR BRIDGE MOUNTED CHAIN LINK FENCE, SEE SPECIAL PROVISIONS.

ALL FENCE MATERIAL SHALL BE BLACK VINYL COATED AND MEET THE REQUIREMENTS OF SECTION 1050 OF THE STANDARD SPECIFICATIONS. GALVANIZE ALL STEEL PARTS AND HARDWARE IN ACCORDANCE WITH ARTICLE 1076 OF THE STANDARD SPECIFICATIONS.

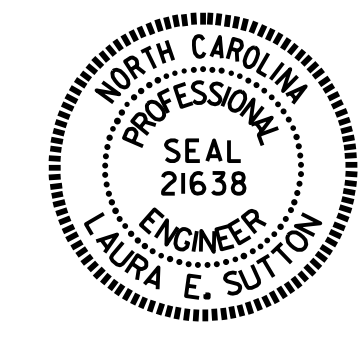
BOLTS SHALL CONFORM TO THE REQUIREMENTS OF ASTM A307 AND NUTS SHALL CONFORM TO THE REQUIREMENTS OF AASHTO M291. BOLTS, NUTS AND WASHERS SHALL BE GALVANIZED. AT THE CONTRACTOR'S OPTION, STAINLESS STEEL BOLTS, NUTS AND WASHERS MAY BE USED AS AN ALTERNATE FOR THE 3/4" Ø GALVANIZED BOLTS, NUTS AND WASHERS. THEY SHALL CONFORM TO OR EXCEED THE MECHANICAL REQUIREMENTS OF ASTM A307. THE USE OF THIS ALTERNATE SHALL BE APPROVED BY THE ENGINEER.

THE CONTRACTOR MAY USE AN ADHESIVELY ANCHORED ANCHOR BOLTS IN PLACE OF THE METAL RAIL ANCHOR ASSEMBLY. LEVEL ONE FIELD TESTING IS REQUIRED, AND THE YIELD LOAD OF THE 3/4" Ø BOLTS IS 10 KIPS. FOR ADHESIVELY ANCHORED ANCHOR BOLTS OR DOWELS, SEE THE STANDARD SPECIFICATIONS.

| PAY LENGTH |                 |
|------------|-----------------|
| STAGE II   | 167.81 LIN. FT. |
| STAGE III  | 167.81 LIN. FT. |
| TOTAL      | 335.62 LIN. FT. |



PROJECT NO. U-3308  
DURHAM COUNTY  
 STATION: 16+42.70-LALT-



| STATE OF NORTH CAROLINA<br>DEPARTMENT OF TRANSPORTATION<br>RALEIGH |     |       |     |     |                    |
|--|-----|-------|-----|-----|--------------------|
| SUPERSTURTURE<br>BRIDGE MOUNTED<br>CHAIN LINK FENCE                |     |       |     |     |                    |
| SEAL<br>21638<br>ENGINEER<br>LAURA E. SUTTON                       |     |       |     |     |                    |
| DocuSigned by:<br>Laura E. Sutton<br>4/1/2016                      |     |       |     |     |                    |
| REVISIONS  |     |       |     |     |                    |
| NO.  | BY: | DATE: | NO. | BY: | DATE:              |
| 1  |     |       | 3   |     |                    |
| 2  |     |       | 4   |     |                    |
|  |     |       |     |     | SHEET NO.<br>S1-30 |
|  |     |       |     |     | TOTAL SHEETS<br>47 |

DRAWN BY: P.S. ADKINS DATE: 8/4/14  
 CHECKED BY: L.E. SUTTON DATE: 9/24/14

DOCUMENT NOT CONSIDERED  
 FINAL UNLESS ALL  
 SIGNATURES COMPLETED