

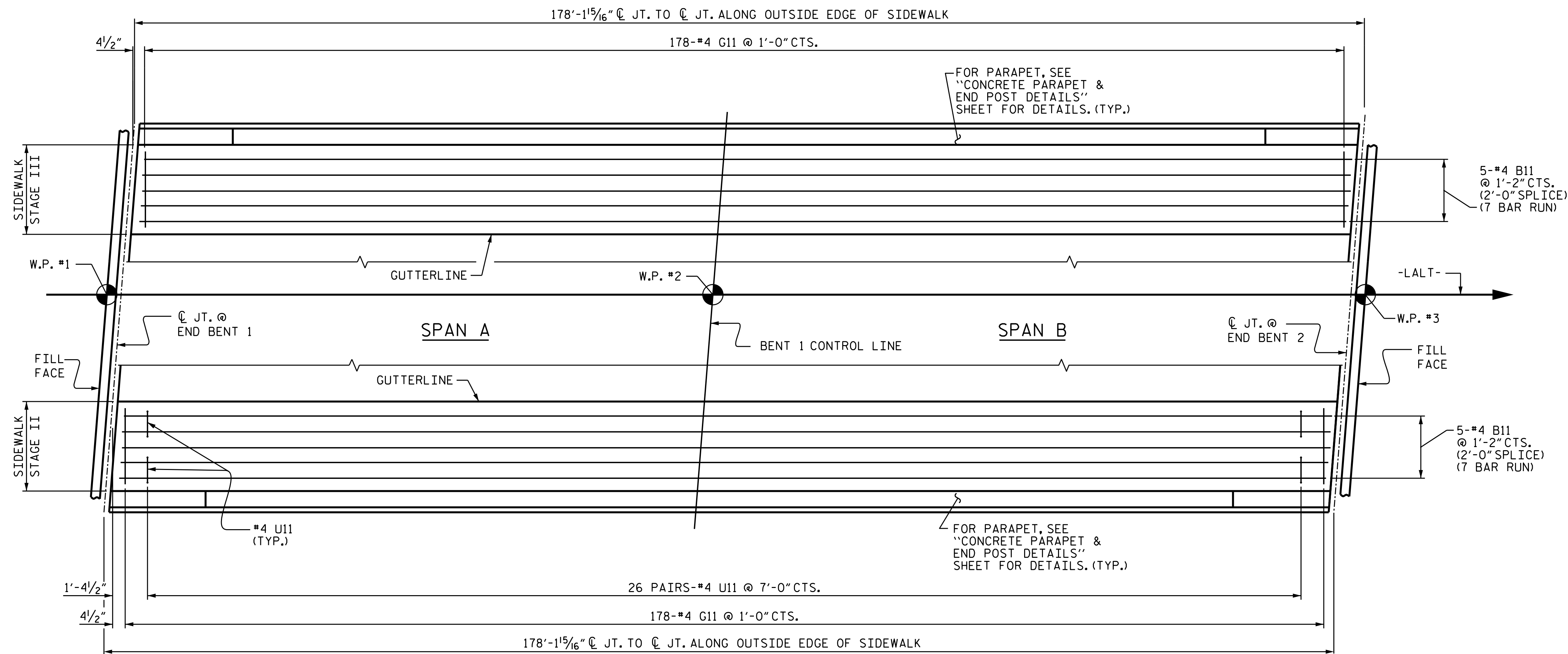
NOTES

THE SIDEWALK IN A CONTINUOUS UNIT SHALL NOT BE CAST UNTIL ALL SLAB CONCRETE IN THAT UNIT HAS REACHED A MINIMUM COMPRESSIVE STRENGTH OF 3,000 PSI.

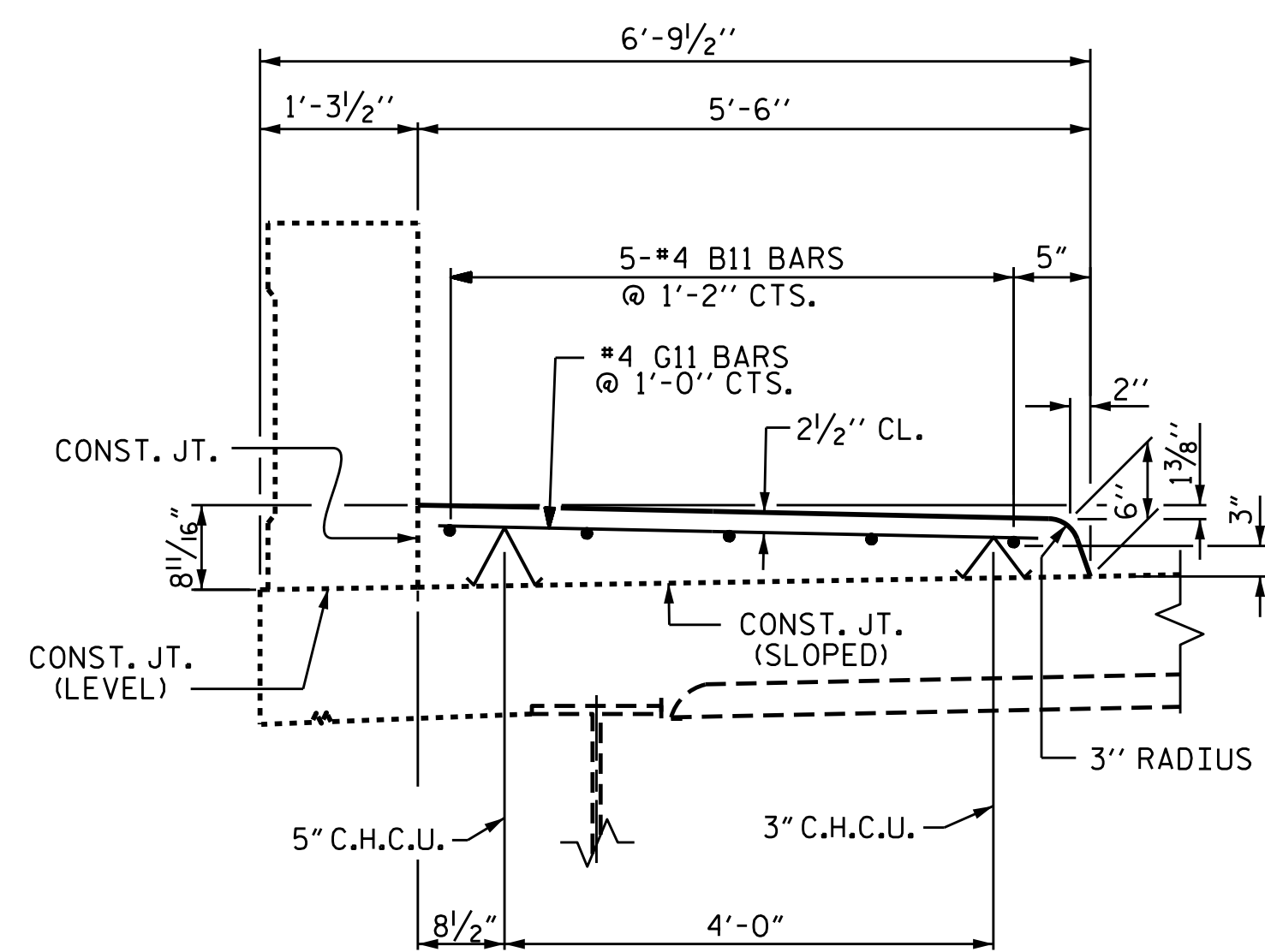
GROOVED CONTRACTION JOINTS, 1/2" IN DEPTH, SHALL BE TOOLED IN ALL EXPOSED FACES OF THE SIDEWALK IN ACCORDANCE WITH ARTICLE 825-10(B) OF THE STANDARD SPECIFICATIONS. THE CONTRACTION JOINTS SHALL BE LOCATED AT A SPACING OF 8 TO 10 FEET BETWEEN EXPANSION JOINTS. NO CONTRACTION JOINTS WILL BE REQUIRED FOR SEGMENTS LESS THAN 10 FEET IN LENGTH.

ALL REINFORCING STEEL IN SIDEWALK SHALL BE EPOXY COATED.

JOINT OPENING IN SIDEWALK FORMED TO MATCH SAWED OPENING IN DECK. SEE "APPROACH SLAB DETAILS" SHEET.

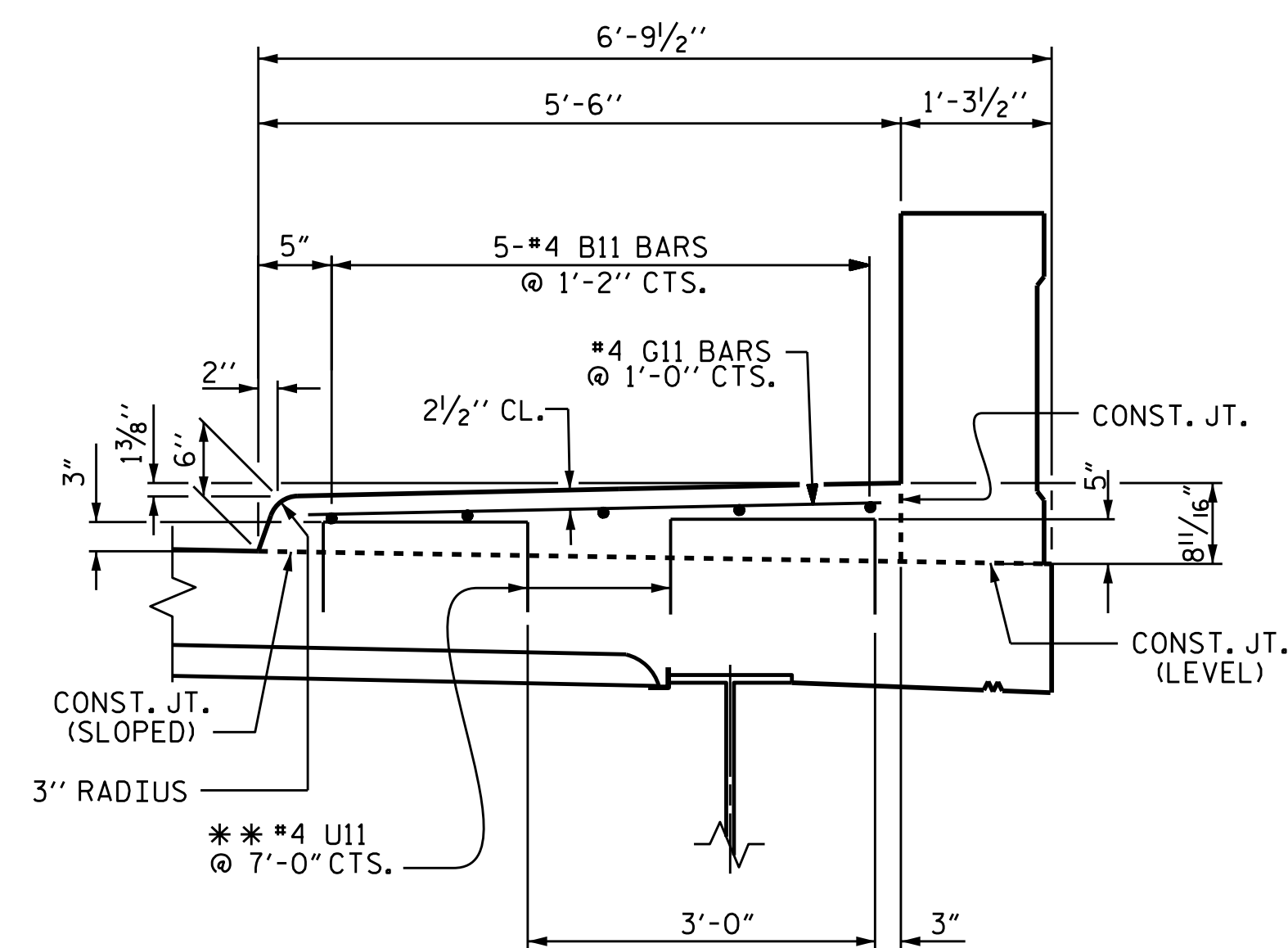


PLAN OF SIDEWALK



SECTION THROUGH SIDEWALK STAGE III

DECK REINFORCING STEEL NOT SHOWN FOR CLARITY.



SECTION THROUGH SIDEWALK STAGE II

DECK REINFORCING STEEL NOT SHOWN FOR CLARITY.
 ** #4 U11 BARS MAY BE PUSHED INTO GREEN CONCRETE AFTER SPAN HAS BEEN SCREEDED OFF.

PROJECT NO. U-3308
DURHAM COUNTY
 STATION: 16+42.70-LALT-



DocuSigned by:
 Donald R. Smith, Jr.
 EDC8706174B490
 4/1/2016

STATE OF NORTH CAROLINA
 DEPARTMENT OF TRANSPORTATION
 RALEIGH
 SUPERSTRUCTURE
 SIDEWALK DETAILS
 STAGE II & STAGE III

REVISIONS						SHEET NO.	
NO.	BY:	DATE:	NO.	BY:	DATE:	TOTAL SHEETS	
1			3			47	
2			4			47	

DRAWN BY : P.S. ADKINS DATE : 12-17-13
 CHECKED BY : J.D. HAWK DATE : 9-5-14

DOCUMENT NOT CONSIDERED
 FINAL UNLESS ALL
 SIGNATURES COMPLETED

STR. #1