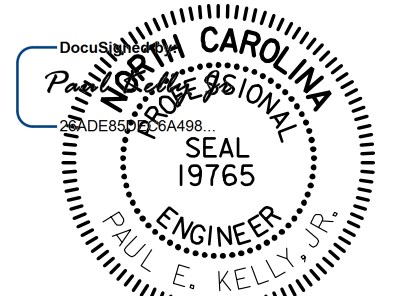
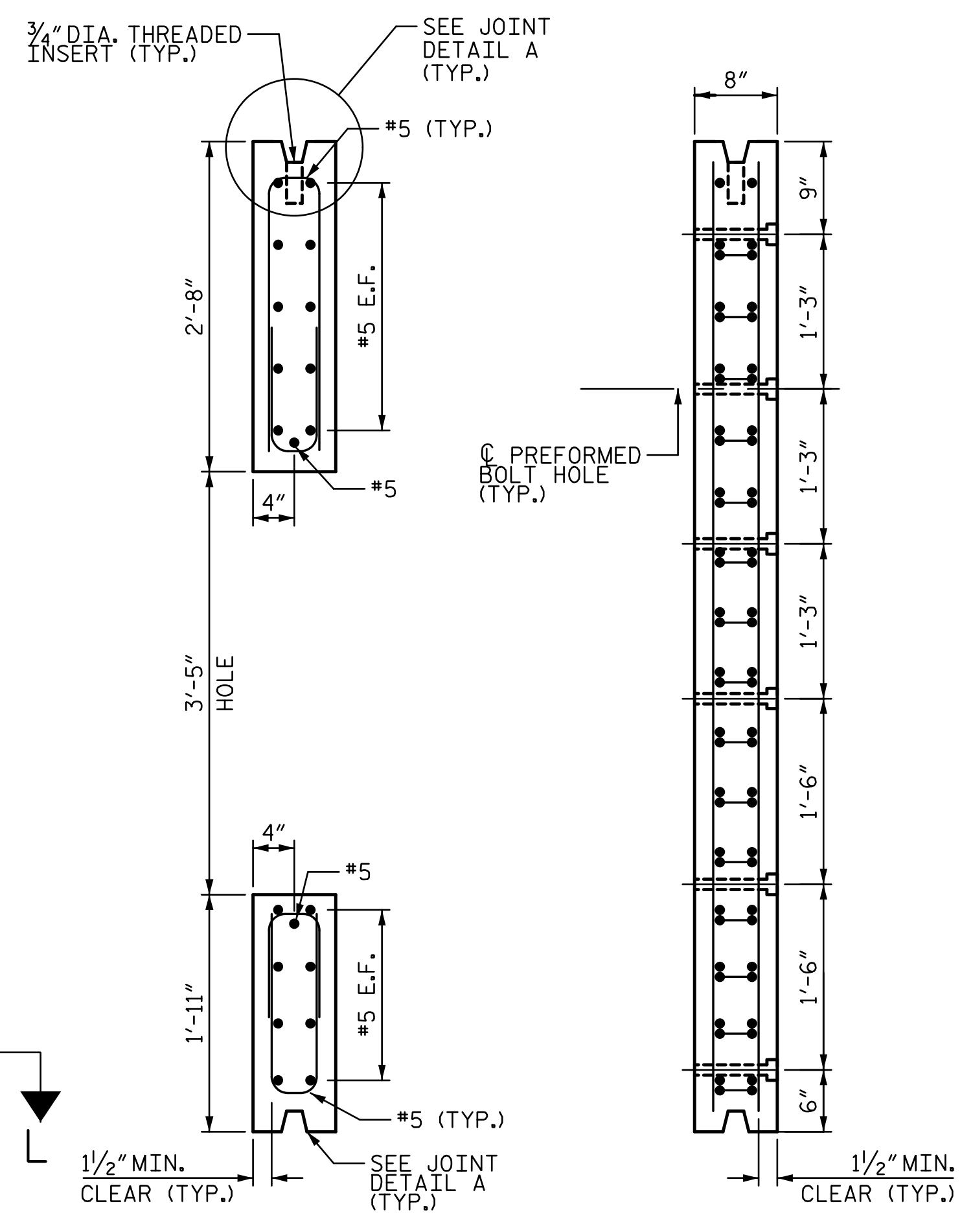
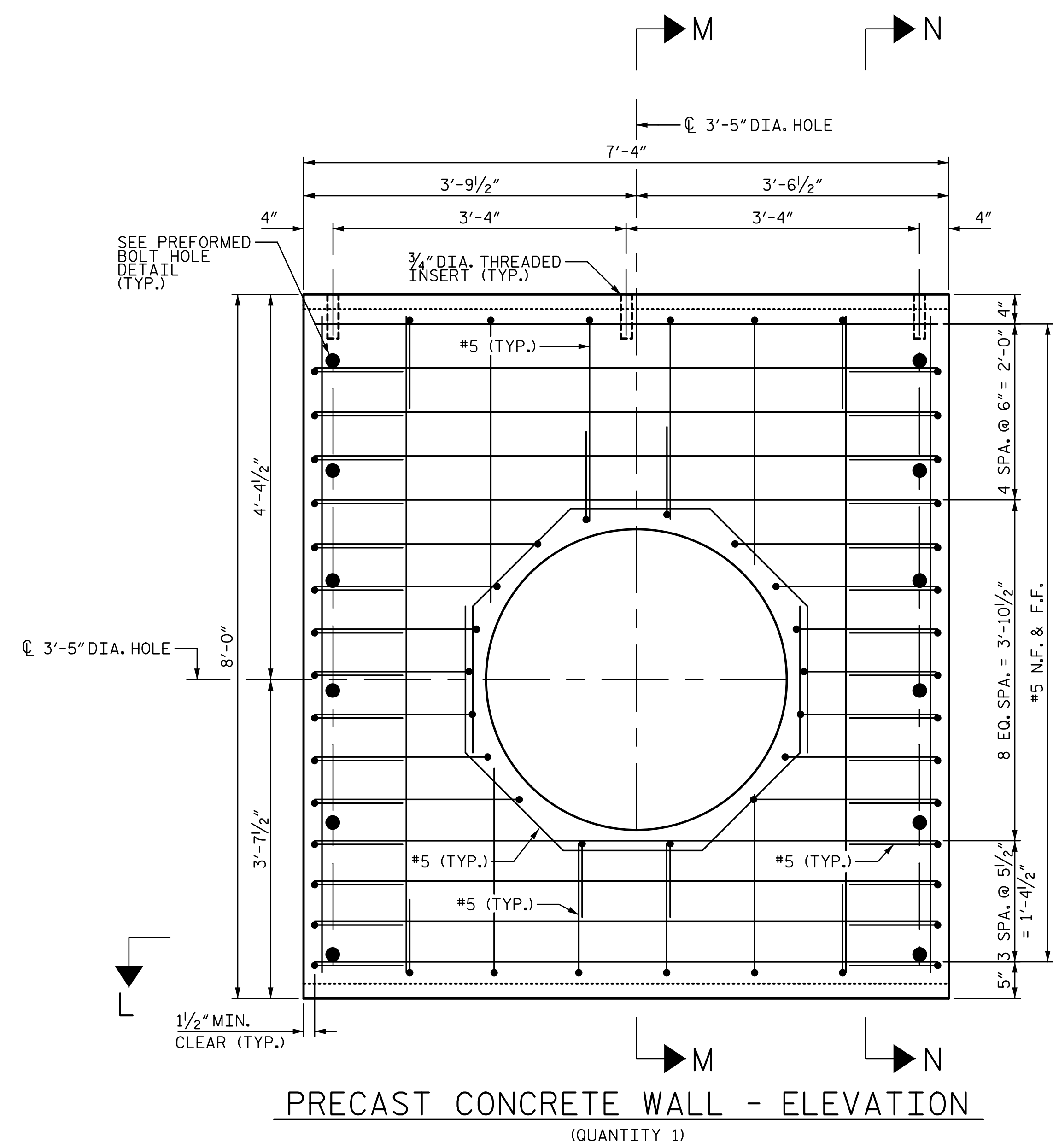


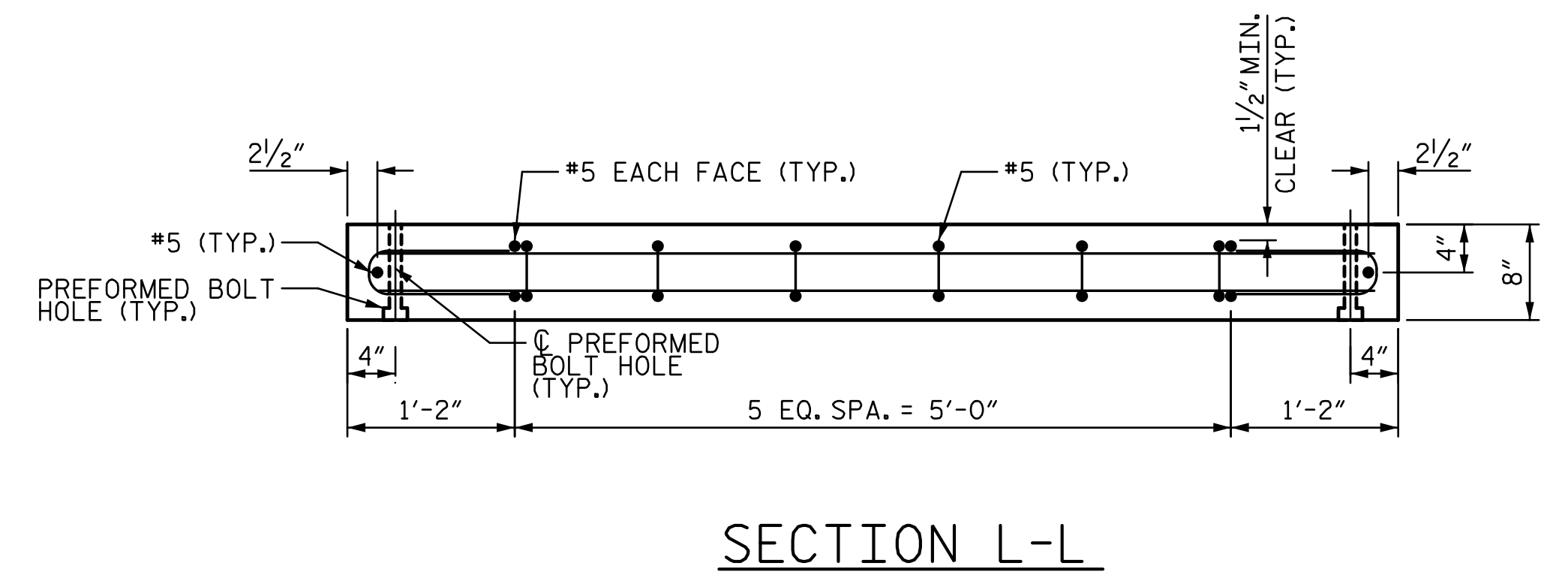
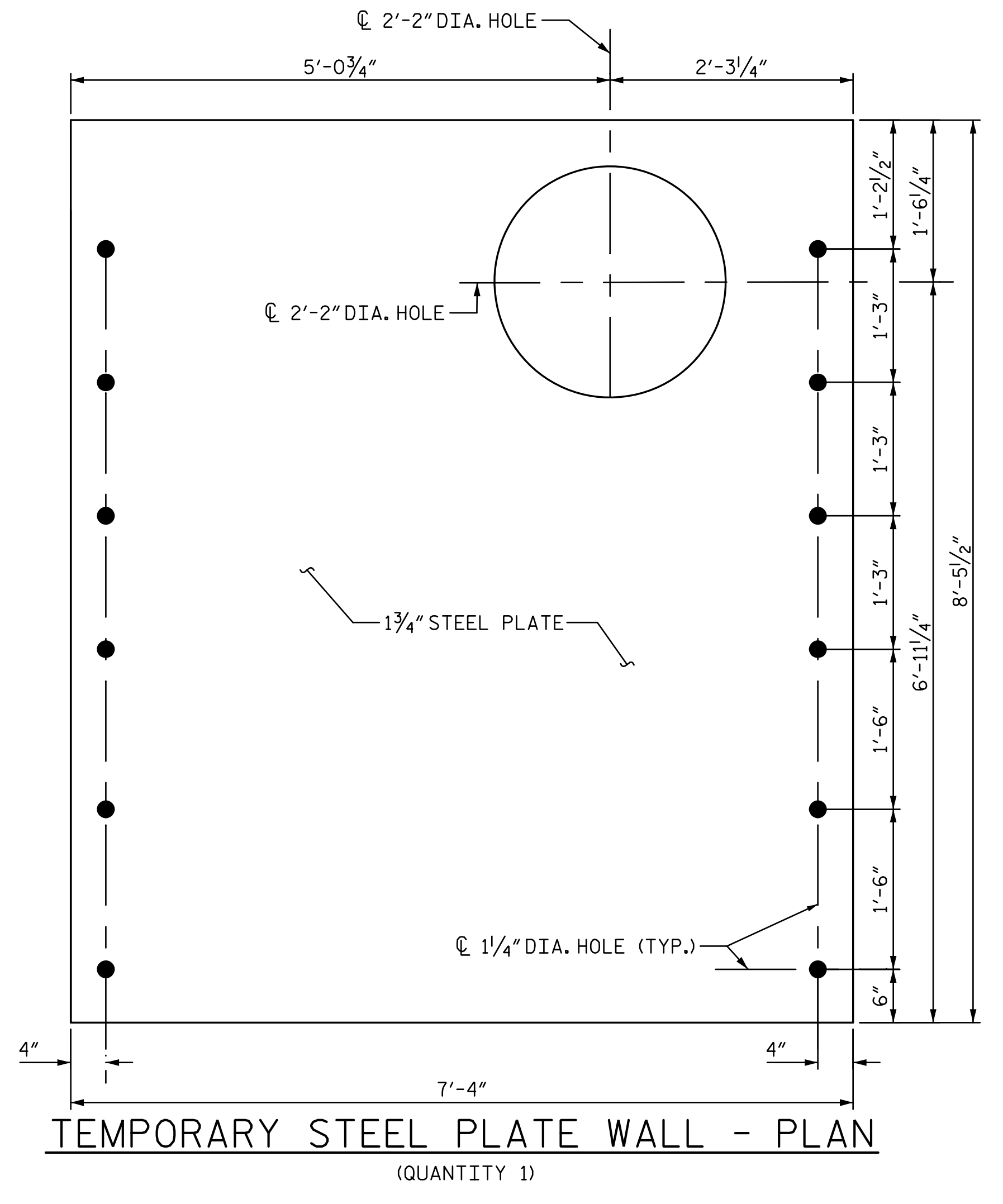
NSR BRIDGE MP H-56.10  
CSXT BRIDGE MP SB-154.61

PROJECT REFERENCE NO. <b>U-3308</b>	SHEET NO. <b>RR-30</b>
R/W SHEET NO.	
STRUCTURES ENGINEER	
	
9/21/2015	

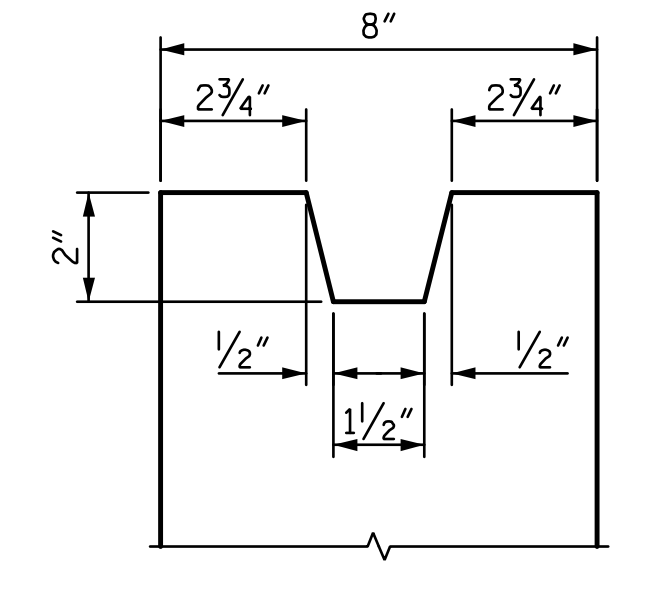
DOCUMENT NOT CONSIDERED FINAL  
UNLESS ALL SIGNATURES COMPLETED



SECTION M-M SECTION N-N



SECTION L-L



JOINT DETAIL A

**NOTES:**

1. PRECAST ALL ELEMENTS TO MEET ASTM C913.
2. ALL REINFORCING STEEL SHALL BE GRADE 60 AND MEET ASTM A615.
3. USE 5,000 PSI CONCRETE.
4. USE 3/4" DIA. DAYTON SUPERIOR F57 NC THREADED INSERTS OR EQUIVALENT.
5. ALL FASTENERS SHALL BE GALVANIZED 3/4" DIA. THREADED ROD AND GALVANIZED HARDWARE.
6. MINIMALLY ADJUST REINFORCING STEEL TO PROVIDE ADEQUATE MINIMUM CLEAR COVER, PLACE STEPS, OR INSTALL THREADED INSERTS.
7. FOR JUNCTION BOX NO. 2, SEE SHEET RR-28.
8. FOR PREFORMED BOLT HOLE DETAIL, SEE SHEET RR-29.

N:\PROJ\2513251\station\struct\junction\_Box\RR-30\_precast\_walland\_steelplate\_wall.dgn  
 2:11:34 PM  
 9/17/2015  
 ChitKhMB