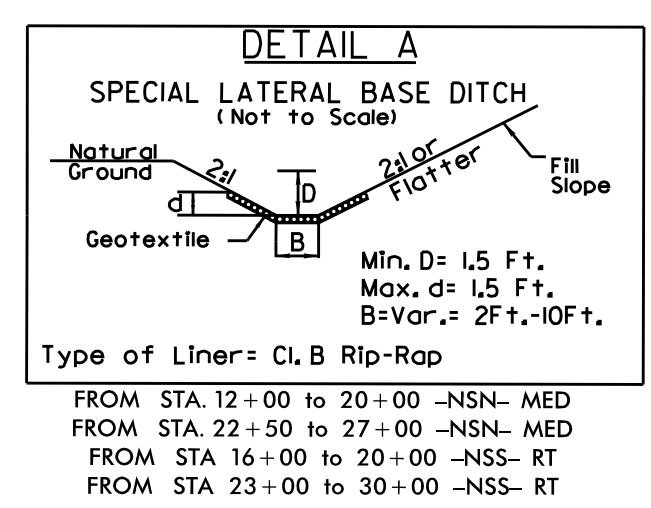


5/14/99



PROJECT REFERENCE NO. U-3308 SHEET NO. UC-16

DESIGNED BY: DGB
 DRAWN BY: JGB
 CHECKED BY: KFC
 APPROVED BY: JJW

REVIS: []

NORTH CAROLINA DEPARTMENT OF TRANSPORTATION
 UTILITIES ENGINEERING SEC.
 PHONE: (919) 707-6690
 FAX: (919) 250-4151

UTILITY CONSTRUCTION PLANS ONLY

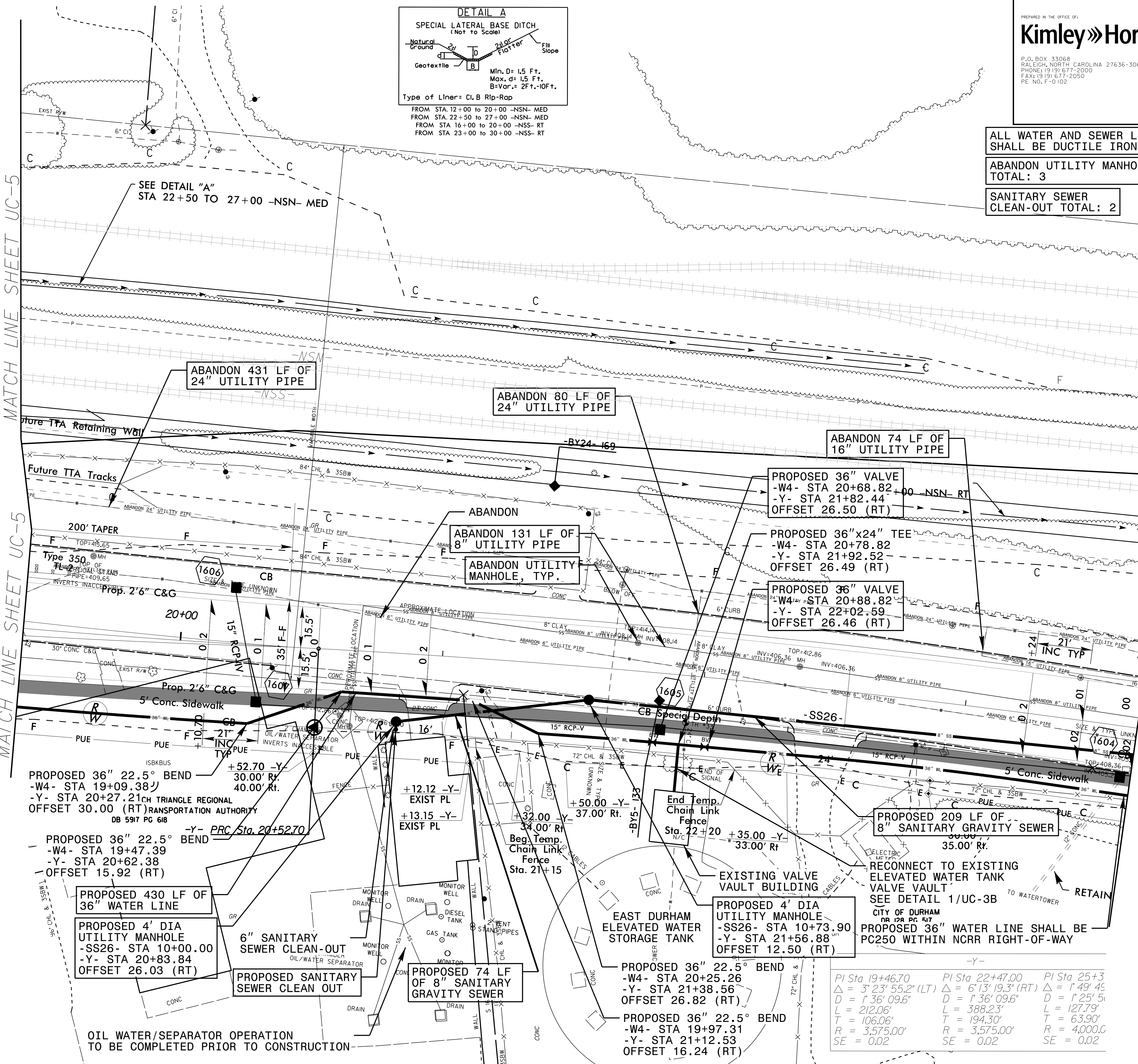
ALL WATER AND SEWER LINES SHALL BE DUCTILE IRON PIPE

ABANDON UTILITY MANHOLE TOTAL: 3

SANITARY SEWER CLEAN-OUT TOTAL: 2

MATCH LINE SHEET UC-5

MATCH LINE SHEET UC-17



PROPOSED 36" 22.5° BEND
 -W4- STA 19+09.38
 -Y- STA 20+27.21
 OFFSET 30.00 (RT)
 TRANSPORTATION AUTHORITY
 DB 5917 PG 618

PROPOSED 36" 22.5° BEND
 -W4- STA 19+47.39
 -Y- STA 20+62.38
 OFFSET 15.92 (RT)

PROPOSED 430 LF OF 36" WATER LINE

PROPOSED 4' DIA UTILITY MANHOLE
 -SS26- STA 10+00.00
 -Y- STA 20+83.84
 OFFSET 26.03 (RT)

6" SANITARY SEWER CLEAN-OUT

PROPOSED SANITARY SEWER CLEAN OUT

PROPOSED 74 LF OF 8" SANITARY GRAVITY SEWER

PROPOSED 36" 22.5° BEND
 -W4- STA 20+25.26
 -Y- STA 21+38.56
 OFFSET 26.82 (RT)

PROPOSED 36" 22.5° BEND
 -W4- STA 19+97.31
 -Y- STA 21+12.53
 OFFSET 16.24 (RT)

PROPOSED 4' DIA UTILITY MANHOLE
 -SS26- STA 10+73.90
 -Y- STA 21+56.88
 OFFSET 12.50 (RT)

PROPOSED 209 LF OF 8" SANITARY GRAVITY SEWER
 35.00' Rf.

RECONNECT TO EXISTING ELEVATED WATER TANK VALVE VAULT
 SEE DETAIL 1/UC-3B

CITY OF DURHAM
 DB 128 PG 617

PROPOSED 36" WATER LINE SHALL BE PC250 WITHIN NCRR RIGHT-OF-WAY

PI Sta 19+46.70	PI Sta 22+47.00	PI Sta 25+3
$\Delta = 3' 23' 55.2" (LT)$	$\Delta = 6' 13' 19.3" (RT)$	$\Delta = 1' 49' 45"$
$D = 1' 36' 09.6"$	$D = 1' 36' 09.6"$	$D = 1' 25' 5"$
$L = 212.06'$	$L = 388.23'$	$L = 127.79'$
$T = 106.06'$	$T = 194.30'$	$T = 63.90'$
$R = 3,575.00'$	$R = 3,575.00'$	$R = 4,000.0'$
$SE = 0.02$	$SE = 0.02$	$SE = 0.02$

OIL WATER/SEPARATOR OPERATION TO BE COMPLETED PRIOR TO CONSTRUCTION

