

**DO NOT CUT
CABLE TSE-7**

- 2 4 24 EXISTING SEL-10
- 2 4 12 EXISTING TSE-7
- 1 6 12 D0228
- 30 AERIAL SPLICE ENCLOSURE #11
- 1 4 24 EXISTING SEL-10
- 1 4 12 EXISTING TSE-7

BOND RISER & MESSENGER
CABLE TO POLE GROUND
D0228

- 1 6 12
- 1 12 2
- 20

- EXISTING SEL-10
- 1 4 24
- EXISTING TSE-7
- 1 4 12

- 1 4 24 EXISTING SEL-10
- 1 4 12 EXISTING TSE-7

RELOCATE EXISTING
GPS UNIT TO NEW
CABINET - SEE NOTE 1

- D0228 1 6 12
- 22
- 28
- 61

- 1 6 12 D0228
- 7
- 8
- 2 9 2
- 18
- 1 6 12 D0228
- 7
- 2 14 2
- 15
- 18

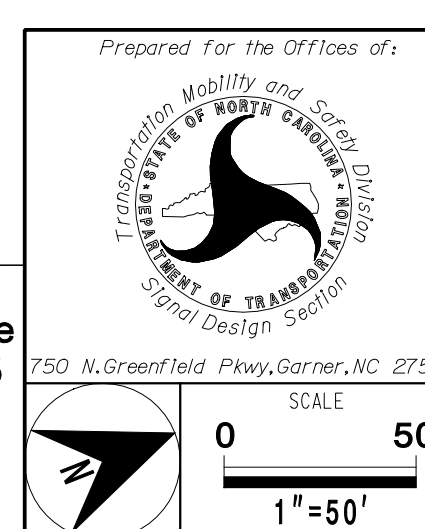
MATCHLINE SEE SCP.6

MATCHLINE SEE SCP.8

12/17/2014 G:\w\enr\p\101\on\13\017_00_NCDOT_2012_Traffic_LSA\13-017-03_U-3308_Signals\MTR\off\cable_routing\PLANS\SCP7.dgn J.Kopaskie

SEPI
ENGINEERING & CONSTRUCTION

1025 Wade Avenue
Raleigh, NC 27605
Tel: 919-789-9977
Fax: 919-789-9591
License #: C-2197



**COMMUNICATIONS CABLE
AND CONDUIT ROUTING PLAN**

Division 5 Durham County Durham

PLAN DATE: November 2014 REVIEWED BY: J Hochanadel

PREPARED BY: J Kopaskie REVIEWED BY:

REVISIONS	INIT.	DATE

SEAL

NORTH CAROLINA
PROFESSIONAL
ENGINEER

JEFFREY H. HOCHANADEL
SEAL
28430

12/22/2014

SIGNATURE DATE

SIG. INVENTORY NO.

