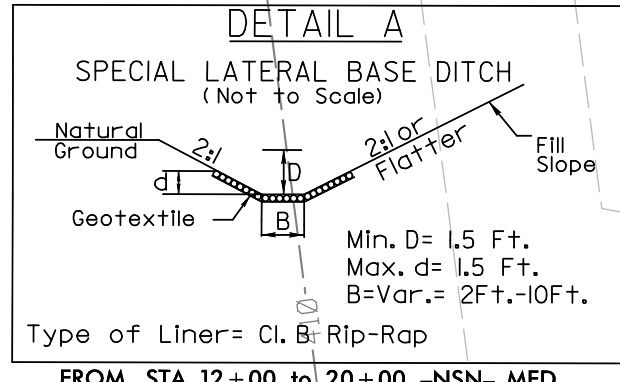
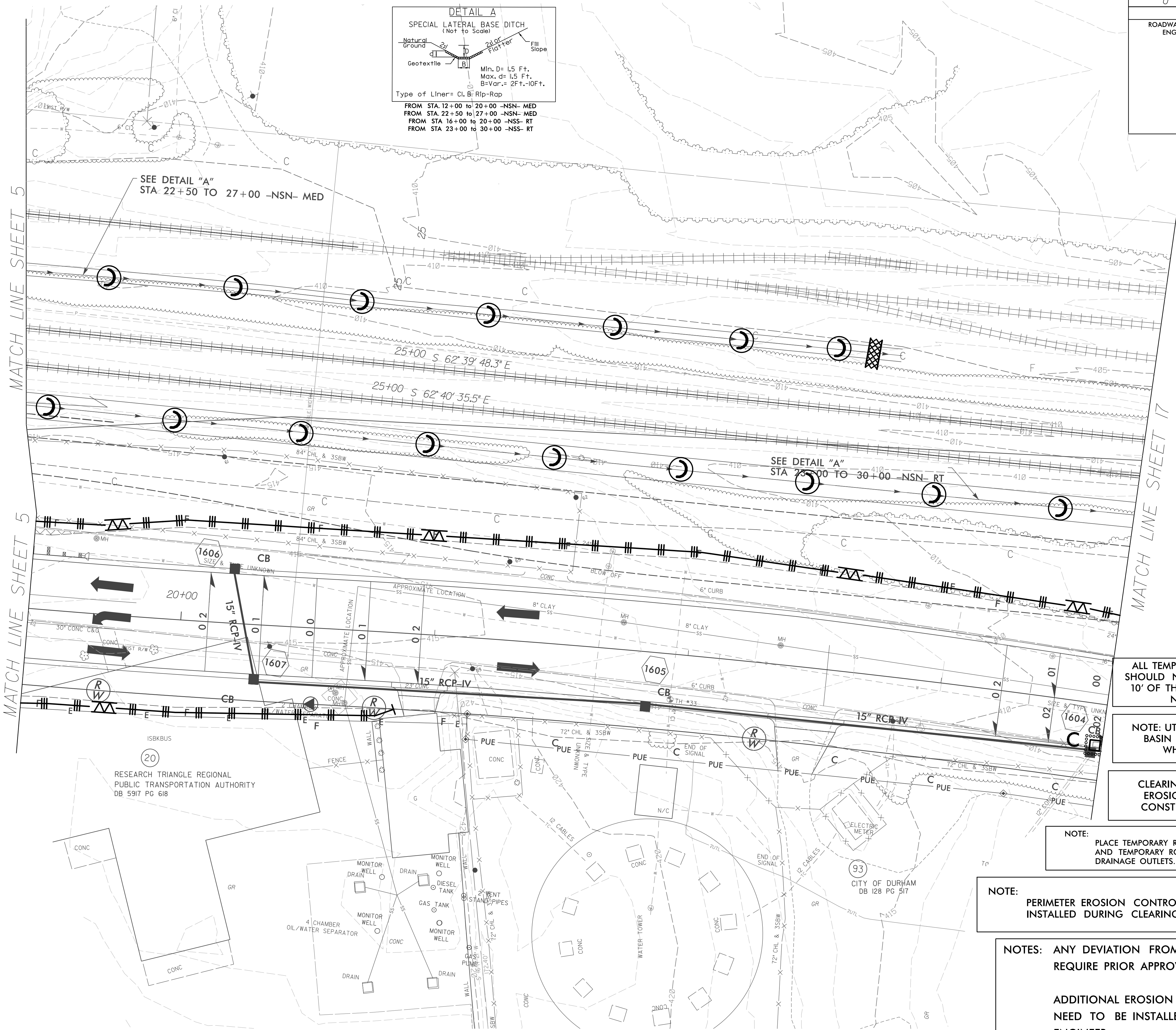
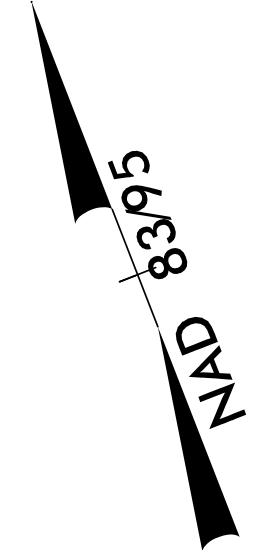


RW Revision 6/1/14 JCL
 Removed Permanent Utility Easement (PUE) from Parcel 20.

| | |
|---------------------------------|-----------------------------|
| PROJECT REFERENCE NO. U-3308 | SHEET NO. EC-16/CONST-16 |
| RW SHEET NO. | |
| ROADWAY DESIGN ENGINEER | HYDRAULICS ENGINEER |



FROM STA. 12+00 TO 20+00 -NSN- MED
 FROM STA. 22+50 TO 27+00 -NSN- MED
 FROM STA. 16+00 TO 20+00 -NSS- RT
 FROM STA. 23+00 TO 30+00 -NSS- RT



ALL TEMPORARY E&S MEASURES SHOULD NOT BE PLACED WITHIN 10' OF THE CENTERLINE OF THE NEAREST TRACK

NOTE: UTILIZE SPECIAL STILLING BASIN AS STILLING BASIN WHERE APPLICABLE

CLEARING AND GRUBBING EROSION CONTROL FOR CONSTRUCTION SHEET 16

NOTE: PLACE TEMPORARY ROCK SEDIMENT DAMS TYPE - B AND TEMPORARY ROCK SILT CHECKS TYPE - A AT DRAINAGE OUTLETS.

NOTE: PERIMETER EROSION CONTROL MEASURES SHALL BE INSTALLED DURING CLEARING AND GRUBBING PHASE.

NOTES: ANY DEVIATION FROM OPTIONS GIVEN WILL REQUIRE PRIOR APPROVAL BY ENGINEER.

ADDITIONAL EROSION CONTROL DEVICES MAY NEED TO BE INSTALLED AS DIRECTED BY THE ENGINEER.

8/17/99
 4/13/2015
 R:\Rocob\4\EC\3308_rdu_EC.ps16_CG.dgn