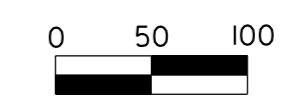
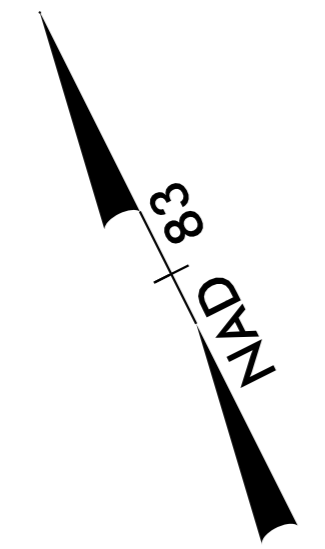
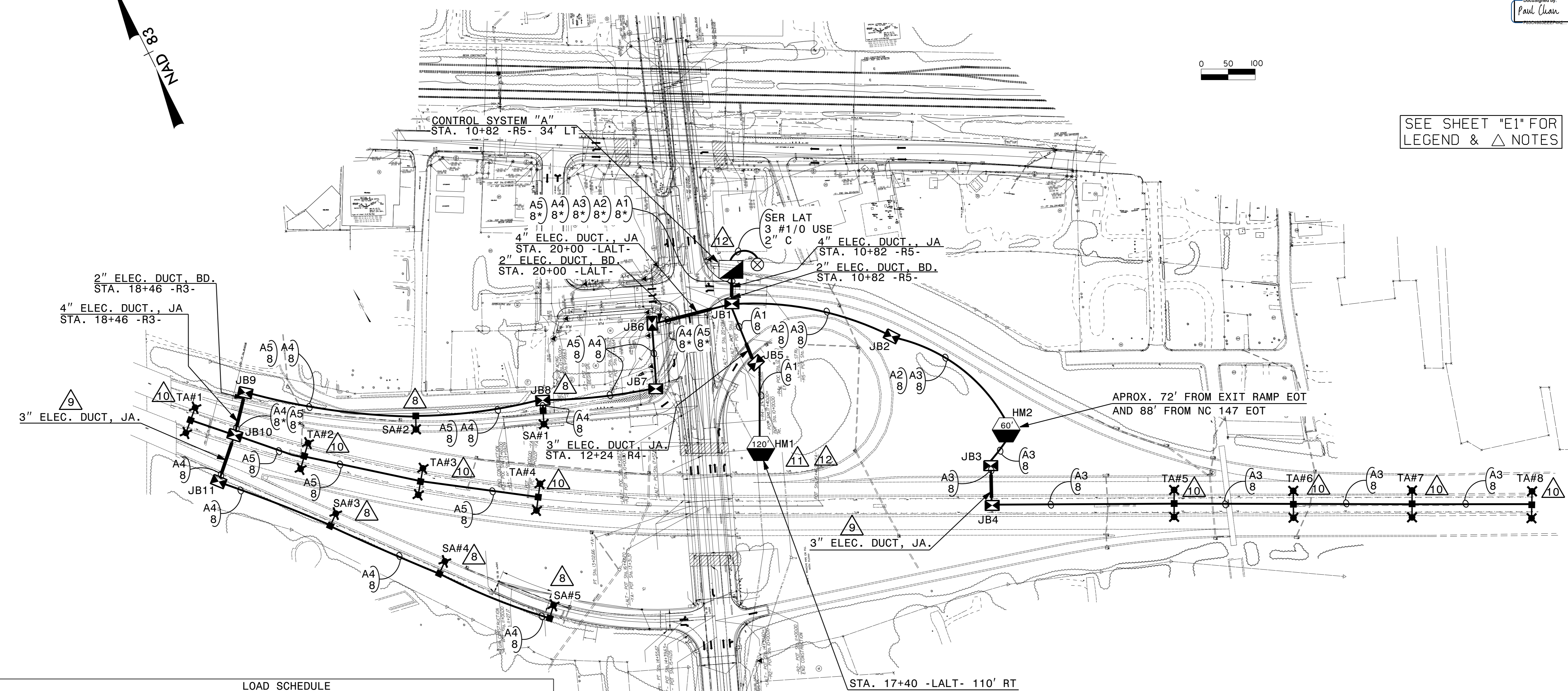


USE FOR LIGHTING CONSTRUCTION ONLY



SEE SHEET "E1" FOR
LEGEND & △ NOTES



LOAD SCHEDULE
ALSTON AVE/NC 147 INTERCHANGE, NE QUAD
CONTROL SYSTEM "A"

1Ø, 3W, 240/480 VAC							
CIRCUIT ID	SINGLE ARM 1 @ 185W MAX. LED	TWIN ARM 2 @ 185W MAX LED	60' HIGH MAST W/ 4 320W MAX. LED LUMINAIRES	120' HIGH MAST W/ 8 550W MAX. LED LUMINAIRES	AMPS @ 480V	KW LOAD	BREAKER SIZE (AMPS)
A1				HM1	9.17	4.4	15
A2				HM2	2.67	1.28	15
A3		TA5, TA6, TA7, TA8			3.08	1.48	15
A4	SA1, SA2, SA3, SA4, SA5				1.93	0.93	15
A5		TA1, TA2, TA3, TA4			3.08	1.48	15
SPARE							15
TOTAL	5	8	1	1	19.93	9.57	

2			
1			
Rev.	Date	Description	Approved
NORTH CAROLINA DEPARTMENT OF TRANSPORTATION ROADWAY DESIGN LIGHTING/ELECTRICAL SECTION LIGHTING LAYOUT ALSTON AVENUE/NC 147 INTERCHANGE DURHAM COUNTY Drawn By: AB Approved By: <i>PL</i> Dwg No.:			

07-APR-2015 11:40
 R:\Lighting\Lighting Design\3308_1&e_psh.e2.dgn
 labr.wml 11 10261639