

NOTES:

USE CLASS "B" CONCRETE THROUGHOUT.

ALL REINFORCING STEEL SHOULD BE ASTM A615-GRADE 60.

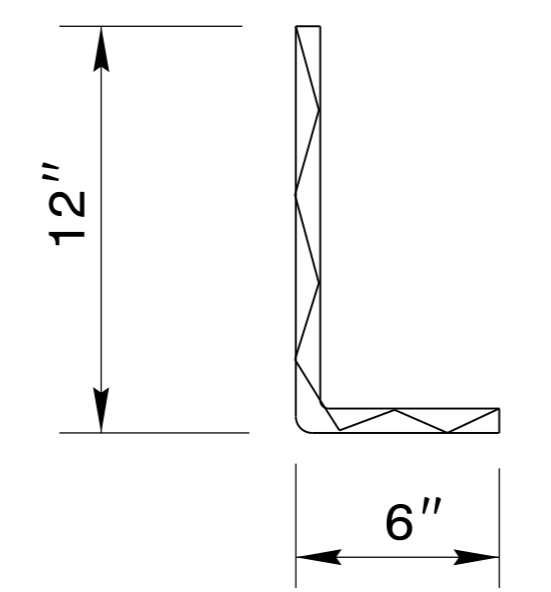
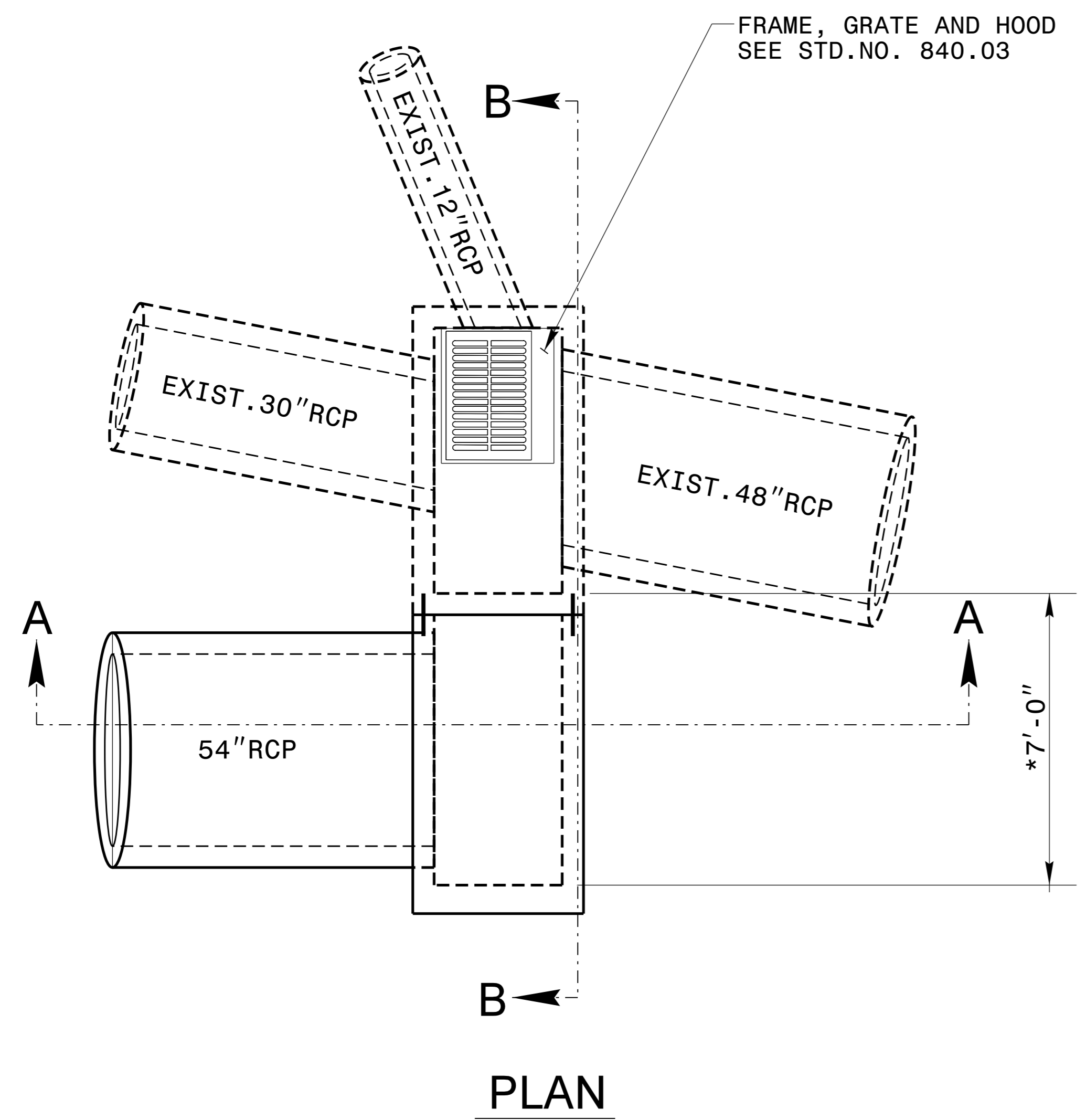
ALL REINFORCING STEEL SHOULD BE DEFORMED BARS. WHERE SPLICING OF REINFORCEMENT IS NECESSARY, BARS ARE TO BE LAPPED 45 DIAMETERS. ALL DIMENSIONS RELATIVE TO REINFORCEMENT ARE TO CENTERS OF BARS.

REINFORCING STEEL TO BE CUT, BENT OR RELOCATED TO POSITION CATCH BASIN AS DIRECTED BY THE ENGINEER.

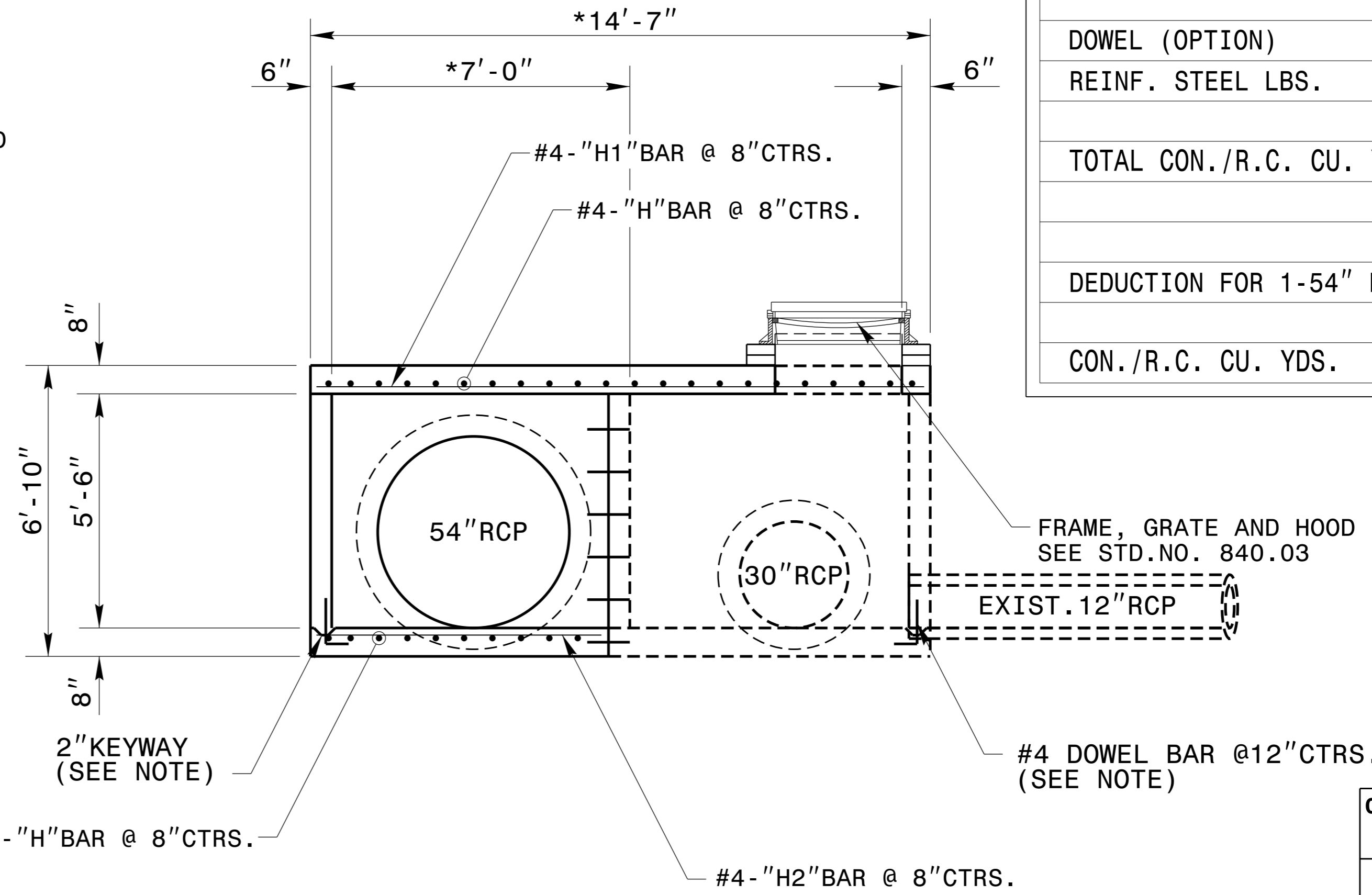
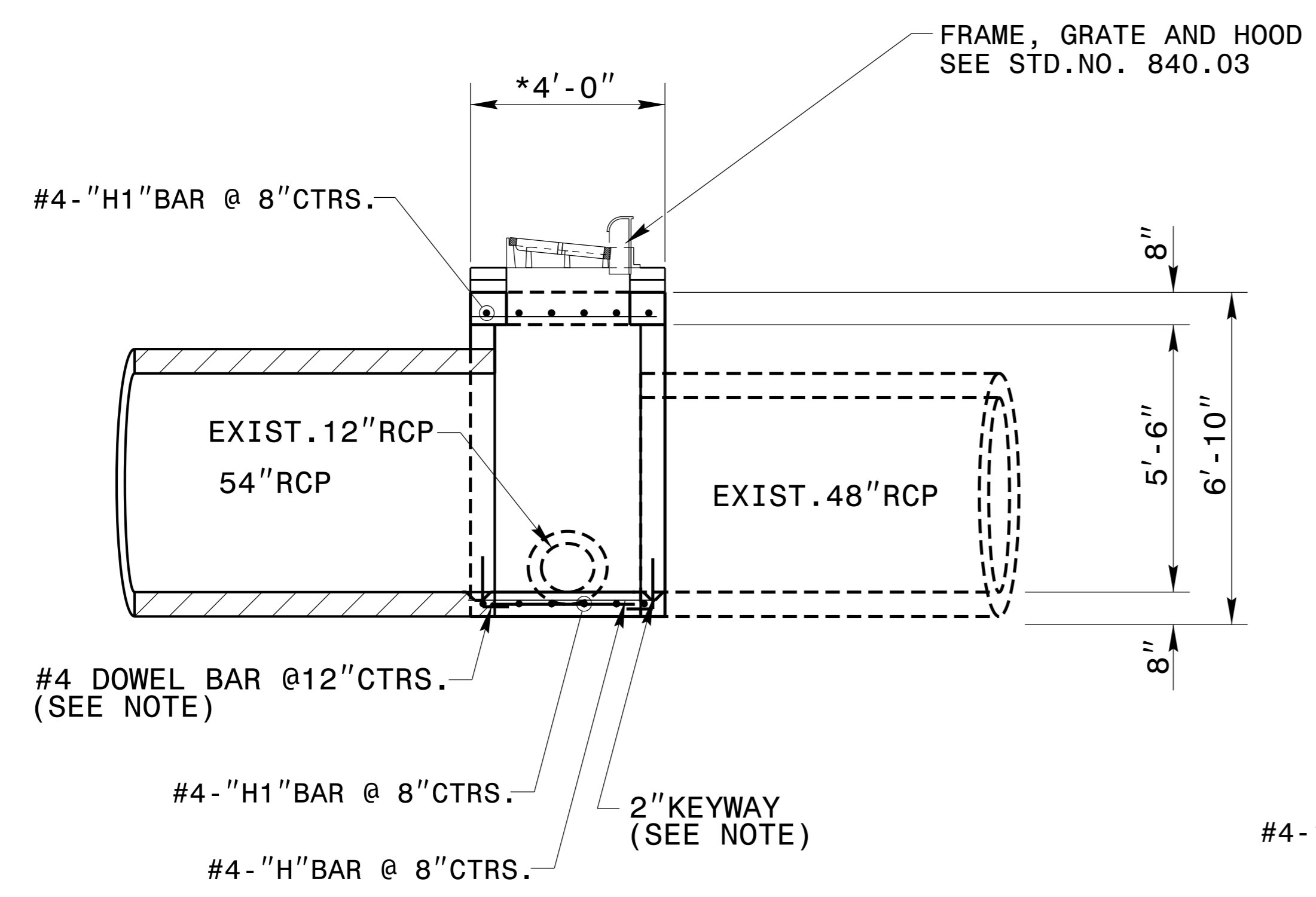
ALL EXPOSED CORNERS ARE TO BE CHAMFERED 1".

ALL MATERIAL AND WORKMANSHIP AS PER N.C. DEPARTMENT OF TRANSPORTATION STANDARD SPECIFICATIONS.

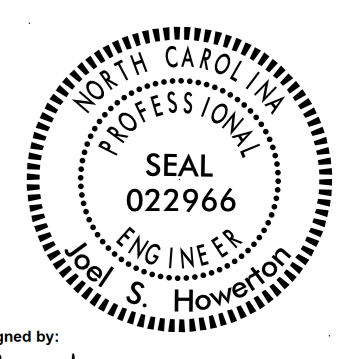
OPTIONAL CONSTRUCTION, MONOLITHIC POUR, 2" KEYWAY, OR #4 BAR DOWELS AT 12" CENTERS AS DIRECTED BY THE ENGINEER.



BILL OF MATERIAL				
REINFORCING STEEL				
BAR	SIZE	LENGTH	NO.	WEIGHT
H	#4	3'-8"	32	79
H1	#4	14'-3"	6	58
H2	#4	6'-8"	6	27
DOWEL (OPTION)			14	
REINF. STEEL LBS.				164
TOTAL CON./R.C. CU. YDS.				3.2
DEDUCTION FOR 1-54" RCP				-0.5
CON./R.C. CU. YDS.				2.7



* DIMENSIONS SHOULD BE FIELD VERIFIED.
* DIMENSIONS MAY BE ADJUSTED AS DIRECTED BY THE ENGINEER.



Designed by:
Joel Howerton
873F3D17DCDC45F... 5/17/2016

DOCUMENT NOT CONSIDERED FINAL UNLESS ALL SIGNATURES COMPLETED

CONTRACT SERVICES & DEVELOPMENT UNIT
STANDARDS AND SPECIAL DESIGN
Office 919-707-6900 FAX 919-250-4119

DETAIL OF TEMPORARY SPECIAL CATCH BASIN EXTENSION

ORIGINAL BY: _____ DATE: _____
 MODIFIED BY: rnbritt DATE: 05-16-2016
 CHECKED BY: _____ DATE: _____
 FILE SPEC.: details\nrbritt\english\urban\U3308 temp cb.dgn

C:\TIME\PROJECTS\CONCRETE\DRAWING\USER\NAME\$\$\$\$