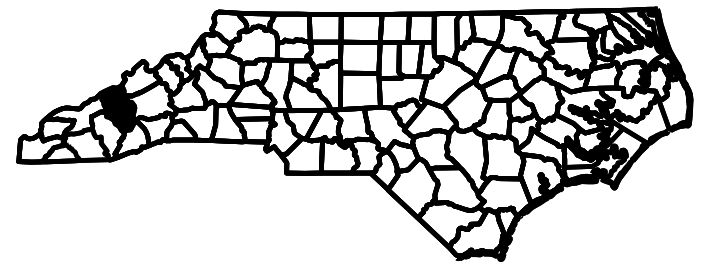
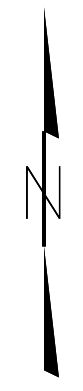
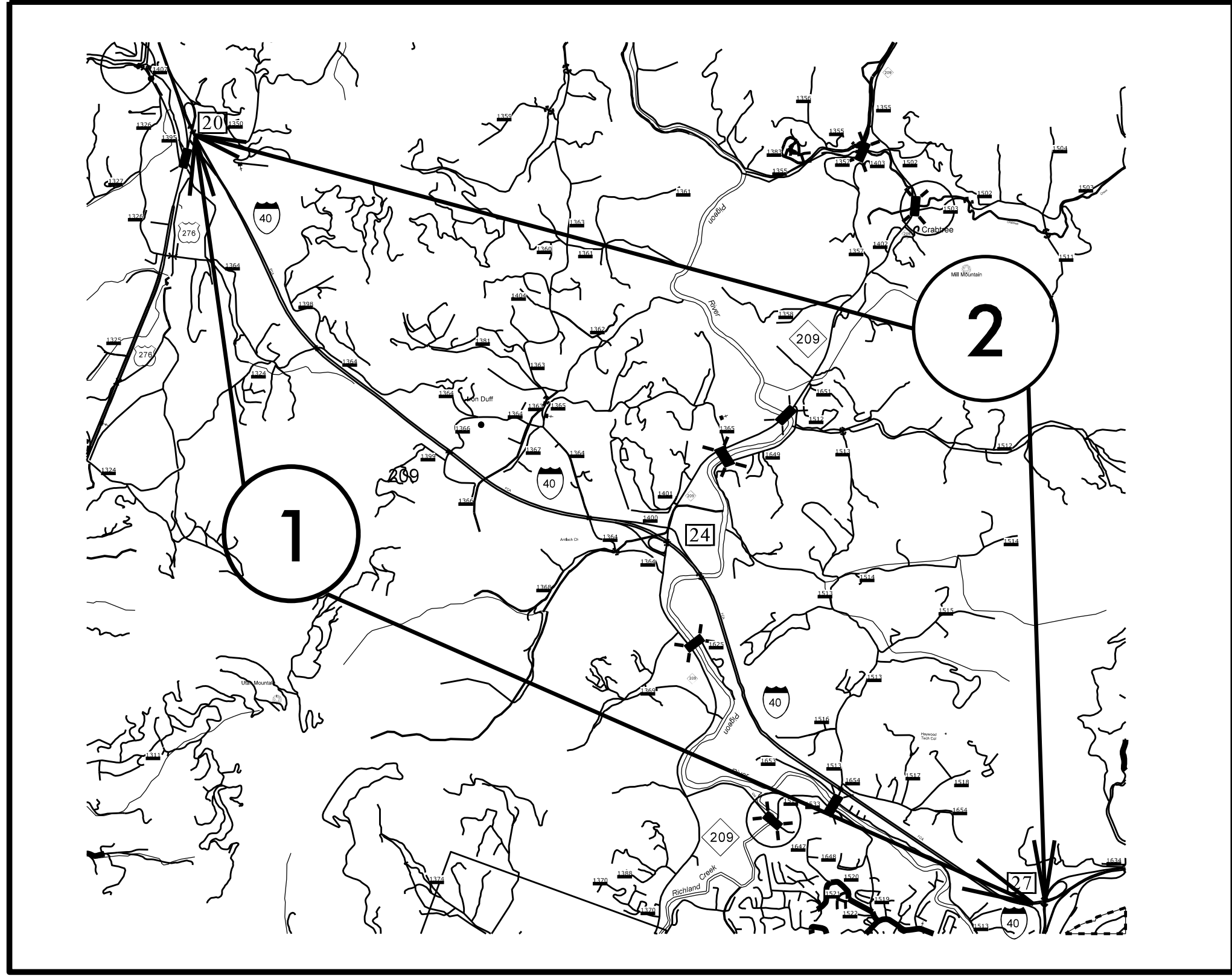


CONTRACT: C203761 **TIP PROJECT: I-5756**

HAYWOOD COUNTY

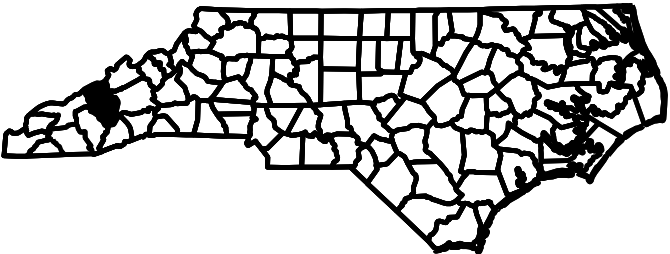
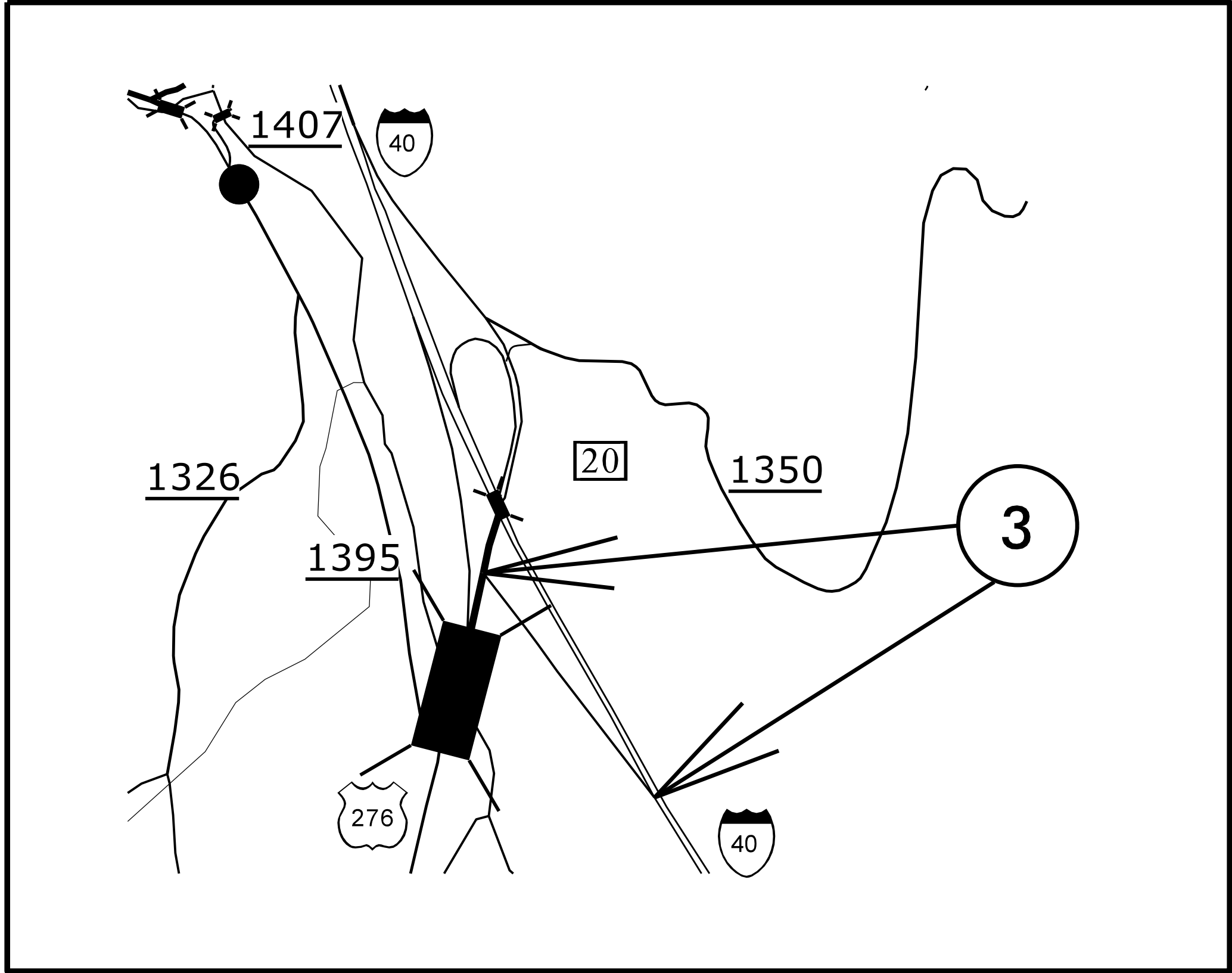
PROJECT REFERENCE NO.		SHEET NO.
I-5756		1
STATE PROJECT	F.A. PROJECT NO.	DESCRIPTION
52034.3.1	NHPP-0040(018)2	I-5756



HAYWOOD COUNTY

PROJECT REFERENCE NO.		SHEET NO.
I-5756		2
STATE PROJECT	F.A. PROJECT NO.	DESCRIPTION
52034.3.1	NHPP-0040(018)23	I-5756

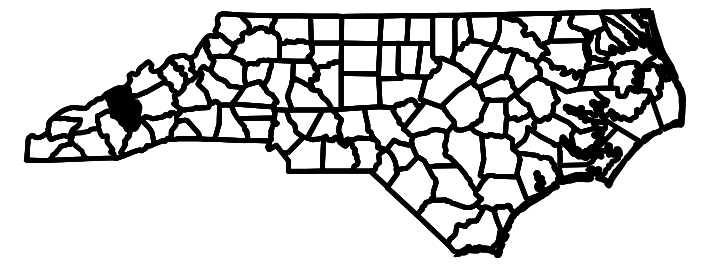
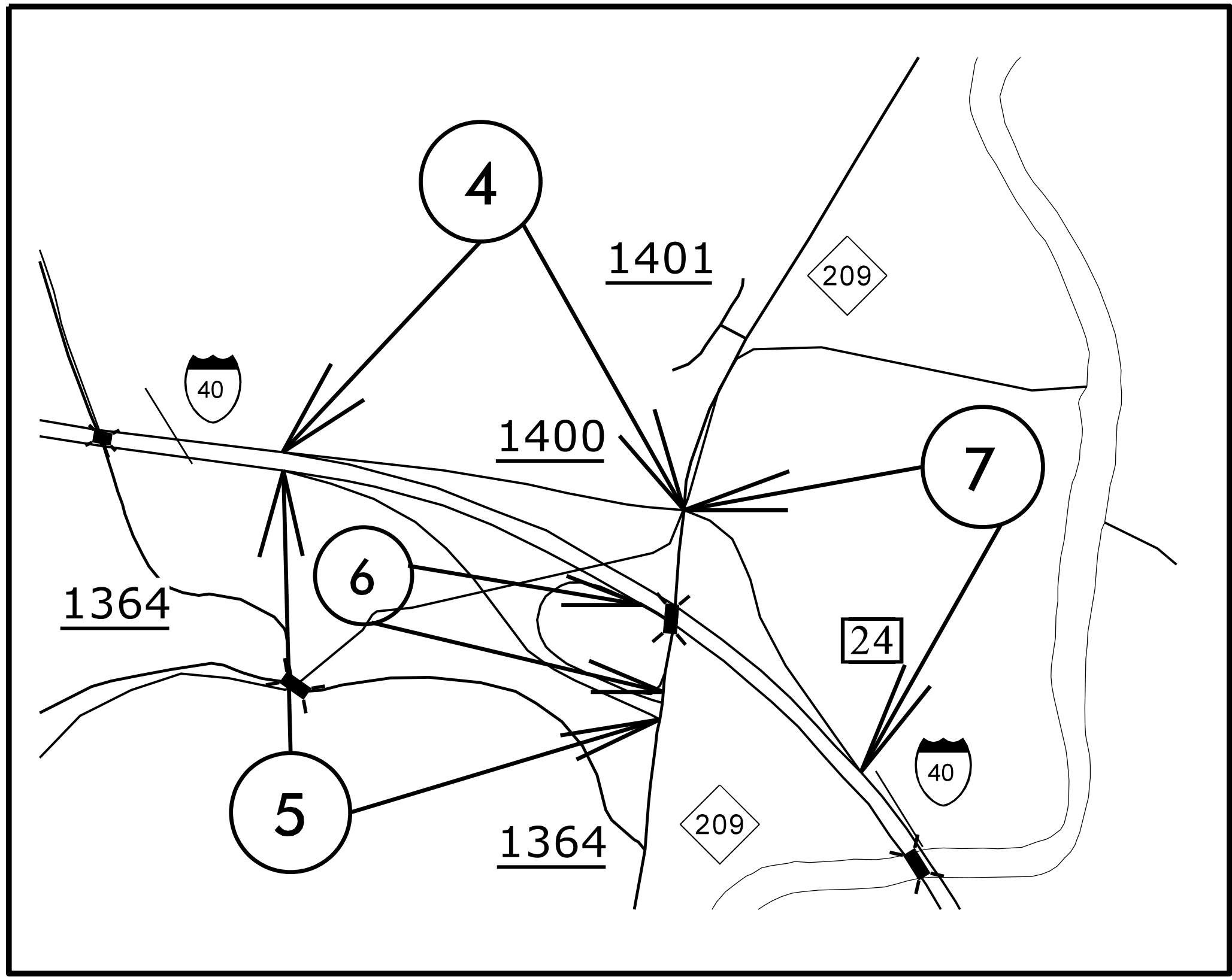
CONTRACT: C203761 TIP PROJECT: I-5756



CONTRACT: C203761 TIP PROJECT: I-5756

HAYWOOD COUNTY

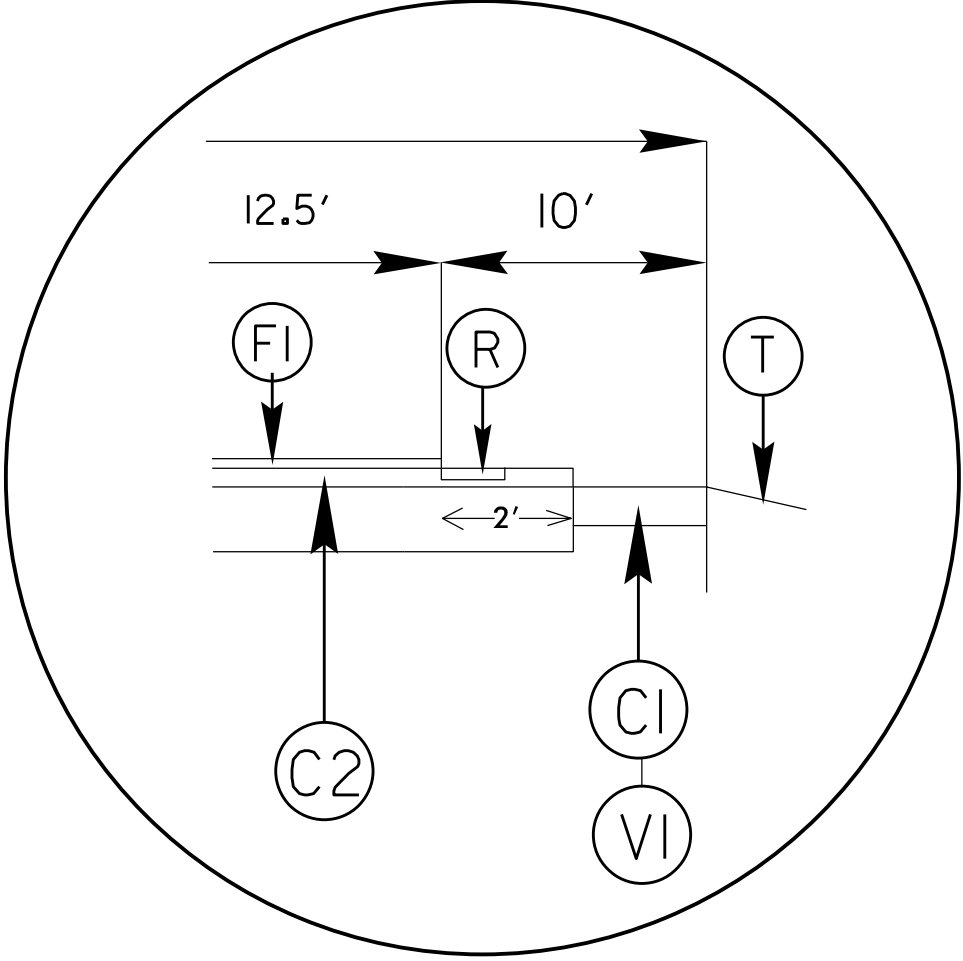
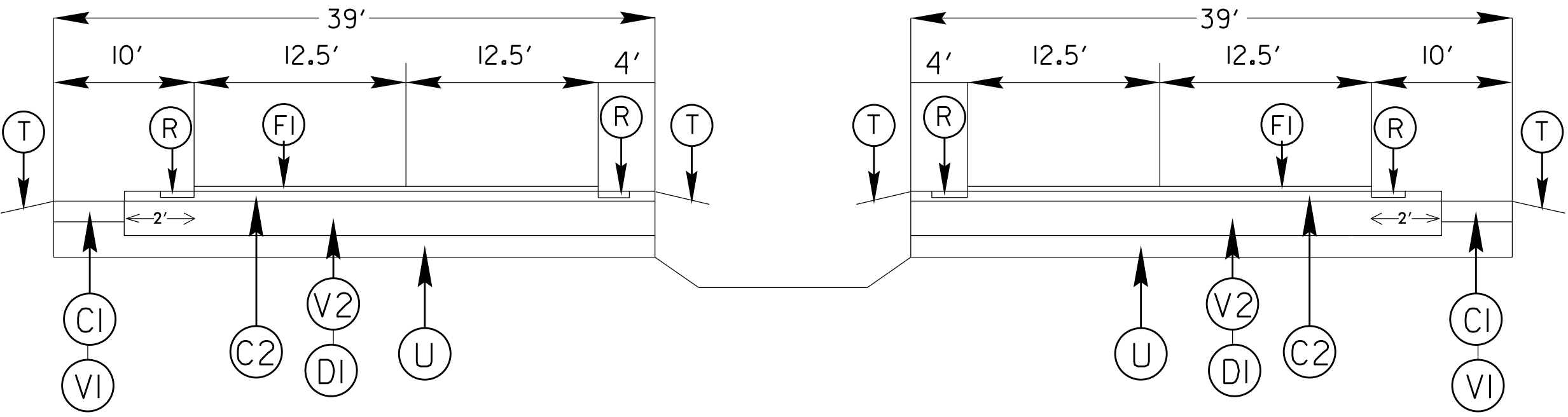
PROJECT REFERENCE NO.		SHEET NO.
I-5756		3
STATE PROJECT	F.A. PROJECT NO.	DESCRIPTION
52034.3.1	NHPP-0040(018)23	I-5756



050197

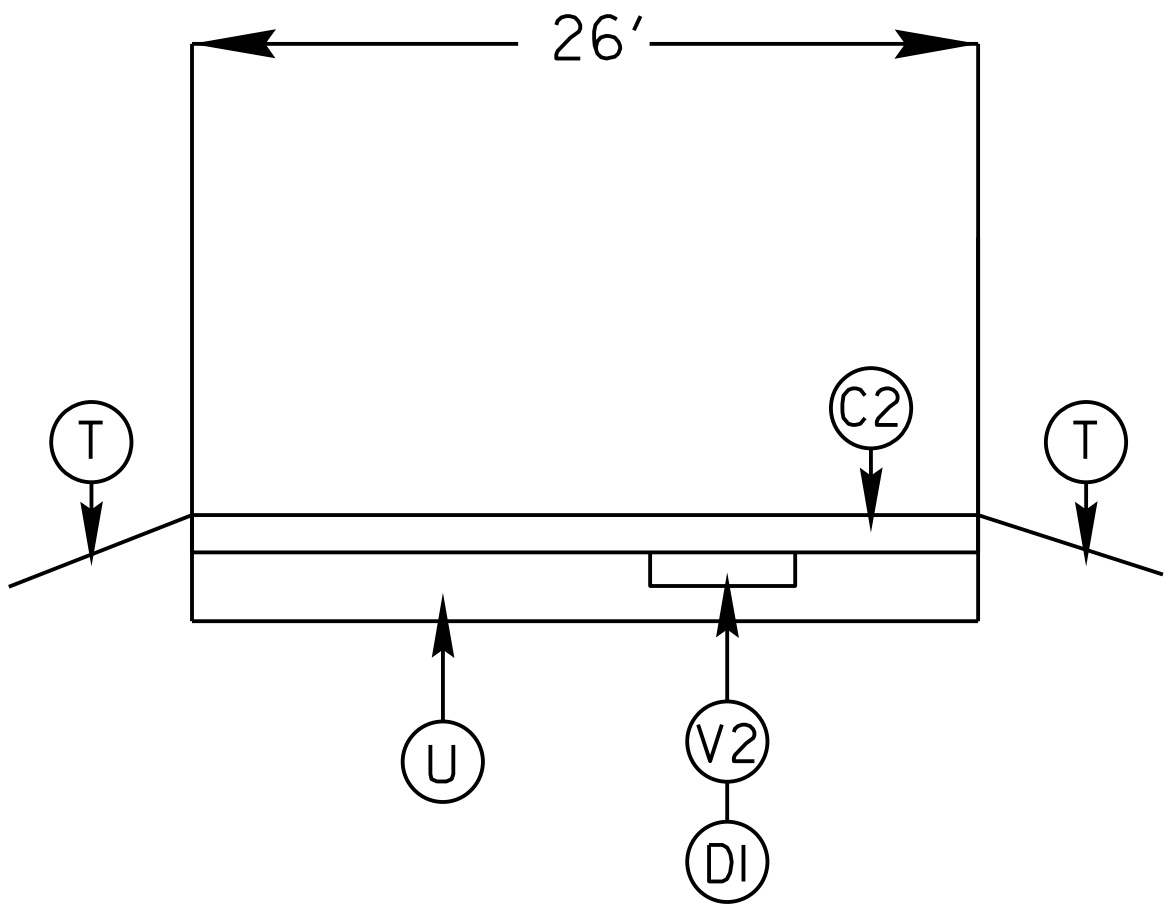
PROJECT REFERENCE NO.		SHEET NO.
I-5756		4
STATE PROJECT	F.A. PROJECT NO.	DESCRIPTION
52034.3.1	NHPP-0040(018)23	I-5756

TYPICAL 1

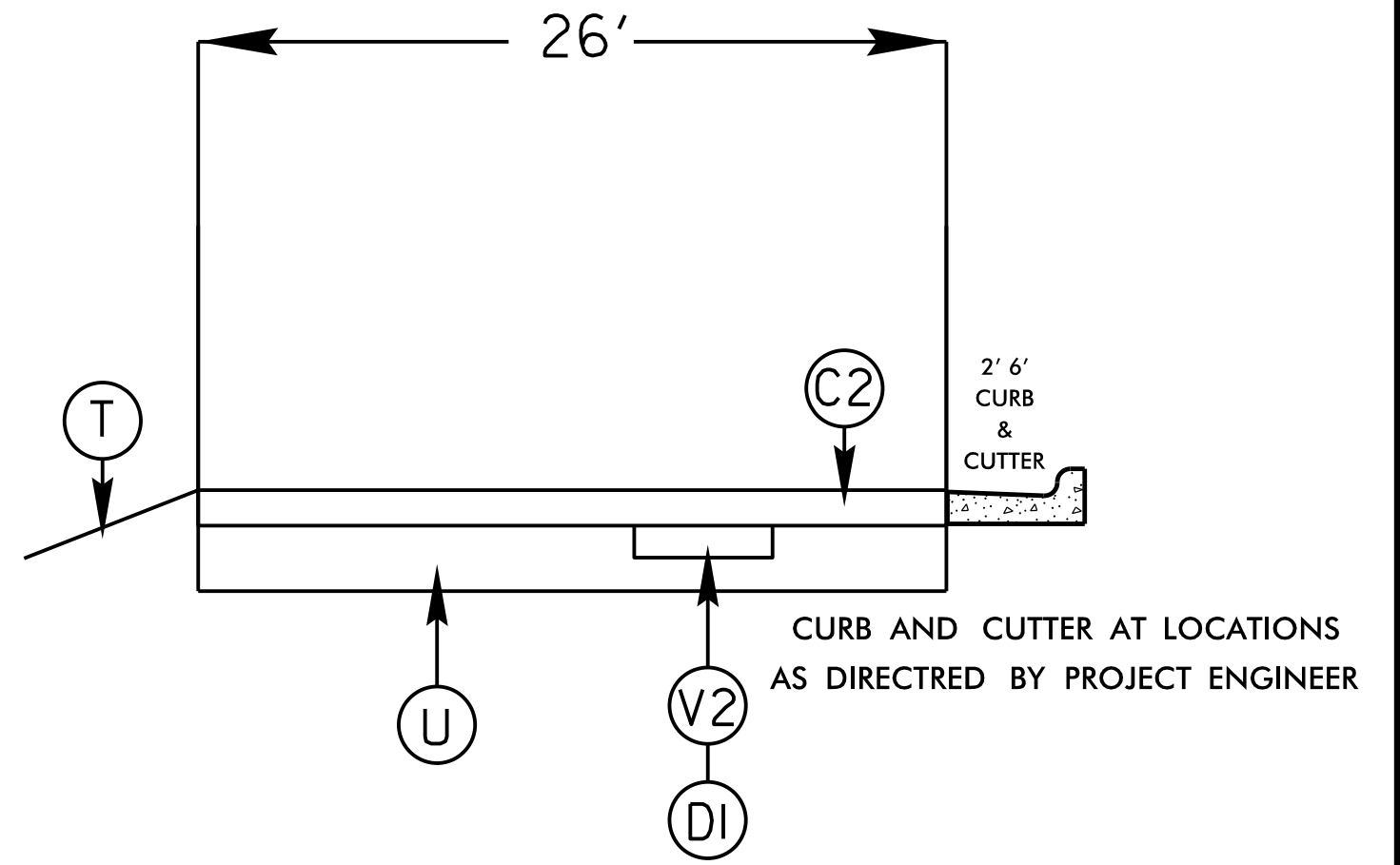


PROJECT REFERENCE NO.		SHEET NO.
I-5756		5
STATE PROJECT	F.A. PROJECT NO.	DESCRIPTION
52034.3.1	NHPP-0040(018)23	I-5756

TYPICAL 2



TYPICAL 3



CURB AND CUTTER AT LOCATIONS AS DIRECTED BY PROJECT ENGINEER

* NOTE: MILLING IN DISTRESSED AREAS AS DIRECTED BY PROJECT ENGINEER.

PROJECT REFERENCE NO.		SHEET NO.
I-5756		6
STATE PROJECT	F.A. PROJECT NO	DESCRIPTION
52034.3.1	NHPP-0040(018)23	I-5756

SURFACING SCHEDULE

ITEM NO	DESCRIPTION
C1	ASPHALT CONCRETE SURFACE COURSE, TYPE S9.5B, AT AN AVERAGE RATE OF 168 LBS. PER SQ. YD. (1 1/2")
C2	ASPHALT CONCRETE SURFACE COURSE, TYPE S9.5D, AT AN AVERAGE RATE OF 168 LBS. PER SQ. YD. (1 1/2")
D1	ASPHALT CONCRETE INTERMEDIATE COURSE, TYPE I19.0D, AT AN AVERAGE RATE OF 342 LBS. PER SQ. YD. (3")
F1	OPEN GRADED ASPHALT FRICTION COURSE, TYPE FC-2 MOD, AT AN AVERAGE RATE OF 90 LBS. PER SQ. YD.
R	MILLED RUMBLE STRIPS
V1	MILLING ASPHALT PAVEMENT 1 1/2 " IN DEPTH AS DIRECTED BY PROJECT ENGINEER.
V2	MILLING ASPHALT PAVEMENT 3" IN DEPTH AS DIRECTED BY PROJECT ENGINEER.
U	EXISTING PAVEMENT

PROJECT NO.	SHEET NO.	TOTAL NO.
I-5756	7	

SUMMARY OF QUANTITIES

PROJECT NO	COUNTY	MAP NO	ROUTE	DESCRIPTION	TYP	LANES	FINAL SURFACE TESTING REQUIRED	WARM MIX ASPHALT REQUIRED	LENGTH MI	WIDTH FT	BORROW EXCAVATION CY	SHOULDER RECONSTRUCTION SMI	1 1/2" MILLING SY	3" MILLING SY	INCIDENTAL MILLING SY	INTER-MEDIATE COURSE, 119.0D TONS	SURFACE COURSE, S9.5B TONS	SURFACE COURSE, S9.5D TONS	ASPHALT BINDER FOR PLANT MIX TONS	POLYMER MODIFIED ASPHALT BINDER FOR PLANT MIX TONS	OGAFC, TYPE FC-1 MOD TONS	MILLED RUMBLE STRIPS (ASPHALT CEMENT CONCRETE) LF	FRAME WITH GRATE & HOOD, STD 840.03, TYPE F EA	2'-6" CURB & GUTTER LF	REPAIR OF DRAINAGE STRUCTURE EA	STEEL BM GUARDRAIL LF	ADDITIONAL GUARDRAIL POSTS EA	GUARDRAIL ANCHOR UNITS, TYPE III EA	GUARDRAIL ANCHOR UNITS, TYPE 350 EA	REMOVE EXISTING GUARDRAIL LF	PORTABLE LIGHTING LS			
I-5756	Haywood	1	I-40 EBL	FROM MM 20.5 TO MM 27	1	2	YES	NO	6.5	38	1,907	13.00	750	118,214	1,650	22,008	3,503	10,518	1,201	864	4,335	68,640				51,050	10	21	34	53,072	1			
		2	I-40 WBL	FROM MM20.5 TO MM27	1	2	YES	NO	6.5	38	1,907	13.00	750	118,214	1,650	22,008	3,503		1,201	264	4,335	68,640				51,050	10	21	34	53,072				
		3	ACCESS RAMP I-40 EAST	ACCESS TO I-40 EASTBOUND FROM US 276	2	2	NO	NO	0.4	26	59	0.80			450		85		556	4	32													
		4	ACCESS RAMP I-40 WEST	WESTBOUND EXIT 24 TO NC 209	2	1	NO	NO	0.45	26	88	0.90			4,200		785		626	35	36													
		5	EXIT RAMP I-40 WEST	WESTBOUND EXIT 24 TO NC 209	2	2	NO	NO	0.29	26	86	0.58			700		130		403	6	23													
		6	ACCESS RAMP I-40 EAST	EASTBOUND ACCESS TO I-40 FROM NC 209	3	2	NO	NO	0.35	26	103	0.70			1,550		300		487	14	28			1	25	1								
		7	EXIT RAMP I-40 EAST	EASTBOUND EXIT 24 TO NC 209	2	2	NO	NO	0.42	26	176	0.84			4,470		847		584	38	33													
TOTAL FOR PROJ NO. I-5756									14.91		4,326	29.82	1,500	247,798	3,300	46,163	7,006	13,174	2,499	1,280	8,670	137,280	1	25	1	102,100	20	42	68	106,144	1			
GRAND TOTAL									14.91		4,326	29.82	1,500	247,798	3,300	46,163	7,006	13,174	2,499	1,280	8,670	137,280	1	25	1	102,100	20	42	68	106,144	1			

THERMOPLASTIC AND PAINT QUANTITIES

PROJECT NO	COUNTY	MAP NO	ROUTE	DESCRIPTION	TYP	LANES	LENGTH	WIDTH	4695000000-E	4702000000-E	4725000000-E		4810000000-E		4815000000-E		4890000000-E		4890000000-E		4905000000-N		
									8" X 90 M WHITE THERMO LF	12" X 120 M WHITE THERMO LF	MERGE ARROW 90 M EA	RAMP ARROW 90 M WHITE EA	4" WHITE PAINT LF	4" YELLOW PAINT LF	6" WHITE PAINT LF	6" YELLOW PAINT LF	50 MIL 6" WHITE THERMO LF	50 MIL 6" YELLOW THERMO LF	50 MIL 4" WHITE THERMO LF	50 MIL 4" YELLOW THERMO LF	SNOW PLOWABLE MARKERS EA		
I-5756	Haywood	1	I-40 EBL	FROM MM 20.5 TO MM 27	1	2	6.5	38	500	210					86,030	69,290	44,200	34,320				455	
		2	I-40 WBL	FROM MM20.5 TO MM27	1	2	6.5	38	500	210					105,560	69,290	44,200	34,320				455	
		3	ACCESS RAMP I-40 EAST	ACCESS TO I-40 EASTBOUND FROM US 276	2	2	0.4	26				3		2,112	2,112						2,112	2,112	28
		4	ACCESS RAMP I-40 WEST	WESTBOUND EXIT 24 TO NC 209	2	1	0.45	26				3		9,684	10,692						2,376	2,376	14
		5	EXIT RAMP I-40 WEST	WESTBOUND EXIT 24 TO NC 209	2	2	0.29	26				1		1,532	1,532						1,532	1,532	14
		6	ACCESS RAMP I-40 EAST	EASTBOUND ACCESS TO I-40 FROM NC 209	3	2	0.35	26				3		1,848	1,848						1,848	1,848	10
		7	EXIT RAMP I-40 EAST	EASTBOUND EXIT 24 TO NC 209	2	2	0.42	26					1	2,218	2,218						2,218	2,218	28
TOTAL FOR PROJ NO. I-5756									14.91		1,000	420	9	2	17,394	18,402	191,590	138,580	88,400	68,640	10,086	10,086	1,004
GRAND TOTAL									14.91		1,000	420	11	2	17,394	18,402	330,170	138,580	88,400	68,640	10,086	10,086	1,004

* Note: This quantity does not include the additional amount needed by Traffic Control.

PROJECT NO.	SHEET NO.	TOTAL NO.
I-5756	7	

SUMMARY OF QUANTITIES

PROJECT NO	COUNTY	MAP NO	ROUTE	DESCRIPTION	TYP	LANES	FINAL SURFACE TESTING REQUIRED	WARM MIX ASPHALT REQUIRED	LENGTH MI	WIDTH FT	BORROW EXCAVATION CY	SHOULDER RECONSTRUCTION SMI	1 1/2" MILLING SY	3" MILLING SY	INCIDENTAL MILLING SY	INTER-MEDIATE COURSE, 119.00 TONS	SURFACE COURSE, S9.5B TONS	SURFACE COURSE, S9.5D TONS	ASPHALT BINDER FOR PLANT MIX TONS	POLYMER MODIFIED ASPHALT BINDER FOR PLANT MIX TONS	OGAFC, TYPE FC-1 MOD TONS	MILLED RUMBLE STRIPS (ASPHALT CEMENT CONCRETE) LF	FRAME WITH GRATE & HOOD, STD 840.03, TYPE F EA	2'-6" CURB & GUTTER LF	REPAIR OF DRAINAGE STRUCTURE EA	STEEL BM GUARDRAIL LF	ADDITIONAL GUARDRAIL POSTS EA	GUARDRAIL ANCHOR UNITS, TYPE III EA	GUARDRAIL ANCHOR UNITS, TYPE 350 EA	REMOVE EXISTING GUARDRAIL LF	PORTABLE LIGHTING LS			
I-5756	Haywood	1	I-40 EBL	FROM MM 20.5 TO MM 27	1	2	YES	NO	6.5	38	1,907	13.00	750	118,214	1,650	22,008	3,503	10,518	1,201	864	4,335	68,640				51,050	10	21	34	53,072	1			
		2	I-40 WBL	FROM MM20.5 TO MM27	1	2	YES	NO	6.5	38	1,907	13.00	750	118,214	1,650	22,008	3,503	10,518	1,201	264	4,335	68,640				51,050	10	21	34	53,072				
		3	ACCESS RAMP I-40 EAST	ACCESS TO I-40 EASTBOUND FROM US 276	2	2	NO	NO	0.4	26	59	0.80			450		85		556	4	32													
		4	ACCESS RAMP I-40 WEST	WESTBOUND EXIT 24 TO NC 209	2	1	NO	NO	0.45	26	88	0.90			4,200		785		626	35	36													
		5	EXIT RAMP I-40 WEST	WESTBOUND EXIT 24 TO NC 209	2	2	NO	NO	0.29	26	86	0.58			700		130		403	6	23													
		6	ACCESS RAMP I-40 EAST	EASTBOUND ACCESS TO I-40 FROM NC 209	3	2	NO	NO	0.35	26	103	0.70			1,550		300		487	14	28			1	25	1								
		7	EXIT RAMP I-40 EAST	EASTBOUND EXIT 24 TO NC 209	2	2	NO	NO	0.42	26	176	0.84			4,470		847		584	38	33													
TOTAL FOR PROJ NO. I-5756									14.91		4,326	29.82	1,500	247,798	3,300	46,163	7,006	23,692	2,499	1,280	8,670	137,280	1	25	1	102,100	20	42	68	106,144	1			
GRAND TOTAL									14.91		4,326	29.82	1,500	247,798	3,300	46,163	7,006	23,692	2,499	1,280	8,670	137,280	1	25	1	102,100	20	42	68	106,144	1			

THERMOPLASTIC AND PAINT QUANTITIES

PROJECT NO	COUNTY	MAP NO	ROUTE	DESCRIPTION	TYP	LANES	LENGTH	WIDTH	4695000000-E	4702000000-E	4725000000-E		4810000000-E		4815000000-E		4890000000-E		4890000000-E		4905000000-N		
									8" X 90 M WHITE THERMO LF	12" X 120 M WHITE THERMO LF	MERGE ARROW 90 M EA	RAMP ARROW 90 M WHITE EA	4" WHITE PAINT LF	4" YELLOW PAINT LF	6" WHITE PAINT LF	6" YELLOW PAINT LF	50 MIL 6" WHITE THERMO LF	50 MIL 6" YELLOW THERMO LF	50 MIL 4" WHITE THERMO LF	50 MIL 4" YELLOW THERMO LF	SNOW PLOWABLE MARKERS EA		
I-5756	Haywood	1	I-40 EBL	FROM MM 20.5 TO MM 27	1	2	6.5	38	500	210					86,030	69,290	44,200	34,320				455	
		2	I-40 WBL	FROM MM20.5 TO MM27	1	2	6.5	38	500	210					105,560	69,290	44,200	34,320				455	
		3	ACCESS RAMP I-40 EAST	ACCESS TO I-40 EASTBOUND FROM US 276	2	2	0.4	26				3		2,112	2,112					2,112	2,112		28
		4	ACCESS RAMP I-40 WEST	WESTBOUND EXIT 24 TO NC 209	2	1	0.45	26				3		9,684	10,692					2,376	2,376		14
		5	EXIT RAMP I-40 WEST	WESTBOUND EXIT 24 TO NC 209	2	2	0.29	26				1		1,532	1,532					1,532	1,532		14
		6	ACCESS RAMP I-40 EAST	EASTBOUND ACCESS TO I-40 FROM NC 209	3	2	0.35	26				3		1,848	1,848					1,848	1,848		10
		7	EXIT RAMP I-40 EAST	EASTBOUND EXIT 24 TO NC 209	2	2	0.42	26					1	2,218	2,218					2,218	2,218		28
TOTAL FOR PROJ NO. I-5756									14.91		1,000	420	9	2	17,394	18,402	191,590	138,580	88,400	68,640	10,086	10,086	1,004
GRAND TOTAL									14.91		1,000	420	11	2	17,394	18,402	330,170	138,580	88,400	68,640	10,086	10,086	1,004

* Note: This quantity does not include the additional amount needed by Traffic Control.

