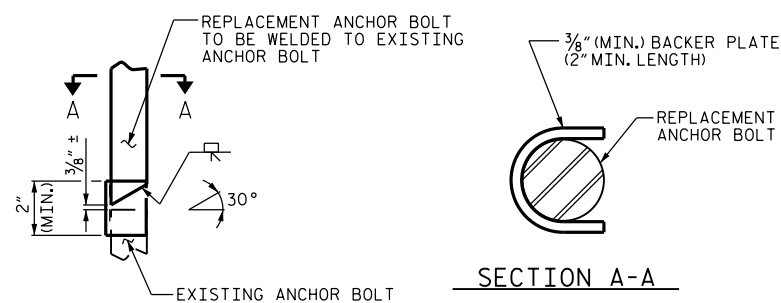


SECTION AT BEARING



DETAIL A

ANCHOR BOLT WELD DETAIL

CONSTRUCTION SEQUENCE:

JACK BRIDGE AND CHIP OUT AROUND DAMAGED ANCHOR BOLT. REMOVE CONCRETE BELOW UNDAMAGED AREA ENOUGH TO CUT AND PREPARE FOR WELDING.

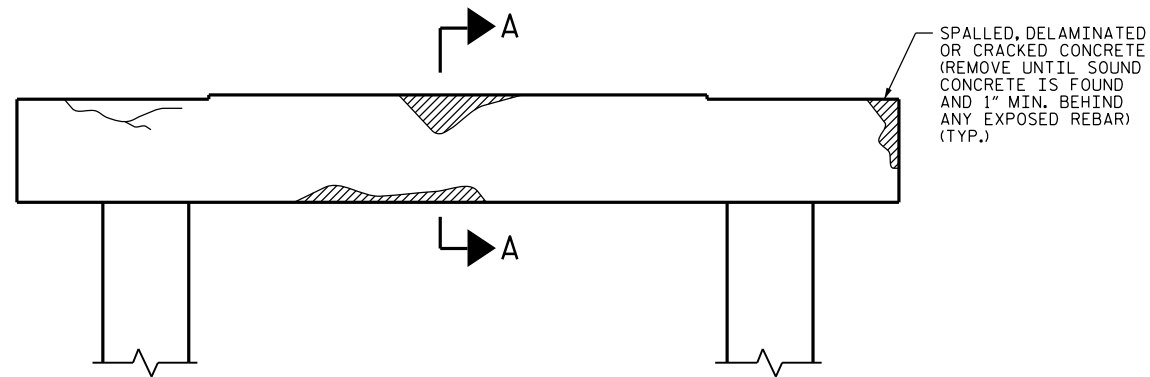
WELD ANCHOR BOLT AS SHOWN ABOVE.

ALL WELDS NEED TO BE APPROVED BY THE NCDOT MATERIALS AND TEST UNIT BEFORE RECASTING CONCRETE AT BRIDGE SEAT.

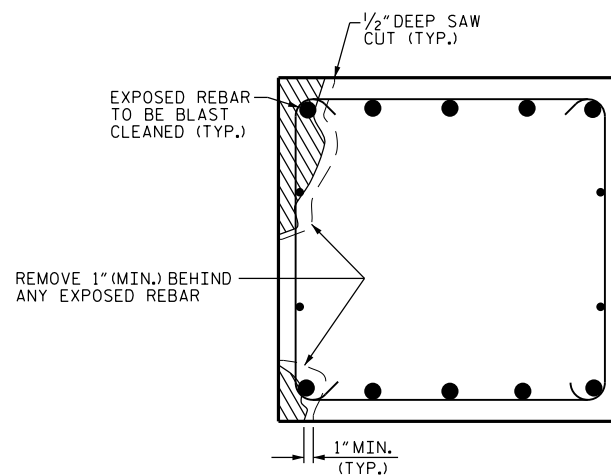
REPAIR BRIDGE SEAT IN ACCORDANCE WITH THE SPECIAL PROVISION FOR CONCRETE REPAIR.

REMOVE JACKS.

ANCHOR BOLT REPAIR

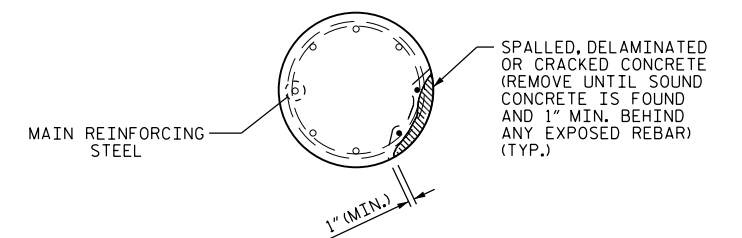


BENT CAP REPAIRS

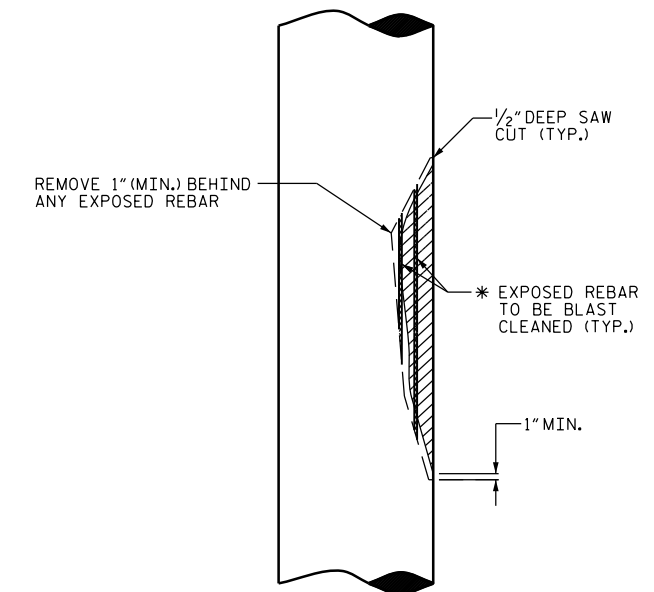


SECTION A-A

CAP REPAIR



PLAN OF COLUMN



* REPAIR LENGTH SHALL NOT EXCEED 10 FEET.

ELEVATION OF CAP

COLUMN REPAIR

NOTE

TYPICAL REPAIRS FOR ROUND-COLUMNED BENTS ARE SHOWN. REPAIR DETAILS SIMILAR FOR END BENT CAPS AND SQUARE-COLUMNED BENTS.

PROJECT NO. I-5756
HAYWOOD COUNTY
 BRIDGE NO. 183, 205, 208, 209,
222, 223, 224, 228, 230, 231, 232

DocuSigned by:
John A. Yannaccone
 7BC36E9CE
 NORTH CAROLINA
 PROFESSIONAL
 SEAL
 32492
 ENGINEER
 JOHN A. YANNACCONI
 3/21/2016

STATE OF NORTH CAROLINA
 DEPARTMENT OF TRANSPORTATION
 RALEIGH
 TYPICAL CAP
 AND COLUMN
 REPAIR DETAILS

DRAWN BY : J. YANNACCONI DATE : 1/16
 CHECKED BY : S. WANCE DATE : 1/16

DOCUMENT NOT CONSIDERED
 FINAL UNLESS ALL
 SIGNATURES COMPLETED

REVISIONS						SHEET NO.
NO.	BY:	DATE:	NO.	BY:	DATE:	TOTAL SHEETS
1			3			122
2			4			122