

NOTES

FOR BRIDGE JOINT DEMOLITION, SEE SPECIAL PROVISIONS.
 FOR ELASTOMERIC CONCRETE, SEE SPECIAL PROVISIONS.
 FOR FOAM JOINT SEALS, SEE SPECIAL PROVISIONS.
 THE INSTALLED FOAM JOINT SEALS SHALL BE WATERTIGHT.
 NOMINAL UNCOMPRESSED SEAL WIDTH OF FOAM JOINT SEAL SHALL BE 2".
 THE CONTRACTOR WILL NOT BE PERMITTED TO FORM THE JOINT FOR THE FOAM JOINT SEAL IN LIEU OF SAWING THE JOINT.
 FOR ADHESIVELY ANCHORED DOWELS, NO FIELD TESTING IS REQUIRED. FOR ADHESIVELY ANCHORED ANCHOR BOLTS OR DOWELS, SEE ARTICLE 420-13 OF THE STANDARD SPECIFICATIONS.
 PLACE #4 S1 AND #4 S2 BARS PARALLEL TO BRIDGE CENTERLINE.
 CONSTRUCTION JOINT SHALL BE PERPENDICULAR TO THE FILL FACE OF THE END BENT.

BILL OF MATERIAL

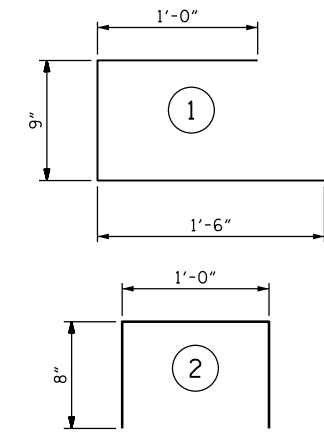
FOR ONE END BENT JOINT

BAR	NO.	SIZE	TYPE	LENGTH	WEIGHT
D1	4	#4	STR	1'-6"	4
K1	2	#4	STR	25'-3"	34
K2	2	#4	STR	18'-0"	24
K3	3	#4	STR	6'-0"	12
K4	3	#4	STR	10'-2"	20
S1	16	#4	1	3'-3"	35
S2	24	#4	2	2'-4"	37

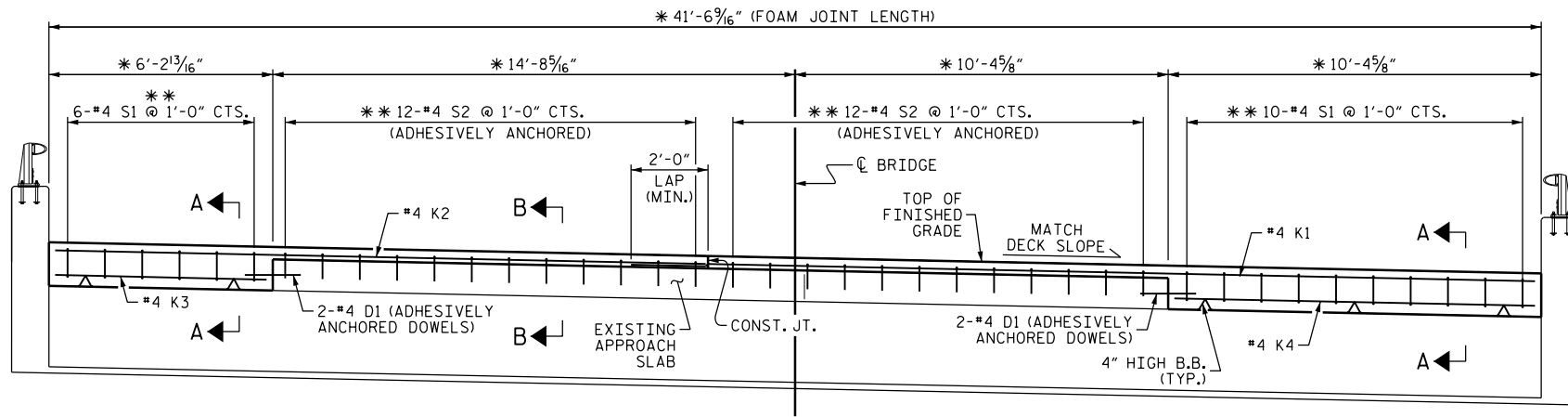
REINFORCING STEEL (FOR ONE END BENT JOINT) 166 LBS.

CLASS AA CONCRETE (FOR ONE END BENT JOINT) 2.3 CU. YDS.

BAR TYPES

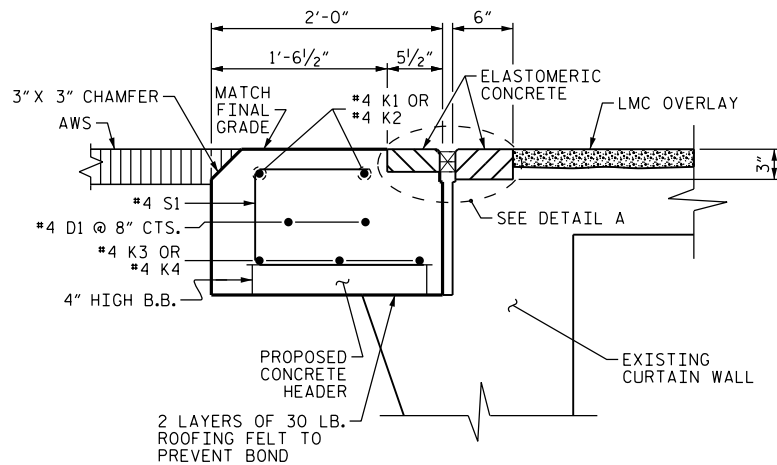


ALL BAR DIMENSIONS ARE OUT TO OUT.

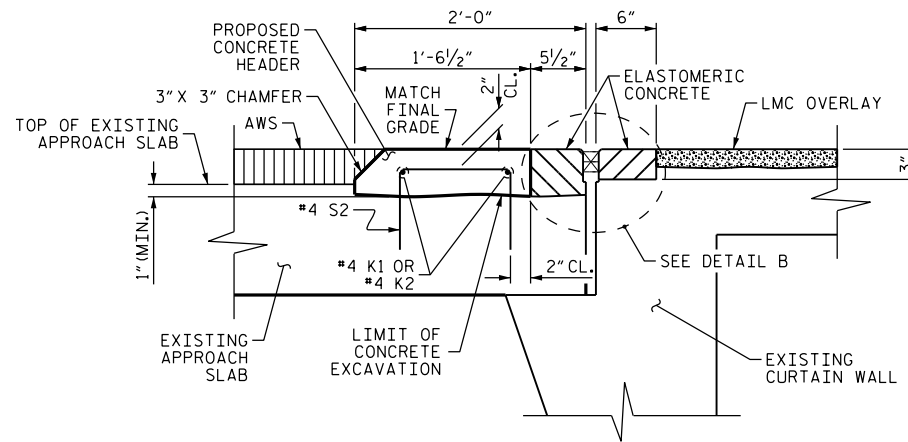


TYPICAL SECTION
 (FILL FACE END BENT 1 SHOWN, END BENT 2 SIMILAR.)

* DIMENSION MEASURED ALONG FILL FACE
 ** BAR SPACING MEASURED PERPENDICULAR TO BRIDGE CENTERLINE



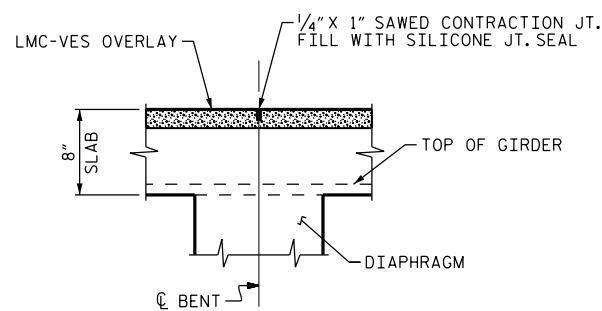
SECTION A-A



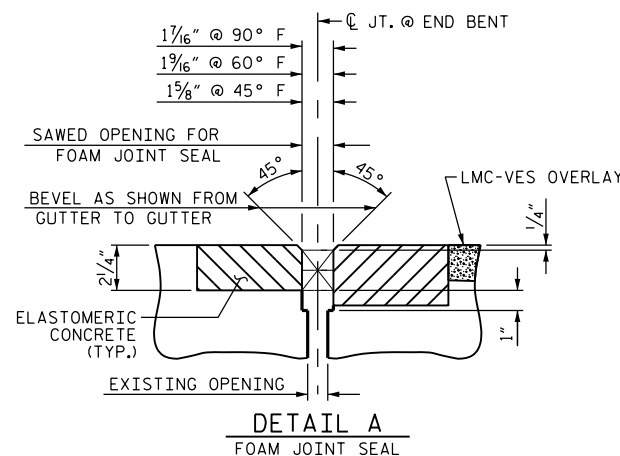
SECTION B-B

ELASTOMERIC CONCRETE		
END BENT 1	11.0	(CU. FT.)
END BENT 2	11.0	(CU. FT.)
* TOTAL	22.0	(CU. FT.)

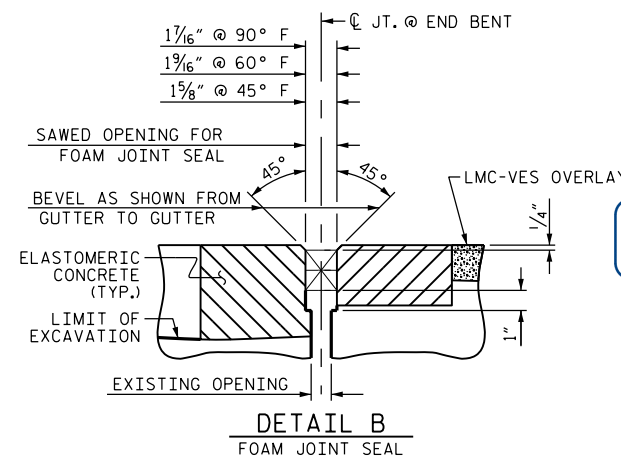
* BASED ON THE MINIMUM BLOCKOUT SHOWN.



SECTION C-C



DETAIL A
 FOAM JOINT SEAL

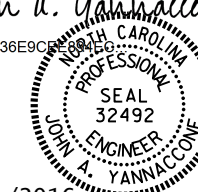


DETAIL B
 FOAM JOINT SEAL

DocuSigned by:

John A. Yannaccone

7BC36E9C...



3/21/2016

PROJECT NO. I-5756
 HAYWOOD COUNTY
 BRIDGE NO. 231

STATE OF NORTH CAROLINA
 DEPARTMENT OF TRANSPORTATION
 RALEIGH

JOINT DETAILS

DRAWN BY: J. YANNACCONE DATE: 3/16
 CHECKED BY: S. WANCE DATE: 3/16

DOCUMENT NOT CONSIDERED
 FINAL UNLESS ALL
 SIGNATURES COMPLETED

REVISIONS						SHEET NO.
NO.	BY:	DATE:	NO.	BY:	DATE:	S-105
1			3			TOTAL SHEETS
2			4			122