

NOTES

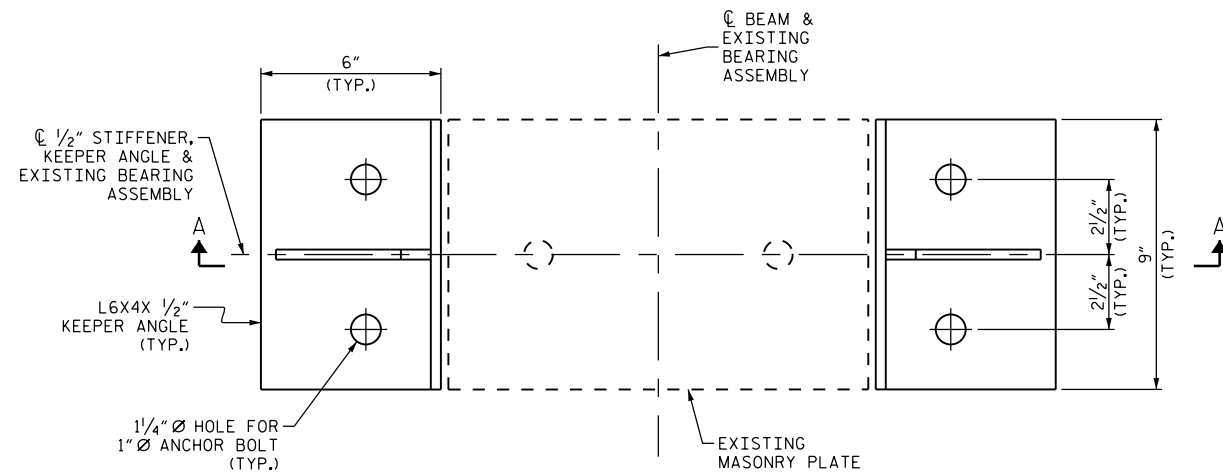
STRUCTURAL STEEL SHALL BE AASHTO GRADE 36 OR GREATER.

STRUCTURAL STEEL, ANCHOR BOLTS, NUTS AND WASHERS SHALL BE GALVANIZED IN ACCORDANCE WITH THE STANDARD SPECIFICATIONS.

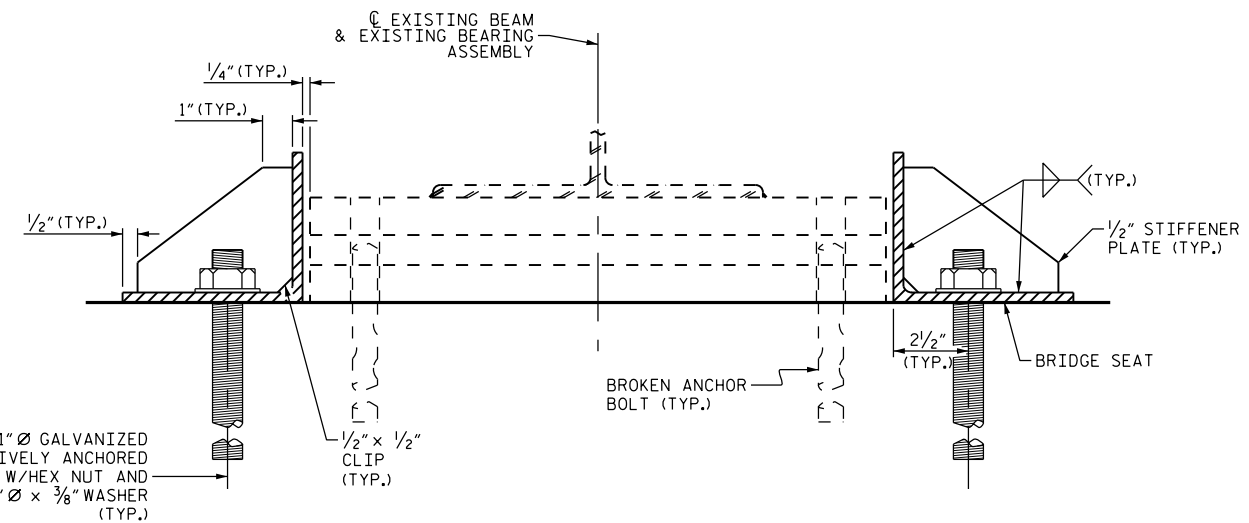
ANCHOR BOLTS SHALL MEET THE REQUIREMENTS OF ASTM A449. NUTS SHALL MEET THE REQUIREMENTS OF AASHTO M291-DH OR AASHTO M292-2H. WASHERS SHALL MEET THE REQUIREMENTS OF AASHTO M293. SHOP DRAWINGS ARE REQUIRED FOR ANCHOR BOLTS, NUTS AND WASHERS. SHOP INSPECTION IS NOT REQUIRED.

THE CONTRACTOR MAY USE ADHESIVELY ANCHORED ANCHOR BOLTS. NO FIELD TESTING IS REQUIRED. FOR ADHESIVELY ANCHORED ANCHOR BOLTS OR DOWELS, SEE SECTION 420 OF THE STANDARD SPECIFICATIONS.

FOR STEEL KEEPER ANGLE ASSEMBLY, SEE SPECIAL PROVISIONS.



PLAN



SECTION A-A
(LOCATION OF EXISTING ANCHOR BOLTS AS SHOWN IS FOR ILLUSTRATION ONLY)

STEEL KEEPER ANGLE ASSEMBLY DETAILS

PROJECT NO. I-5756
HAYWOOD COUNTY
 BRIDGE NO. 228

STEEL KEEPER ANGLE ASSEMBLY	
EACH	
ESTIMATE	ACTUAL
4	

DocuSigned by:
John A. Yannaccone
 7BC36E9C804E0

 3/21/2016

STATE OF NORTH CAROLINA
 DEPARTMENT OF TRANSPORTATION
 RALEIGH
STEEL KEEPER ANGLE ASSEMBLY DETAILS

DRAWN BY : J. YANNACCONE DATE : 1/16
 CHECKED BY : S. WANCE DATE : 1/16

DOCUMENT NOT CONSIDERED FINAL UNLESS ALL SIGNATURES COMPLETED

REVISIONS						SHEET NO.
NO.	BY:	DATE:	NO.	BY:	DATE:	S-77
1			3			TOTAL SHEETS
2			4			122