

NOTES

REPAIR LOCATIONS AND ESTIMATED QUANTITIES ARE GIVEN WITH THE BEST INFORMATION AVAILABLE. IF ADDITIONAL REPAIRS NOT SHOWN ON THE DRAWINGS ARE DEEMED NECESSARY BY THE ENGINEER, THE ENGINEER WILL NOTE ON THE DRAWINGS THE APPROXIMATE LOCATIONS AND DESCRIPTION OF THE REPAIRS AND ADJUST THE ACTUAL QUANTITIES ENTERED INTO THE AS-BUILT REPAIR QUANTITY TABLE.

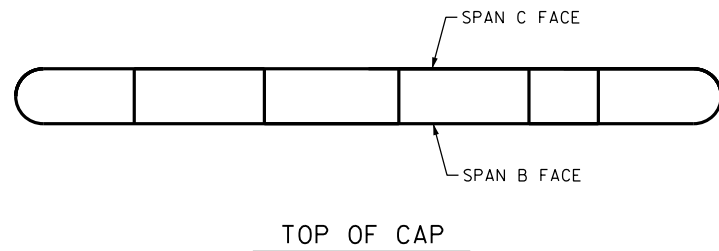
FOR CAP REPAIRS, SEE "TYPICAL CAP AND COLUMN REPAIR DETAILS" SHEET.

\* QUANTITY HAS BEEN INCREASED DUE TO THE POTENTIAL FOR FURTHER DETERIORATION SINCE THE FIELD INSPECTION BY STRUCTURES MANAGEMENT UNIT.

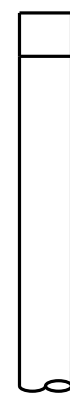
AS-BUILT REPAIR QUANTITY TABLE

REPAIRS BENT 2	QUANTITIES			
	ESTIMATE		ACTUAL	
SHOTCRETE REPAIRS	AREA SF	VOLUME CF	AREA SF	VOLUME CF
CAP	0.0	0.0		
COLUMN	18.2	13.8 *		
EPOXY RESIN INJECTION	LN. FT		LN. FT	
CAP	0.0			
COLUMN	0.0			
EPOXY COATING	SQ. FT		SQ. FT	
TOP OF BENT CAP	0			

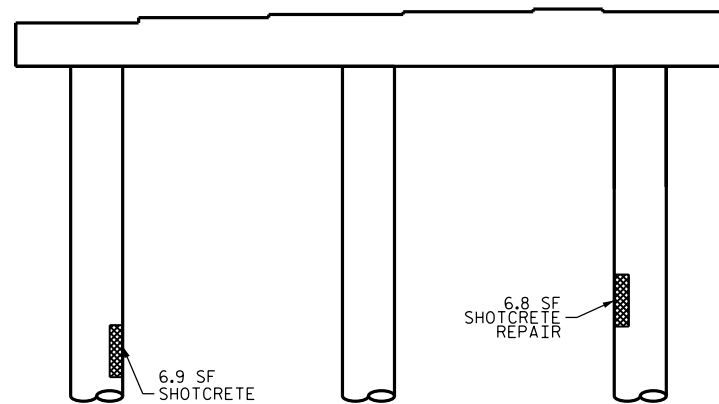
VALUES IN CHARTS REPRESENT ESTIMATED REPAIR TOTALS AFTER REMOVAL OF UNSOUND CONCRETE, MIN. OF 1" BEHIND REBAR AND MIN. 1" CLEAR TO SAWCUT.



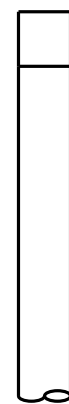
TOP OF CAP



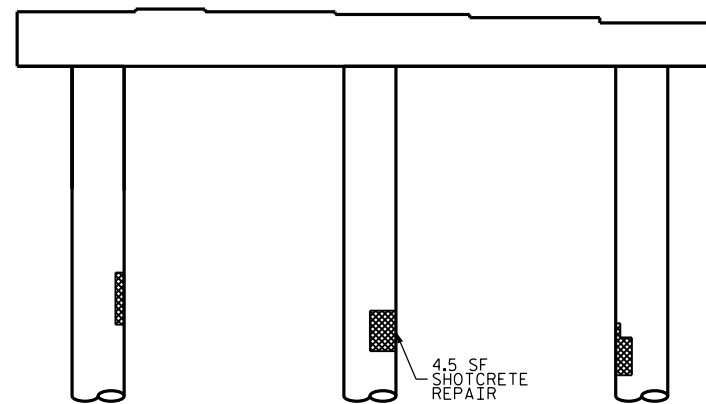
END VIEW  
NORTH FACE



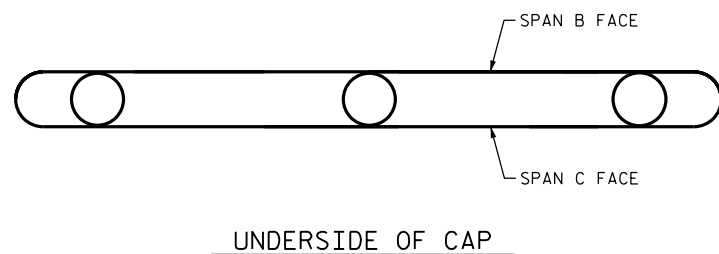
SPAN B FACE



END VIEW  
SOUTH FACE



SPAN C FACE



UNDERSIDE OF CAP

PROJECT NO. I-5756  
HAYWOOD COUNTY  
 BRIDGE NO. 222

SHEET 2 OF 2

DocuSigned by:  
*John A. Yannaccone*  
 7BC36E9C5...  
 STATE OF NORTH CAROLINA  
 PROFESSIONAL ENGINEER  
 SEAL  
 32492  
 JOHN A. YANNACCONI  
 3/21/2016

STATE OF NORTH CAROLINA  
 DEPARTMENT OF TRANSPORTATION  
 RALEIGH  
  
 BENT 2

DRAWN BY : W.O. KEITH DATE : 10/15  
 CHECKED BY : J. YANNACCONI DATE : 11/15

DOCUMENT NOT CONSIDERED  
 FINAL UNLESS ALL  
 SIGNATURES COMPLETED

REVISIONS						SHEET NO.
NO.	BY:	DATE:	NO.	BY:	DATE:	S-45
1			3			TOTAL SHEETS
2			4			122