

NOTES

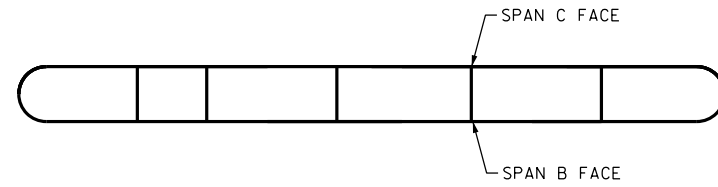
REPAIR LOCATIONS AND ESTIMATED QUANTITIES ARE GIVEN WITH THE BEST INFORMATION AVAILABLE. IF ADDITIONAL REPAIRS NOT SHOWN ON THE DRAWINGS ARE DEEMED NECESSARY BY THE ENGINEER, THE ENGINEER WILL NOTE ON THE DRAWINGS THE APPROXIMATE LOCATIONS AND DESCRIPTION OF THE REPAIRS AND ADJUST THE ACTUAL QUANTITIES ENTERED INTO THE AS-BUILT REPAIR QUANTITY TABLE.

FOR CAP REPAIRS, SEE "TYPICAL CAP AND COLUMN REPAIR DETAILS" SHEET.

AS-BUILT REPAIR QUANTITY TABLE

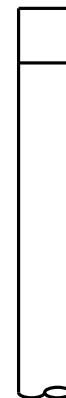
REPAIRS BENT 2	QUANTITIES			
	ESTIMATE		ACTUAL	
SHOTCRETE REPAIRS	AREA SF	VOLUME CF	AREA SF	VOLUME CF
CAP	0.0	0.0		
COLUMN	0.0	0.0		
EPOXY RESIN INJECTION	LN. FT		LN. FT	
CAP	0.0			
COLUMN	0.0			
EPOXY COATING	SQ. FT		SQ. FT	
TOP OF BENT CAP	0			

VALUES IN CHARTS REPRESENT ESTIMATED REPAIR TOTALS AFTER REMOVAL OF UNSOUND CONCRETE, MIN. OF 1" BEHIND REBAR AND MIN. 1" CLEAR TO SAWCUT.

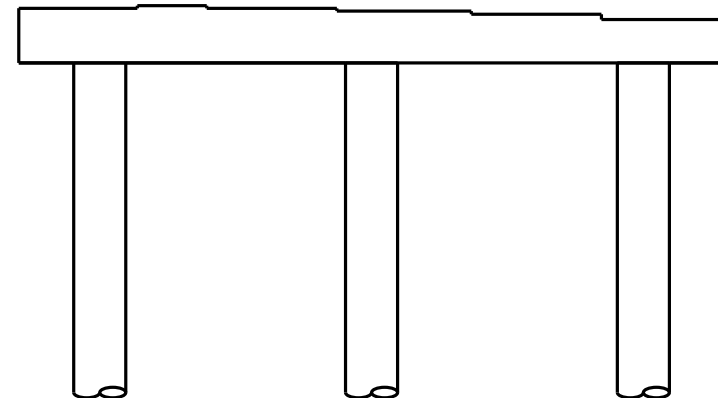


TOP OF CAP

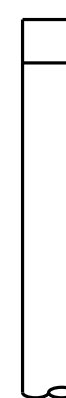
NO REPAIRS NOTED FOR BENT 2 DURING INSPECTION BY STRUCTURES MANAGEMENT UNIT. THE CONTRACTOR AND ENGINEER SHALL INSPECT THE BENT PRIOR TO BEGINNING WORK.



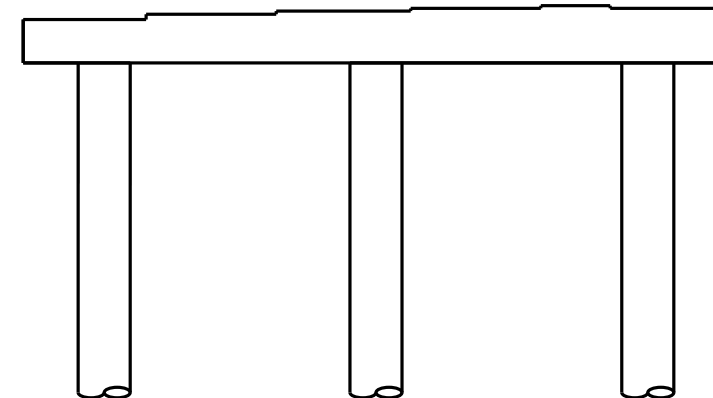
END VIEW
NORTH FACE



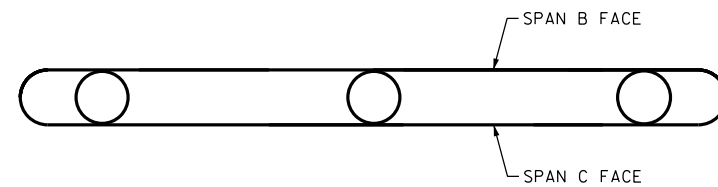
SPAN B FACE



END VIEW
SOUTH FACE



SPAN C FACE



UNDERSIDE OF CAP

PROJECT NO. I-5756
HAYWOOD COUNTY
 BRIDGE NO. 209

SHEET 2 OF 2

DocuSigned by:
John A. Yannaccone
 7BC36E9C8E01E0

 3/21/2016

STATE OF NORTH CAROLINA
 DEPARTMENT OF TRANSPORTATION
 RALEIGH

BENT 2

DRAWN BY : W. O. KEITH DATE : 11/15
 CHECKED BY : J. YANNACCONE DATE : 12/15

21-MAR-2016 13:14
 R:\Structures\Final Drawings\430209\430209.SD.B*.dgn
 Jayannaccone

DOCUMENT NOT CONSIDERED
 FINAL UNLESS ALL
 SIGNATURES COMPLETED

REVISIONS						SHEET NO.
NO.	BY:	DATE:	NO.	BY:	DATE:	S-35
1			3			TOTAL SHEETS
2			4			122