

NOTES

FOR BRIDGE JOINT DEMOLITION, SEE SPECIAL PROVISIONS.
 FOR ELASTOMERIC CONCRETE, SEE SPECIAL PROVISIONS.
 FOR FOAM JOINT SEALS, SEE SPECIAL PROVISIONS.
 THE INSTALLED FOAM JOINT SEALS SHALL BE WATERTIGHT.
 NOMINAL UNCOMPRESSED SEAL WIDTH OF FOAM JOINT SEAL SHALL BE 2".
 THE CONTRACTOR WILL NOT BE PERMITTED TO FORM THE JOINT FOR THE FOAM JOINT SEAL IN LIEU OF SAWING THE JOINT.
 FOR ADHESIVELY ANCHORED DOWELS, NO FIELD TESTING IS REQUIRED. FOR ADHESIVELY ANCHORED ANCHOR BOLTS OR DOWELS, SEE ARTICLE 420-13 OF THE STANDARD SPECIFICATIONS.

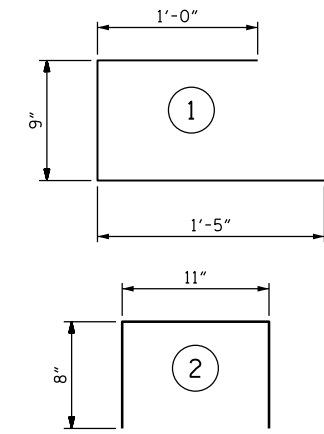
BILL OF MATERIAL

FOR ONE END BENT JOINT					
BAR	NO.	SIZE	TYPE	LENGTH	WEIGHT
D1	4	#4	STR	1'-6"	4
K1	2	#4	STR	24'-2"	32
K2	2	#4	STR	17'-6"	24
K3	3	#4	STR	5'-8"	11
K4	3	#4	STR	9'-8"	19
S1	16	#4	1	3'-2"	34
S2	24	#4	2	2'-3"	36

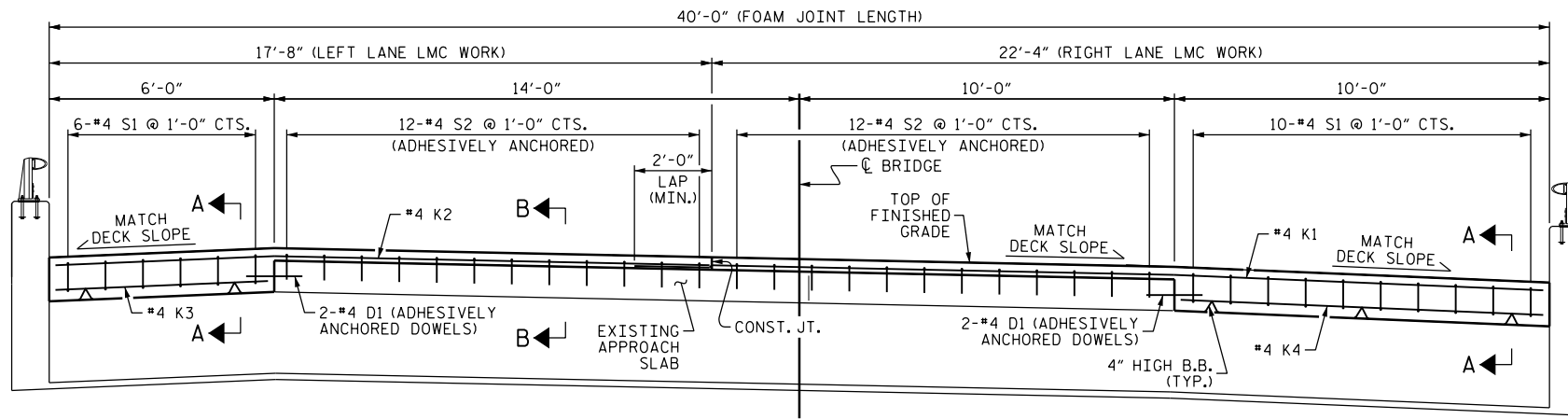
REINFORCING STEEL (FOR ONE END BENT JOINT) 160 LBS.

CLASS AA CONCRETE (FOR ONE END BENT JOINT) 1.9 CU. YDS.

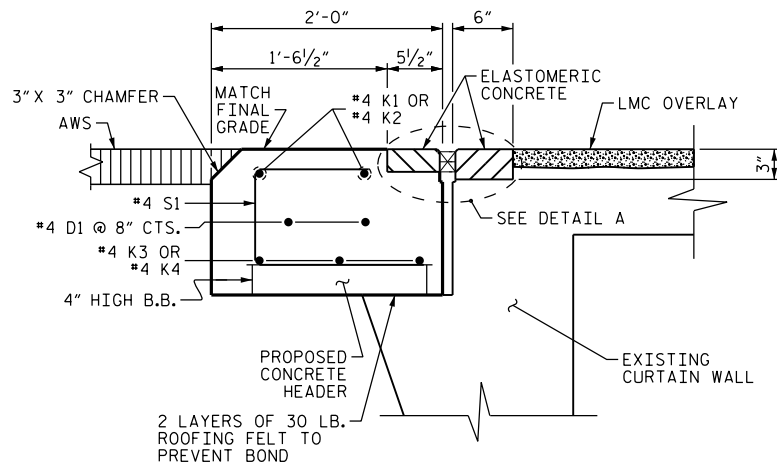
BAR TYPES



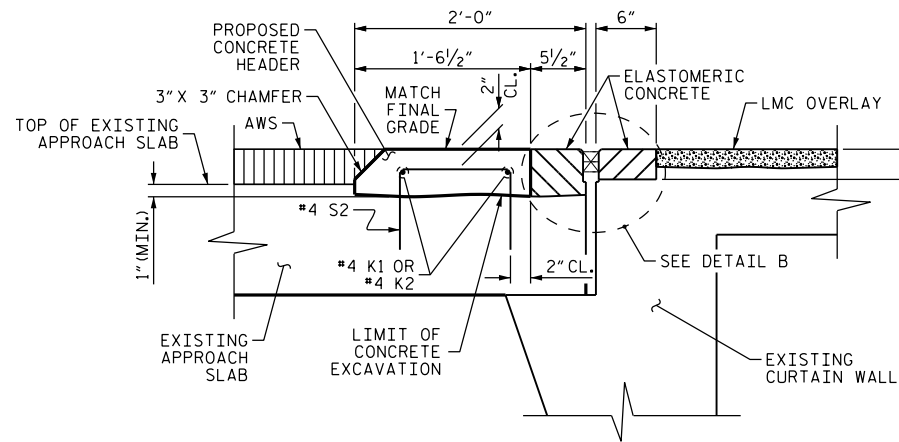
ALL BAR DIMENSIONS ARE OUT TO OUT.



TYPICAL SECTION
 (FILL FACE @ END BENT 1 SHOWN. END BENT 2 SIMILAR.)



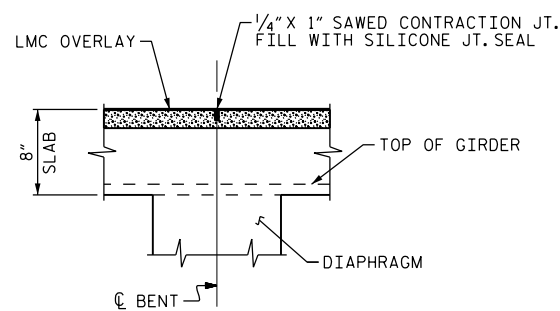
SECTION A-A



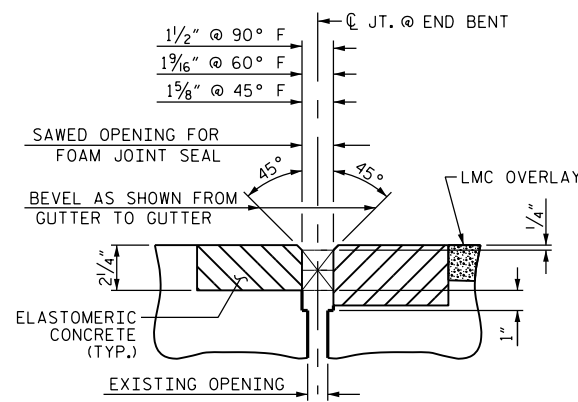
SECTION B-B

ELASTOMERIC CONCRETE		
END BENT 1	10.5	(CU. FT.)
END BENT 2	10.5	(CU. FT.)
* TOTAL	21.0	(CU. FT.)

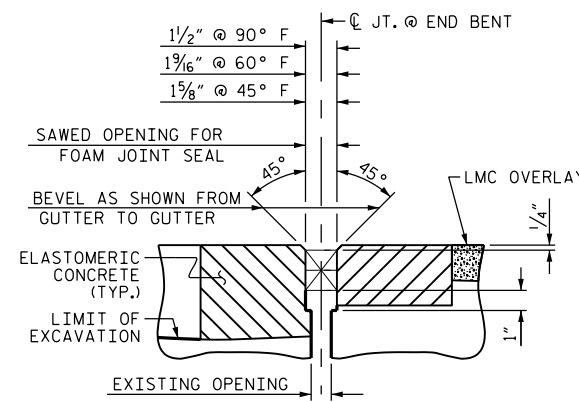
* BASED ON THE MINIMUM BLOCKOUT SHOWN.



SECTION C-C



DETAIL A
 FOAM JOINT SEAL



DETAIL B
 FOAM JOINT SEAL

PROJECT NO. I-5756
HAYWOOD COUNTY
 BRIDGE NO. 209

DocuSigned by:
John A. Yannaccone
 7BC36E9C
 NORTH CAROLINA
 PROFESSIONAL
 SEAL
 32492
 JOHN A. YANNACCONI
 ENGINEER

3/21/2016

STATE OF NORTH CAROLINA
 DEPARTMENT OF TRANSPORTATION
 RALEIGH

JOINT DETAILS

DRAWN BY : J. YANNACCONI DATE : 3/16
 CHECKED BY : S. WANCE DATE : 3/16

DOCUMENT NOT CONSIDERED
 FINAL UNLESS ALL
 SIGNATURES COMPLETED

REVISIONS						SHEET NO.
NO.	BY:	DATE:	NO.	BY:	DATE:	
1			3			S-32
2			4			TOTAL SHEETS 122