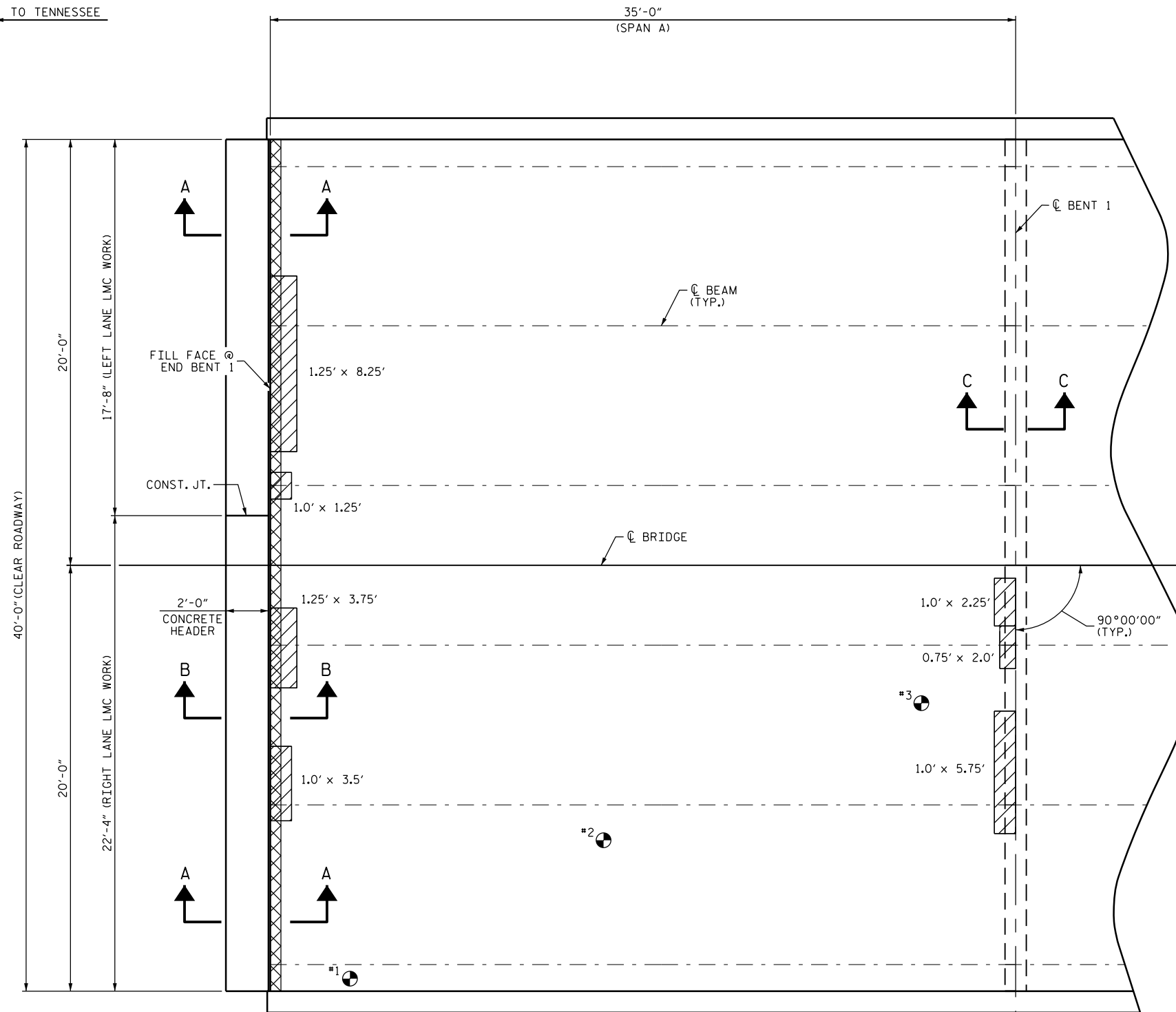


← TO TENNESSEE

→ TO CLYDE



PLAN

AS-BUILT REPAIR QUANTITY TABLE

TOP OF DECK REPAIRS				
	ESTIMATE	ACTUAL		
SCARIFYING BRIDGE DECK	153 SY			
HYDRO-DEMOLITION OF BRIDGE DECK	153 SY			
CLASS II SURFACE PREPARATION	3.3 SY			
CLASS III SURFACE PREPARATION	0.0 SY			
BRIDGE JOINT DEMOLITION	20.0 SF			
EPOXY RESIN INJECTION	0.0 LF			
CLASS AA CONCRETE FOR CLASS III SURFACE PREPARATION	0.0 CY			
UNDERSIDE OF DECK REPAIRS				
SHOTCRETE REPAIRS	ESTIMATE		ACTUAL	
	AREA SF	VOLUME CF	AREA SF	VOLUME CF
UNDERSIDE OF DECK	0.0	0.0		
OVERHANG DIAPHRAGMS	0.0	0.0		
UNDERSIDE OF OVERHANG	0.0	0.0		
INTERIOR DIAPHRAGMS	0.0	0.0		
UNDERSIDE EPOXY RESIN INJECTION				
	ESTIMATE	ACTUAL		
UNDERSIDE EPOXY RESIN INJECTION	0.0 LF			

VALUES IN CHARTS REPRESENT ESTIMATED UNDERSIDE OF DECK REPAIR TOTALS AFTER REMOVAL OF UNSOUND CONCRETE, MIN. OF 1" BEHIND REBAR AND MIN. 1" CLEAR TO SAWCUT. SEE REPAIR DETAILS..

- APPROX. CLASS II AREA
- APPROX. CLASS III AREA
- BRIDGE JOINT DEMOLITION
- UNDERSIDE REPAIR
- DIAPHRAGM REPAIR
- #1 TEST LOCATION
- ERI EPOXY RESIN INJECTION

NOTES

REPAIR LOCATIONS AND ESTIMATED QUANTITIES ARE GIVEN WITH THE BEST INFORMATION AVAILABLE. IF ADDITIONAL REPAIRS NOT SHOWN ON THE DRAWINGS ARE DEEMED NECESSARY BY THE ENGINEER, THE ENGINEER WILL NOTE ON THE DRAWINGS THE APPROXIMATE LOCATIONS AND DESCRIPTION OF THE REPAIRS AND ADJUST THE ACTUAL QUANTITIES ENTERED INTO THE AS-BUILT REPAIR QUANTITY TABLE.

CONCRETE COVER FOR TOP BARS IN THE DECK SLAB IS 1/2" PER THE EXISTING BRIDGE PLANS.

PRIOR TO PLACEMENT OF THE LMC OVERLAY ACROSS THE CONTINUOUS DECK SPANS, THE CONTRACTOR SHALL SUBMIT A POUR SEQUENCE FOR APPROVAL BY THE ENGINEER.

FOR SECTIONS A-A, B-B AND C-C, SEE "JOINT DETAILS" SHEET.

FOR UNDERSIDE OF DECK AND DIAPHRAGM REPAIRS, SEE "OVERHANG & DIAPHRAGM REPAIRS DETAILS" SHEET.

PROJECT NO. I-5756
HAYWOOD COUNTY
 BRIDGE NO. 209

SHEET 1 OF 3

DocuSigned by:
John A. Yannaccone
 7BC36E9CE

STATE OF NORTH CAROLINA
 DEPARTMENT OF TRANSPORTATION
 RALEIGH

**PLAN OF SPAN
 SPAN A**

TEST LOCATION	CONCRETE STRENGTH (PSI)
#1	6160
#2	6410
#3	6230

INFORMATION IN CHART TAKEN FROM DECK EVALUATION DATED 10/12/2015.

DRAWN BY : W. O. KEITH DATE : 9/15
 CHECKED BY : J. YANNACCONE DATE : 12/15

REVISIONS						SHEET NO.
NO.	BY:	DATE:	NO.	BY:	DATE:	TOTAL SHEETS
1			3			S-29
2			4			122

DOCUMENT NOT CONSIDERED FINAL UNLESS ALL SIGNATURES COMPLETED