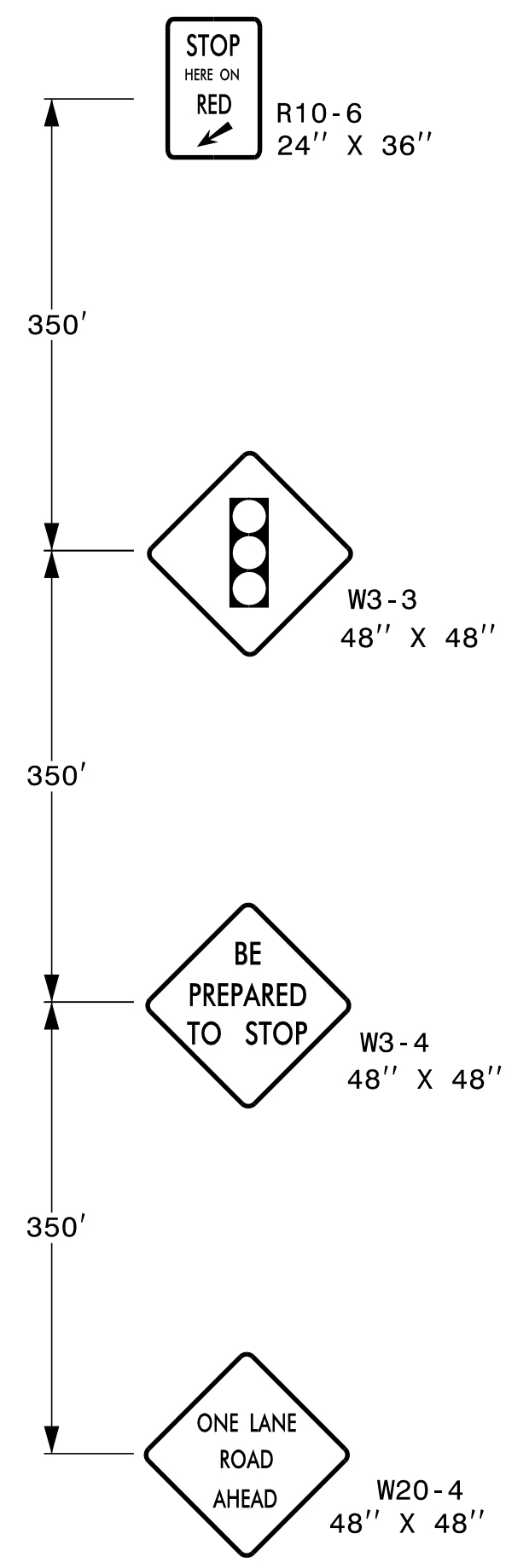
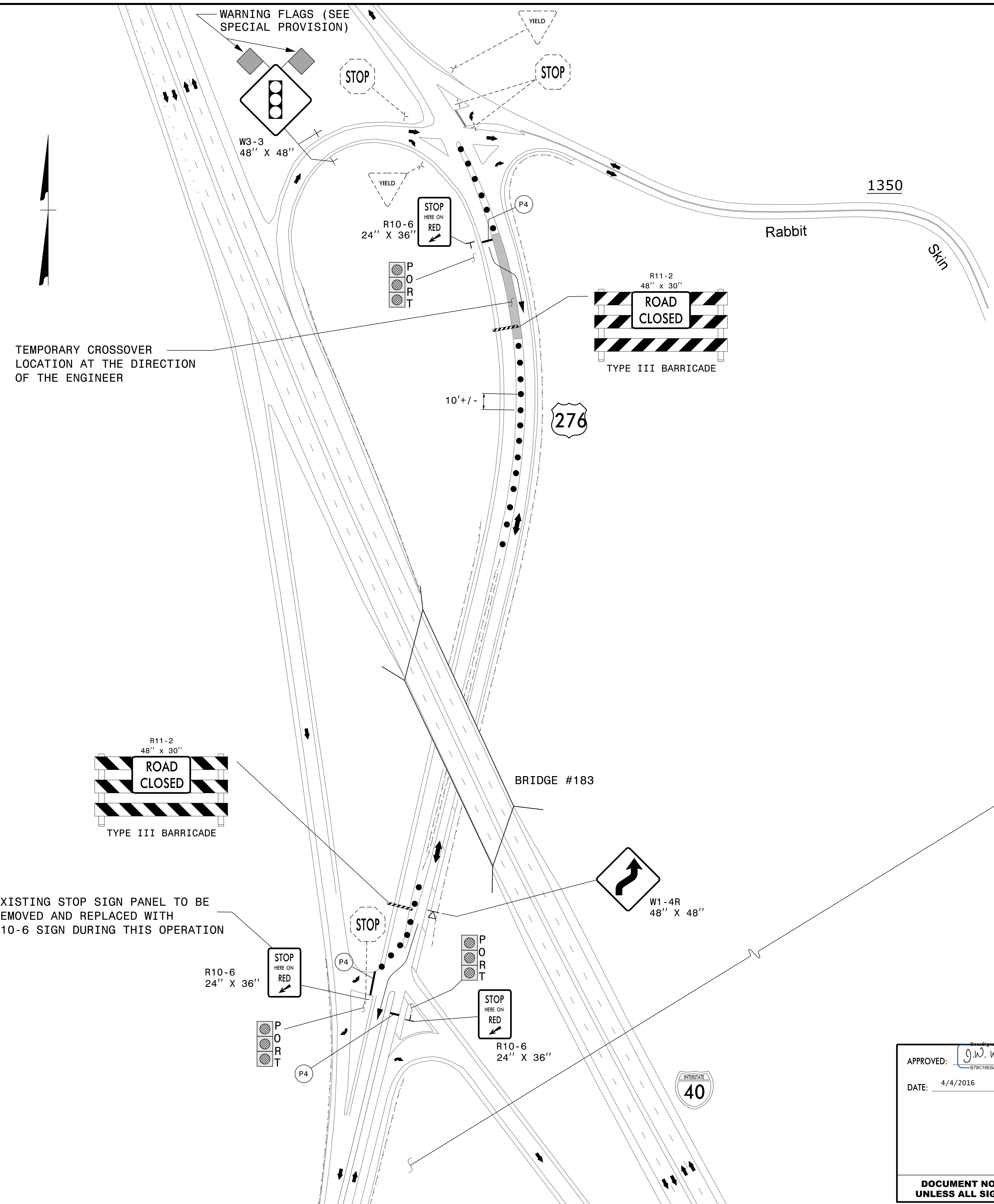
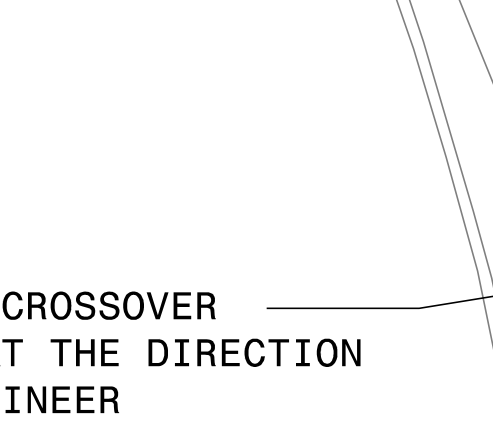
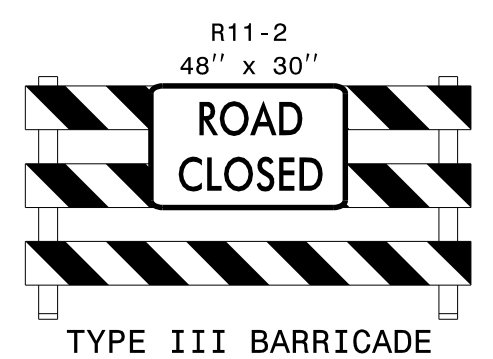


TEMPORARY PAVEMENT MARKING/MARKER LEGEND	
(P4)	PAINT - WHITE STOP BAR (24")



US 276 NORTHBOUND TRAFFIC  
ADVANCE WARNING SIGNS

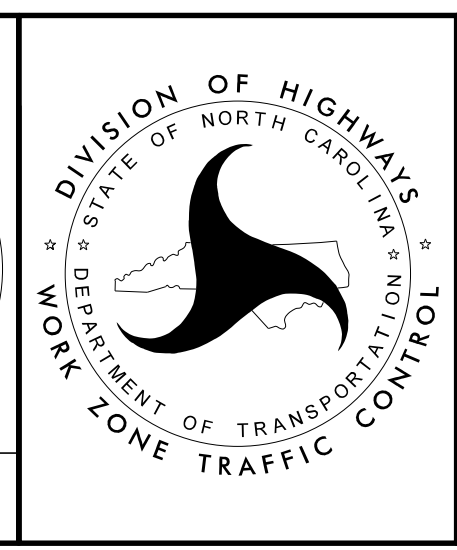
EXISTING STOP SIGN PANEL TO BE  
REMOVED AND REPLACED WITH  
R10-6 SIGN DURING THIS OPERATION



APPROVED: *J.W. Woolard Jr.*  
DATE: 4/4/2016

PROFESSIONAL SEAL  
019862  
ENGINEER  
J.W. WOOLARD JR.

**DOCUMENT NOT CONSIDERED FINAL  
UNLESS ALL SIGNATURES COMPLETED**



**CLOSING EXISTING  
US-276 SB LANE  
AT BRIDGE # 183**