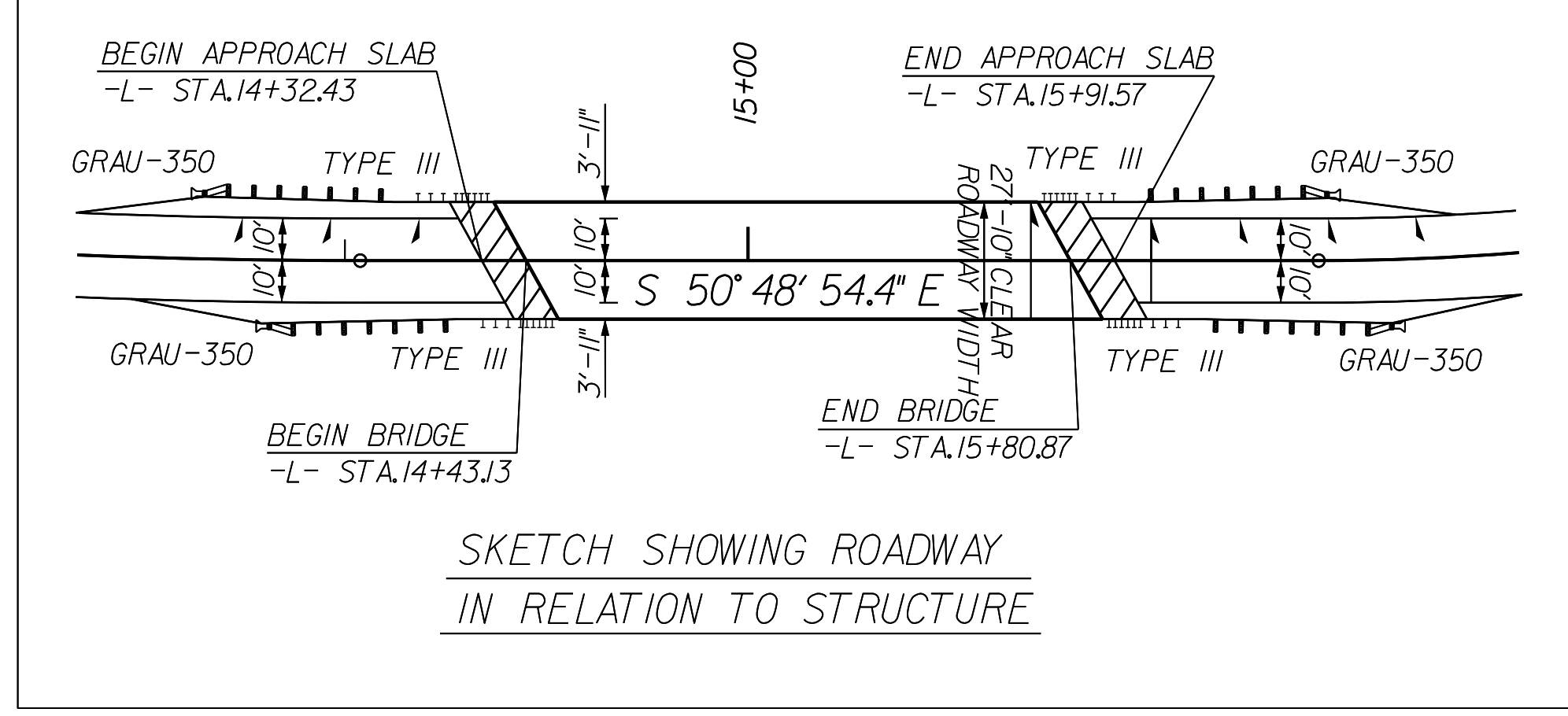
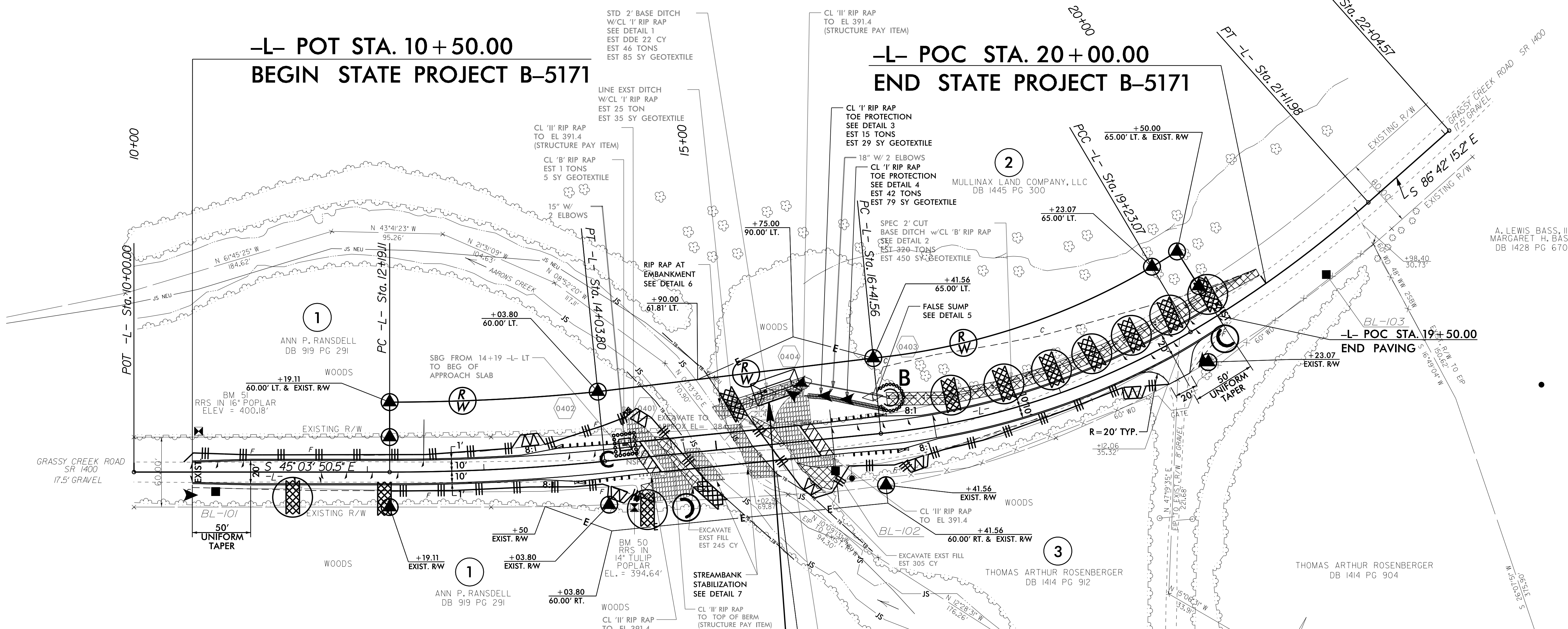
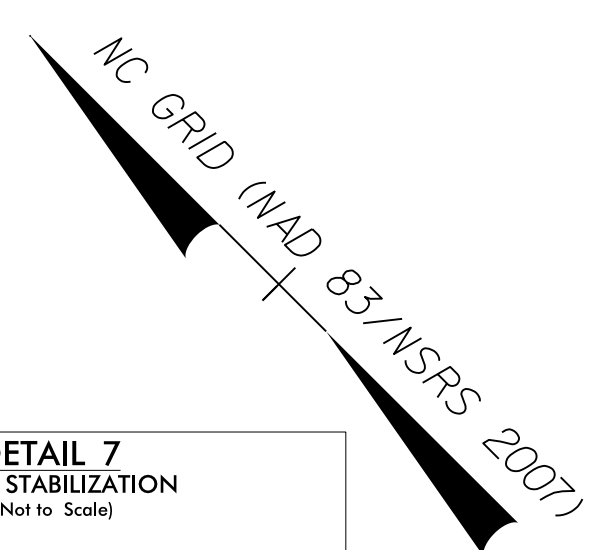
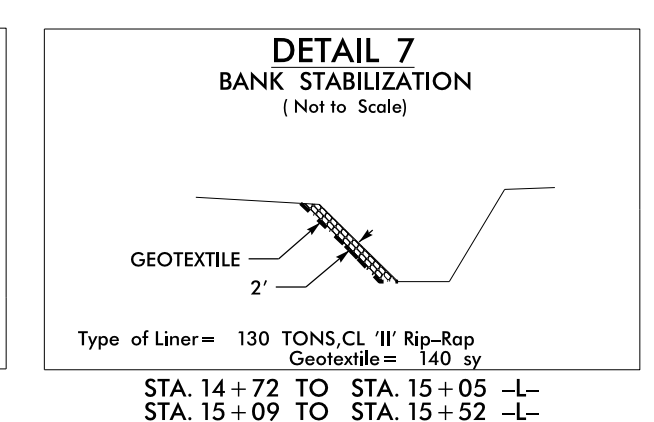
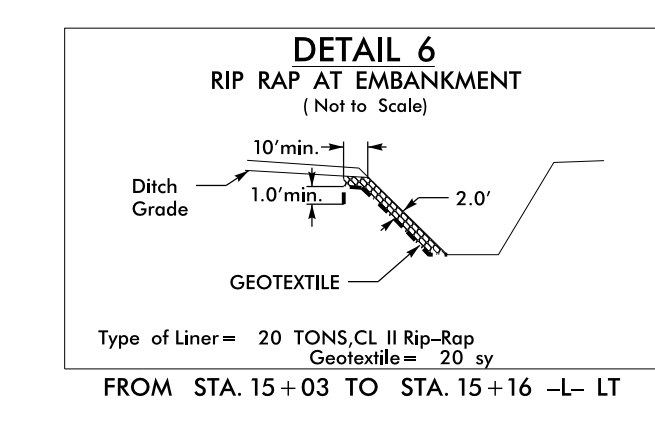
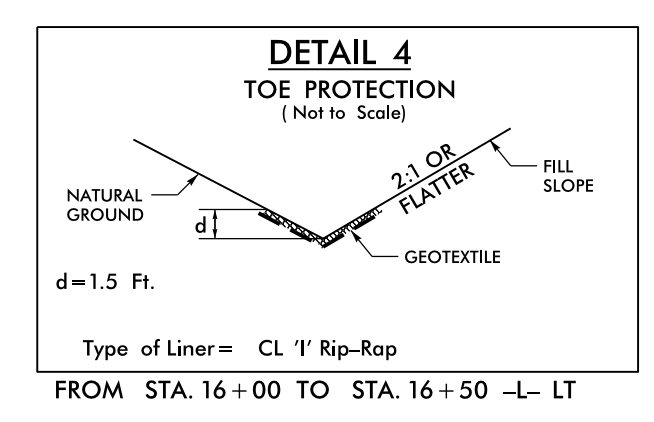
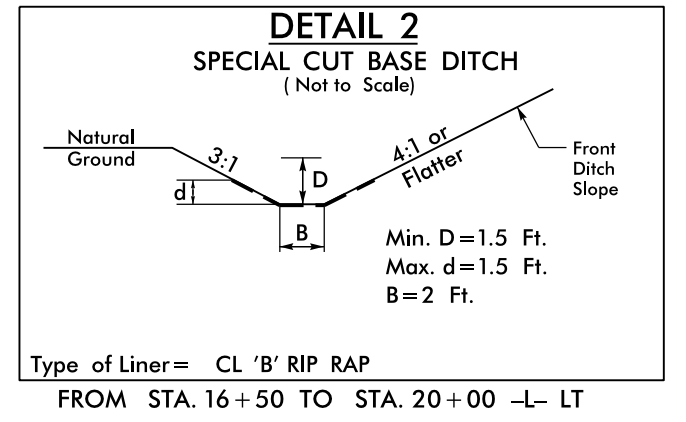
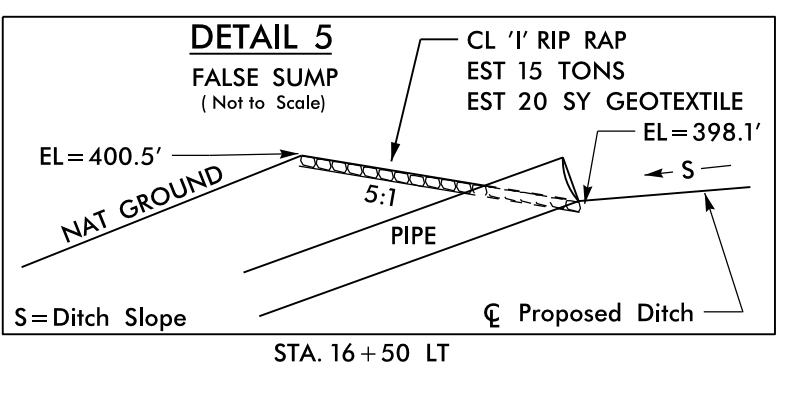
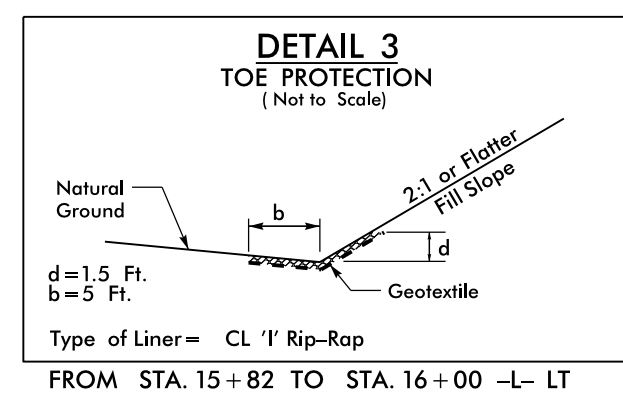
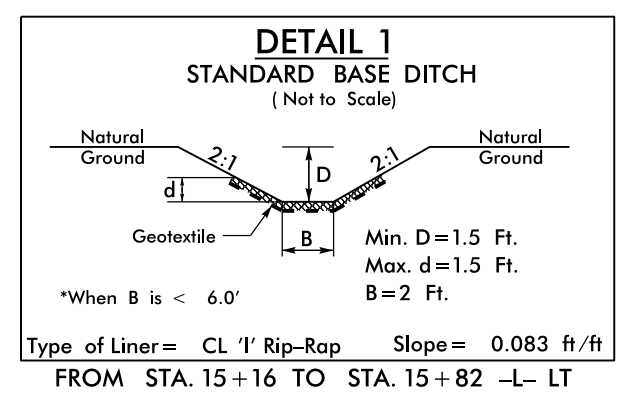


PROJECT REFERENCE NO.	SHEET NO.
B-5171	EC-5/CONST.4
RW SHEET NO.	
ROADWAY DESIGN ENGINEER	HYDRAULICS ENGINEER

-L- CURVE DATA	-L- CURVE DATA	-L- CURVE DATA
PI Sta 13+11.53 Δ = 5° 45' 03.9" (LT) D = 3° 06' 50.0" L = 184.69' T = 92.42' R = 1,840.00' DS = 65 MPH SE = .04	PI Sta 17+84.56 Δ = 2° 48' 52.0" (LT) D = 8° 48' 53.0" L = 281.51' T = 143.00' R = 650.00' DS = 45 MPH SE = .04	PI Sta 20+17.82 Δ = 1° 04' 28.7" (LT) D = 5° 51' 45.0" L = 188.91' T = 94.75' R = 977.33' DS = 50 MPH



40 x 20 x 3
1.5 inch Skimmer
with 0.75 inch
Orifice Diameter
4 ft weir
ID 4.1

NOTE:
UTILIZE TEMPORARY SEDIMENT BASIN OR SPECIAL STILLING
BASIN(S) AS STILLING BASIN WHERE APPLICABLE.

5/14/09
21-JAN-2016 16:18
RAE:\work\poc\design\B5171-EC.pst\4.dgn