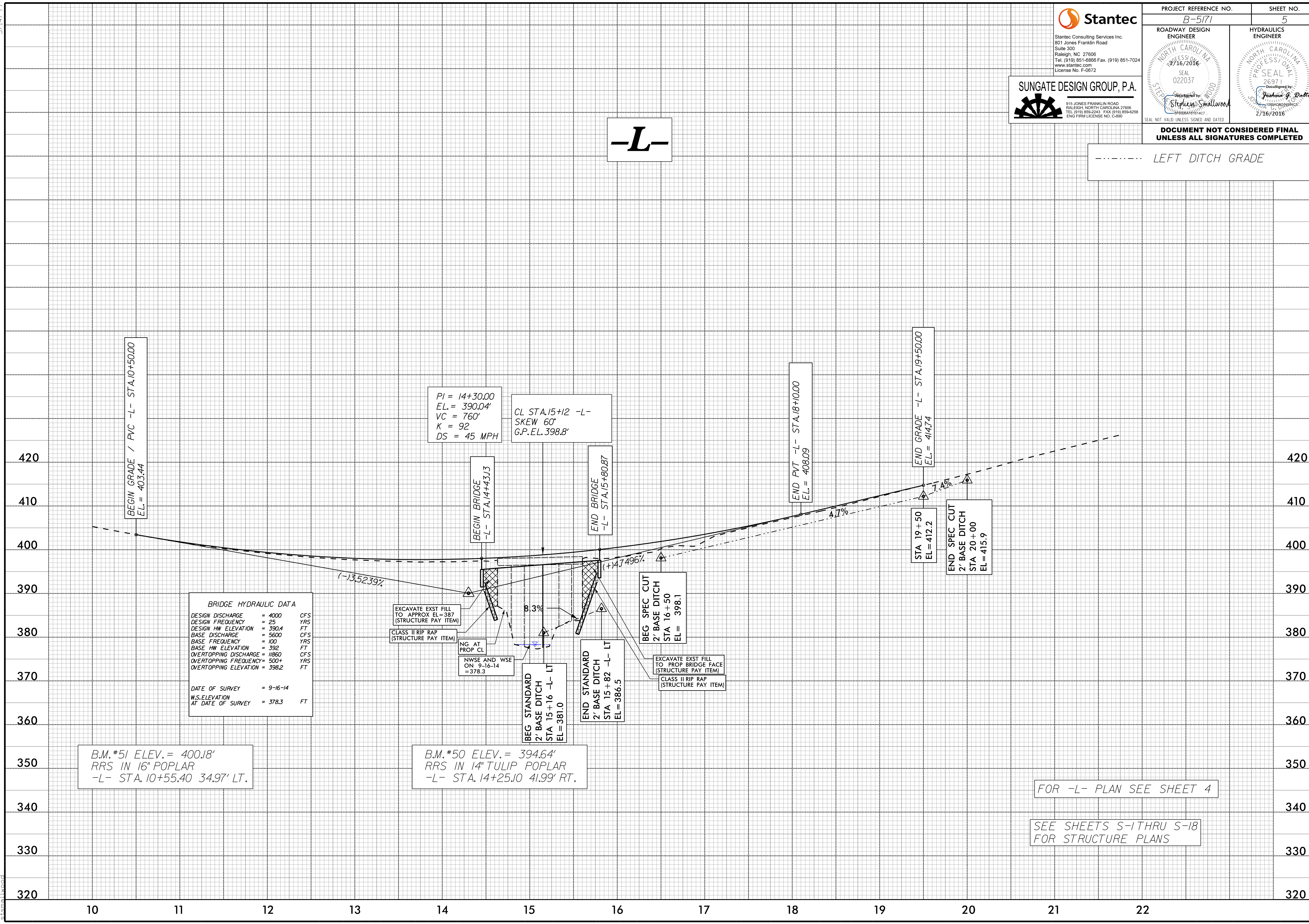


DOCUMENT NOT CONSIDERED FINAL
UNLESS ALL SIGNATURES COMPLETED

----- LEFT DITCH GRADE

-L-



BRIDGE HYDRAULIC DATA

DESIGN DISCHARGE	= 4000	CFS
DESIGN FREQUENCY	= 25	YRS
DESIGN HW ELEVATION	= 390.4	FT
BASE DISCHARGE	= 5600	CFS
BASE FREQUENCY	= 100	YRS
BASE HW ELEVATION	= 392	FT
OVERTOPPING DISCHARGE	= 11860	CFS
OVERTOPPING FREQUENCY	= 500+	YRS
OVERTOPPING ELEVATION	= 398.2	FT

DATE OF SURVEY = 9-16-14
W.S. ELEVATION AT DATE OF SURVEY = 378.3 FT

- EXCAVATE EXST FILL TO APPROX EL=387 (STRUCTURE PAY ITEM)
- CLASS II RIP RAP (STRUCTURE PAY ITEM)
- NG AT PROP CL
- NWSE AND WSE ON 9-16-14 = 378.3
- EXCAVATE EXST FILL TO PROP BRIDGE FACE (STRUCTURE PAY ITEM)
- CLASS II RIP RAP (STRUCTURE PAY ITEM)

B.M. #51 ELEV. = 400.18'
RRS IN 16" POPLAR
-L- STA. 10+55.40 34.97' LT.

B.M. #50 ELEV. = 394.64'
RRS IN 14" TULIP POPLAR
-L- STA. 14+25.10 41.99' RT.

FOR -L- PLAN SEE SHEET 4

SEE SHEETS S-1 THRU S-18
FOR STRUCTURE PLANS