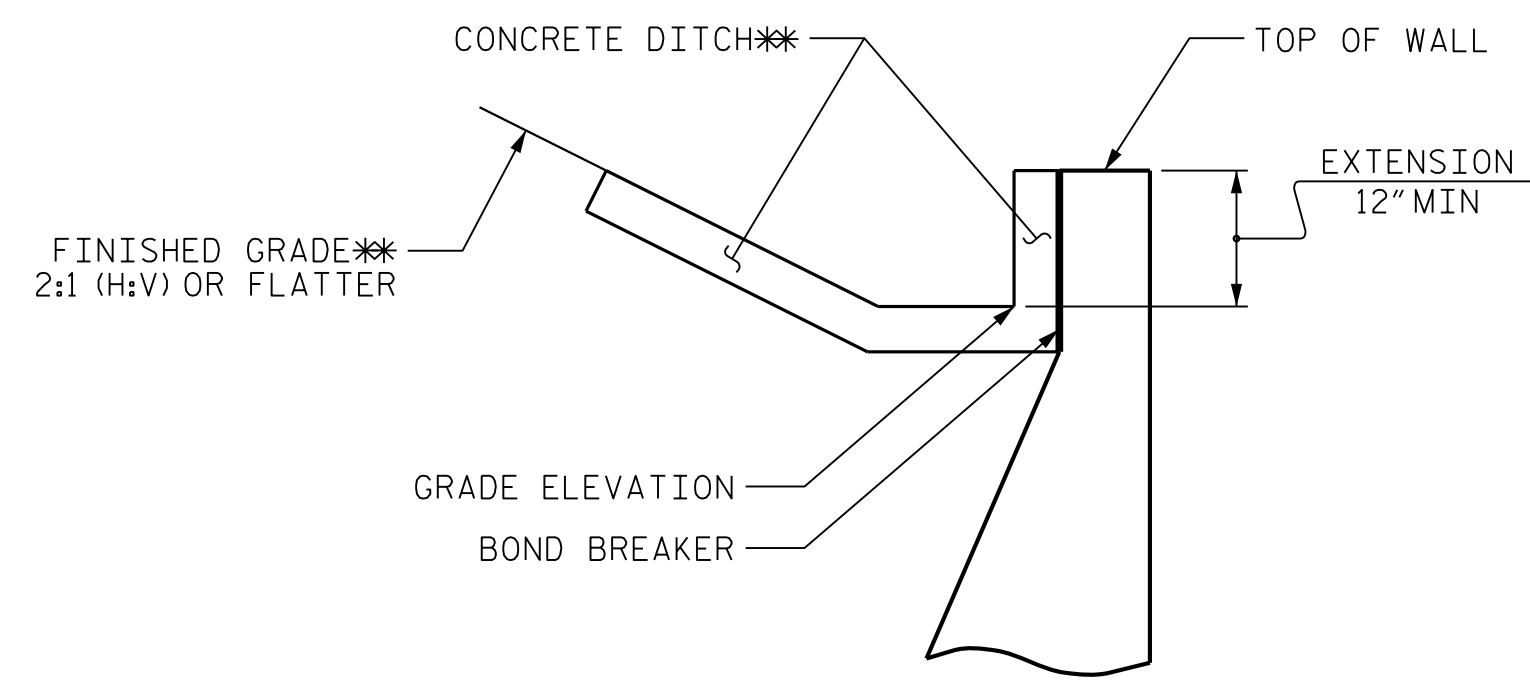


**This electronic collection of documents is provided
for the convenience of the user
and is Not a Certified Document –**

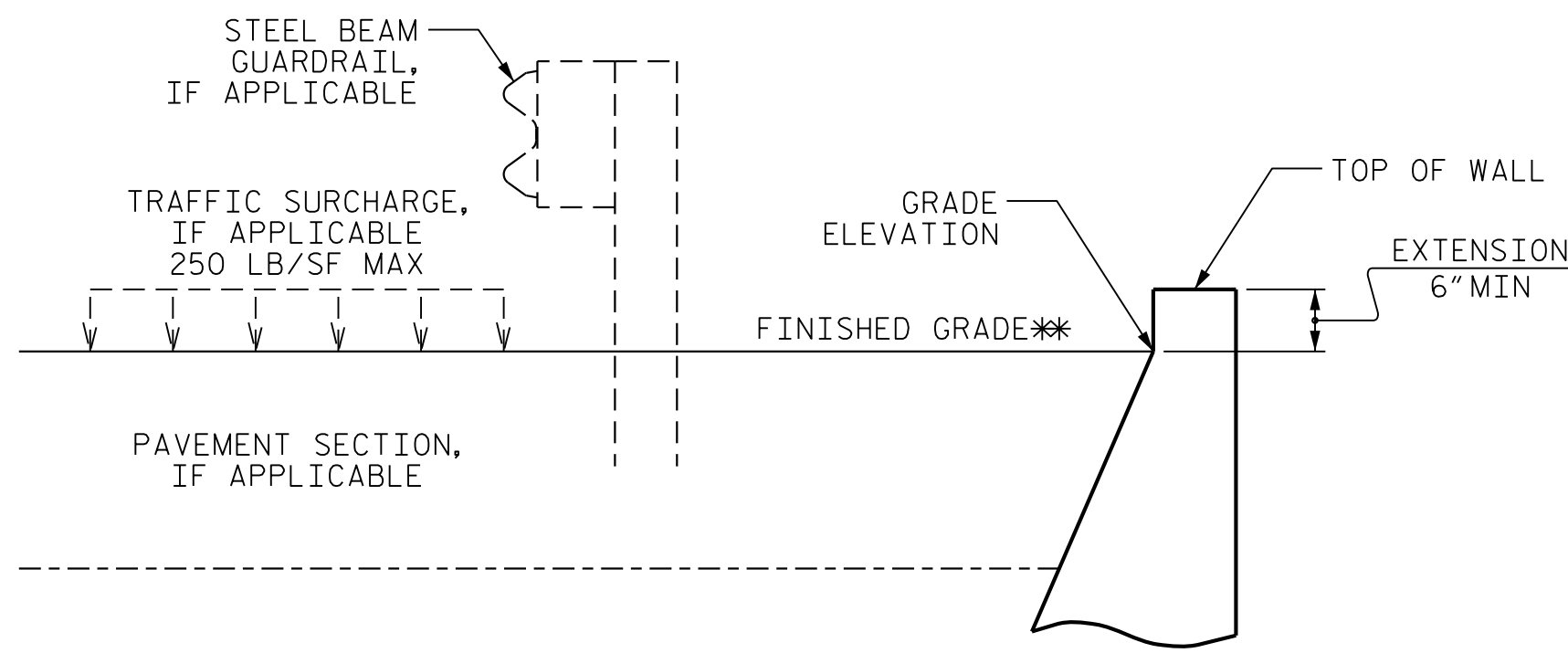
**The documents contained herein were originally issued
and sealed by the individuals whose names and license
numbers appear on each page, on the dates appearing
with their signature on that page.**

**This file or an individual page
shall not be considered a certified document.**



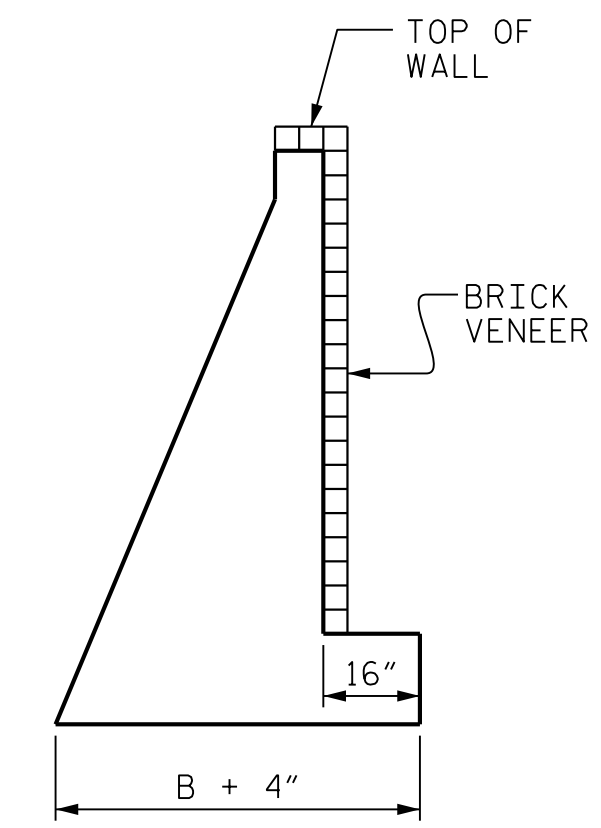
SLOPE CASE

**SEE ROADWAY PLANS FOR CONCRETE DITCH AND FINISHED GRADE DETAILS.



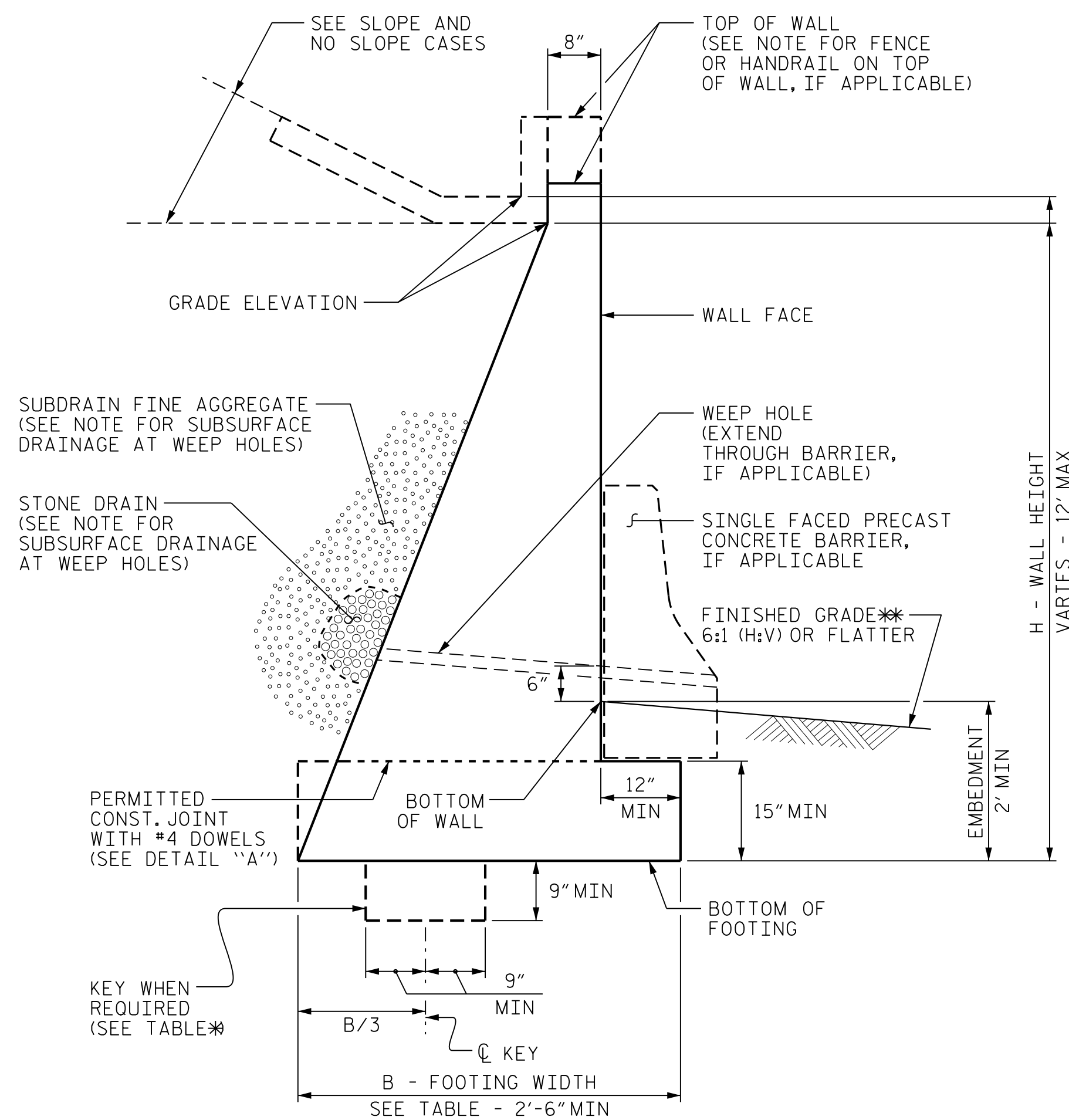
NO SLOPE CASE

**SEE ROADWAY PLANS FOR FINISHED GRADE DETAILS.



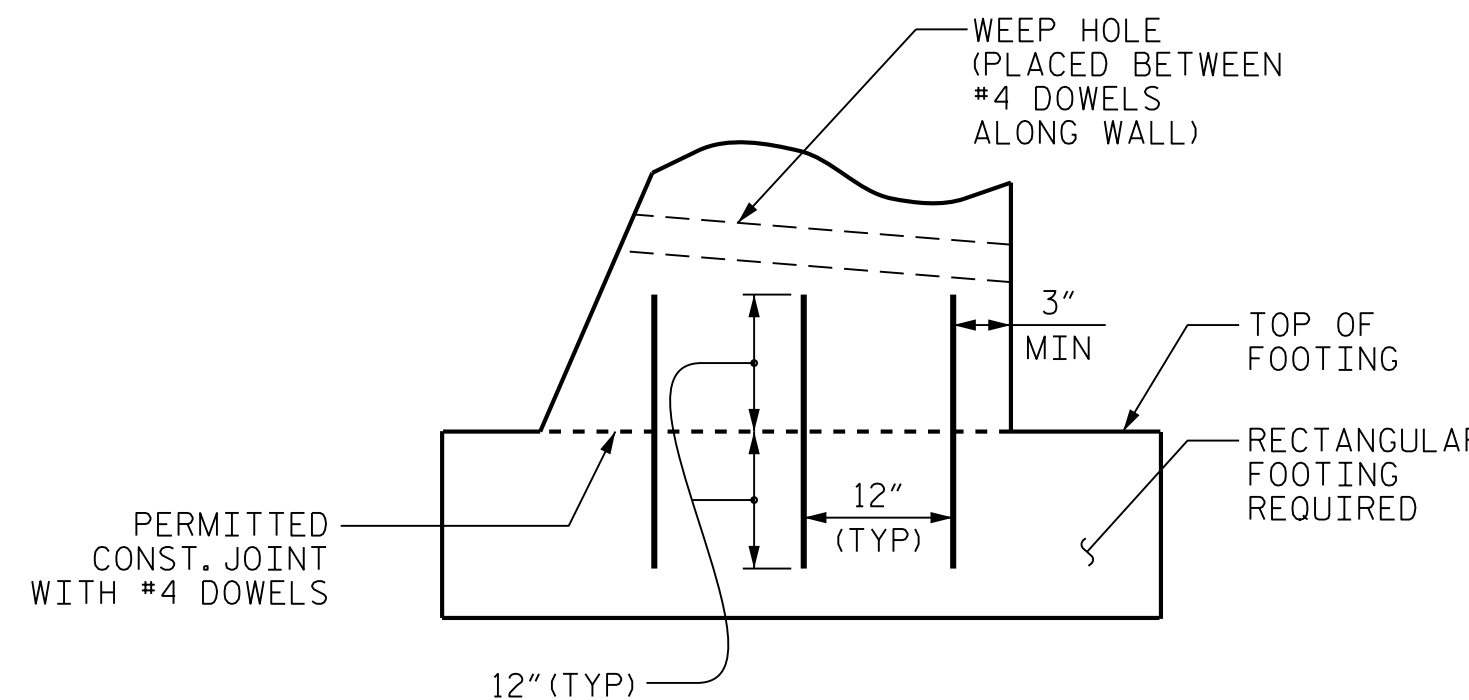
BRICK VENEER DETAIL

(WHEN APPLICABLE)



STANDARD CIP GRAVITY WALL

**SEE ROADWAY PLANS FOR FINISHED GRADE DETAILS.



DETAIL "A"

H (FT)	3 - < 6	6 - 9	> 9 - 12
SLOPE CASE	.66	.70*	.75*
NO SLOPE CASE WITH TRAFFIC SURCHARGE	.80	.75*	.70*
NO SLOPE CASE WITHOUT TRAFFIC SURCHARGE	.60	.60	.60

B/H RATIO (B = 2'-6" MIN)

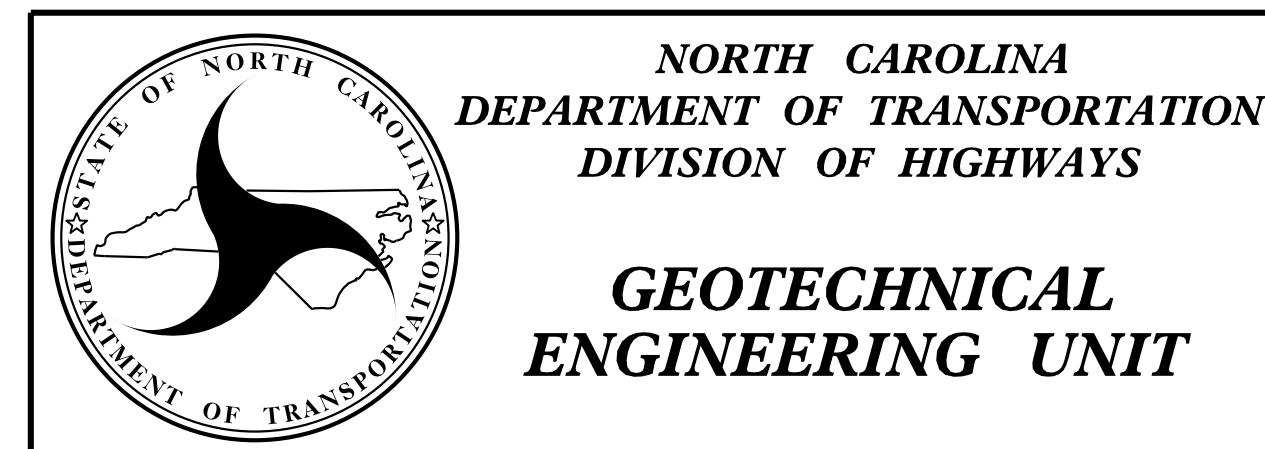
*KEY IS REQUIRED FOR "SLOPE CASE" OR "NO SLOPE CASE WITH TRAFFIC SURCHARGE" WHEN H IS 6' OR GREATER.

NOTES:

- FOR STANDARD CAST-IN-PLACE (CIP) GRAVITY RETAINING WALLS, SEE CAST-IN-PLACE GRAVITY RETAINING WALLS PROVISION.
- FOR STEEL BEAM GUARDRAIL, SEE ROADWAY PLANS AND SECTION 862 OF THE STANDARD SPECIFICATIONS.
- FOR SINGLE FACED PRECAST CONCRETE BARRIER, SEE ROADWAY PLANS AND SECTION 857 OF THE STANDARD SPECIFICATIONS.
- FOR FENCES OR HANDRAILS ON TOP OF WALLS, SEE ROADWAY PLANS FOR FENCE OR HANDRAIL ATTACHMENT DETAILS.
- FOR SUBSURFACE DRAINAGE AT WEEP HOLES, SEE ARTICLE 414-8 OF THE STANDARD SPECIFICATIONS.
- STANDARD CIP GRAVITY WALLS ARE BASED ON THE FOLLOWING IN-SITU ASSUMED SOIL PARAMETERS:
 UNIT WEIGHT, $\gamma = 120$ LB/CF
 FRICTION ANGLE, $\phi = 35$ DEGREES (GROUNDWATER WITHIN 7' OF BOTTOM OF FOOTING)
 FRICTION ANGLE, $\phi = 30$ DEGREES (GROUNDWATER MORE THAN 7' BELOW BOTTOM OF FOOTING)
 COHESION, $c = 0$ LB/SF

- DO NOT USE STANDARD CIP GRAVITY WALLS IF ASSUMED SOIL PARAMETERS ARE NOT APPLICABLE OR GROUNDWATER IS ABOVE BOTTOM OF FOOTING.
- DO NOT USE STANDARD CIP GRAVITY WALLS WHEN VERY LOOSE OR SOFT SOIL OR MUCK IS BELOW WALLS.
- BEFORE BEGINNING STANDARD CIP GRAVITY WALL CONSTRUCTION, SURVEY WALL LOCATIONS AND SUBMIT WALL PROFILE VIEWS (WALL ENVELOPES) FOR REVIEW. FOR WALL ENVELOPES, INCLUDE BOTTOM OF WALL, EXISTING GROUND AND GRADE ELEVATIONS AND OTHER ELEVATIONS AS NEEDED AT INTERVALS OF 25' OR LESS ALONG WALLS. DO NOT START WALL CONSTRUCTION UNTIL WALL ENVELOPES ARE ACCEPTED.
- FOR BRICK VENEERS, SUBMIT BRICK SAMPLES FOR APPROVAL BEFORE BEGINNING STANDARD CIP GRAVITY WALL CONSTRUCTION.
- DO NOT PLACE CONCRETE FOR FOOTINGS UNTIL EXCAVATION DIMENSIONS AND FOUNDATION MATERIAL ARE APPROVED.
- WHEN CONSTRUCTING STANDARD CIP GRAVITY WALLS WITH A CONSTRUCTION JOINT AS SHOWN IN DETAIL "A", PROVIDE A MINIMUM OF 3 EQUALLY SPACED #4 DOWELS AT INTERVALS OF 1'-6" ALONG WALLS.

PROJECT NO.: W-5510
 Forsyth COUNTY
 STATION: 13+30.00 to 15+55.00 -Y1-, 15+00.00 to 15+44.00 -Y2-
 SHEET 1 OF 1



STANDARD DETAIL NO. 453.01
 STANDARD CAST-IN-PLACE (CIP) GRAVITY RETAINING WALL
 DATE: 3-17-15

NOTES:

FOR STANDARD SEGMENTAL GRAVITY RETAINING WALLS, SEE SEGMENTAL GRAVITY RETAINING WALLS PROVISION.

FOR STEEL BEAM GUARDRAIL, SEE ROADWAY PLANS AND SECTION 862 OF THE STANDARD SPECIFICATIONS.

DO NOT ATTACH FENCES OR HANDRAILS TO STANDARD SEGMENTAL GRAVITY WALLS.

DO NOT USE STANDARD SEGMENTAL GRAVITY WALLS FOR INTERSTATE HIGHWAY OR RAILROAD PROJECTS.

DO NOT USE STANDARD SEGMENTAL GRAVITY WALLS WHEN SURCHARGE LOADS WILL BE WITHIN 5'-6" OF THE BACK OF SRW CAP UNITS.

DO NOT USE STANDARD SEGMENTAL GRAVITY WALLS WHEN VERY LOOSE OR SOFT SOIL OR MUCK IS BELOW WALLS.

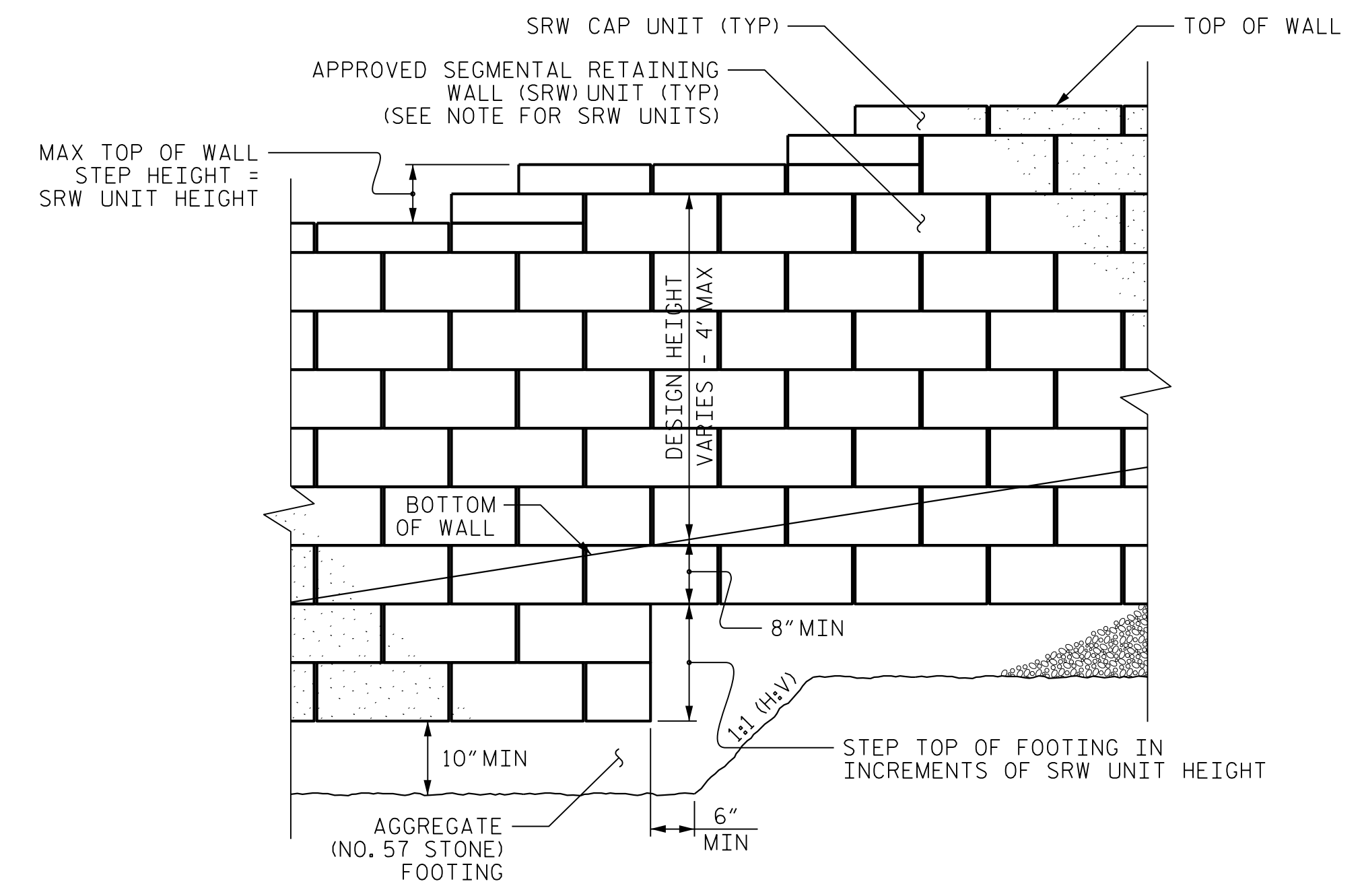
SEGMENTAL RETAINING WALL (SRW) UNITS ARE APPROVED FOR EITHER 2' OR 4' MAXIMUM DESIGN HEIGHTS. FOR DETAILS AND DIMENSIONS OF APPROVED SRW UNITS AND MAXIMUM DESIGN HEIGHTS, SEE connect.ncdot.gov/resources/Geological/Pages/Products.aspx

DO NOT MIX APPROVED SRW UNITS FROM DIFFERENT VENDORS ON THE SAME STANDARD SEGMENTAL GRAVITY WALL. USE THE SAME SIZE APPROVED SRW UNITS FOR EACH WALL SECTION.

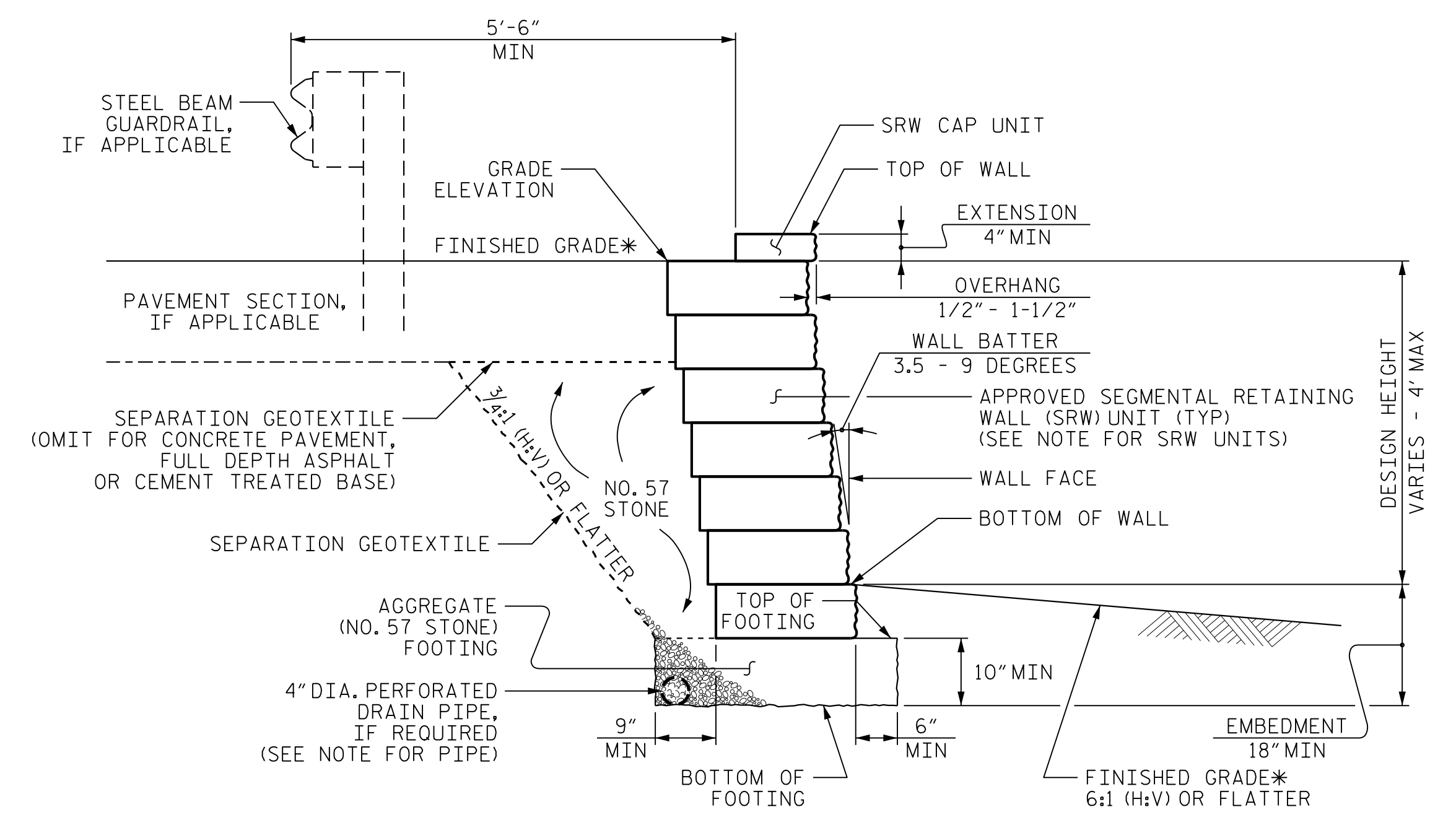
BEFORE BEGINNING STANDARD SEGMENTAL GRAVITY WALL CONSTRUCTION, SURVEY WALL LOCATIONS AND SUBMIT WALL PROFILE VIEWS (WALL ENVELOPES) FOR REVIEW. FOR WALL ENVELOPES, INCLUDE BOTTOM OF WALL, EXISTING GROUND AND GRADE ELEVATIONS AND OTHER ELEVATIONS AS NEEDED AT INTERVALS OF 25' OR LESS ALONG WALLS. DO NOT START WALL CONSTRUCTION UNTIL WALL ENVELOPES ARE ACCEPTED.

A DRAIN PIPE IS REQUIRED IF GROUNDWATER IS ABOVE BOTTOM OF FOOTINGS.

DO NOT PLACE NO. 57 STONE FOR FOOTINGS UNTIL EXCAVATION DIMENSIONS AND FOUNDATION MATERIAL ARE APPROVED.

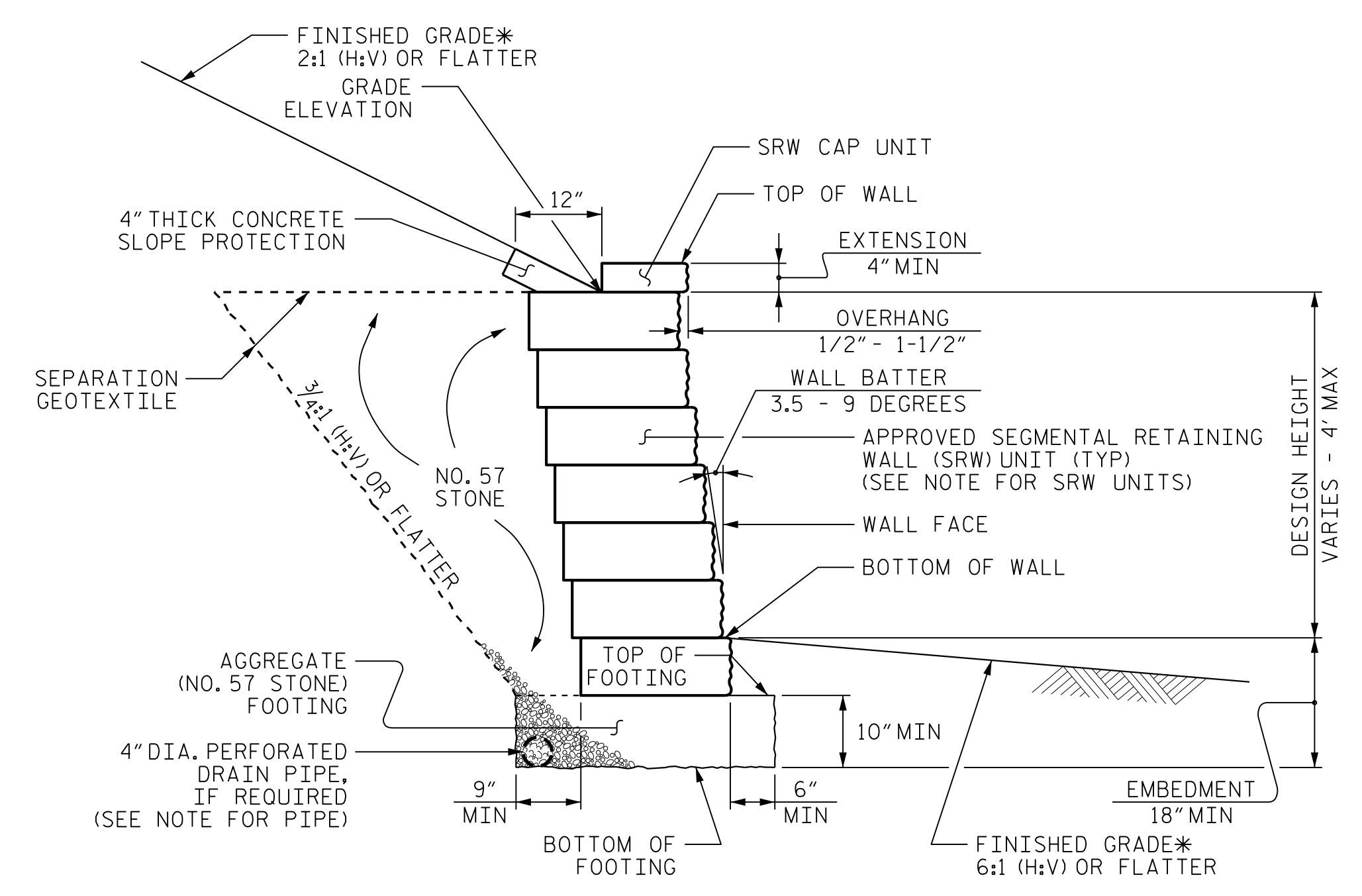


STANDARD SEGMENTAL GRAVITY WALL - PARTIAL ELEVATION



STANDARD SEGMENTAL GRAVITY WALL WITHOUT SLOPE

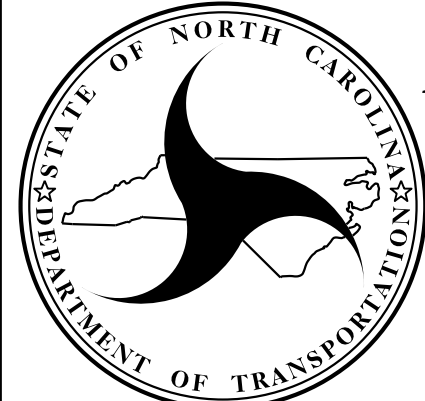
*SEE ROADWAY PLANS FOR FINISHED GRADE DETAILS.



STANDARD SEGMENTAL GRAVITY WALL WITH SLOPE

*SEE ROADWAY PLANS FOR FINISHED GRADE DETAILS.

PROJECT NO.: W-5510
 Forsyth COUNTY
 STATION: 14+47.00 to 15+18.00 -L-, 15+35.00 to 16+17.00 -L-, 16+01.00 to 16.47.00 -L-, 20+40.00 to 22+15.00 -L-
 SHEET 1 OF 1



**NORTH CAROLINA
DEPARTMENT OF TRANSPORTATION
DIVISION OF HIGHWAYS**

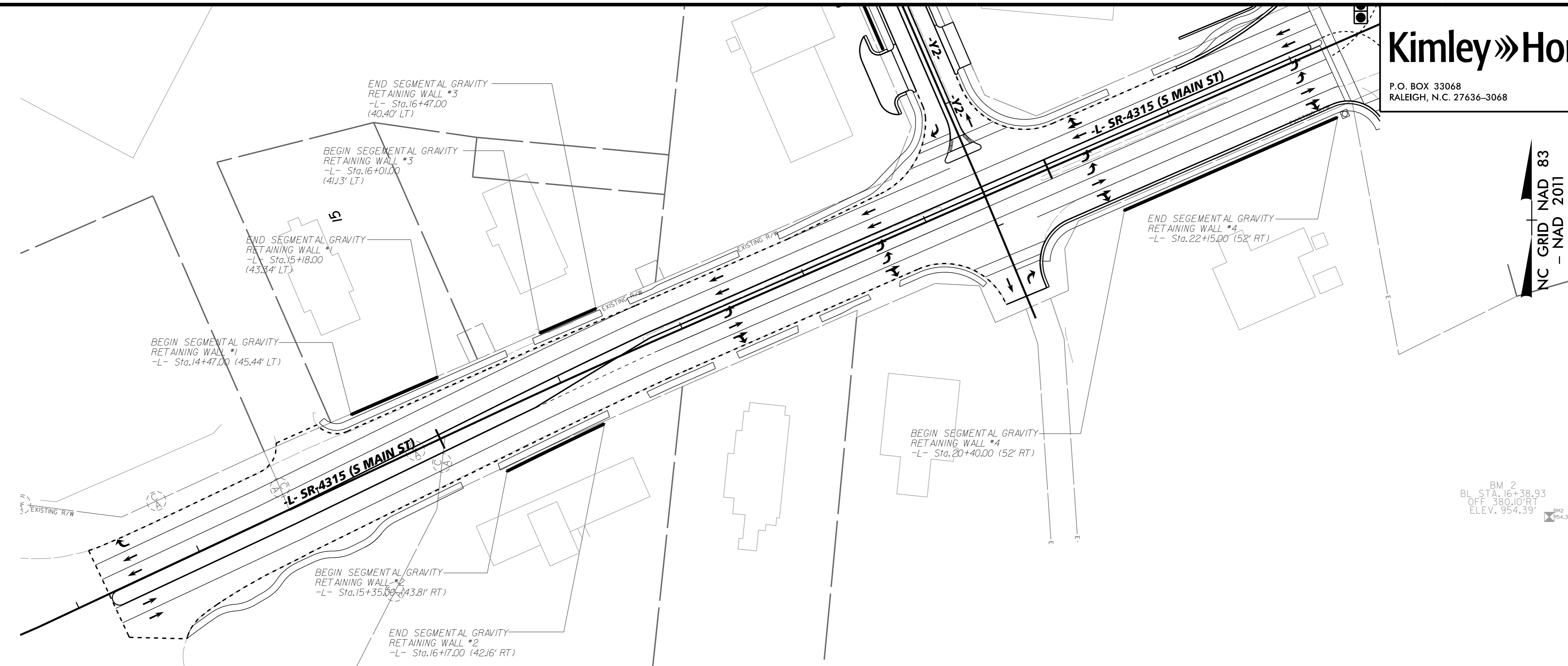
**GEOTECHNICAL
ENGINEERING UNIT**

STANDARD DETAIL NO. 453.02

**STANDARD
SEGMENTAL GRAVITY
RETAINING WALL**

DATE: 3-17-15

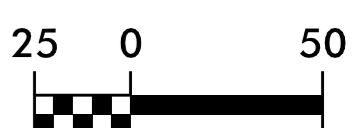
SHEET NO. W-2



BM 2
 BL STA. 16+38.93
 OFF. 380.10 RT
 ELEV. 954.39'

NC GRID NAD 83
 - NAD 2011

RETAINING WALL DETAILS



K:\RAL_Roadway\010136245 - Kernersville Roadway\Proj\W5510_RDY_PSH_W-3.dgn
 12/22/2015

SEGMENTAL GRAVITY RETAINING WALL 1		SEGMENTAL GRAVITY RETAINING WALL 2		SEGMENTAL GRAVITY RETAINING WALL 3		SEGMENTAL GRAVITY RETAINING WALL 4			
990	990	990	990	990	990	1010	1010		
980	980	980	980	980	980	1000	1000		
970	970	970	970	970	970	990	990		
960	960	960	960	960	960	980	980		
950	950	950	950	950	950	970	970		
940	940	940	940	940	940	960	960		
930	930	930	930	930	930	950	950		
920	920	920	920	920	920	940	940		
910	910	910	910	910	910	930	930		
900	900	900	900	900	900	920	920		
14	15	15	16	16	17	20	21	22	23

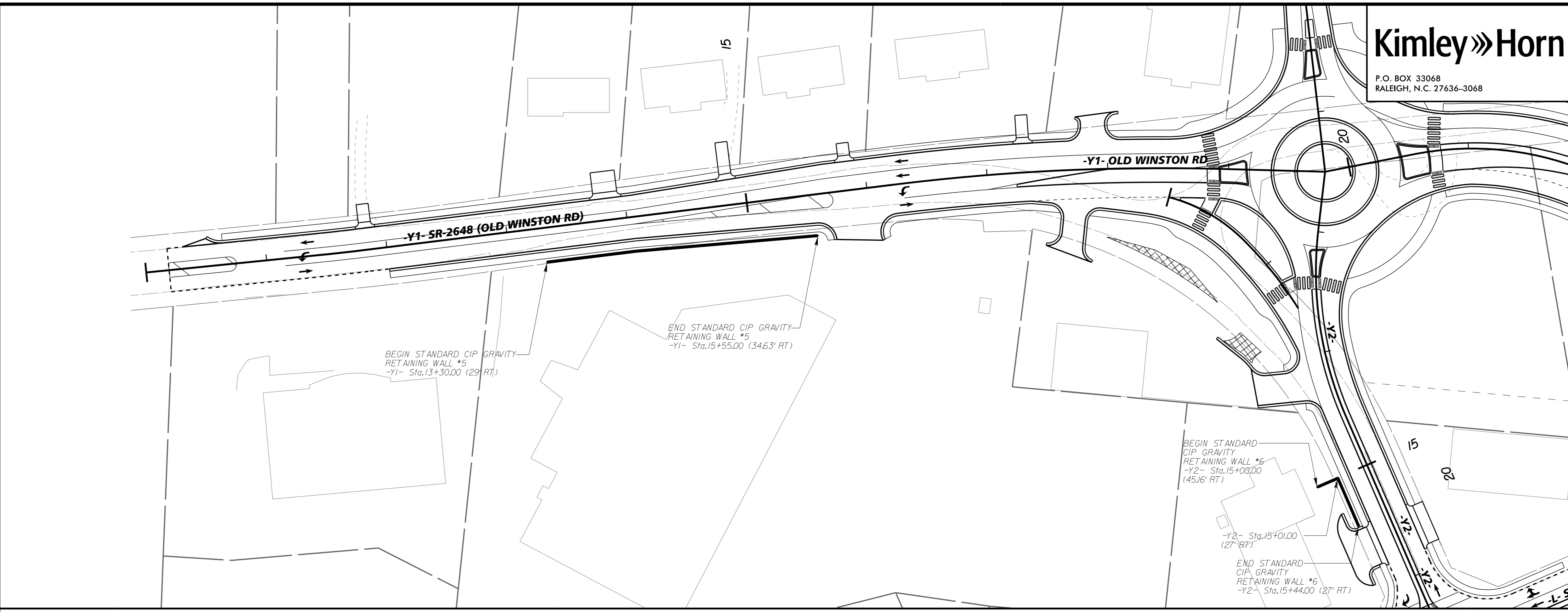
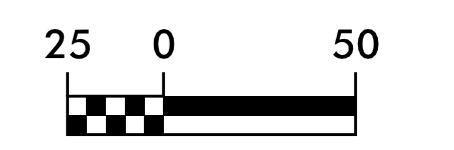
WALL 1
202 SF

WALL 2
179 SF

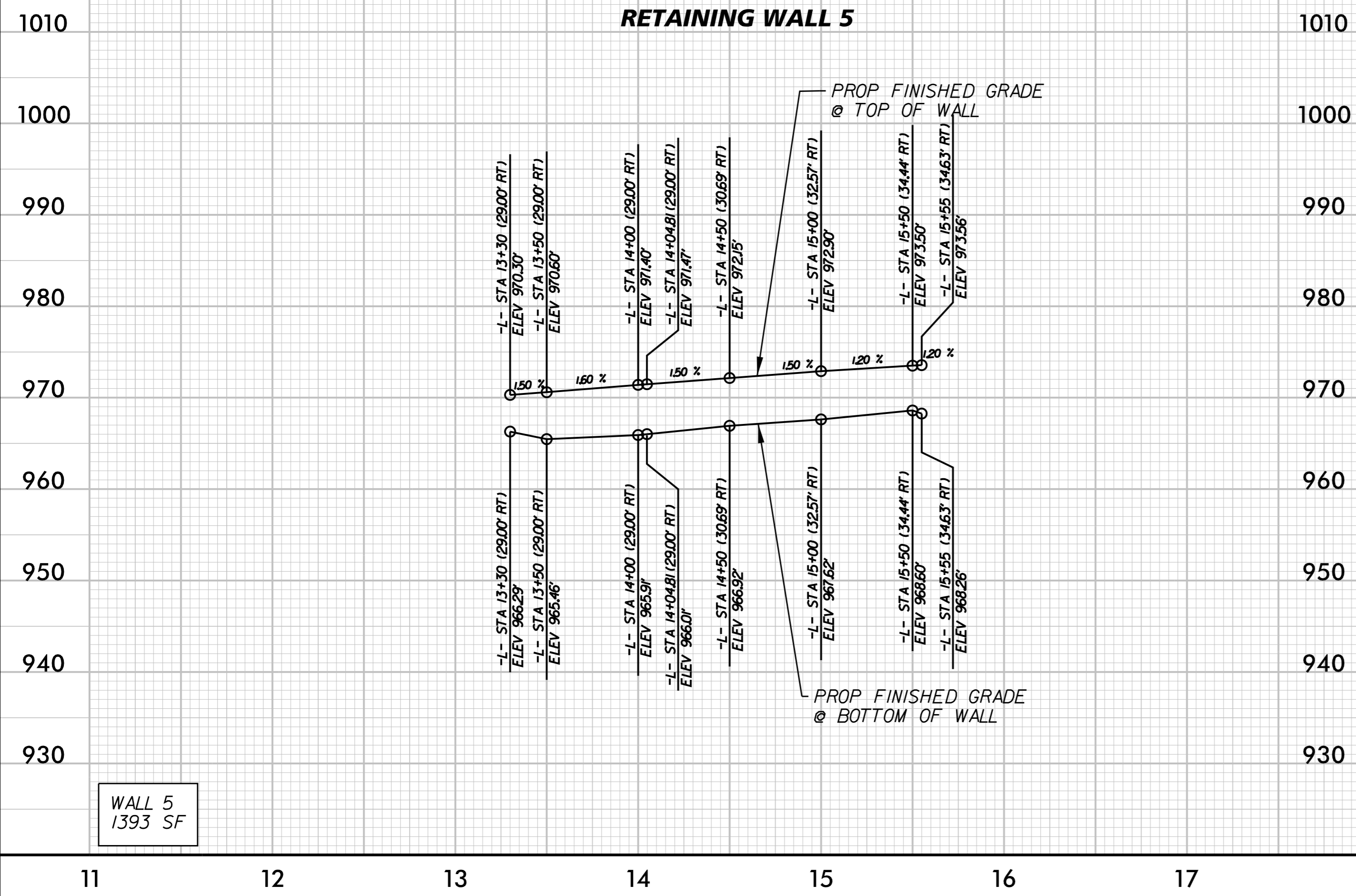
WALL 3
93 SF

WALL 4
409 SF

RETAINING WALL DETAILS

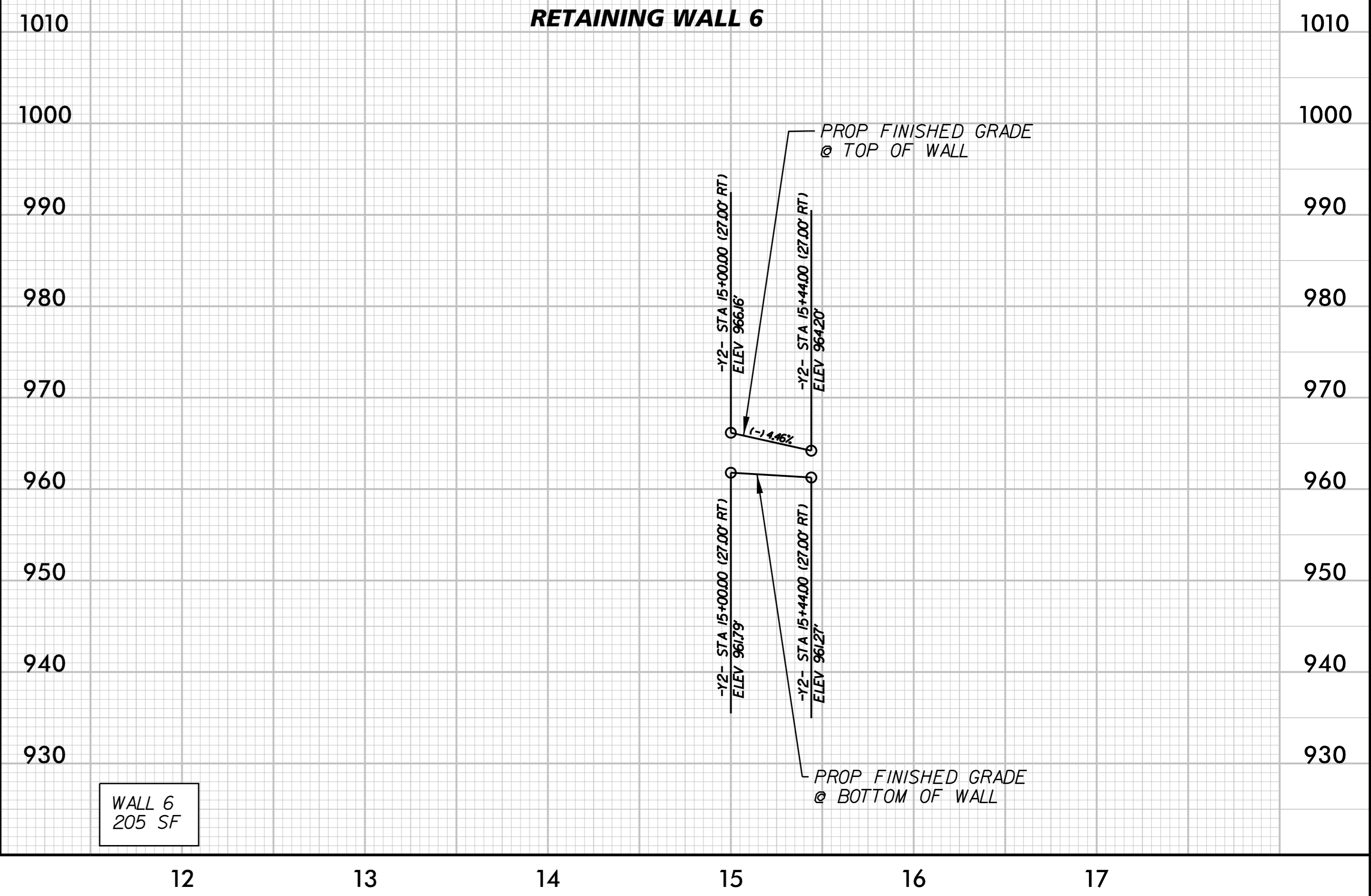


STANDARD CAST-IN-PLACE GRAVITY RETAINING WALL 5



WALL 5
1393 SF

STANDARD CAST-IN-PLACE GRAVITY RETAINING WALL 6



WALL 6
205 SF

K:\RAL_Roadway\01036245 - Kernersville\Roadway\Proj\W5510_RDY_PSH_W-4.dgn 1/2/22/2015