
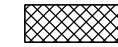
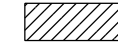


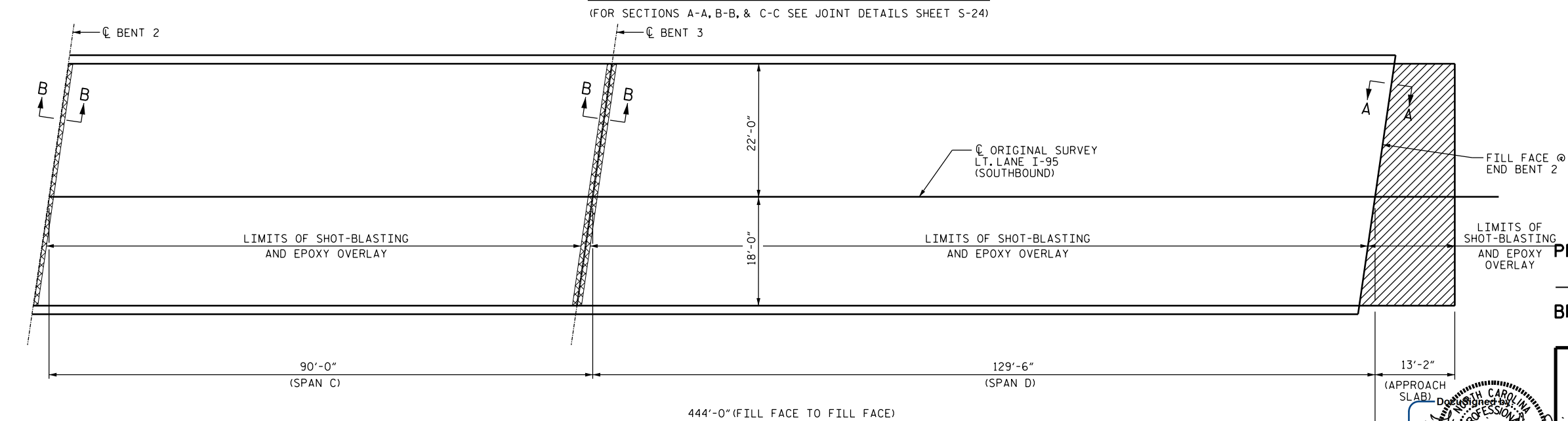
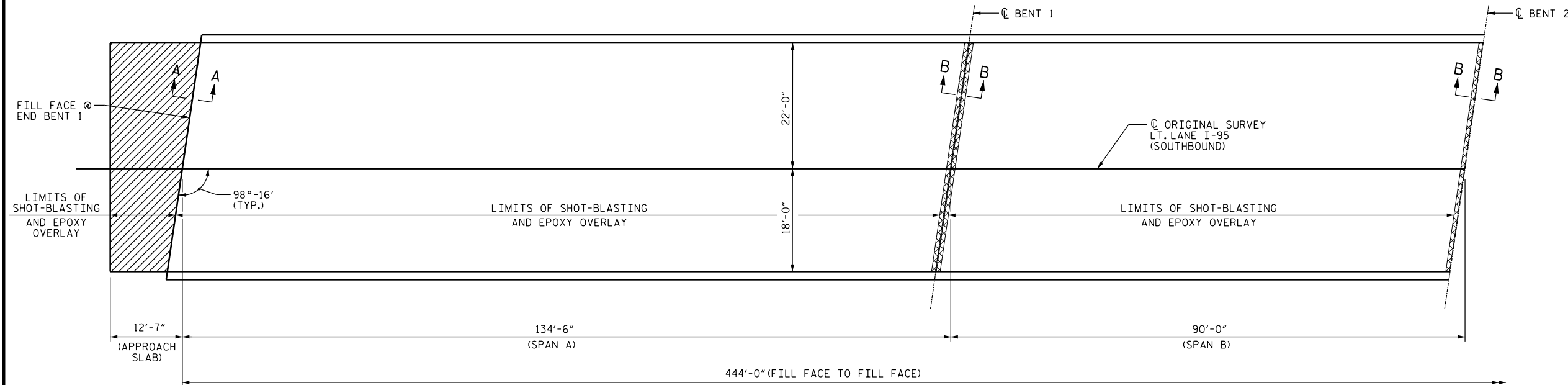
SUMMARY OF QUANTITIES

	ESTIMATE	ACTUAL
CONCRETE DECK REPAIR FOR EPOXY OVERLAY	*1 SQ. FT.	
EPOXY OVERLAY SYSTEM	18,630 SQ. FT.	
BRIDGE JOINT DEMOLITION	124 SQ. FT.	
INCIDENTAL MILLING	110 SQ. YDS.	

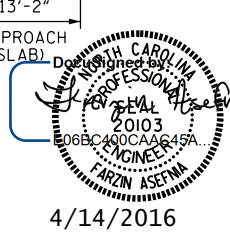
NOTE:

* CONCRETE DECK REPAIR FOR EPOXY OVERLAY IS NOT ANTICIPATED. TOKEN PAY ITEMS ARE INDICATED FOR PRICING PURPOSE IN CASE UNANTICIPATED REPAIR AREAS ARE ENCOUNTERED.

-  EPOXY OVERLAY
-  BRIDGE JOINT DEMOLITION
-  INCIDENTAL MILLING



PROJECT NO. I-5731
CUMBERLAND COUNTY
 BRIDGE NO. 103



4/14/2016

STATE OF NORTH CAROLINA
 DEPARTMENT OF TRANSPORTATION
 RALEIGH

SURFACE PREPARATION & EPOXY OVERLAY
 (SOUTHBOUND)

DRAWN BY : D.V. JOYNER DATE : 2/2016
 CHECKED BY : W.C. SMITH DATE : 2/2016

DOCUMENT NOT CONSIDERED FINAL UNLESS ALL SIGNATURES COMPLETED

REVISIONS						SHEET NO.
NO.	BY:	DATE:	NO.	BY:	DATE:	S-21
1			3			TOTAL SHEETS
2			4			37